

STA. 0400
CONNECT TO EXISTING
8" WATER LINE
INSTALL
1 - 8" x 8" TAPPING
SLEEVE AND VALVE

STA. 0425
INSTALL
1 - 8" 1 1/4" BEND

STA. 2485
CONNECT TO EXISTING
6" WATER LINE
INSTALL
1 - 8" x 6" TEE
1 - 6" x 6" TEE
1 - 6" SLEEVE
1 - 6" 90 BEND
1 - 6" GATE VALVE

STA. 5477.5
CONNECT TO EXISTING
8" WATER LINE
INSTALL
1 - 8" x 8" CROSS
1 - 8" x 6" TEE
1 - 8" x 6" REDUCER
1 - 6" 90 BEND
1 - 6" SLEEVE
1 - 8" PLUG
1 - 6" GATE VALVE

STA. 7476
CONNECT TO EXISTING 6"
WATER LINE
INSTALL
8" x 8" CROSS
1 - 8" PLUG
1 - 8" GATE VALVE

STA. 0400
CONNECT TO EXISTING
6" WATER LINE
REMOVE EXISTING 6" PLUG
INSTALL
1 - 6" x 6" TEE
1 - 6" PLUG
1 - 6" GATE VALVE
2 - 6" 45° BENDS

STA. 3476
INSTALL
1 - 6" x 6" TEE
1 - 8" 1/2" BEND
1 - 6" PLUG

STA. 6457
INSTALL
1 - 6" x 6" CROSS
2 - 6" PLUGS
1 - 6" GATE VALVE
1 - STD. FIRE HYD.

1 - 6" GATE VALVE
1 - 6" TEE
2 - 6" PLUGS

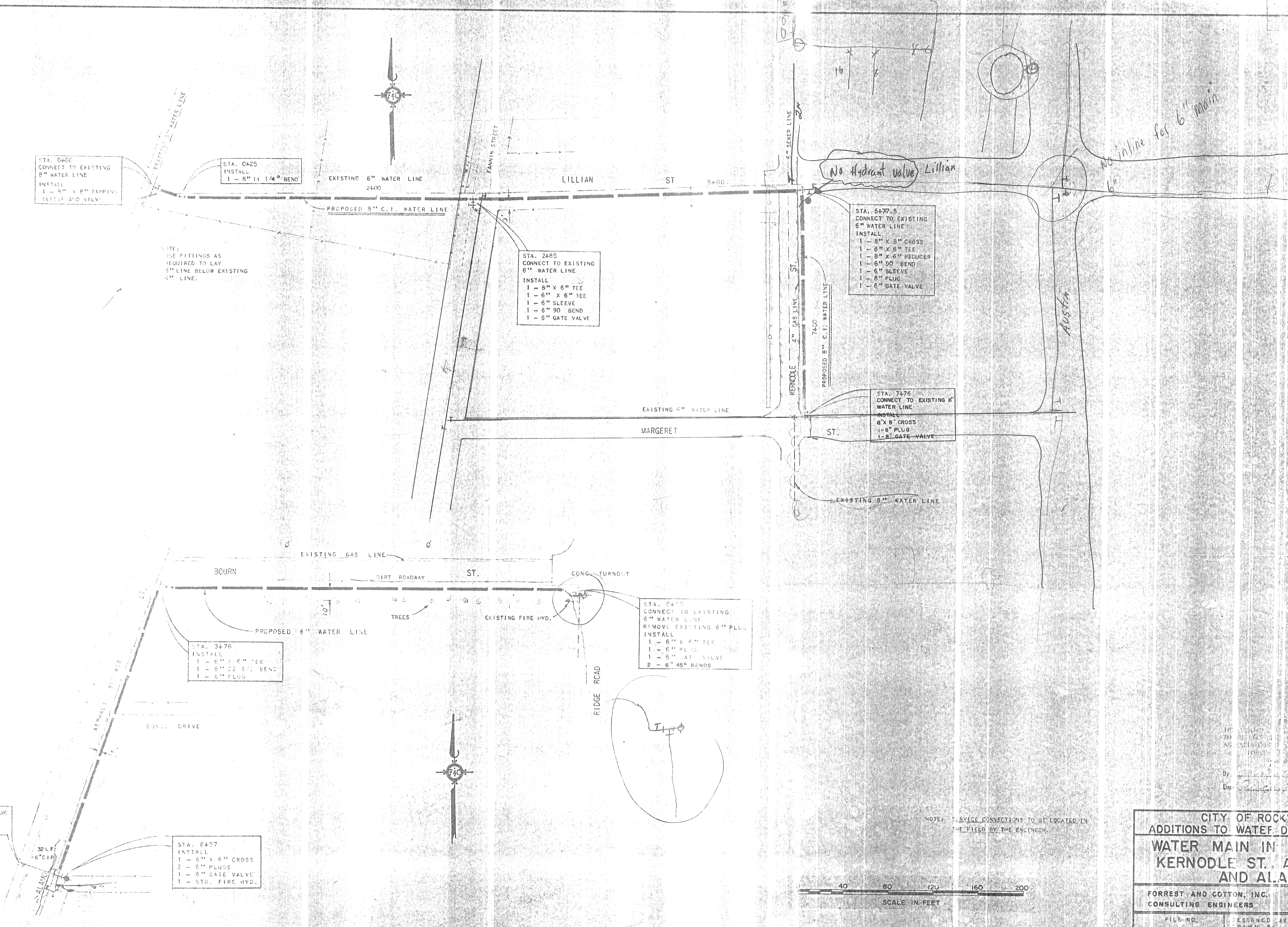
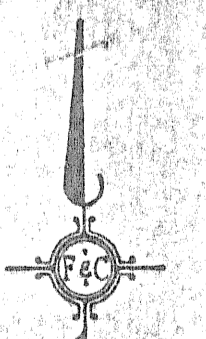
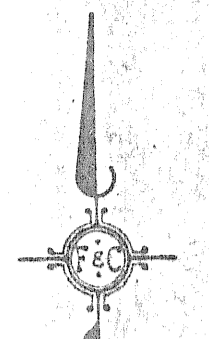
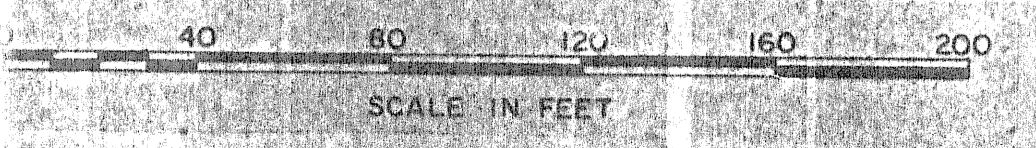
NOTE:
USE FITTINGS AS
REQUIRED TO LAY
8" LINE BELOW EXISTING
6" LINE.

NOTE: SERVICE CONNECTIONS TO BE LOCATED IN
THE FIELD BY THE ENGINEER.

CITY OF ROCKWALL, TEXAS
ADDITIONS TO WATER DISTRIBUTION SYSTEM
WATER MAIN IN LILLIAN ST AND
KERNODLE ST. AND IN BOURN
AND ALAMO ST.

FORREST AND COTTON, INC. DALLAS, TEXAS
CONSULTING ENGINEERS DECEMBER, 1957

FILE NO.	DESIGNED BY	SHEET
	DRAWN BY	6
	CHECKED BY	
	APPROVED BY	



No Hydrant Valve Lillian

No inline for 6" main

Austin

