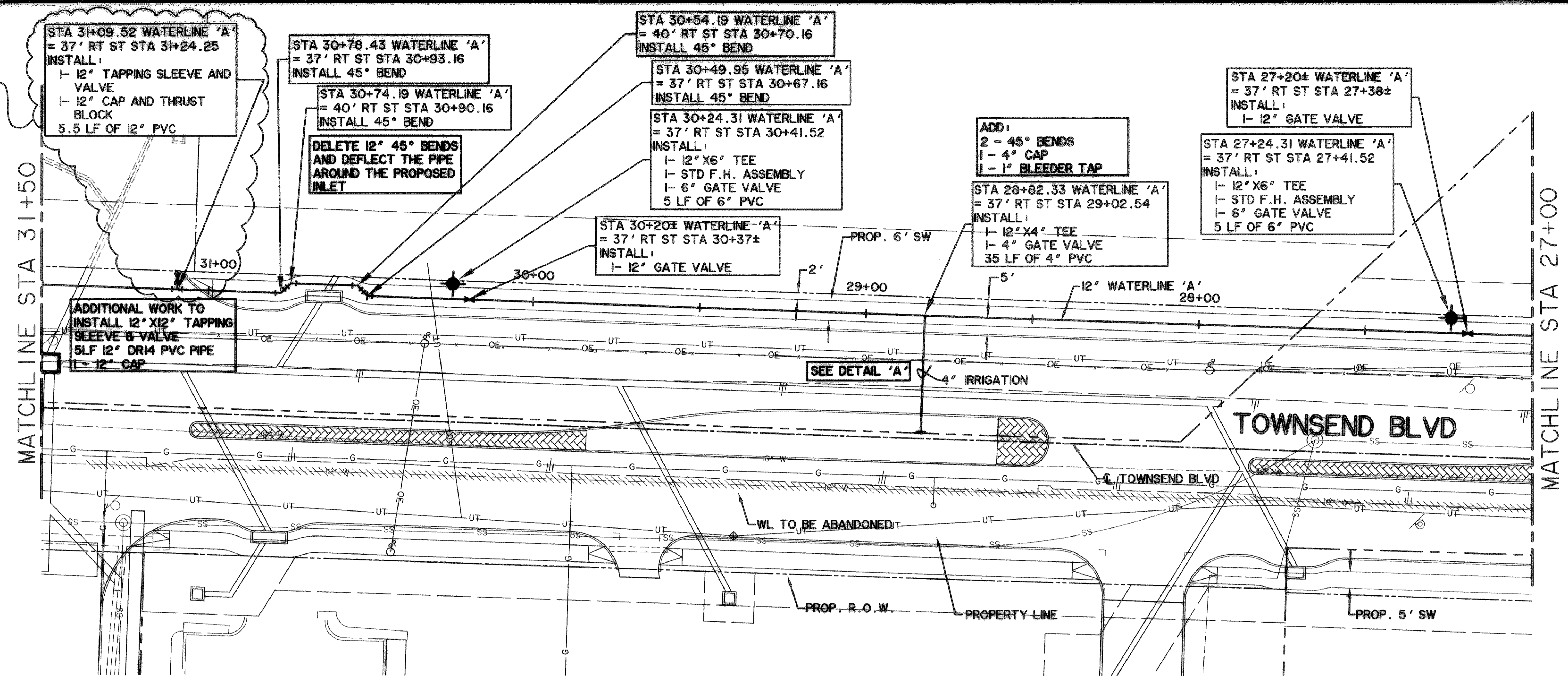


TIME 14.45 FILE: WATER-7-04124-R1.dwg

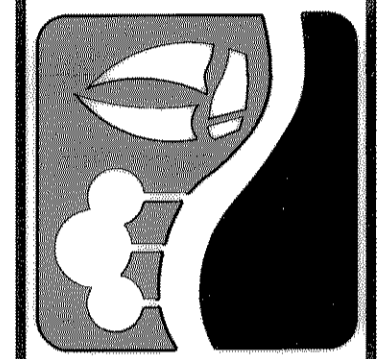


NOTES:
 1. CONTRACTOR SHALL COORDINATE RELOCATIONS WITH FRANCHISE UTILITIES AT LEAST THREE WEEKS PRIOR TO CONSTRUCTION. CONTRACTOR SHALL FIELD VERIFY UTILITY LOCATIONS AND ELEVATIONS AT CROSSINGS PRIOR TO CONSTRUCTION.
 2. CONTRACTOR SHALL ADJUST EXISTING WATER LINES TO PROVIDE A MINIMUM 2' CLEARANCE AT ALL STORM DRAIN CROSSINGS.

RECORD DRAWING

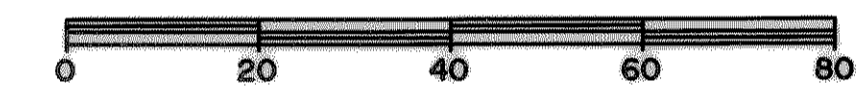
02/06/07

PREPARED BY:
WIA WIER & ASSOCIATES, INC.
 ENGINEERS SURVEYORS LAND PLANNERS
 4300 BELTWAY PLACE SUITE 130 ARLINGTON, TEXAS 76018 METRO (817)467-7700
 1300 U.S. HIGHWAY 207 N. SUITE 101 WANSFELD, TEXAS 76063 METRO (817)477-8700
 6949 ELM STREET FRESNO, TEXAS 75034 METRO (214)387-8000
 www.wierassociates.com



CITY OF ROCKWALL
TOWNSEND BLVD
 (I.H. 30 TO JUSTIN)
 & **YELLOW JACKET LN**
 (S.E. 205 TO TOWNSEND)

WATERLINE 'A'
PLAN PROFILE
STA. 27+00 TO 31+50



CAUTION !!!
 UNDERGROUND UTILITIES

EXISTING UTILITIES AND UNDERGROUND FACILITIES INDICATED ON THESE PLANS HAVE BEEN LOCATED FROM REFERENCE INFORMATION SUPPLIED BY VARIOUS OWNERS OF THE FACILITIES. THE ENGINEER DOES NOT ACCEPT THE RESPONSIBILITY FOR THE UTILITY LOCATIONS SHOWN. IT SHALL BE THE RESPONSIBILITY OF THE CONTRACTOR TO VERIFY BOTH HORIZONTALLY AND VERTICALLY THE LOCATION OF ALL EXISTING UTILITIES AND UNDERGROUND FACILITIES PRIOR TO CONSTRUCTION, TO TAKE NECESSARY PRECAUTIONS IN ORDER TO PROTECT ALL FACILITIES ENCOUNTERED, AND TO NOTIFY THE ENGINEER PROMPTLY OF ALL CONFLICTS OF THE WORK WITH EXISTING FACILITIES. THE CONTRACTOR SHALL PRESERVE AND PROTECT ALL EXISTING UTILITIES FROM DAMAGE DURING CONSTRUCTION. ANY DAMAGE BY THE CONTRACTOR TO EXISTING UTILITIES SHALL BE REPAIRED BY THE CONTRACTOR AT HIS EXPENSE.

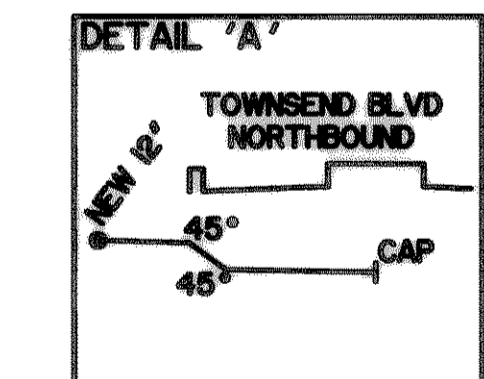
BENCHMARKS:
 "□" CUT IN THE EAST END OF THE HEADWALL LOCATED ON THE NORTHWEST CORNER OF THE INTERSECTION OF BOYDSTUN STREET AND CLARK STREET. ELEVATION 534.21
 "□" CUT IN THE SOUTHWEST CORNER OF THE HEADWALL LOCATED ON THE WEST SIDE OF INDUSTRIAL BLVD, APPROXIMATELY 250± FEET NORTH OF THE INTERSECTION OF INDUSTRIAL AND THE I-30 ACCESS ROAD. ELEVATION 544.77

LEGEND

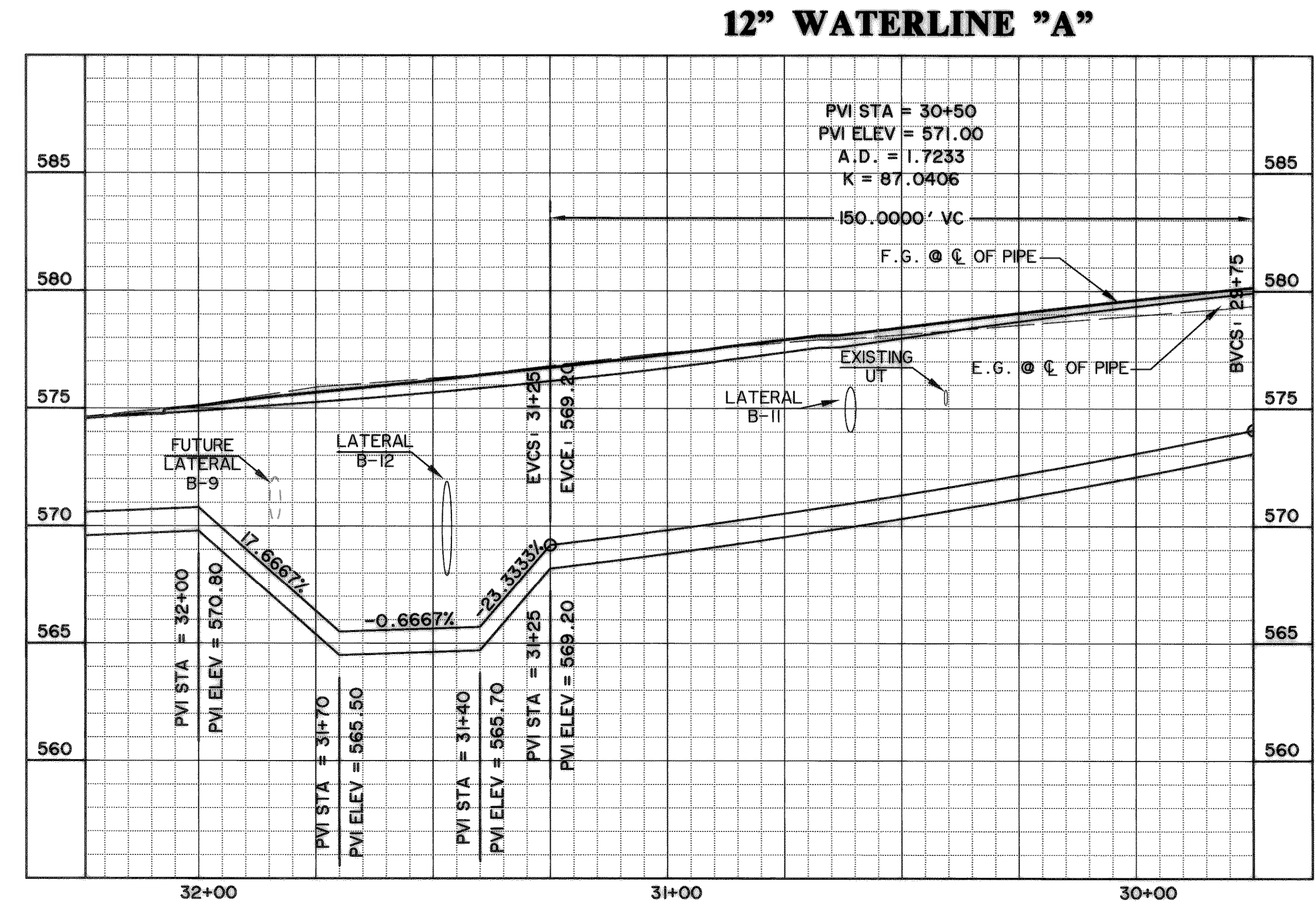
| | |
|--|-----------------------|
| | PROPOSED WATER LINE |
| | PROPOSED SS LINE |
| | PROPOSED GATE VALVE |
| | PROPOSED FIRE HYDRANT |
| | EXISTING WATER LINE |
| | EXISTING SS LINE |
| | EXISTING GATE VALVE |
| | EXISTING MANHOLE |
| | EXISTING FIRE HYDRANT |

FITTINGS INSTALLED THIS PAGE
 1 - 12" X 12" TAPPING SLEEVE
 1 - 12" GATE VALVE
 1 - 12" CAP
 5LF 12" DR14 PVC PIPE
 1 - ADJUSTABLE VALVE BOX
 1 - VALVE EXTENSION
 2 - 12" MEGA LUGS

TOTAL FITTING TONAGE THIS PAGE: 0.13 TONS



REVISIONS:
 △ ADDED TAPPING SLEEVE AND GATE VALVE FOR FUTURE JUSTIN RD
 08/28/06



STATE OF TEXAS
 RONALD KENNEDY
 81821
 REGISTERED PROFESSIONAL ENGINEER
 Copyright © Wier & Associates, Inc.
 LAST SHEET EDIT
 DATE 07-26-2007
 WA# 04124
SHEET NO. U107