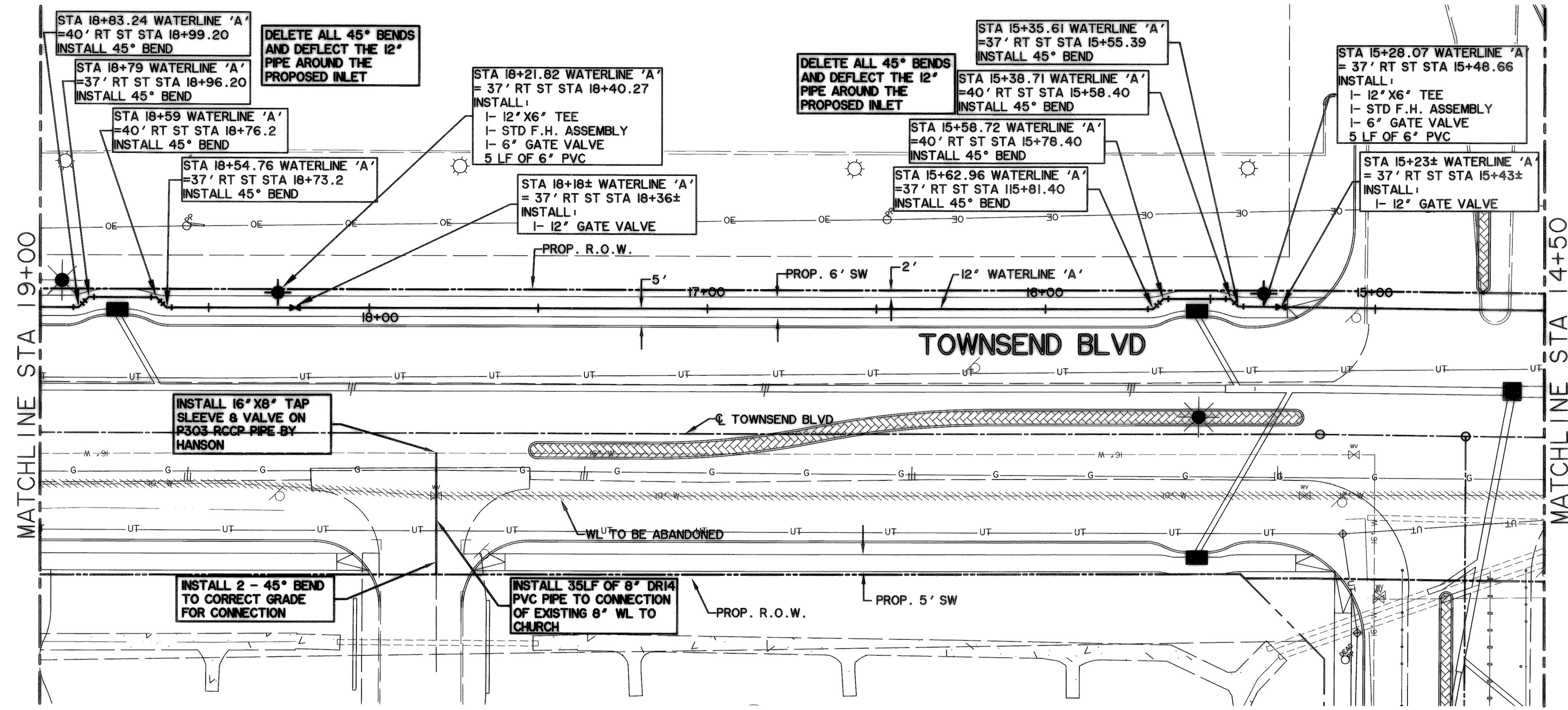


FILE: WATER-4-04124.dwg
TIME: 14.24



12" WATERLINE "A"

FITTINGS INSTALLED FOR EXTRA WORK
 2 - 8" 45° BEND
 1 - 16" X 8" TAPPING SLEEVE
 1 - 8" SLEEVE
 5 - ADJUSTABLE VALVE BOX

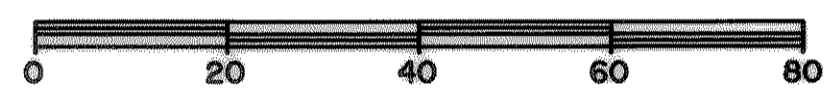
TOTAL FITTING TONAGE FOR EXTRA WORK: 0.26 TONS

FITTINGS INSTALLED THIS PAGE
 2 - 12" X 8" TEE
 8 - 12" MEGA LUGS
 4 - 6" MEGA LUGS
 4 - ADJUSTABLE VALVE BOX
 4 - VALVE EXTENSION

TOTAL FITTING TONAGE THIS PAGE: 0.74 TONS

NOTES:
 1. CONTRACTOR SHALL COORDINATE RELOCATIONS WITH FRANCHISE UTILITIES AT LEAST THREE WEEKS PRIOR TO CONSTRUCTION. CONTRACTOR SHALL FIELD VERIFY UTILITY LOCATIONS AND ELEVATIONS AT CROSSINGS PRIOR TO CONSTRUCTION.
 2. CONTRACTOR SHALL ADJUST EXISTING WATER LINES TO PROVIDE A MINIMUM 2' CLEARANCE AT ALL STORM DRAIN CROSSINGS.

RECORD DRAWING
02/06/07



CAUTION !!!
 UNDERGROUND UTILITIES

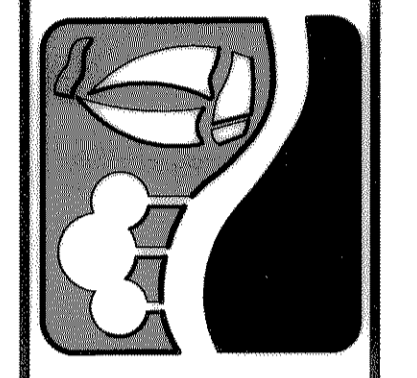
EXISTING UTILITIES AND UNDERGROUND FACILITIES INDICATED ON THESE PLANS HAVE BEEN LOCATED FROM REFERENCE INFORMATION SUPPLIED BY VARIOUS OWNERS OF THE FACILITIES. THE ENGINEER DOES NOT ACCEPT THE RESPONSIBILITY FOR THE UTILITY LOCATIONS SHOWN, IT SHALL BE THE RESPONSIBILITY OF THE CONTRACTOR TO VERIFY BOTH HORIZONTALLY AND VERTICALLY THE LOCATION OF ALL EXISTING UTILITIES AND UNDERGROUND FACILITIES PRIOR TO CONSTRUCTION, TO TAKE NECESSARY PRECAUTIONS IN ORDER TO PROTECT ALL FACILITIES ENCOUNTERED, AND TO NOTIFY THE ENGINEER PROMPTLY OF ALL CONFLICTS OF THE WORK WITH EXISTING FACILITIES. THE CONTRACTOR SHALL PRESERVE AND PROTECT ALL EXISTING UTILITIES FROM DAMAGE DURING CONSTRUCTION. ANY DAMAGE BY THE CONTRACTOR TO EXISTING UTILITIES SHALL BE REPAIRED BY THE CONTRACTOR AT HIS EXPENSE.

BENCHMARKS:
 "C" CUT IN THE EAST END OF THE HEADWALL LOCATED ON THE NORTHWEST CORNER OF THE INTERSECTION OF BOYDSTUN STREET AND CLARK STREET. ELEVATION 534.21
 "D" CUT IN THE SOUTHWEST CORNER OF THE HEADWALL LOCATED ON THE WEST SIDE OF INDUSTRIAL BLVD, APPROXIMATELY 250± FEET NORTH OF THE INTERSECTION OF INDUSTRIAL AND THE I-30 ACCESS ROAD. ELEVATION 544.77

LEGEND

	PROPOSED WATER LINE
	PROPOSED SS LINE
	PROPOSED GATE VALVE
	PROPOSED FIRE HYDRANT
	EXISTING WATER LINE
	EXISTING SS LINE
	EXISTING GATE VALVE
	EXISTING MANHOLE
	EXISTING FIRE HYDRANT

PREPARED BY:
WIA WIER & ASSOCIATES, INC.
 ENGINEERS SURVEYORS LAND PLANNERS
 4300 BELWAY PLACE SUITE 130 ARLINGTON, TEXAS 76018 METRO (817)467-7700
 1300 U.S. HIGHWAY 287 N. SUITE 101 WANSFELD, TEXAS 76783 METRO (817)477-6700
 6849 ELM STREET FRODO, TEXAS 75034 METRO (214)387-8800
 www.wierassociates.com



CITY OF ROCKWALL
TOWNSEND BLVD
(I.H. 30 TO JUSTIN)
& YELLOW JACKET LN
(S.H. 205 TO TOWNSEND)

WATERLINE 'A'
PLAN PROFILE
STA. 14+50 TO 19+00

STATE OF TEXAS
 RONALD RAMIREZ
 81821
 REGISTERED PROFESSIONAL ENGINEER

Copyright ©
 WIER & ASSOCIATES, INC.
 LAST SHEET EDIT
 DATE 07-18-2007
 WA# 04124

SHEET NO.
U104