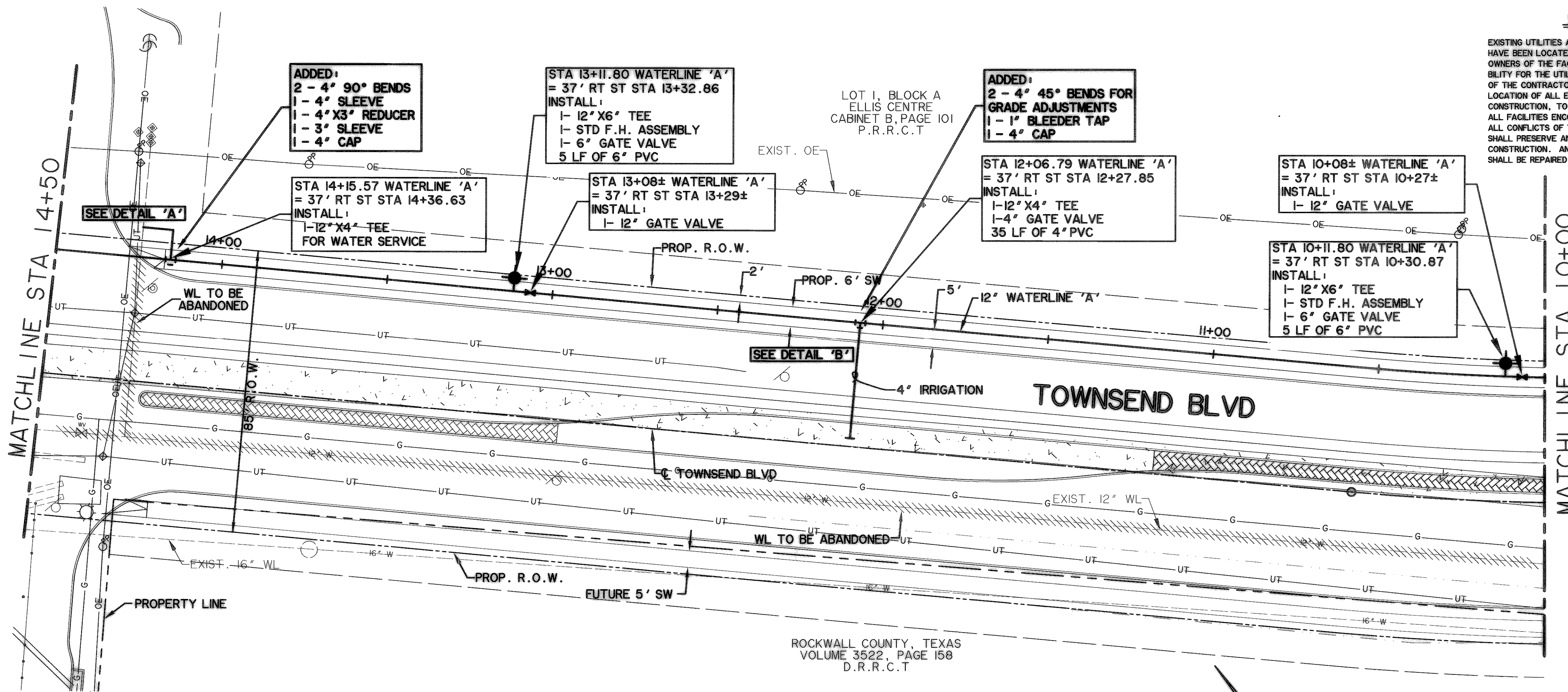


**CAUTION !!!**  
UNDERGROUND UTILITIES

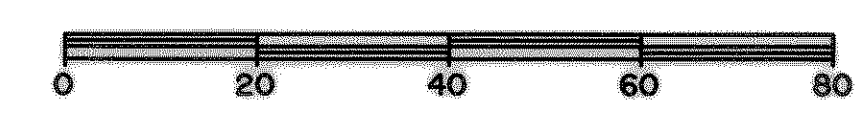
EXISTING UTILITIES AND UNDERGROUND FACILITIES INDICATED ON THESE PLANS HAVE BEEN LOCATED FROM REFERENCE INFORMATION SUPPLIED BY VARIOUS OWNERS OF THE FACILITIES. THE ENGINEER DOES NOT ACCEPT THE RESPONSIBILITY FOR THE UTILITY LOCATIONS SHOWN. IT SHALL BE THE RESPONSIBILITY OF THE CONTRACTOR TO VERIFY BOTH HORIZONTALLY AND VERTICALLY THE LOCATION OF ALL EXISTING UTILITIES AND UNDERGROUND FACILITIES PRIOR TO CONSTRUCTION. TO TAKE NECESSARY PRECAUTIONS IN ORDER TO PROTECT ALL FACILITIES ENCOUNTERED, AND TO NOTIFY THE ENGINEER PROMPTLY OF ALL CONFLICTS OF THE WORK WITH EXISTING FACILITIES. THE CONTRACTOR SHALL PRESERVE AND PROTECT ALL EXISTING UTILITIES FROM DAMAGE DURING CONSTRUCTION. ANY DAMAGE BY THE CONTRACTOR TO EXISTING UTILITIES SHALL BE REPAIRED BY THE CONTRACTOR AT HIS EXPENSE.



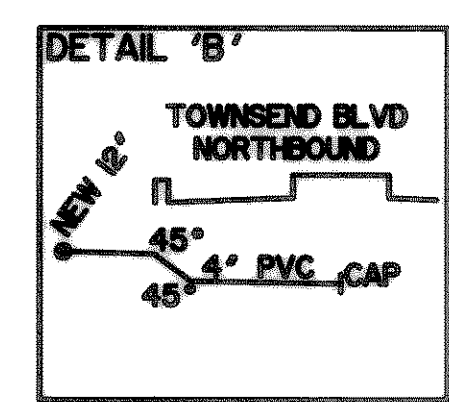
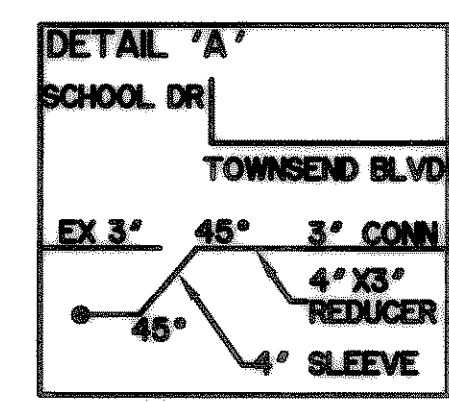
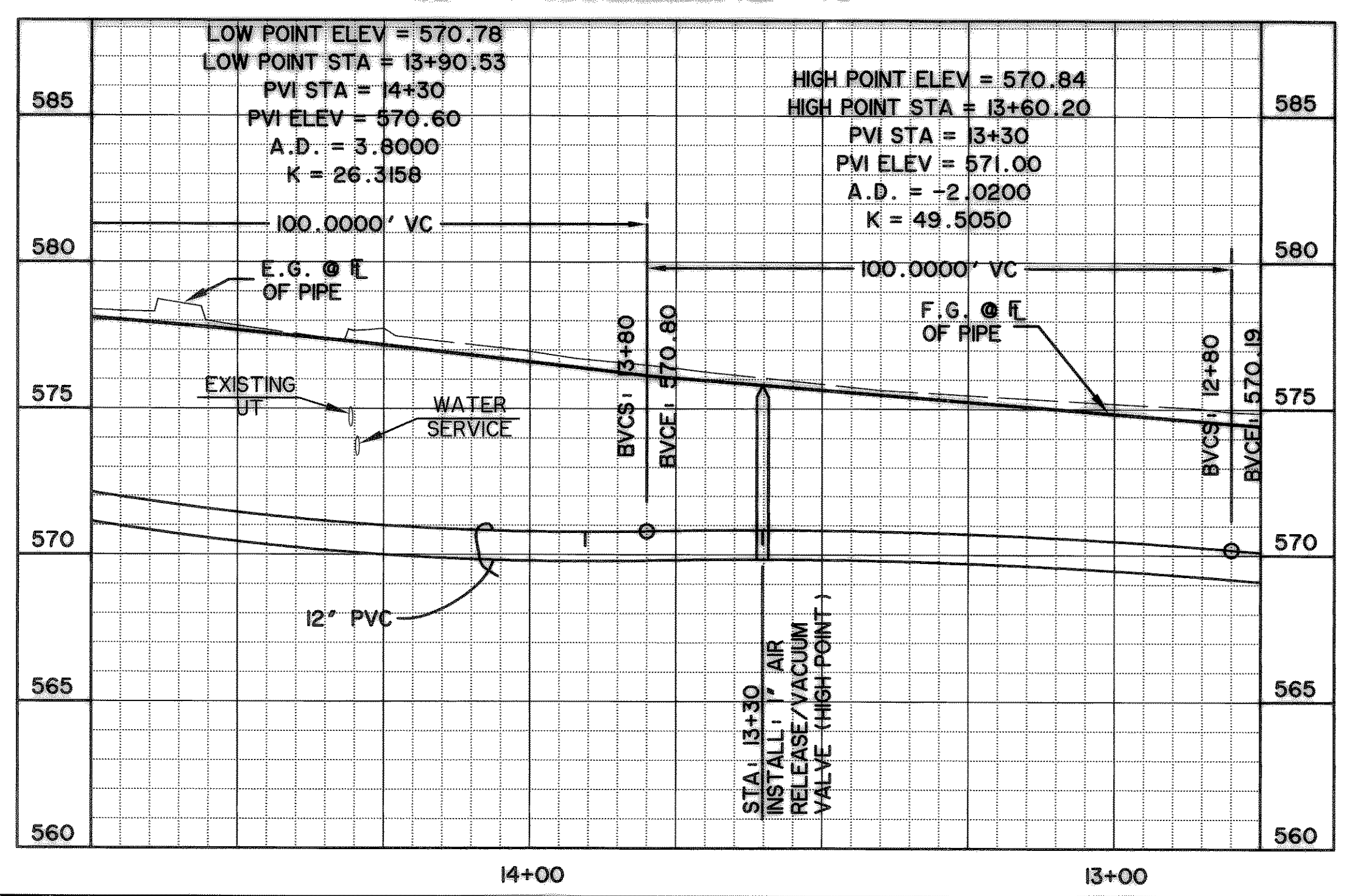
ROCKWALL COUNTY, TEXAS  
VOLUME 3522, PAGE 158  
D.R.R.C.T

- FITTINGS INSTALLED THIS PAGE**
- 1 - 4' 4" X 3" REDUCER
  - 1 - 4' 45° BEND
  - 2 - 4' 90° BEND
  - 2 - 12" X 6" TEE
  - 2 - 12" X 4" TEE
  - 2 - 4' SLEEVE
  - 1 - 3" CAP
  - 12 - 12" MEGA LUGS
  - 13 - 4" MEGA LUGS
  - 2 - 3" MEGA LUGS
  - 6 - ADJUSTABLE VALVE BOX
  - 6 - VALVE EXTENSION

**TOTAL FITTING TONAGE THIS PAGE: 1.39 TONS**



**12" WATERLINE "A"**



**BENCHMARKS:**

"X" CUT IN THE EAST END OF THE HEADWALL LOCATED ON THE NORTHWEST CORNER OF THE INTERSECTION OF BOYDSTUN STREET AND CLARK STREET. ELEVATION 534.21

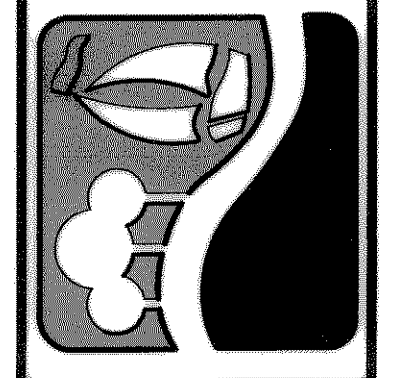
"X" CUT IN THE SOUTHWEST CORNER OF THE HEADWALL LOCATED ON THE WEST SIDE OF INDUSTRIAL BLVD, APPROXIMATELY 250± FEET NORTH OF THE INTERSECTION OF INDUSTRIAL AND THE I-30 ACCESS ROAD. ELEVATION 544.77

- LEGEND**
- W — PROPOSED WATER LINE
  - SS — PROPOSED SS LINE
  - G — PROPOSED GATE VALVE
  - FH — PROPOSED FIRE HYDRANT
  - EXISTING WATER LINE
  - EXISTING SS LINE
  - EXISTING GATE VALVE
  - EXISTING MANHOLE
  - EXISTING FIRE HYDRANT

**RECORD DRAWING**  
02/06/07

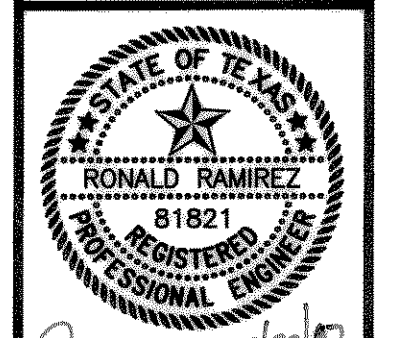
- NOTES:**
1. CONTRACTOR SHALL COORDINATE RELOCATIONS WITH FRANCHISE UTILITIES AT LEAST THREE WEEKS PRIOR TO CONSTRUCTION. CONTRACTOR SHALL FIELD VERIFY UTILITY LOCATIONS AND ELEVATIONS AT CROSSINGS PRIOR TO CONSTRUCTION.
  2. CONTRACTOR SHALL ADJUST EXISTING WATER LINES TO PROVIDE A MINIMUM 2' CLEARANCE AT ALL STORM DRAIN CROSSINGS.

PREPARED BY:  
**WIER & ASSOCIATES, INC.**  
ENGINEERS SURVEYORS LAND PLANNERS  
4300 BELLEVUE PLACE SUITE 130 ARLINGTON, TEXAS 76018 METRO (817)467-7700  
1300 U.S. HIGHWAY 207 N. SUITE 101 WANSFORD, TEXAS 76783 METRO (817)477-8700  
6849 ELM STREET FRISCO, TEXAS 75034 METRO (214)387-8000  
www.wierassociates.com



**CITY OF ROCKWALL**  
**TOWNSEND BLVD**  
**(I.H. 30 TO JUSTIN)**  
**& YELLOW JACKET LN**  
**(S.E. 205 TO TOWNSEND)**

**WATERLINE 'A'**  
**PLAN PROFILE**  
**STA. 10+00 TO 14+50**



COPYRIGHT ©  
WIER & ASSOCIATES, INC.  
LAST SHEET EDIT  
DATE 02-06-2007  
WA# 04124  
**SHEET NO.**  
**U103**