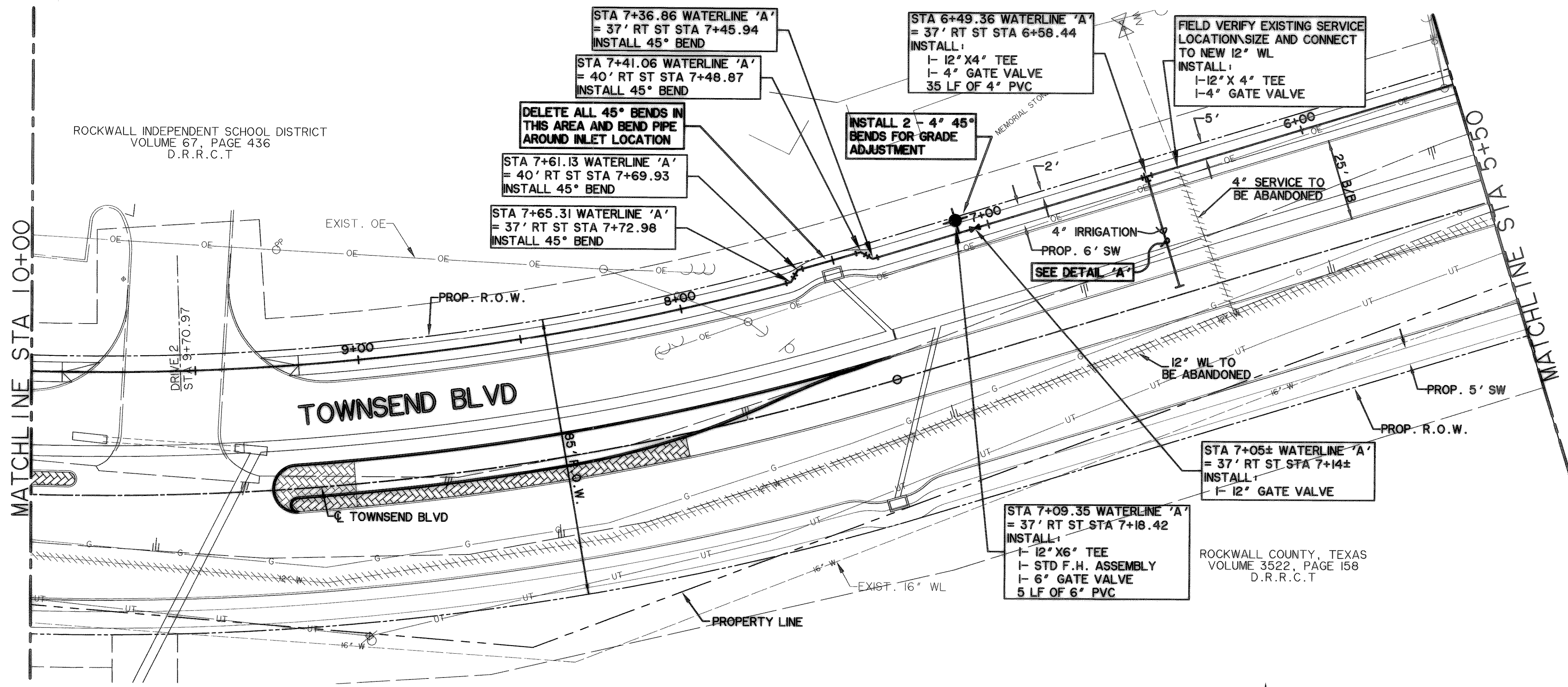


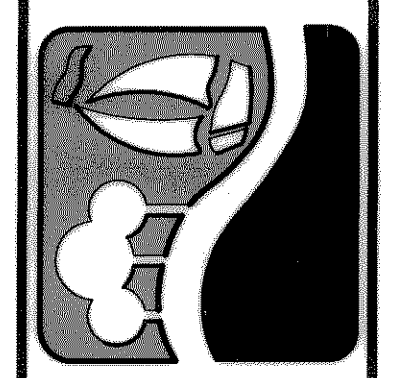
ROCKWALL INDEPENDENT SCHOOL DISTRICT
VOLUME 67, PAGE 436
D.R.R.C.T



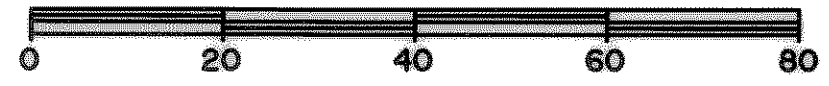
NOTES:
1. CONTRACTOR SHALL COORDINATE RELOCATIONS WITH FRANCHISE UTILITIES AT LEAST THREE WEEKS PRIOR TO CONSTRUCTION. CONTRACTOR SHALL FIELD VERIFY UTILITY LOCATIONS AND ELEVATIONS AT CROSSINGS PRIOR TO CONSTRUCTION.
2. CONTRACTOR SHALL ADJUST EXISTING WATER LINES TO PROVIDE A MINIMUM 2' CLEARANCE AT ALL STORM DRAIN CROSSINGS.

RECORD DRAWING
02/01/07

PREPARED BY:
WIER & ASSOCIATES, INC.
ENGINEERS SURVEYORS LAND PLANNERS
4300 BELWAY PLACE SUITE 130 ARLINGTON, TEXAS 76018 METRO (817)467-7700
1300 U.S. HIGHWAY 287 N. SUITE 101 MANSFIELD, TEXAS 76063 METRO (817)477-6700
6849 ELM STREET PERCO, TEXAS 75074 METRO (214)387-8000
www.wierassociates.com



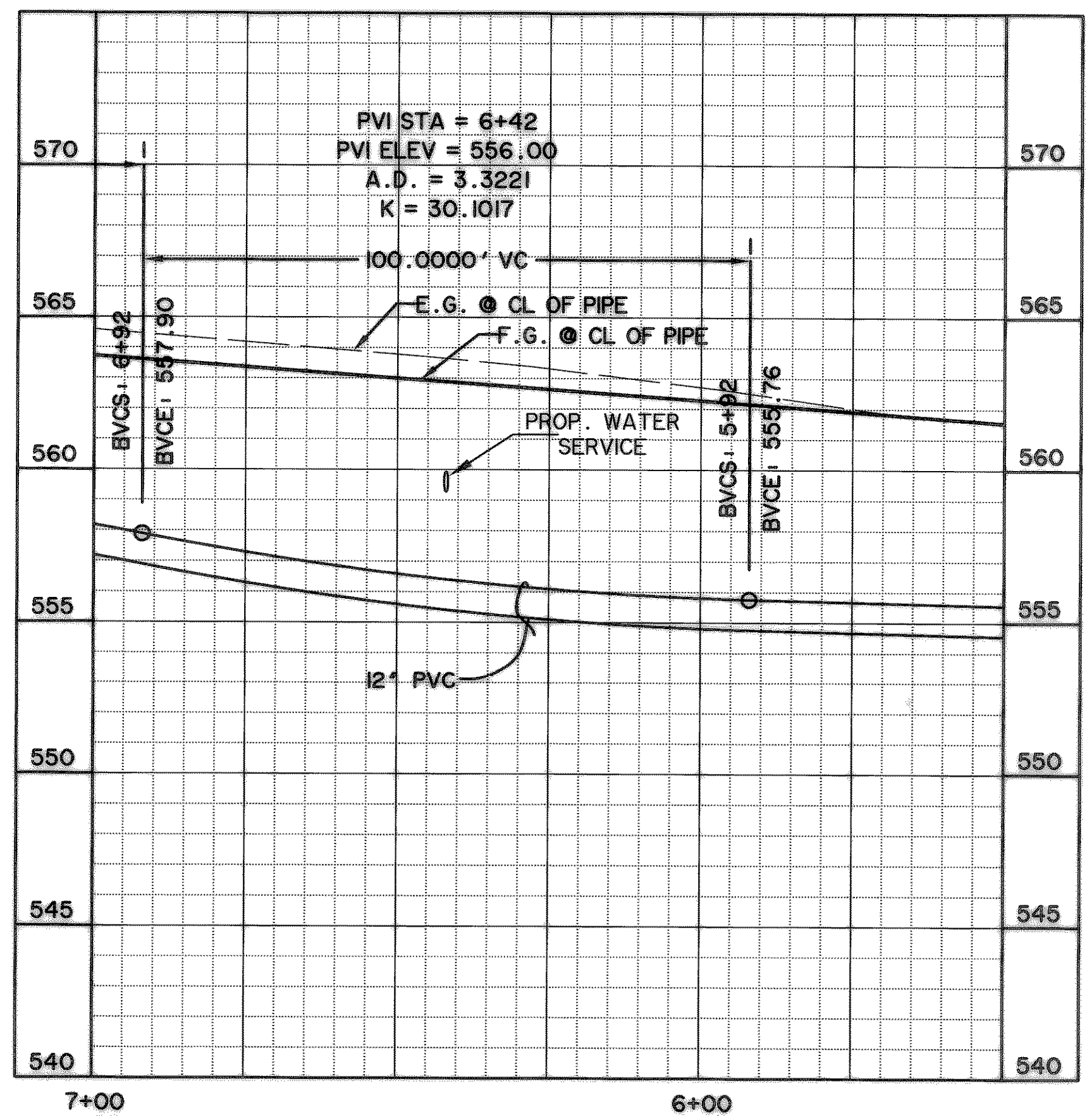
CITY OF ROCKWALL
TOWNSEND BLVD
(L.H. 30 TO JUSTIN)
& YELLOW JACKET LN
(S.H. 205 TO TOWNSEND)



CAUTION !!!
UNDERGROUND UTILITIES

EXISTING UTILITIES AND UNDERGROUND FACILITIES INDICATED ON THESE PLANS HAVE BEEN LOCATED FROM REFERENCE INFORMATION SUPPLIED BY VARIOUS OWNERS OF THE FACILITIES. THE ENGINEER DOES NOT ACCEPT THE RESPONSIBILITY FOR THE UTILITY LOCATIONS SHOWN, IT SHALL BE THE RESPONSIBILITY OF THE CONTRACTOR TO VERIFY BOTH HORIZONTALLY AND VERTICALLY THE LOCATION OF ALL EXISTING UTILITIES AND UNDERGROUND FACILITIES PRIOR TO CONSTRUCTION, TO TAKE NECESSARY PRECAUTIONS IN ORDER TO PROTECT ALL FACILITIES ENCOUNTERED, AND TO NOTIFY THE ENGINEER PROMPTLY OF ALL CONFLICTS OF THE WORK WITH EXISTING FACILITIES. THE CONTRACTOR SHALL PRESERVE AND PROTECT ALL EXISTING UTILITIES FROM DAMAGE DURING CONSTRUCTION. ANY DAMAGE BY THE CONTRACTOR TO EXISTING UTILITIES SHALL BE REPAIRED BY THE CONTRACTOR AT HIS EXPENSE.

12" WATERLINE "A"



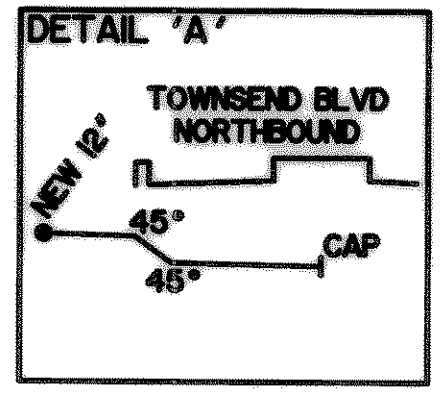
BENCHMARKS:
"□" CUT IN THE END OF THE SOUTH CURB OF WHITMORE DRIVE LOCATED APPROX 30' EAST OF INTERSECTION OF WHITMORE DRIVE AND TOWNSEND DRIVE.
ELEVATION 565.24
"□" CUT IN THE NORTHWEST CORNER OF CURB INLET IN THE WEST CURB LINE OF INDUSTRIAL BLVD APPROX 85' NORTH FROM THE INTERSECTION OF PROPOSED WHITMORE DRIVE AND INDUSTRIAL BLVD.
ELEVATION 561.28

LEGEND

	PROPOSED WATER LINE
	PROPOSED SS LINE
	PROPOSED GATE VALVE
	PROPOSED FIRE HYDRANT
	EXISTING WATER LINE
	EXISTING SS LINE
	EXISTING GATE VALVE
	EXISTING MANHOLE
	EXISTING FIRE HYDRANT

FITTINGS INSTALLED THIS PAGE
2 - 12" X 6" TEE
1 - 12" X 4" TEE
4 - 4" 45° BEND
1 - 4" CAP
6 - 12" MEGA LUGS
3 - 8" MEGA LUGS
13 - 4" MEGA LUGS
3 - ADJUSTABLE VALVE BOX
3 - VALVE EXTENSION

TOTAL FITTING TONAGE THIS PAGE: 0.77 TONS



RECORD DRAWING
02/06/07

WATERLINE 'A'
PLAN PROFILE
STA. 5+50 TO 10+00

STATE OF TEXAS
RONALD RAMIREZ
81821
REGISTERED PROFESSIONAL ENGINEER
WIER & ASSOCIATES, INC.
LAST SHEET EDIT
DATE: 07-18-2007
WAK 04124
SHEET NO. U102