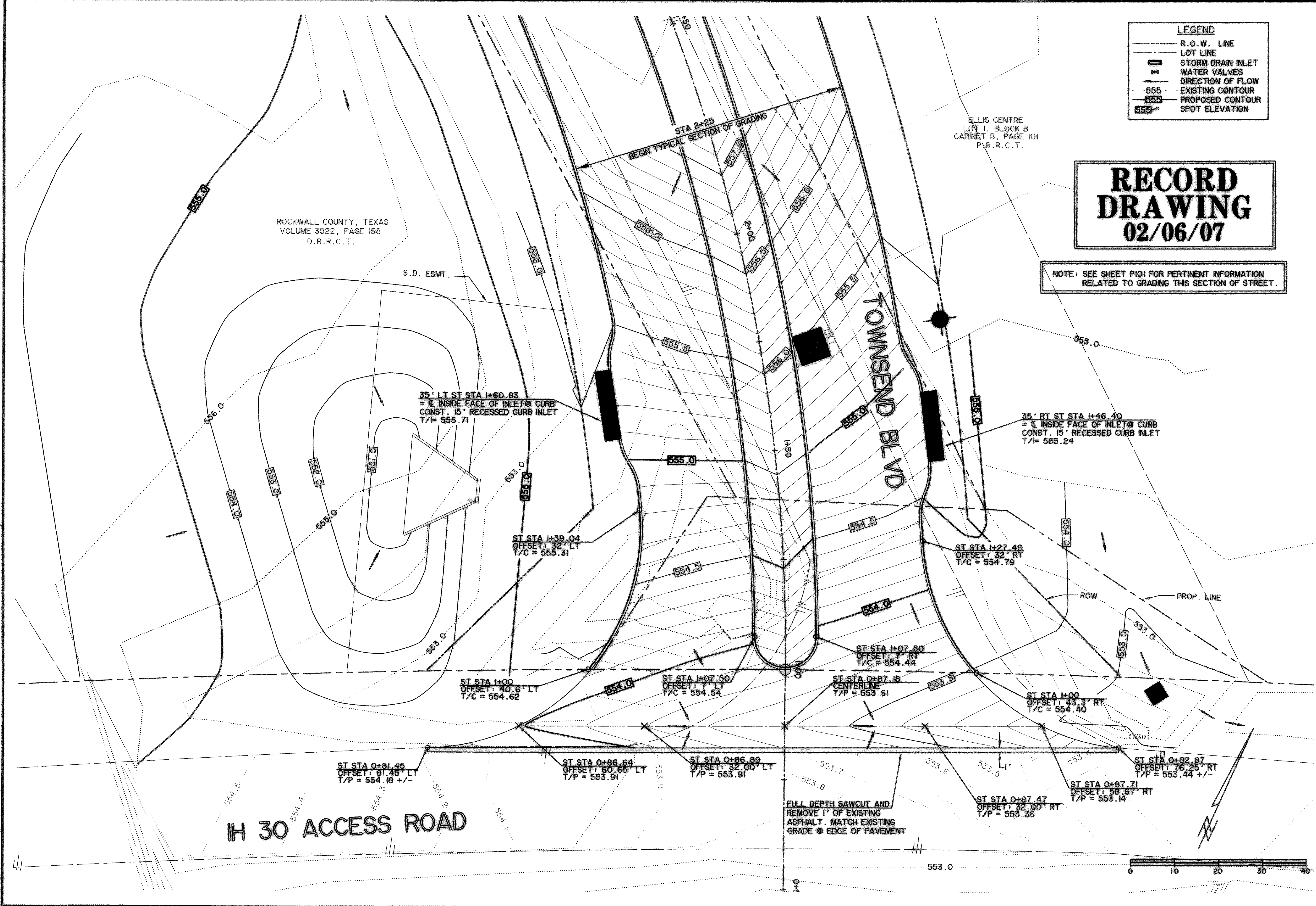


LEGEND	
---	R.O.W. LINE
---	LOT LINE
⊠	STORM DRAIN INLET
⊗	WATER VALVES
→	DIRECTION OF FLOW
---	EXISTING CONTOUR
---	PROPOSED CONTOUR
555.0	SPOT ELEVATION

**RECORD
DRAWING**
02/06/07

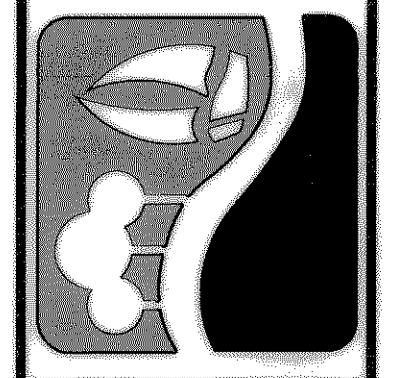
NOTE: SEE SHEET P101 FOR PERTINENT INFORMATION
RELATED TO GRADING THIS SECTION OF STREET.



ROCKWALL COUNTY, TEXAS
VOLUME 3522, PAGE 158
D.R.R.C.T.

ELLIS CENTRE
LOT 1, BLOCK B
CABINET B, PAGE 101
P.R.R.C.T.

PREPARED BY:
WIER & ASSOCIATES, INC.
ENGINEERS SURVEYORS LAND PLANNERS
4300 BELTWAY PLACE SUITE 130 ARLINGTON, TEXAS 76018 METRO (817)467-7700
1300 U.S. HIGHWAY 207 N. SUITE 101 WANSFELD, TEXAS 76063 METRO (817)477-8700
6849 ELM STREET FRISCO, TEXAS 75034 METRO (214)387-8000
www.wierassociates.com



**CITY OF ROCKWALL
TOWNSEND BLVD
(I.H. 30 TO JUSTIN)
& YELLOW JACKET LN
(S.H. 205 TO TOWNSEND)**

**INTERSECTION PLAN
AT I.H. 30
ACCESS ROAD**

STATE OF TEXAS
RONALD RAMIREZ
81821
REGISTERED
PROFESSIONAL ENGINEER
Ronald Ramirez
COPYRIGHT ©
WIER & ASSOCIATES, INC.
LAST SHEET DRAFT
DATE 07-26-2007
WA# 04124
**SHEET NO.
P204**

TIME 14.10 FILE: PAVE-H30-INT-04124.dwg