

RECORD DRAWING 02/06/07

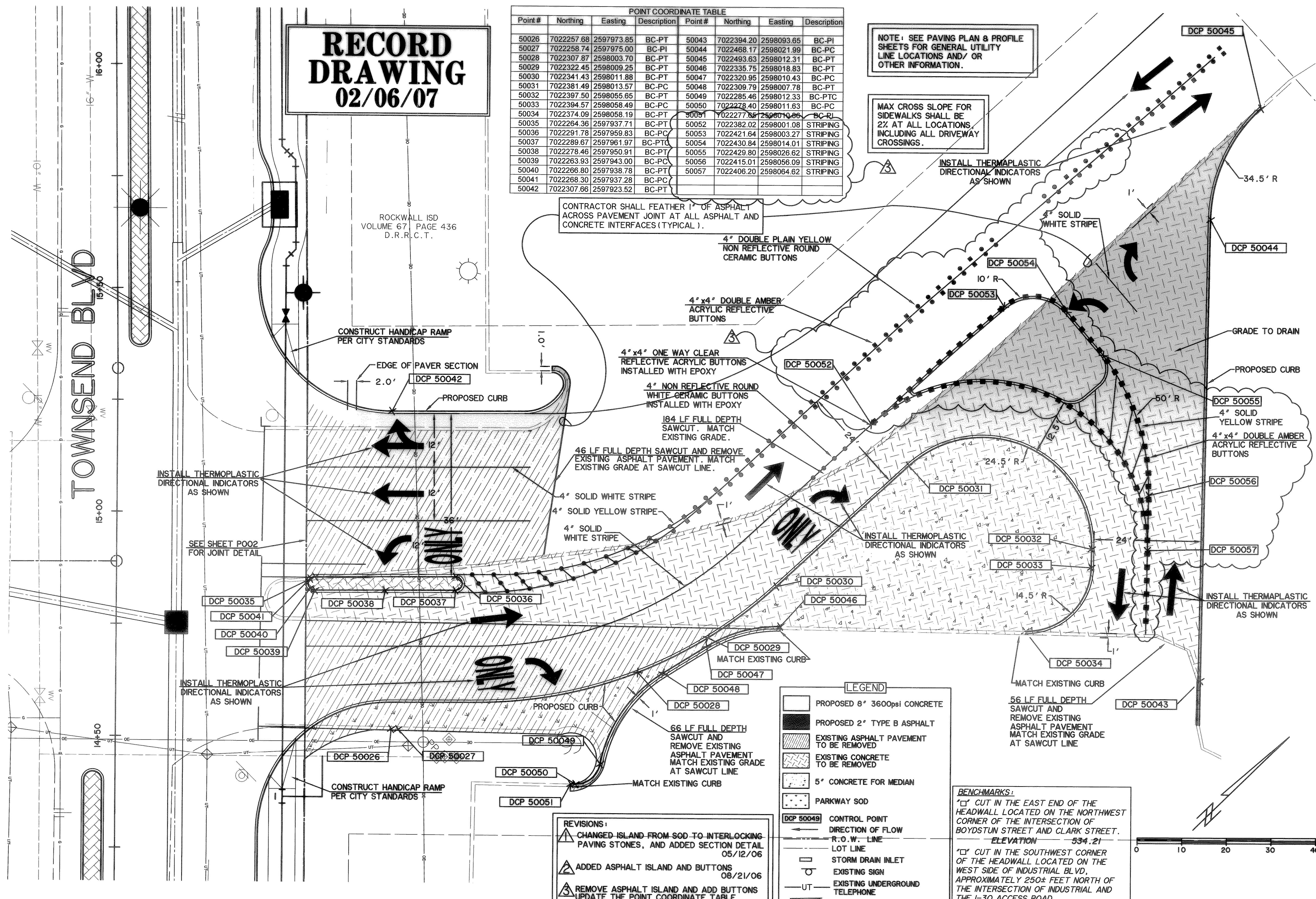
POINT COORDINATE TABLE							
Point #	Northing	Easting	Description	Point #	Northing	Easting	Description
50026	7022257.68	2597973.85	BC-PT	50043	7022394.20	2598093.65	BC-PI
50027	7022258.74	2597975.00	BC-PI	50044	7022468.17	2598021.99	BC-PC
50028	7022307.87	2598003.70	BC-PT	50045	7022493.63	2598012.31	BC-PT
50029	7022322.45	2598009.25	BC-PT	50046	7022335.75	2598018.83	BC-PT
50030	7022341.43	2598011.88	BC-PT	50047	7022320.95	2598010.43	BC-PC
50031	7022381.49	2598013.57	BC-PC	50048	7022309.79	2598007.78	BC-PT
50032	7022397.50	2598055.65	BC-PT	50049	7022285.46	2598012.33	BC-PTC
50033	7022394.57	2598058.49	BC-PC	50050	7022278.40	2598011.63	BC-PC
50034	7022374.09	2598058.19	BC-PT	50051	7022277.85	2598010.86	BC-PI
50035	7022264.36	2597937.71	BC-PT	50052	7022382.02	2598001.08	STRIPING
50036	7022291.78	2597959.83	BC-PC	50053	7022421.64	2598003.27	STRIPING
50037	7022289.67	2597961.97	BC-PTC	50054	7022430.84	2598014.01	STRIPING
50038	7022278.46	2597950.91	BC-PT	50055	7022429.80	2598026.62	STRIPING
50039	7022263.93	2597943.00	BC-PC	50056	7022415.01	2598056.09	STRIPING
50040	7022266.80	2597938.78	BC-PT	50057	7022406.20	2598064.62	STRIPING
50041	7022268.30	2597937.28	BC-PC				
50042	7022307.66	2597923.52	BC-PT				

NOTE: SEE PAVING PLAN & PROFILE SHEETS FOR GENERAL UTILITY LINE LOCATIONS AND/ OR OTHER INFORMATION.

MAX CROSS SLOPE FOR SIDEWALKS SHALL BE 2% AT ALL LOCATIONS INCLUDING ALL DRIVEWAY CROSSINGS.

ROCKWALL ISD
VOLUME 67 | PAGE 436
D.R.R.C.T.

CONTRACTOR SHALL FEATHER 1" OF ASPHALT ACROSS PAVEMENT JOINT AT ALL ASPHALT AND CONCRETE INTERFACES (TYPICAL).



- REVISIONS:
- CHANGED ISLAND FROM SOD TO INTERLOCKING PAVING STONES, AND ADDED SECTION DETAIL 05/12/06
 - ADDED ASPHALT ISLAND AND BUTTONS 08/21/06
 - REMOVE ASPHALT ISLAND AND ADD BUTTONS UPDATE THE POINT COORDINATE TABLE 02/21/07

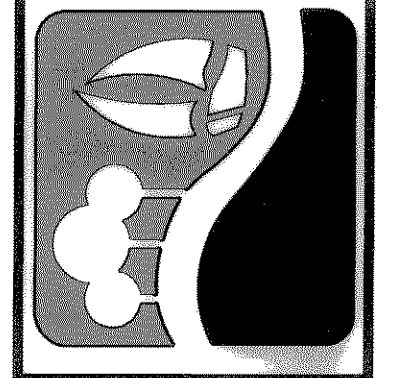
LEGEND	
[Symbol]	PROPOSED 8" 3600psi CONCRETE
[Symbol]	PROPOSED 2" TYPE B ASPHALT
[Symbol]	EXISTING ASPHALT PAVEMENT TO BE REMOVED
[Symbol]	EXISTING CONCRETE TO BE REMOVED
[Symbol]	5" CONCRETE FOR MEDIAN
[Symbol]	PARKWAY SOD
[Symbol]	CONTROL POINT
[Symbol]	DIRECTION OF FLOW
[Symbol]	R.O.W. LINE
[Symbol]	LOT LINE
[Symbol]	STORM DRAIN INLET
[Symbol]	EXISTING SIGN
[Symbol]	EXISTING UNDERGROUND TELEPHONE
[Symbol]	BARRIER FREE RAMP

BENCHMARKS:
 "C" CUT IN THE EAST END OF THE HEADWALL LOCATED ON THE NORTHWEST CORNER OF THE INTERSECTION OF BOYDSTUN STREET AND CLARK STREET. ELEVATION 534.21
 "C" CUT IN THE SOUTHWEST CORNER OF THE HEADWALL LOCATED ON THE WEST SIDE OF INDUSTRIAL BLVD, APPROXIMATELY 250± FEET NORTH OF THE INTERSECTION OF INDUSTRIAL AND THE I-30 ACCESS ROAD. ELEVATION 544.77



TIME 14:08 FILE: DRIVES3-04124-R2.dwg

PREPARED BY:
VIA WIER & ASSOCIATES, INC.
 ENGINEERS SURVEYORS LAND PLANNERS
 4300 BELWAY PLACE SUITE 130 ARLINGTON, TEXAS 76018 METRO (817)467-7700
 1300 U.S. HIGHWAY 287 N. SUITE 101 WAXFORD, TEXAS 76683 METRO (817)477-8700
 6848 ELM STREET FROCO, TEXAS 75034 METRO (214)387-8800
 www.viawier.com



CITY OF ROCKWALL
 TOWNSEND BLVD
 (I.H. 30 TO JUSTIN)
 & YELLOW JACKET LN
 (S.H. 205 TO TOWNSEND)

DRIVEWAY PLANS-
 SCHOOL FACILITIES
 ENTRANCE

STATE OF TEXAS
 RONALD RAMIREZ
 81821
 REGISTERED PROFESSIONAL ENGINEER
 2/12/07
 Ronald Ramirez
 COPYRIGHT ©
 WIER & ASSOCIATES, INC.
 LAST SHEET EDIT
 DATE 07-26-2007
 WA# 04124
SHEET NO.
P203