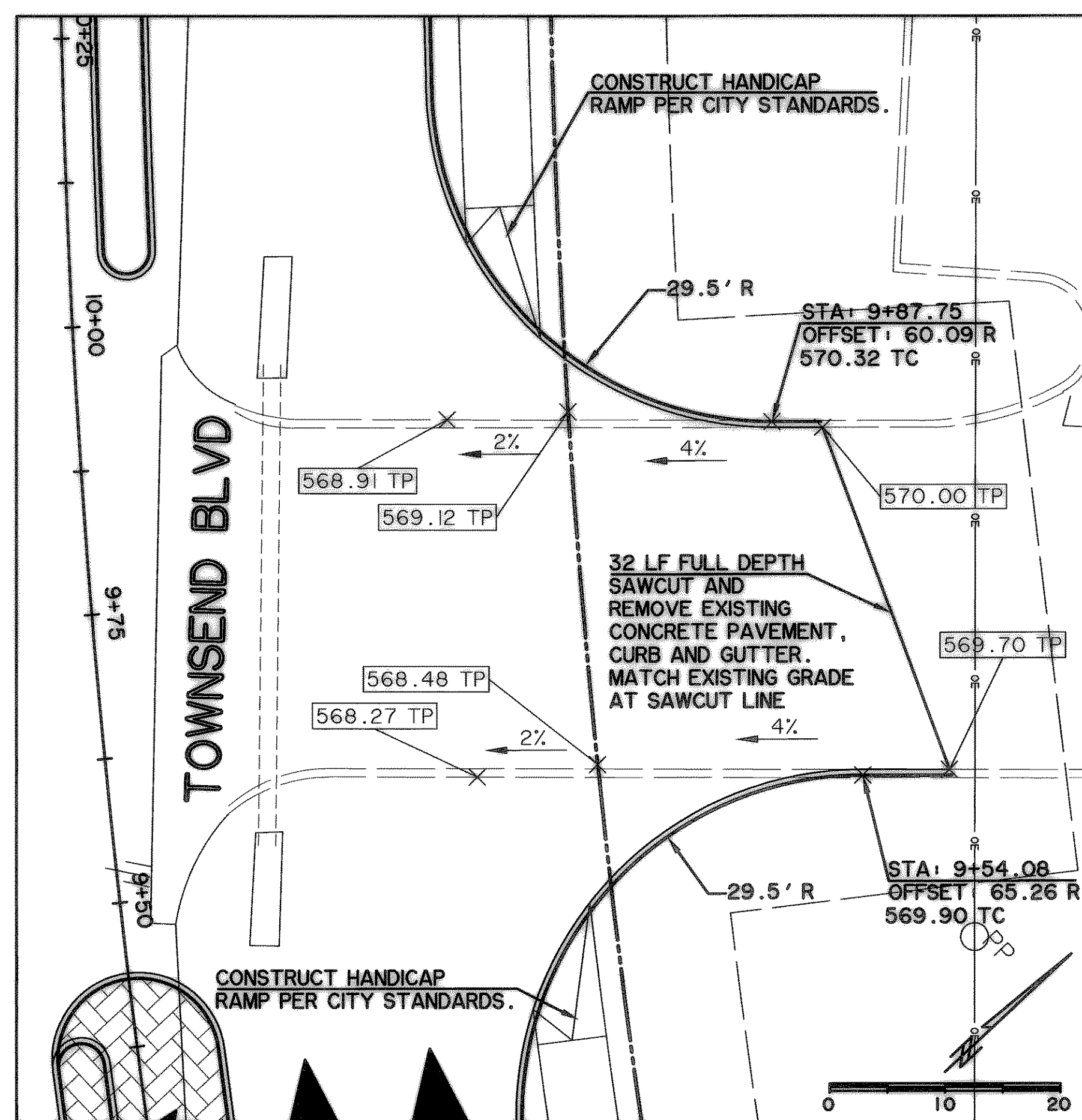
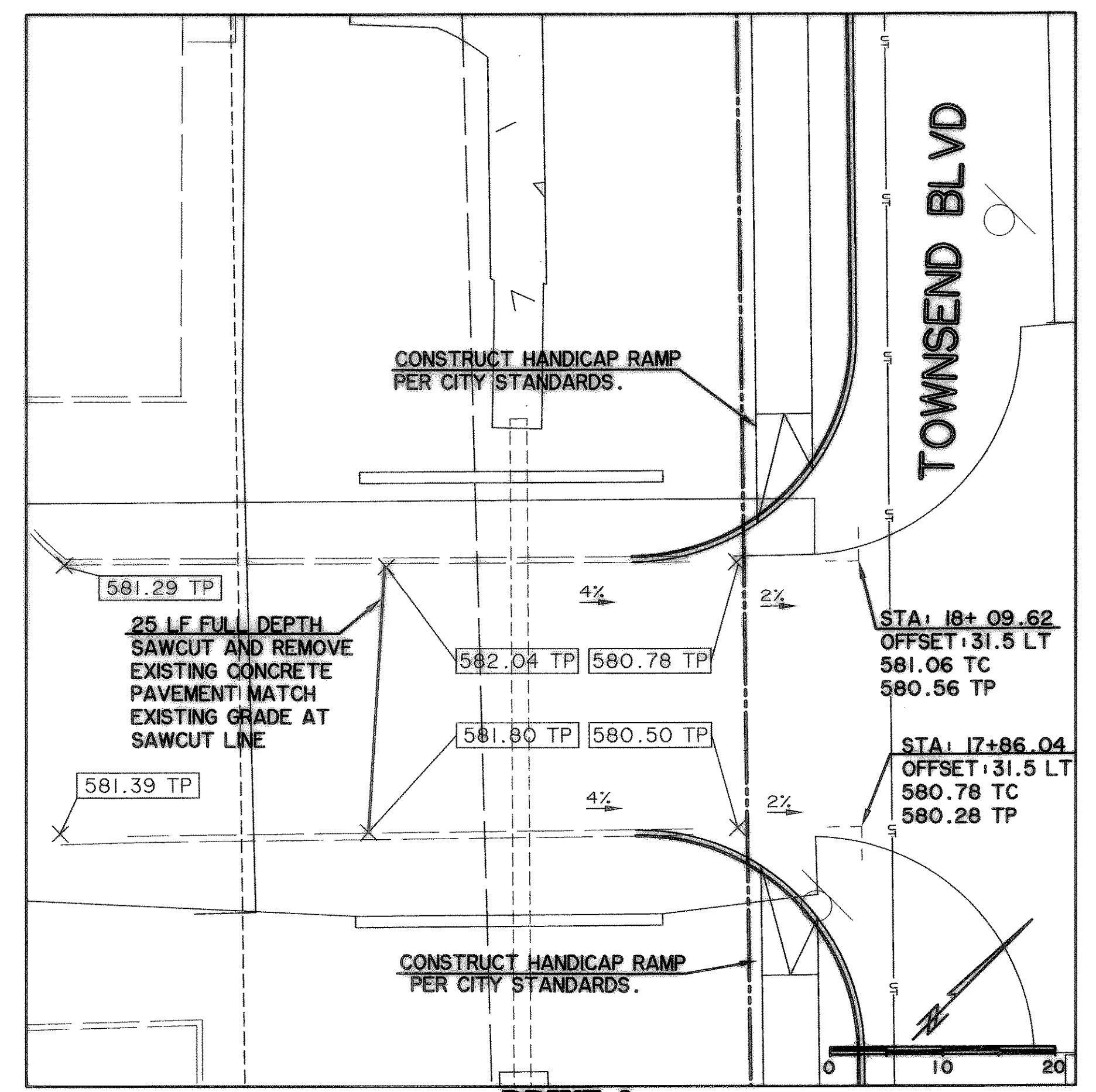


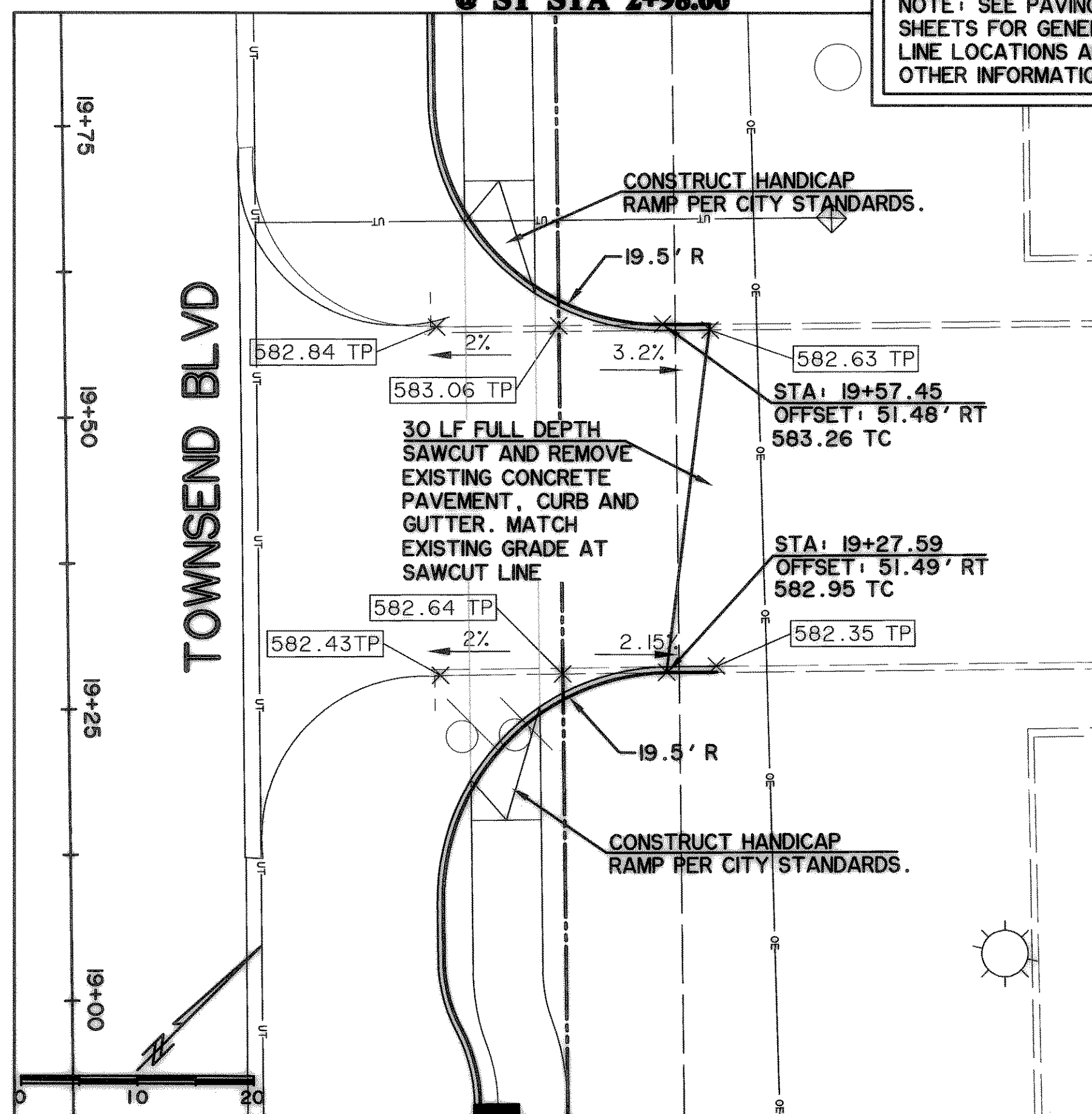
**DRIVE 1
@ ST STA 2+98.66**



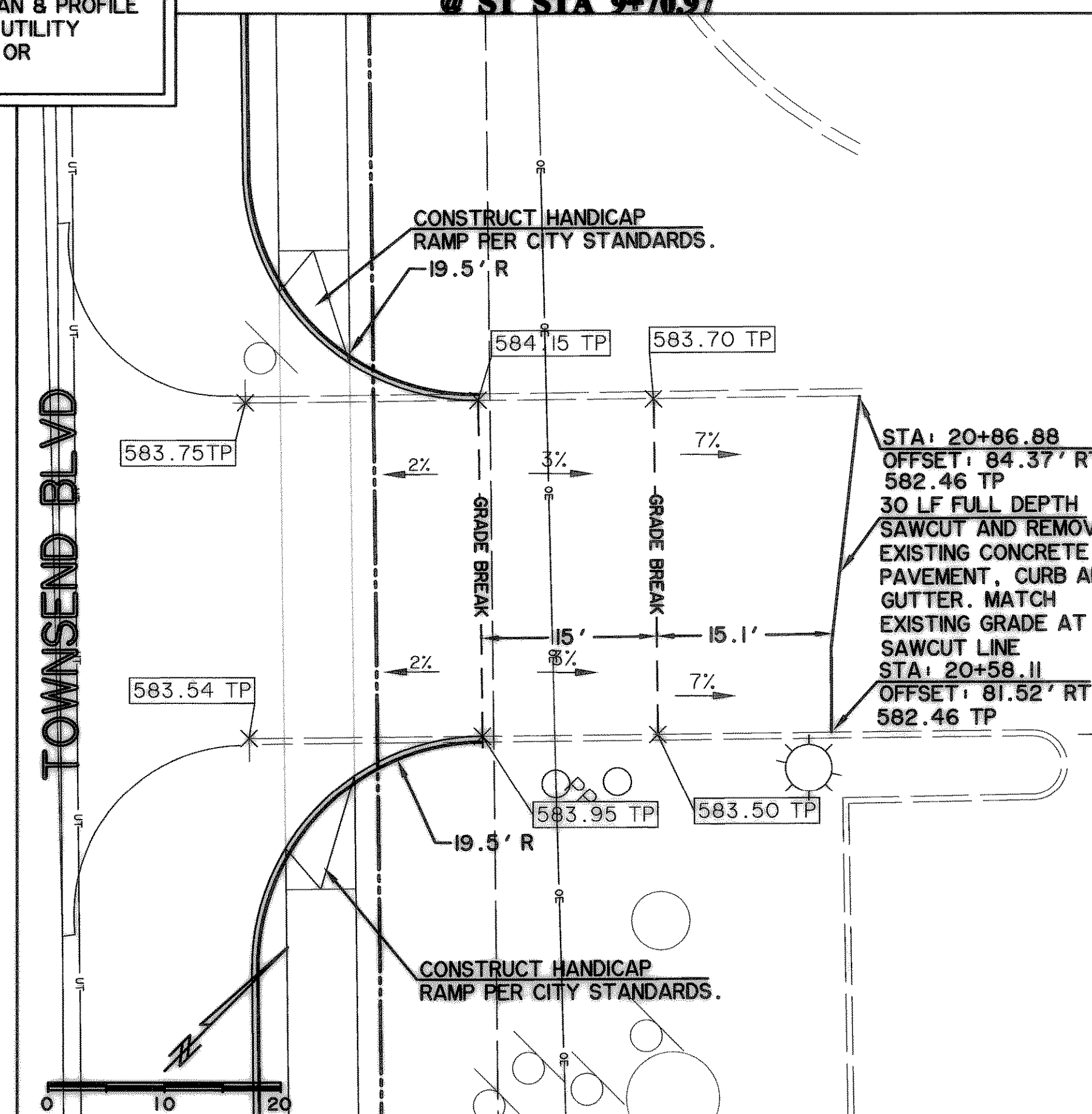
**DRIVE 2
@ ST STA 9+70.97**



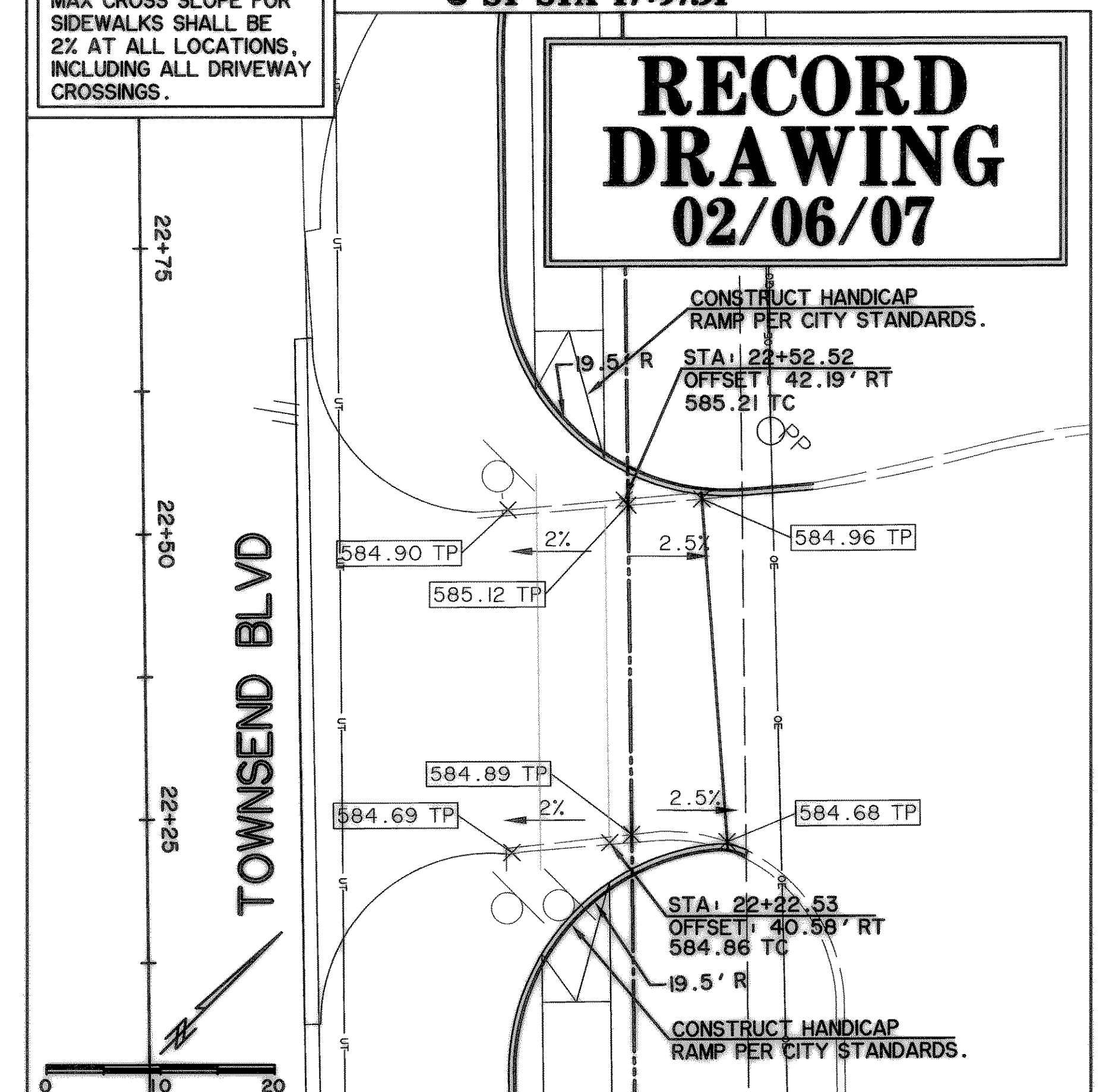
**DRIVE 3
@ ST STA 17+97.91**



**DRIVE 4
@ ST STA 19+42.52**



**DRIVE 5
@ ST STA 20+72.51**



**DRIVE 6
@ ST STA 22+37.53**

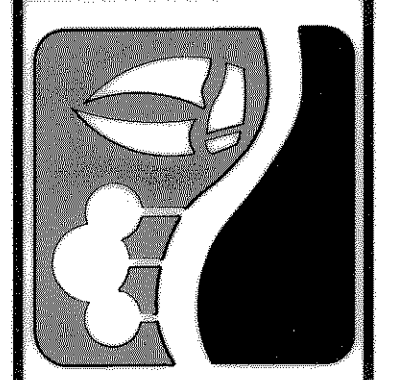
NOTE: SEE PAVING PLAN & PROFILE SHEETS FOR GENERAL UTILITY LINE LOCATIONS AND/ OR OTHER INFORMATION.

MAX CROSS SLOPE FOR SIDEWALKS SHALL BE 2% AT ALL LOCATIONS, INCLUDING ALL DRIVEWAY CROSSINGS.

**RECORD
DRAWING
02/06/07**

FILE: DRIVE1-04124.dwg
TIME: 11:15

PREPARED BY:
WIER & ASSOCIATES, INC.
ENGINEERS SURVEYORS LAND PLANNERS
4300 BELWAY PLACE SUITE 130 ARLINGTON, TEXAS 76018 METRO (817)467-7700
1300 U.S. HIGHWAY 287 N. SUITE 101 WANSFELD, TEXAS 76783 METRO (817)477-0700
6849 ELM STREET FRISCO, TEXAS 75034 METRO (214)387-8000
www.wierassociates.com



**CITY OF ROCKWALL
TOWNSEND BLVD
(I.H. 30 TO JUSTIN)
& YELLOW JACKET LN
(S.H. 205 TO TOWNSEND)**

**DRIVEWAY PLANS
(DRIVES #1-6)**

STATE OF TEXAS
RONALD RAMIREZ
81821
REGISTERED
PROFESSIONAL ENGINEER
Copyright ©
WIER & ASSOCIATES, INC.
LAST SHEET EDIT
DATE 07-26-2007
WA# 04124
**SHEET NO.
P201**