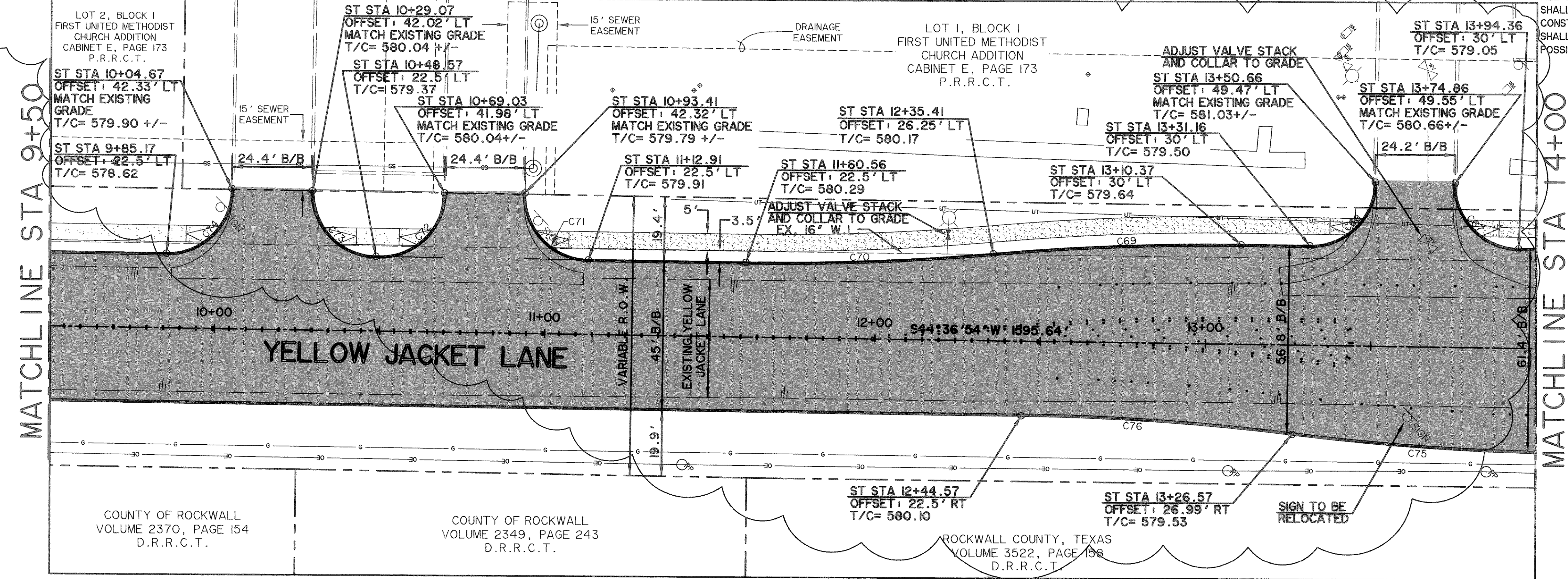


CURVE TABLE						
CURVE	DELTA	LENGTH, FT	RADIUS, FT	TANGENT, FT	CHORD BR	CHORD, FT
C67	90°09'05"	30.68	19.50	19.55	N89°41'26"E	27.61
C68	89°54'50"	30.60	19.50	19.47	N00°20'31"W	27.56
C69	05°43'55"	75.08	750.50	37.57	N41°44'56"E	75.05
C70	05°43'55"	74.98	749.50	37.52	N41°44'56"E	74.95
C71	90°56'41"	30.95	19.50	19.82	N89°54'46"W	27.80
C72	89°56'46"	30.61	19.50	19.48	N00°21'29"W	27.56
C73	90°03'14"	30.65	19.50	19.52	N89°38'31"E	27.59
C74	90°58'43"	30.86	19.50	19.84	N00°52'28"W	27.81
C75	06°16'52"	82.27	750.50	41.12	N47°45'19"E	82.23
C76	06°16'52"	82.16	749.50	41.18	N47°45'19"E	82.12

**CAUTION !!!**  
UNDERGROUND UTILITIES

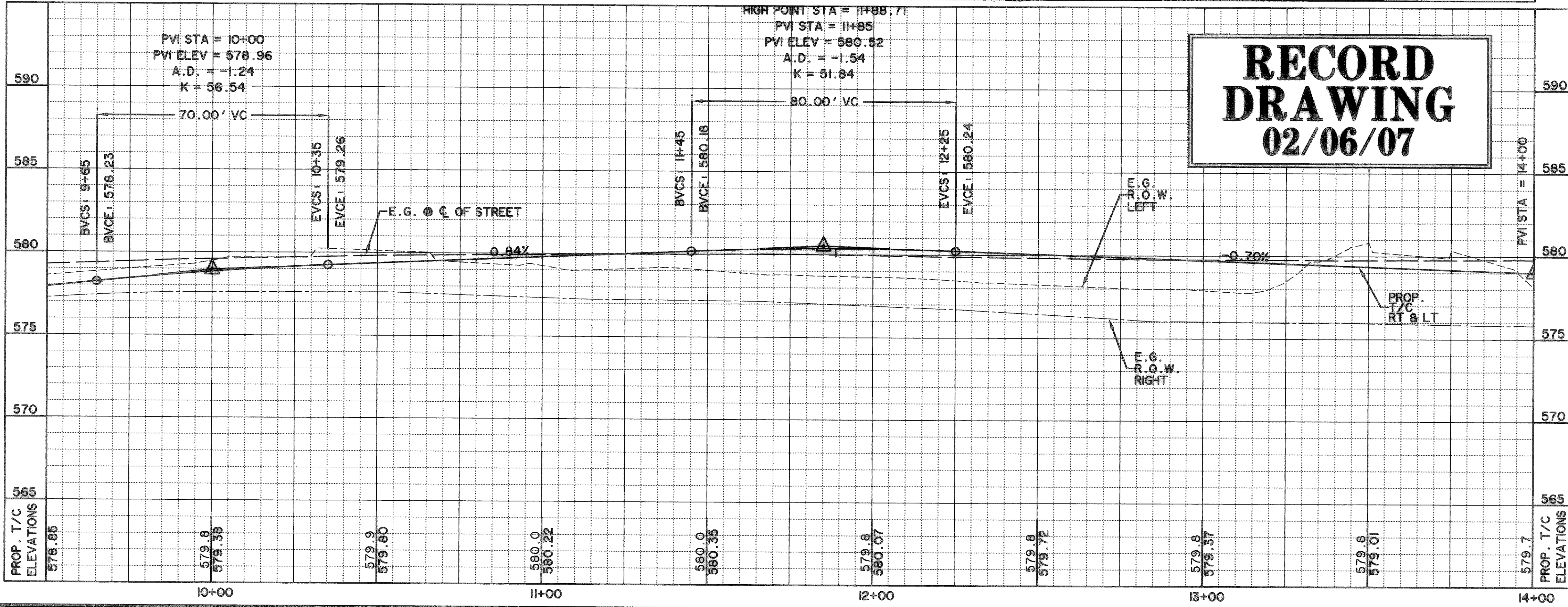
EXISTING UTILITIES AND UNDERGROUND FACILITIES INDICATED ON THESE PLANS HAVE BEEN LOCATED FROM REFERENCE INFORMATION SUPPLIED BY VARIOUS OWNERS OF THE FACILITIES. THE ENGINEER DOES NOT ACCEPT THE RESPONSIBILITY FOR THE UTILITY LOCATIONS SHOWN, IT SHALL BE THE RESPONSIBILITY OF THE CONTRACTOR TO VERIFY BOTH HORIZONTALLY AND VERTICALLY THE LOCATION OF ALL EXISTING UTILITIES AND UNDERGROUND FACILITIES PRIOR TO CONSTRUCTION, TO TAKE NECESSARY PRECAUTIONS IN ORDER TO PROTECT ALL FACILITIES ENCOUNTERED, AND TO NOTIFY THE ENGINEER PROMPTLY OF ALL CONFLICTS OF THE WORK WITH EXISTING FACILITIES. THE CONTRACTOR SHALL PRESERVE AND PROTECT ALL EXISTING UTILITIES FROM DAMAGE DURING CONSTRUCTION. ANY DAMAGE BY THE CONTRACTOR TO EXISTING UTILITIES SHALL BE REPAIRED BY THE CONTRACTOR AT HIS EXPENSE. CONTACT ALL POSSIBLE UTILITY AND UNDERGROUND FACILITY OWNERS.

PREPARED BY:  
**WIA WIER & ASSOCIATES, INC.**  
ENGINEERS SURVEYORS LAND PLANNERS  
4300 BELLEVUE PLACE, SUITE 130, ARLINGTON, TEXAS 76010, METRO (817)467-7700  
1300 U.S. HIGHWAY 807 N., SUITE 101, WAREFIELD, TEXAS 76063, METRO (817)477-8700  
6849 ELM STREET, PERCO, TEXAS 75084, METRO (214)387-8000  
www.wierassociates.com



- NOTES
1. CONTRACTOR SHALL COORDINATE RELOCATIONS WITH FRANCHISE UTILITIES AT LEAST THREE WEEKS PRIOR TO CONSTRUCTION.
  2. ALL DIMENSIONS, LINES, CURVES, AND POINTS ARE TO THE BACK OF CURB UNLESS NOTED OTHERWISE.

REVISION:  
 MODIFIED T/C ELEVATIONS AND LOCATIONS  
 3/21/06



**RECORD DRAWING**  
02/06/07

BENCHMARKS:  
 CUT IN THE EAST END OF THE HEADWALL LOCATED ON THE NORTHWEST CORNER OF THE INTERSECTION OF BOYDSTUN STREET AND CLARK STREET. ELEVATION 534.21  
 CUT IN THE SOUTHWEST CORNER OF THE HEADWALL LOCATED ON THE WEST SIDE OF INDUSTRIAL BLVD, APPROXIMATELY 250± FEET NORTH OF THE INTERSECTION OF INDUSTRIAL AND THE I-30 ACCESS ROAD. ELEVATION 544.77

- LEGEND
- 4200 PSI CONCRETE PAVEMENT
  - PROPOSED SIDEWALK
  - PROPOSED ASPHALT PAVEMENT
  - INTERLOCKING PAVING STONES TO BE APPROVED BY CITY
  - W EXISTING WATER LINE
  - SS EXISTING SANITARY SEWER LINE
  - R.O.W. LINE
  - LOT LINE
  - FIRE HYDRANT
  - STORM DRAIN INLET
  - WATER VALVE
  - DIRECTION OF FLOW
  - EXISTING SIGN
  - OE EXISTING OVERHEAD ELECTRIC
  - G EXISTING UNDERGROUND GAS
  - X EXISTING WATER VALVE
  - UT EXISTING UNDERGROUND TELEPHONE
  - BARRIER FREE RAMP TO BE CONST. W/PROJECT

CITY OF ROCKWALL  
TOWNSEND BLVD  
(L.H. 30 TO JUSTIN)  
& YELLOW JACKET LN  
(S.H. 205 TO TOWNSEND)

**YELLOW JACKET LANE-PAVING PLAN AND PROFILE, STA 9+50 TO 14+00**

STATE OF TEXAS  
  
 RONALD RAMIREZ  
 81821  
 REGISTERED PROFESSIONAL ENGINEER  
 COPYRIGHT © WIER & ASSOCIATES, INC.  
 LAST SHEET EDIT DATE 07-26-2007  
 WA# 04124  
**SHEET NO. P111**