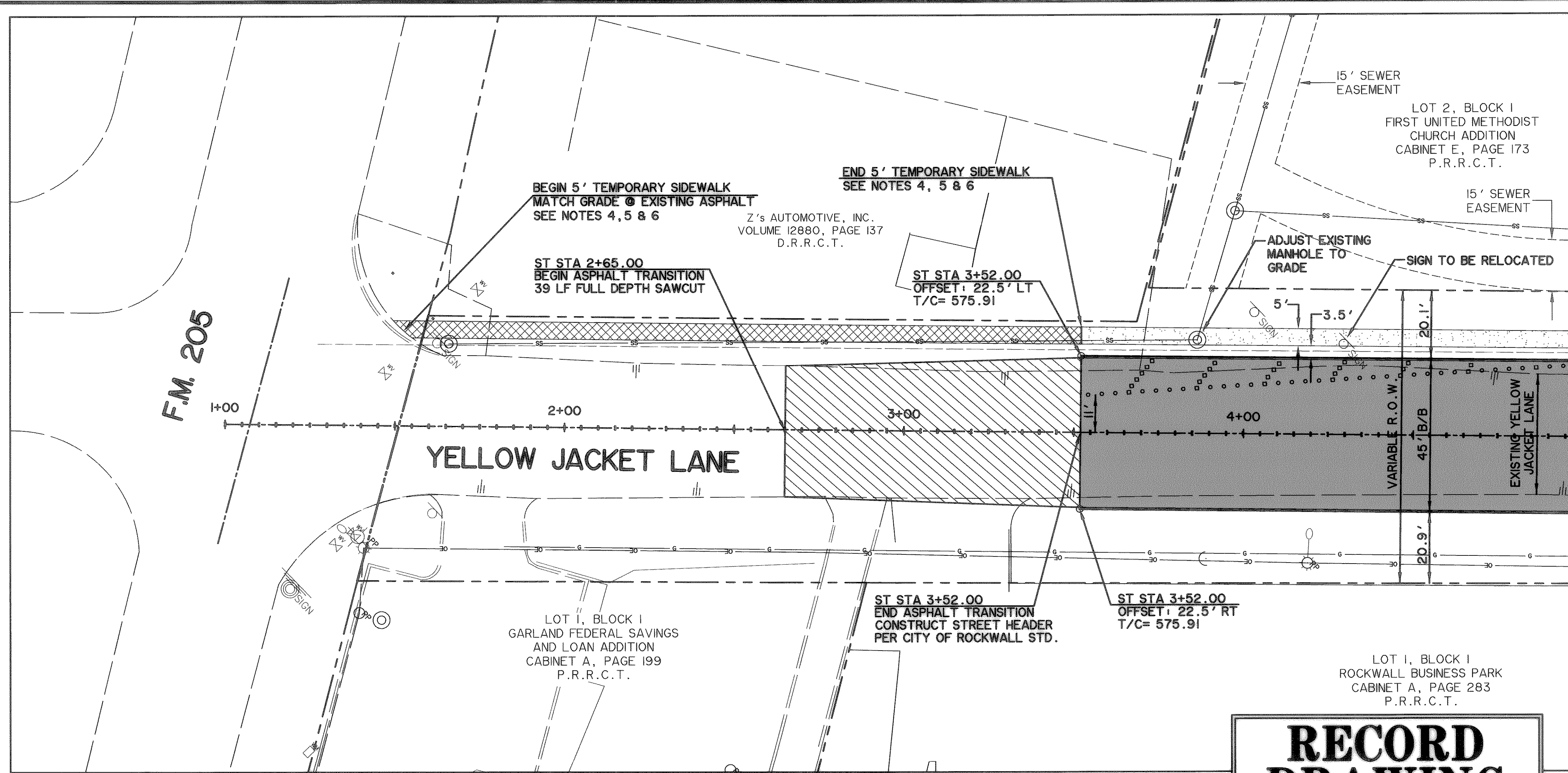


**CAUTION !!!**  
UNDERGROUND UTILITIES

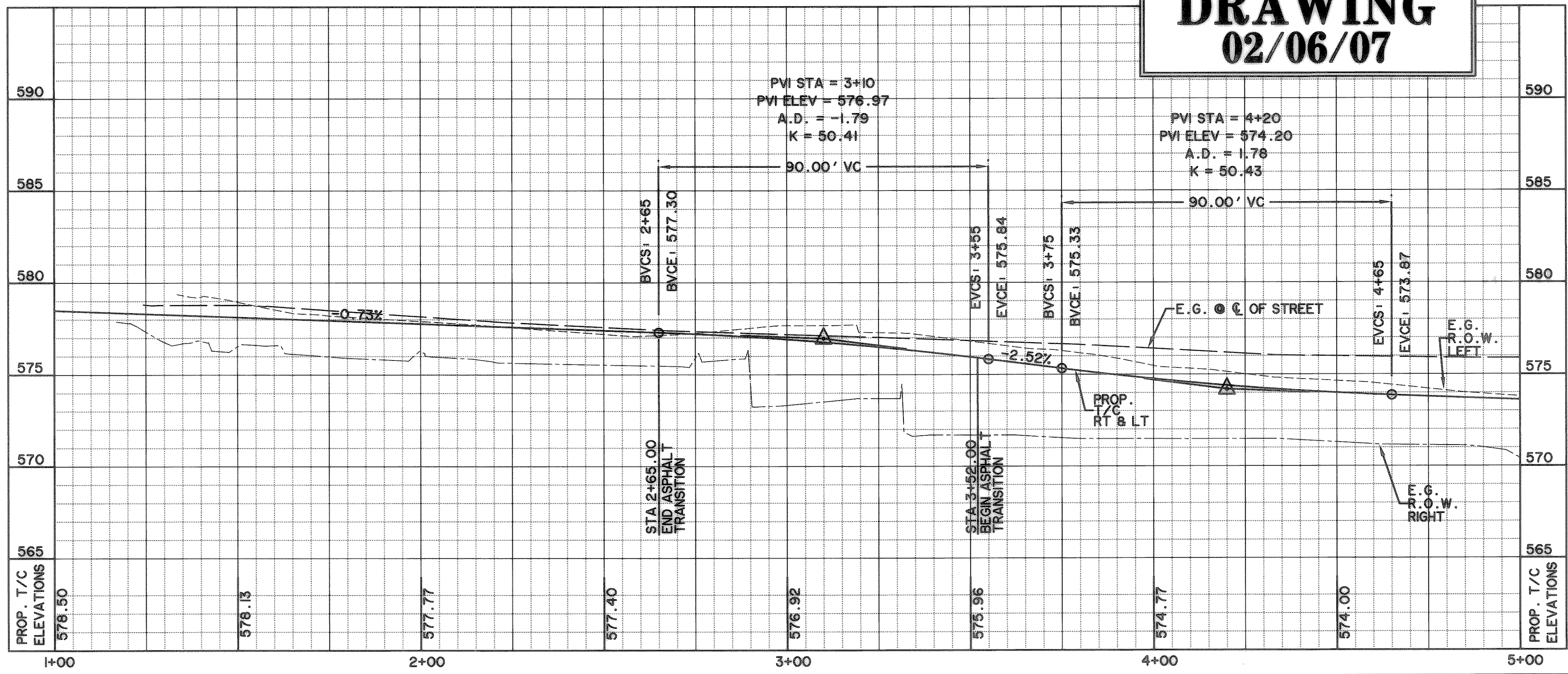
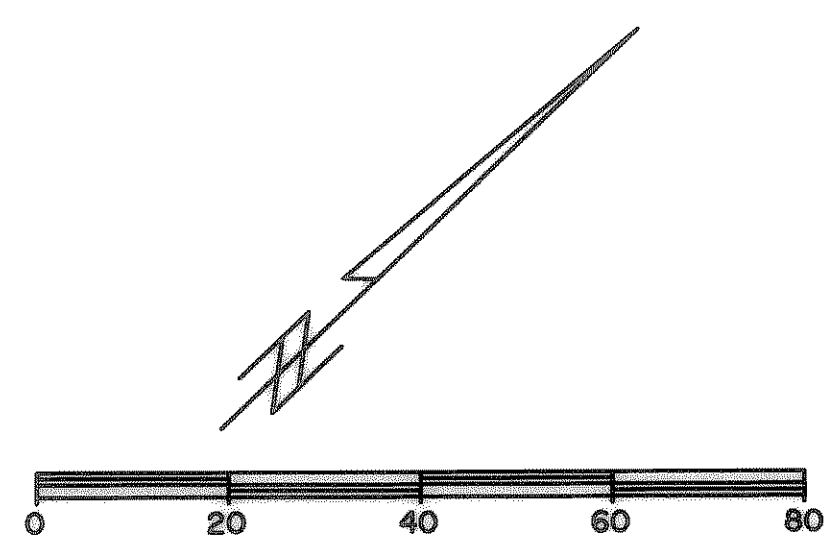
EXISTING UTILITIES AND UNDERGROUND FACILITIES INDICATED ON THESE PLANS HAVE BEEN LOCATED FROM REFERENCE INFORMATION SUPPLIED BY VARIOUS OWNERS OF THE FACILITIES. THE ENGINEER DOES NOT ACCEPT THE RESPONSIBILITY FOR THE UTILITY LOCATIONS SHOWN, IT SHALL BE THE RESPONSIBILITY OF THE CONTRACTOR TO VERIFY BOTH HORIZONTALLY AND VERTICALLY THE LOCATION OF ALL EXISTING UTILITIES AND UNDERGROUND FACILITIES PRIOR TO CONSTRUCTION, TO TAKE NECESSARY PRECAUTIONS IN ORDER TO PROTECT ALL FACILITIES ENCOUNTERED, AND TO NOTIFY THE ENGINEER PROMPTLY OF ALL CONFLICTS OF THE WORK WITH EXISTING UTILITIES. THE CONTRACTOR SHALL PRESERVE AND PROTECT ALL EXISTING UTILITIES FROM DAMAGE DURING CONSTRUCTION. ANY DAMAGE BY THE CONTRACTOR TO EXISTING UTILITIES SHALL BE REPAIRED BY THE CONTRACTOR AT HIS EXPENSE. CONTACT ALL POSSIBLE UTILITY AND UNDERGROUND FACILITY OWNERS.

**NOTES**

1. CONTRACTOR SHALL COORDINATE RELOCATIONS WITH FRANCHISE UTILITIES AT LEAST THREE WEEKS PRIOR TO CONSTRUCTION.
2. ALL DIMENSIONS, LINES, CURVES, AND POINTS ARE TO THE BACK OF CURB UNLESS NOTED OTHERWISE.
3. CONTRACTOR TO COORDINATE WITH LAND OWNERS FOR ANY DRIVEWAY CLOSURES.
4. SIDE WALK TO BE AT EXISTING GRADE.
5. NO CROSS SLOPE MAY BE GREATER THAN 2%.
6. TEMPORARY SIDEWALK IS NOT TO BE STEEL REINFORCED.



**RECORD DRAWING**  
**02/06/07**

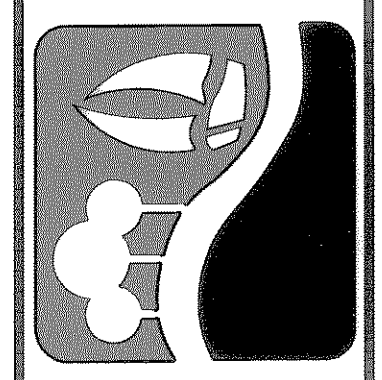


**BENCHMARKS:**  
 "□" CUT IN THE EAST END OF THE HEADWALL LOCATED ON THE NORTHWEST CORNER OF THE INTERSECTION OF BOYDSTUN STREET AND CLARK STREET. ELEVATION 534.21  
 "□" CUT IN THE SOUTHWEST CORNER OF THE HEADWALL LOCATED ON THE WEST SIDE OF INDUSTRIAL BLVD. APPROXIMATELY 250± FEET NORTH OF THE INTERSECTION OF INDUSTRIAL AND THE I-30 ACCESS ROAD. ELEVATION 544.77

**LEGEND**

- 4200 PSI CONCRETE PAVEMENT
- PROPOSED SIDEWALK
- PROPOSED TEMP. SIDEWALK
- PROPOSED ASPHALT PAVEMENT
- INTERLOCKING PAVING STONES TO BE APPROVED BY CITY
- EXISTING WATER LINE
- EXISTING SANITARY SEWER LINE
- R.O.W. LINE
- LOT LINE
- FIRE HYDRANT
- STORM DRAIN INLET
- WATER VALVE
- DIRECTION OF FLOW
- EXISTING SIGN
- EXISTING OVERHEAD ELECTRIC
- EXISTING UNDERGROUND GAS
- EXISTING WATER VALVE
- EXISTING UNDERGROUND TELEPHONE
- BARRIER FREE RAMP TO BE CONST. W/PROJECT

PREPARED BY:  
**WIA WIER & ASSOCIATES, INC.**  
**ENGINEERS SURVEYORS LAND PLANNERS**  
 4300 BELLEVUE PLACE SUITE 130 ARLINGTON, TEXAS 76018 METRO (817)467-7700  
 1300 U.S. HIGHWAY 287 N. SUITE 101 WAXFORD, TEXAS 76063 METRO (817)477-8700  
 6848 ELM STREET FRODO, TEXAS 75044 METRO (214)387-8000  
 www.wierassociates.com



**CITY OF ROCKWALL**  
**TOWNSEND BLVD**  
**(L.H. 30 TO JUSTIN)**  
**& YELLOW JACKET LN**  
**(S.H. 205 TO TOWNSEND)**

**YELLOW JACKET**  
**LANE-**  
**PAVING PLAN**  
**AND PROFILE,**  
**STA 1+00 TO 5+00**

STATE OF TEXAS  
 RONALD RAMIREZ  
 81821  
 REGISTERED PROFESSIONAL ENGINEER  
 Copyright © Wier & Associates, Inc.  
 LAST SHEET EDIT  
 DATE 07-26-2007  
 WA# 04124  
**SHEET NO.**  
**P109**