

ST STA 37+00  
 OFFSET: 4.04' LT  
 MATCH EXIST.

30 L.F. FULL DEPTH  
 SAWCUT @ 1' FROM  
 EDGE OF PAVEMENT.  
 MATCH EXISTING GRADE  
 ALONG SAWCUT LINE.

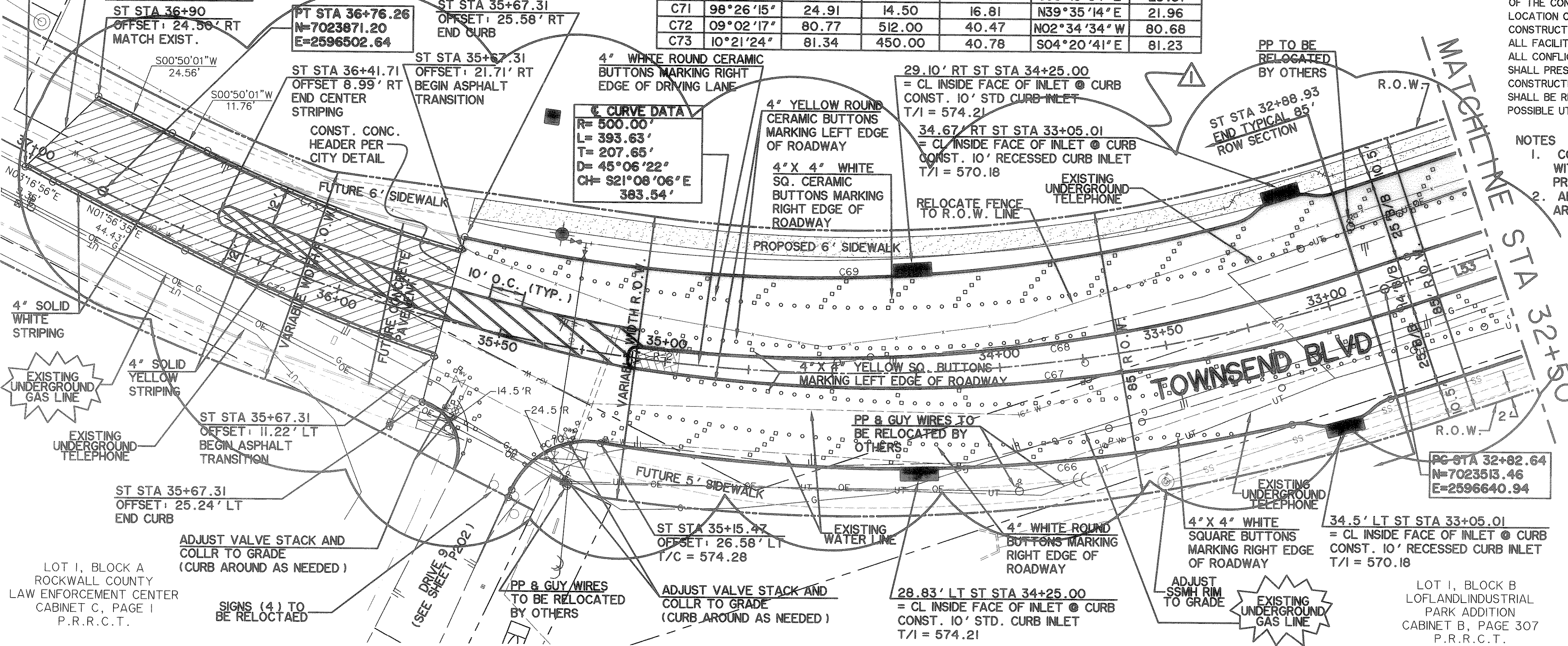
NAN A. SMART,  
 W.I. LOFLAND,  
 AND JULIANNA BOND  
 VOLUME 70, PAGE 183  
 D.R.R.C.T.

CURVE TABLE						
CURVE	DELTA	LENGTH, FT	RADIUS, FT	TANGENT, FT	CHORD BR	CHORD, FT
C66	22°46'26"	207.68	522.50	105.23	S26°59'59"E	206.23
C67	27°05'04"	236.12	499.50	120.31	S30°08'45"E	233.93
C68	24°47'30"	216.56	500.50	110.00	S31°17'33"E	214.88
C69	27°52'08"	232.26	477.50	118.47	S26°34'23"E	229.97
C70	75°13'37"	32.17	24.50	18.88	S53°13'34"E	29.91
C71	98°26'15"	24.91	14.50	16.81	N39°35'14"E	21.96
C72	09°02'17"	80.77	512.00	40.47	N02°34'34"W	80.68
C73	10°21'24"	81.34	450.00	40.78	S04°20'41"E	81.23

**CAUTION !!!**  
 UNDERGROUND UTILITIES

EXISTING UTILITIES AND UNDERGROUND FACILITIES INDICATED ON THESE PLANS HAVE BEEN LOCATED FROM REFERENCE INFORMATION SUPPLIED BY VARIOUS OWNERS OF THE FACILITIES. THE ENGINEER DOES NOT ACCEPT THE RESPONSIBILITY FOR THE UTILITY LOCATIONS SHOWN, IT SHALL BE THE RESPONSIBILITY OF THE CONTRACTOR TO VERIFY BOTH HORIZONTALLY AND VERTICALLY THE LOCATION OF ALL EXISTING UTILITIES AND UNDERGROUND FACILITIES PRIOR TO CONSTRUCTION, TO TAKE NECESSARY PRECAUTIONS IN ORDER TO PROTECT ALL FACILITIES ENCOUNTERED, AND TO NOTIFY THE ENGINEER PROMPTLY OF ALL CONFLICTS OF THE WORK WITH EXISTING FACILITIES. THE CONTRACTOR SHALL PRESERVE AND PROTECT ALL EXISTING UTILITIES FROM DAMAGE DURING CONSTRUCTION. ANY DAMAGE BY THE CONTRACTOR TO EXISTING UTILITIES SHALL BE REPAIRED BY THE CONTRACTOR AT HIS EXPENSE. CONTACT ALL POSSIBLE UTILITY AND UNDERGROUND FACILITY OWNERS.

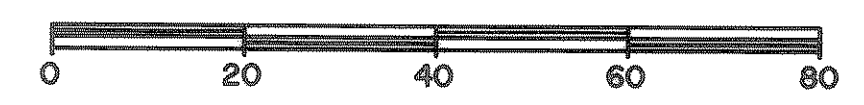
- NOTES
- CONTRACTOR SHALL COORDINATE RELOCATIONS WITH FRANCHISE UTILITIES AT LEAST THREE WEEKS PRIOR TO CONSTRUCTION.
  - ALL DIMENSIONS, LINES, CURVES, AND POINTS ARE TO THE BACK OF CURB UNLESS NOTED OTHERWISE.



REVISIONS:

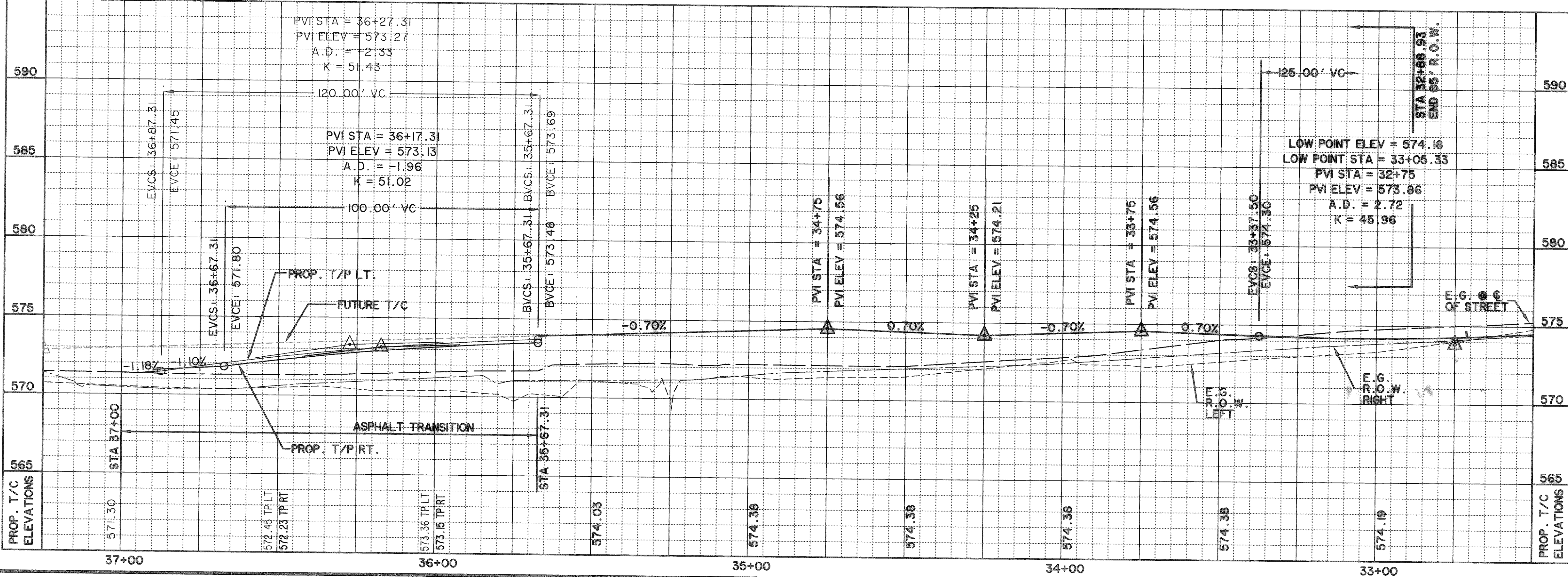
05/22/06  
 EXTENDED ROADWAY TO STA 35+67.31 AND ADDED DRIVE 9

**RECORD DRAWING**  
 02/06/07



LOT 1, BLOCK A  
 ROCKWALL COUNTY  
 LAW ENFORCEMENT CENTER  
 CABINET C, PAGE 1  
 P.R.R.C.T.

LOT 1, BLOCK B  
 LOFLAND INDUSTRIAL  
 PARK ADDITION  
 CABINET B, PAGE 307  
 P.R.R.C.T.



**LEGEND**

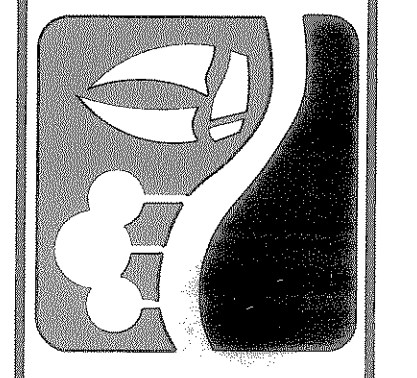
- 4200 PSI CONCRETE PAVEMENT
- PROPOSED SIDEWALK
- PROPOSED ASPHALT PAVEMENT
- INTERLOCKING PAVING STONES TO BE APPROVED BY CITY
- W - EXISTING WATER LINE
- SS - EXISTING SANITARY SEWER LINE
- R.O.W. LINE
- LOT LINE
- FIRE HYDRANT
- STORM DRAIN INLET
- WATER VALVES
- DIRECTION OF FLOW
- EXISTING SIGN
- OE - EXISTING OVERHEAD ELECTRIC
- G - EXISTING UNDERGROUND GAS
- X - EXISTING WATER VALVE
- UT - EXISTING UNDERGROUND TELEPHONE
- BARRIER FREE RAMP TO BE CONST. W/PROJECT

**BENCHMARKS:**

"C" CUT IN THE EAST END OF THE HEADWALL LOCATED ON THE NORTHWEST CORNER OF THE INTERSECTION OF BOYDSTUN STREET AND CLARK STREET.  
 ELEVATION 534.21

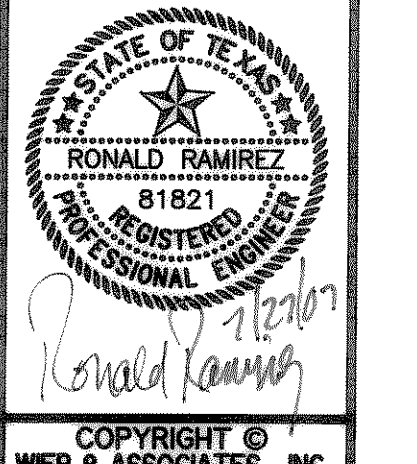
"C" CUT IN THE SOUTHWEST CORNER OF THE HEADWALL LOCATED ON THE WEST SIDE OF INDUSTRIAL BLVD., APPROXIMATELY 250± FEET NORTH OF THE INTERSECTION OF INDUSTRIAL AND THE I-30 ACCESS ROAD.  
 ELEVATION 544.77

PREPARED BY:  
**VIA WIER & ASSOCIATES, INC.**  
 ENGINEERS SURVEYORS LAND PLANNERS  
 4300 BELLEVUE PLACE SUITE 130 ARLINGTON, TEXAS 76018 METRO (817)467-7700  
 1300 U.S. HIGHWAY 267 N. SUITE 101 WAXSWELL, TEXAS 76883 METRO (817)477-6700  
 6840 ELIA STREET FRESNO, TEXAS 75034 METRO (214)367-8000  
 www.viawier.com



**CITY OF ROCKWALL**  
**TOWNSEND BLVD**  
**PAVING PLAN**  
**(I.H. 30 TO JUSTIN)**  
**& YELLOW JACKET LN**  
**(S.H. 205 TO TOWNSEND)**

**TOWNSEND BLVD-**  
**PAVING PLAN**  
**AND PROFILE,**  
**STA 32+50 TO 37+00**



COPYRIGHT ©  
 WIER & ASSOCIATES, INC.  
 LAST SHEET EDIT  
 DATE 07-26-2007  
 WA# 04124

**SHEET NO.**  
**P108**