

**CAUTION !!!**  
UNDERGROUND UTILITIES

EXISTING UTILITIES AND UNDERGROUND FACILITIES INDICATED ON THESE PLANS HAVE BEEN LOCATED FROM REFERENCE INFORMATION SUPPLIED BY VARIOUS OWNERS OF THE FACILITIES. THE ENGINEER DOES NOT ACCEPT THE RESPONSIBILITY FOR THE UTILITY LOCATIONS SHOWN. IT SHALL BE THE RESPONSIBILITY OF THE CONTRACTOR TO VERIFY BOTH HORIZONTALLY AND VERTICALLY THE LOCATION OF ALL EXISTING UTILITIES AND UNDERGROUND FACILITIES PRIOR TO CONSTRUCTION, TO TAKE NECESSARY PRECAUTIONS IN ORDER TO PROTECT ALL FACILITIES ENCOUNTERED, AND TO NOTIFY THE ENGINEER PROMPTLY OF ALL CONFLICTS OF THE WORK WITH EXISTING FACILITIES. THE CONTRACTOR SHALL PRESERVE AND PROTECT ALL EXISTING UTILITIES FROM DAMAGE DURING CONSTRUCTION. ANY DAMAGE BY THE CONTRACTOR TO EXISTING UTILITIES SHALL BE REPAIRED BY THE CONTRACTOR AT HIS EXPENSE. CONTACT ALL POSSIBLE UTILITY AND UNDERGROUND FACILITY OWNERS.

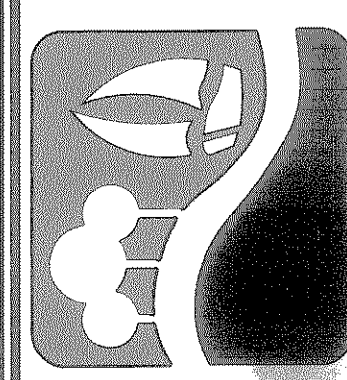
**REVISIONS:**

1	CHANGED T/C ELEVATIONS	05/11/06
2	EXTENDED ROADWAY TO STA 35+67.31	05/22/06

**LEGEND**

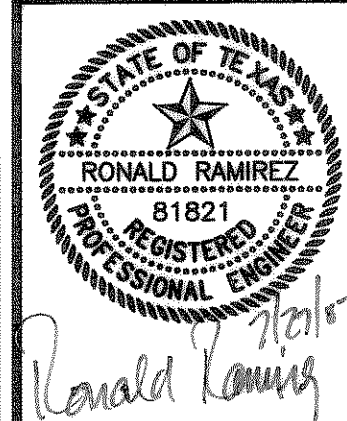
[Symbol]	4200 PSI CONCRETE PAVEMENT
[Symbol]	PROPOSED SIDEWALK
[Symbol]	PROPOSED ASPHALT PAVEMENT
[Symbol]	INTERLOCKING PAVING STONES TO BE APPROVED BY CITY
W	EXISTING WATER LINE
SS	EXISTING SANITARY SEWER LINE
[Symbol]	R.O.W. LINE
[Symbol]	LOT LINE
[Symbol]	FIRE HYDRANT
[Symbol]	STORM DRAIN INLET
[Symbol]	WATER VALVES
[Symbol]	DIRECTION OF FLOW
[Symbol]	EXISTING SIGN
[Symbol]	EXISTING OVERHEAD ELECTRIC
[Symbol]	EXISTING UNDERGROUND GAS
[Symbol]	EXISTING WATER VALVE
[Symbol]	EXISTING UNDERGROUND TELEPHONE
[Symbol]	BARRIER FREE RAMP TO BE CONST. W/PROJECT

PREPARED BY:  
**VIA WIER & ASSOCIATES, INC.**  
ENGINEERS SURVEYORS LAND PLANNERS  
4300 BELTWAY PLACE SUITE 130 ARLINGTON, TEXAS 76018 METRO (817)467-7700  
1380 U.S. HIGHWAY 287 N. SUITE 101 WAINSFIELD, TEXAS 76063 METRO (817)477-8700  
6840 ELM STREET FROSTO, TEXAS 75034 METRO (214)387-8000  
www.viawier.com

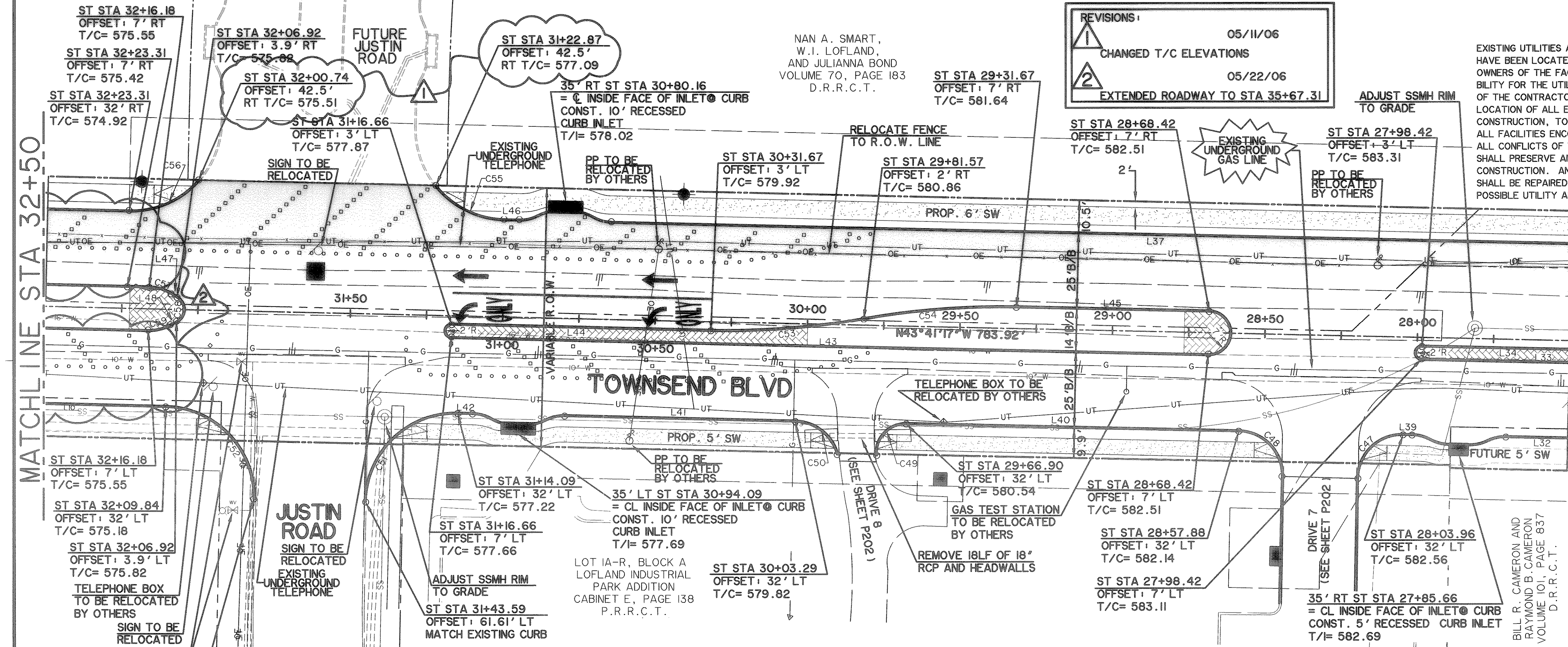


**CITY OF ROCKWALL**  
**TOWNSEND BLVD**  
**(I.B. 30 TO JUSTIN)**  
**& YELLOW JACKET LN**  
**(S.H. 205 TO TOWNSEND)**

**TOWNSEND BLVD- PAVING PLAN AND PROFILE, STA 27+50 TO 32+50**



Copyright ©  
WIER & ASSOCIATES, INC.  
LAST SHEET EDIT  
DATE 07-26-2007  
WA# 04124  
**SHEET NO. P107**



**CURVE TABLE**

CURVE	DELTA	LENGTH, FT	RADIUS, FT	TANGENT, FT	CHORD BR	CHORD, FT
C47	90°19'12"	22.86	14.50	14.58	N88°50'53"W	20.56
C48	89°41'21"	22.70	14.50	14.42	N01°09'24"E	20.45
C49	96°02'32"	15.92	9.50	10.56	S88°17'27"W	14.12
C50	73°59'12"	18.72	14.50	10.92	N06°41'41"W	17.45
C51	90°12'21"	46.44	29.50	29.61	N88°47'27"W	41.79
C52	89°52'47"	46.28	29.50	29.44	N01°15'06"E	41.68
C53	11°25'16"	50.43	253.00	25.30	S49°23'55"E	50.35

CURVE	DELTA	LENGTH, FT	RADIUS, FT	TANGENT, FT	CHORD BR	CHORD, FT
C54	11°25'16"	50.23	252.00	25.20	N49°23'55"W	50.15
C55	49°54'15"	11.00	7.00	7.00	S88°41'17"E	9.90
C56	49°54'15"	25.69	29.50	13.73	N68°38'25"W	13.73
C57	30°00'00"	7.59	14.50	3.89	N28°41'17"W	7.51
C58	120°00'00"	25.69	29.50	13.73	N18°44'09"W	24.89
C59	30°00'00"	7.59	14.50	3.89	S58°41'17"E	7.51

**LINE TABLE**

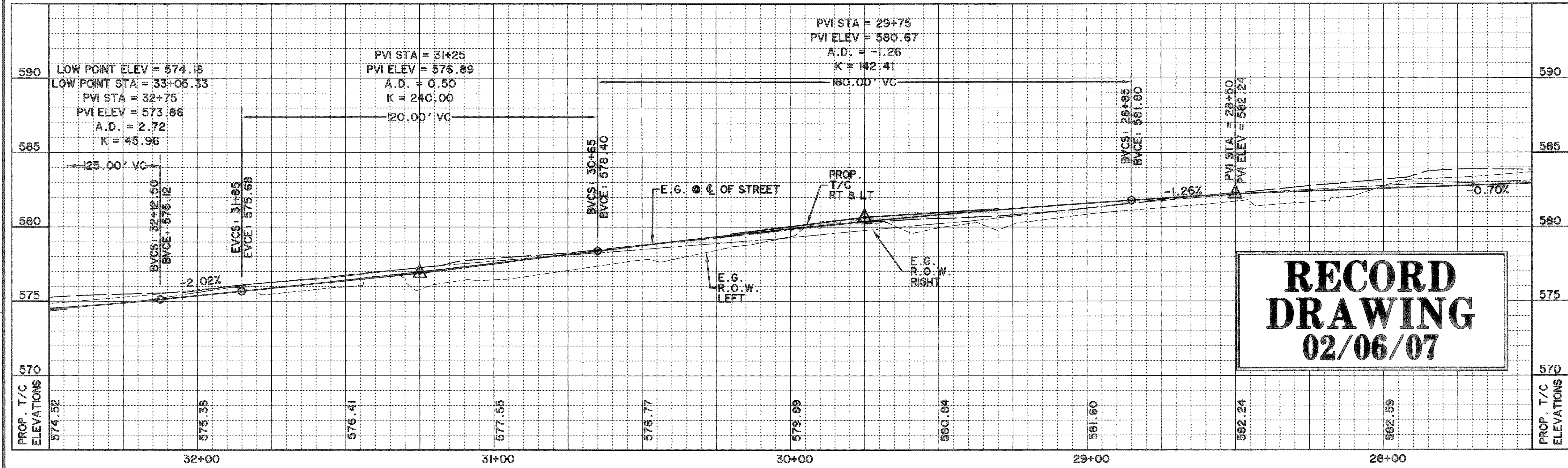
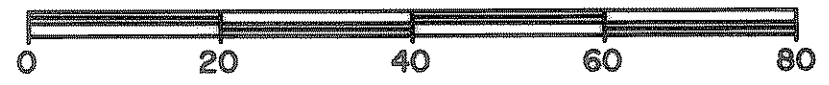
LINE	LENGTH, FT	BEARING
L32	272.11	N43°41'17"W
L33	271.90	N43°41'17"W
L34	57.50	N43°41'17"W
L37	579.72	N43°41'17"W
L39	2.93	N43°41'17"W
L40	109.03	N43°41'17"W
L41	75.68	N43°41'17"W
L42	4.90	N43°41'17"W
L43	248.24	N43°41'17"W
L44	84.99	N43°41'17"W
L45	63.25	N43°41'17"W
L46	5.04	N43°41'17"W
L47	2.32	S13°41'17"E
L48	2.32	N73°41'17"W

**NOTES**

- CONTRACTOR SHALL COORDINATE RELOCATIONS WITH FRANCHISE UTILITIES AT LEAST THREE WEEKS PRIOR TO CONSTRUCTION.
- ALL DIMENSIONS, LINES, CURVES, AND POINTS ARE TO THE BACK OF CURB UNLESS NOTED OTHERWISE.

**BENCHMARKS:**

- [Symbol] CUT IN THE EAST END OF A HEADWALL LOCATED ON THE NORTHWEST CORNER OF THE INTERSECTION OF BOYDSTUN STREET AND CLARK STREET. ELEVATION 534.21
- [Symbol] CUT IN THE SOUTHWEST CORNER OF THE HEADWALL LOCATED ON THE WEST SIDE OF INDUSTRIAL BLVD, APPROXIMATELY 250± FEET NORTH OF THE INTERSECTION OF INDUSTRIAL AND THE I-30 ACCESS ROAD. ELEVATION 544.77



**RECORD DRAWING**  
**02/06/07**

TIME: 9:26 FILE: PAVET-04124-R2.dwg