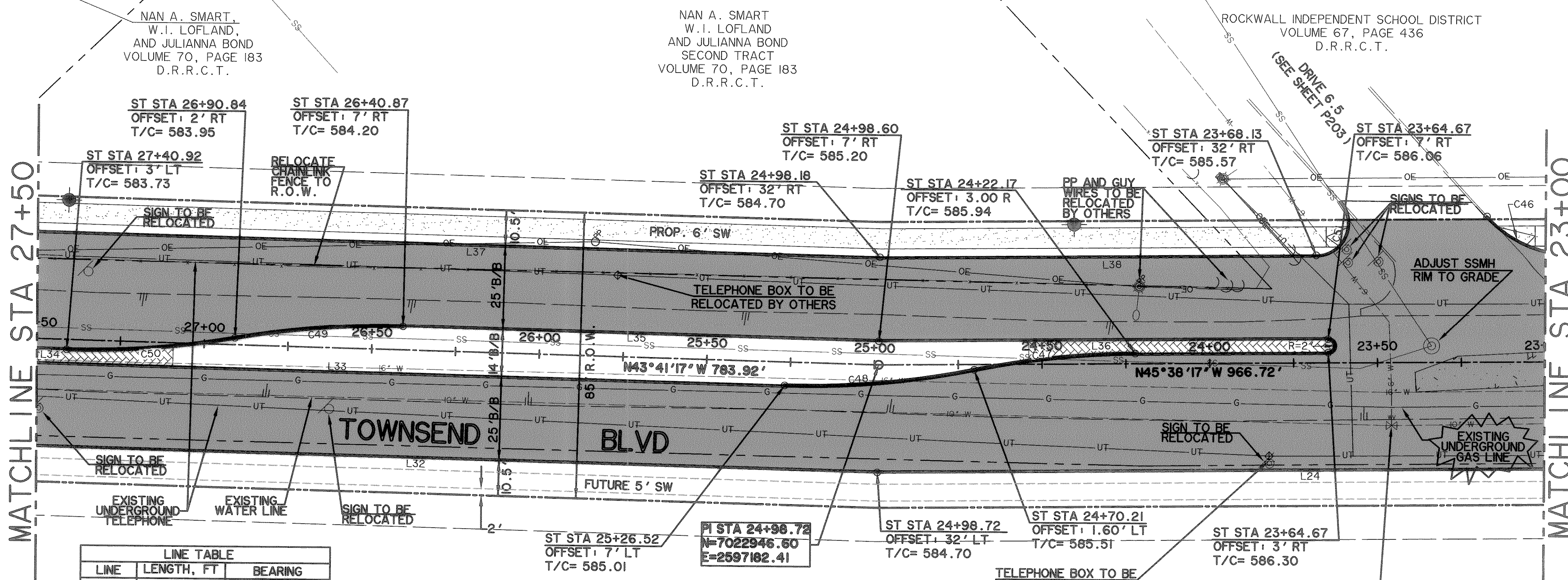


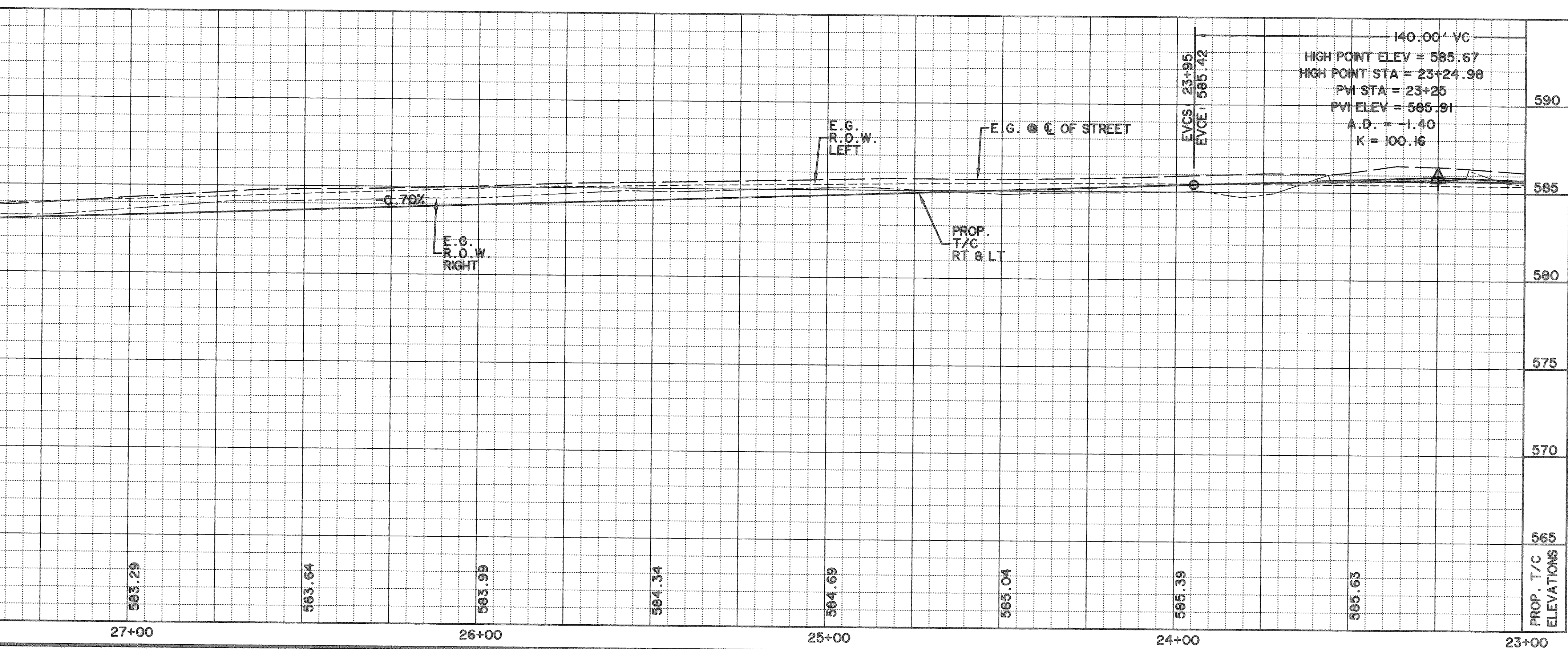
MATCHLINE STA 27+50

MATCHLINE STA 23+00



LINE	LENGTH, FT	BEARING
L24	523.15	N45°38'17" W
L32	272.11	N43°41'17" W
L33	271.90	N43°41'17" W
L34	57.50	N43°41'17" W
L35	142.03	N43°41'17" W
L36	133.93	N45°38'17" W
L37	565.79	N43°41'17" W
L38	130.05	N45°38'17" W

CURVE	DELTA	LENGTH, FT	RADIUS, FT	TANGENT, FT	CHORD BR	CHORD, FT
C46	47°51'40"	28.82	34.50	15.31	S21°42'27" E	27.99
C47	10°56'44"	48.33	253.00	24.24	N51°06'39" W	48.26
C48	12°53'45"	56.83	252.50	28.54	S50°08'09" E	56.71
C49	11°24'56"	50.31	252.50	25.24	N49°23'45" W	50.22
C50	11°24'56"	50.41	253.00	25.29	S49°23'45" E	50.32
C51	131°51'45"	21.86	9.50	21.27	N68°25'50" E	17.35

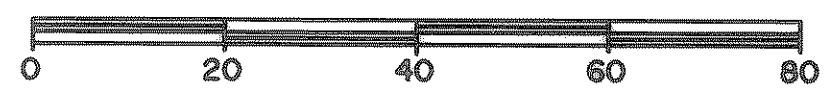


CAUTION !!!
UNDERGROUND UTILITIES

EXISTING UTILITIES AND UNDERGROUND FACILITIES INDICATED ON THESE PLANS HAVE BEEN LOCATED FROM REFERENCE INFORMATION SUPPLIED BY VARIOUS OWNERS OF THE FACILITIES. THE ENGINEER DOES NOT ACCEPT THE RESPONSIBILITY FOR THE UTILITY LOCATIONS SHOWN, IT SHALL BE THE RESPONSIBILITY OF THE CONTRACTOR TO VERIFY BOTH HORIZONTALLY AND VERTICALLY THE LOCATION OF ALL EXISTING UTILITIES AND UNDERGROUND FACILITIES PRIOR TO CONSTRUCTION, TO TAKE NECESSARY PRECAUTIONS IN ORDER TO PROTECT ALL FACILITIES ENCOUNTERED, AND TO NOTIFY THE ENGINEER PROMPTLY OF ALL CONFLICTS OF THE WORK WITH EXISTING FACILITIES. THE CONTRACTOR SHALL PRESERVE AND PROTECT ALL EXISTING UTILITIES FROM DAMAGE DURING CONSTRUCTION. ANY DAMAGE BY THE CONTRACTOR TO EXISTING UTILITIES SHALL BE REPAIRED BY THE CONTRACTOR AT HIS EXPENSE. CONTACT ALL POSSIBLE UTILITY AND UNDERGROUND FACILITY OWNERS.

- NOTES
- CONTRACTOR SHALL COORDINATE RELOCATIONS WITH FRANCHISE UTILITIES AT LEAST THREE WEEKS PRIOR TO CONSTRUCTION.
 - ALL DIMENSIONS, LINES, CURVES, AND POINTS ARE TO THE BACK OF CURB UNLESS NOTED OTHERWISE.

**RECORD
DRAWING**
02/06/07



LEGEND	
[Symbol]	4200 PSI CONCRETE PAVEMENT
[Symbol]	PROPOSED SIDEWALK
[Symbol]	PROPOSED ASPHALT PAVEMENT
[Symbol]	INTERLOCKING PAVING STONES TO BE APPROVED BY CITY
W	EXISTING WATER LINE
SS	EXISTING SANITARY SEWER LINE
---	R.O.W. LINE
---	LOT LINE
[Symbol]	FIRE HYDRANT
[Symbol]	STORM DRAIN INLET
[Symbol]	WATER VALVES
[Symbol]	DIRECTION OF FLOW
[Symbol]	EXISTING SIGN
OE	EXISTING OVERHEAD ELECTRIC
G	EXISTING UNDERGROUND GAS
X	EXISTING WATER VALVE
UT	EXISTING UNDERGROUND TELEPHONE
[Symbol]	BARRIER FREE RAMP TO BE CONST. W/PROJECT

BENCHMARKS:

"1" CUT IN THE EAST END OF THE HEADWALL LOCATED ON THE NORTHWEST CORNER OF THE INTERSECTION OF BOYDSTUN STREET AND CLARK STREET. ELEVATION 534.21

"2" CUT IN THE SOUTHWEST CORNER OF THE HEADWALL LOCATED ON THE WEST SIDE OF INDUSTRIAL BLVD, APPROXIMATELY 250± FEET NORTH OF THE INTERSECTION OF INDUSTRIAL AND THE I-30 ACCESS ROAD. ELEVATION 544.77

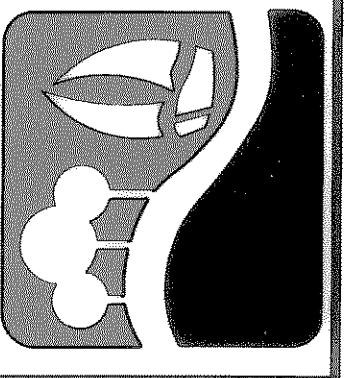
NAN A. SMART,
W.I. LOFLAND,
AND JULIANNA BOND
VOLUME 70, PAGE 183
D.R.R.C.T.

NAN A. SMART
W.I. LOFLAND
AND JULIANNA BOND
SECOND TRACT
VOLUME 70, PAGE 183
D.R.R.C.T.

ROCKWALL INDEPENDENT SCHOOL DISTRICT
VOLUME 67, PAGE 436
D.R.R.C.T.

BILL R. CAMERON AND
RAYMOND B. CAMERON
VOLUME 101, PAGE 837
D.R.R.C.T.

PREPARED BY:
VIA WIER & ASSOCIATES, INC.
ENGINEERS SURVEYORS LAND PLANNERS
4300 BELWAY PLACE SUITE 130 ARLINGTON, TEXAS 76018 METRO (817) 457-7700
1300 U.S. HIGHWAY 287 N. SUITE 101 MANSFIELD, TEXAS 76063 METRO (817) 477-8700
6840 ELLI STREET FREDCO, TEXAS 75064 METRO (214) 367-8000
www.viawier.com



CITY OF ROCKWALL
TOWNSEND BLVD
PAVING PLAN
(L.H. 30 TO JUSTIN)
& YELLOW JACKET LN
(S.H. 205 TO TOWNSEND)

TOWNSEND BLVD-
PAVING PLAN
AND PROFILE,
STA 23+00 TO 27+50

STATE OF TEXAS
REGISTERED PROFESSIONAL ENGINEER
RONALD RAMIREZ
81821
Copyright ©
VIA WIER & ASSOCIATES, INC.
LAST SHEET EDIT
DATE 07-26-2007
W.A.# 04124
SHEET NO.
P106

TIME: 01:22 FILE: PAVES-04124.dwg