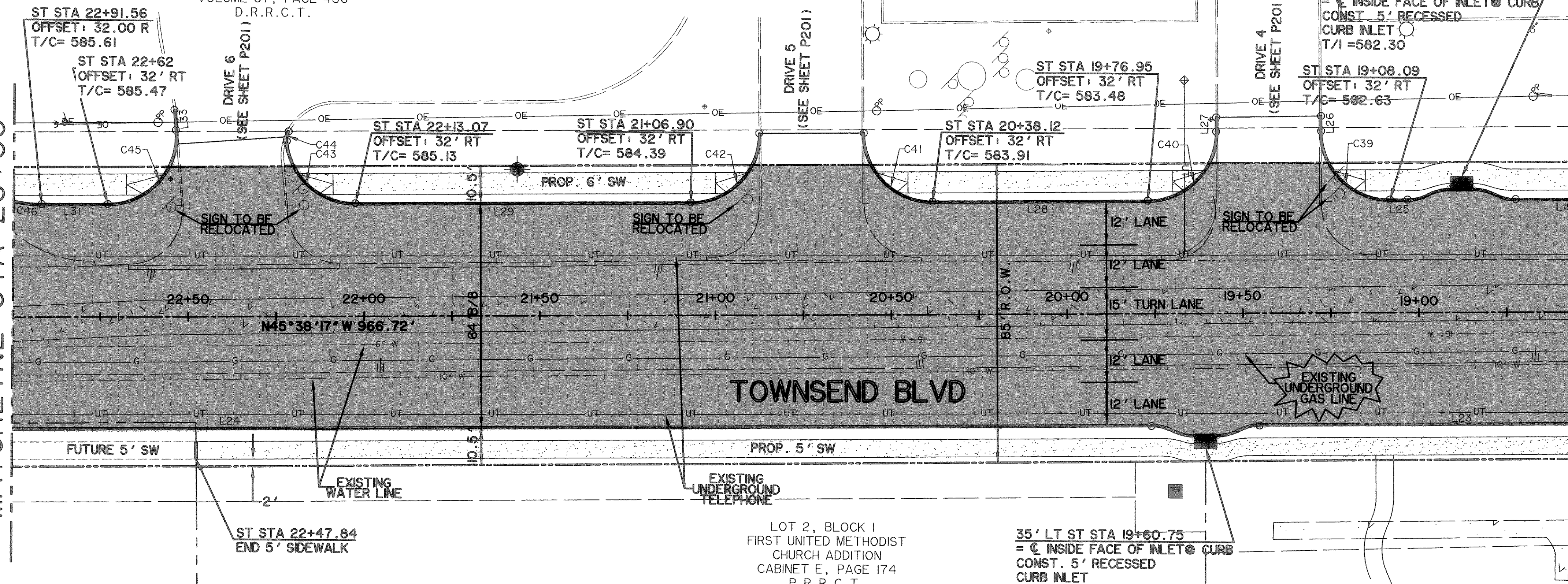


ROCKWALL INDEPENDENT SCHOOL DISTRICT
VOLUME 67, PAGE 436
D.R.R.C.T.

CAUTION !!!
UNDERGROUND UTILITIES

MATCHLINE STA 23+00

MATCHLINE STA 18+50



CURVE TABLE						
CURVE	DELTA	LENGTH, FT	RADIUS, FT	TANGENT, FT	CHORD BR	CHORD, FT
C39	89°58'00"	30.62	19.50	19.49	S00°39'17"E	27.57
C40	89°55'58"	30.61	19.50	19.48	N89°23'43"E	27.56
C41	90°01'59"	30.64	19.50	19.51	S00°37'18"E	27.59
C42	90°00'39"	30.63	19.50	19.50	N89°21'23"E	27.58
C43	84°35'38"	28.79	19.50	17.74	S03°20'29"E	26.25
C44	33°00'23"	2.88	5.00	1.48	S55°27'31"W	2.84
C45	94°08'44"	32.04	19.50	20.96	N87°17'20"E	28.56
C46	47°51'40"	28.82	34.50	15.31	S21°42'27"E	27.99

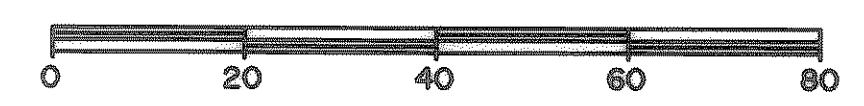
BILL R. CAMERON AND
RAYMOND B. CAMERON
VOLUME 101, PAGE 837
D.R.R.C.T.

LOT 2, BLOCK 1
FIRST UNITED METHODIST
CHURCH ADDITION
CABINET E, PAGE 174
P.R.R.C.T.

LOT 1, BLOCK 1
FIRST UNITED METHODIST
CHURCH ADDITION
CABINET E, PAGE 174
P.R.R.C.T.

- NOTES
- CONTRACTOR SHALL COORDINATE RELOCATIONS WITH FRANCHISE UTILITIES AT LEAST THREE WEEKS PRIOR TO CONSTRUCTION.
 - ALL DIMENSIONS, LINES, CURVES, AND POINTS ARE TO THE BACK OF CURB UNLESS NOTED OTHERWISE.

LINE TABLE		
LINE	LENGTH, FT	BEARING
L19	288.56	N45°38'17"W
L23	115.61	N45°38'17"W
L24	523.15	N45°38'17"W
L25	5.00	N45°38'17"W
L26	4.26	N44°19'43"E
L27	4.02	N44°25'44"E
L28	61.17	N45°38'17"W
L29	95.46	N45°38'17"W
L30	6.78	N40°12'58"E
L31	18.81	N45°38'17"W



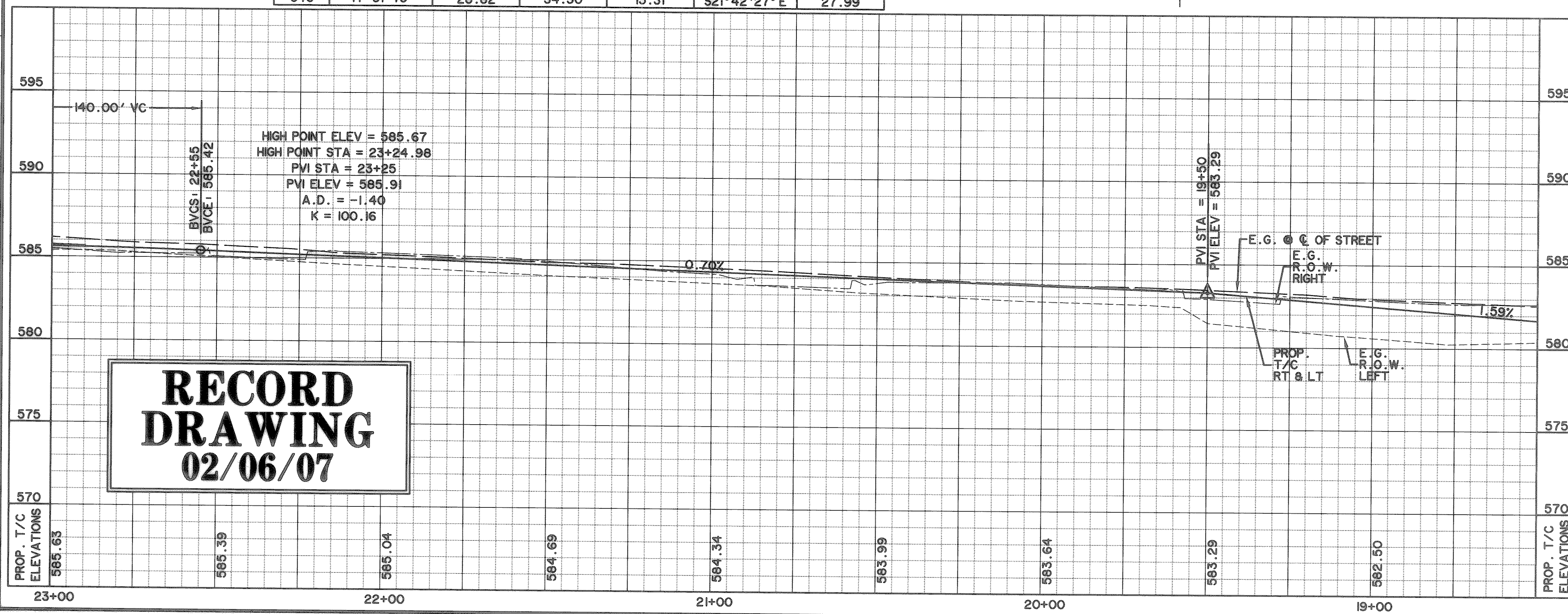
LEGEND

- 4200 PSI CONCRETE PAVEMENT
- PROPOSED SIDEWALK
- PROPOSED ASPHALT PAVEMENT
- INTERLOCKING PAVING STONES TO BE APPROVED BY CITY
- W - EXISTING WATER LINE
- SS - EXISTING SANITARY SEWER LINE
- R.O.W. LINE
- LOT LINE
- FIRE HYDRANT
- STORM DRAIN INLET
- WATER VALVES
- DIRECTION OF FLOW
- EXISTING SIGN
- OE - EXISTING OVERHEAD ELECTRIC
- G - EXISTING UNDERGROUND GAS
- X - EXISTING WATER VALVE
- UT - EXISTING UNDERGROUND TELEPHONE
- BARRIER FREE RAMP TO BE CONST. W/PROJECT

BENCHMARKS:

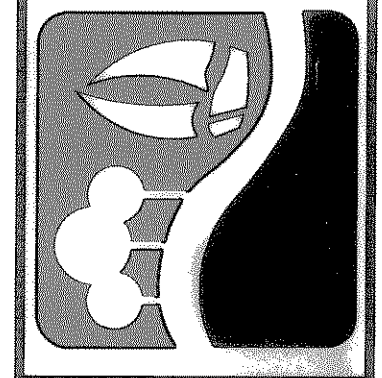
"1" CUT IN THE EAST END OF THE HEADWALL LOCATED ON THE NORTHWEST CORNER OF THE INTERSECTION OF BOYDSTUN STREET AND CLARK STREET.
ELEVATION 534.21

"2" CUT IN THE SOUTHWEST CORNER OF THE HEADWALL LOCATED ON THE WEST SIDE OF INDUSTRIAL BLVD., APPROXIMATELY 250± FEET NORTH OF THE INTERSECTION OF INDUSTRIAL AND THE I-30 ACCESS ROAD.
ELEVATION 544.77



**RECORD
DRAWING
02/06/07**

PREPARED BY:
VIA WIER & ASSOCIATES, INC.
ENGINEERS SURVEYORS LAND PLANNERS
4300 BELWAY PLACE SUITE 130 ARLINGTON, TEXAS 76018 METRO (817)467-7700
1300 U.S. HIGHWAY 287 N. SUITE 101 WAXFORD, TEXAS 76683 METRO (817)777-8700
6840 ELM STREET PRISCO, TEXAS 75084 METRO (214)387-8000
www.viawier.com



**CITY OF ROCKWALL
TOWNSEND BLVD
PAVING PLAN
(I.H. 30 TO JUSTIN)
& YELLOW JACKET LN
(S.H. 205 TO TOWNSEND)**

**TOWNSEND BLVD-
PAVING PLAN
AND PROFILE,
STA 18+50 TO 23+00**

STATE OF TEXAS
REGISTERED PROFESSIONAL ENGINEER
RONALD RAMIREZ
81821

Copyright ©
WIER & ASSOCIATES, INC.
LAST SHEET EDIT
DATE 07-26-2007
WA# 04124

**SHEET NO.
P105**

TIME: 0.14 FILE: PAVES-04124.dwg