

CURVE TABLE						
CURVE	DELTA	LENGTH, FT	RADIUS, FT	TANGENT, FT	CHORD BR	CHORD, FT
C29	89°32'07"	46.10	29.50	29.26	S00°09'10"E	41.55
C30	90°27'53"	46.58	29.50	29.74	S89°50'50"W	41.89
C31	90°15'11"	46.47	29.50	29.63	N00°30'42"W	41.81
C32	89°44'49"	46.21	29.50	29.37	N89°29'18"E	41.63
C33	11°25'16"	51.23	257.00	25.70	N51°20'56"W	51.14
C34	11°25'16"	50.43	253.00	25.30	N51°20'56"W	50.35
C35	11°25'16"	49.44	248.00	24.80	S51°20'56"E	49.35
C36	11°25'16"	50.23	252.00	25.20	S51°20'56"E	50.15
C37	90°16'26"	30.72	19.50	19.59	S89°13'30"W	27.64
C38	90°24'38"	30.77	19.50	19.64	N00°25'58"W	27.68

ROCKWALL INDEPENDENT SCHOOL DISTRICT
VOLUME 67, PAGE 436
D.R.R.C.T.

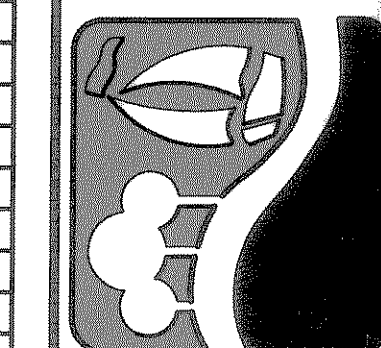
CAUTION !!!
UNDERGROUND UTILITIES

EXISTING UTILITIES AND UNDERGROUND FACILITIES INDICATED ON THESE PLANS HAVE BEEN LOCATED FROM REFERENCE INFORMATION SUPPLIED BY VARIOUS OWNERS OF THE FACILITIES. THE ENGINEER DOES NOT ACCEPT THE RESPONSIBILITY FOR THE UTILITY LOCATIONS SHOWN, IT SHALL BE THE RESPONSIBILITY OF THE CONTRACTOR TO VERIFY BOTH HORIZONTALLY AND VERTICALLY THE LOCATION OF ALL EXISTING UTILITIES AND UNDERGROUND FACILITIES PRIOR TO CONSTRUCTION, TO TAKE NECESSARY PRECAUTIONS IN ORDER TO PROTECT ALL FACILITIES ENCOUNTERED, AND TO NOTIFY THE ENGINEER PROMPTLY OF ALL CONFLICTS OF THE WORK WITH EXISTING FACILITIES. THE CONTRACTOR SHALL PRESERVE AND PROTECT ALL EXISTING UTILITIES FROM DAMAGE DURING CONSTRUCTION. ANY DAMAGE BY THE CONTRACTOR TO EXISTING UTILITIES SHALL BE REPAIRED BY THE CONTRACTOR AT HIS EXPENSE. CONTACT ALL POSSIBLE UTILITY AND UNDERGROUND FACILITY OWNERS.

- NOTES
- CONTRACTOR SHALL COORDINATE RELOCATIONS WITH FRANCHISE UTILITIES AT LEAST THREE WEEKS PRIOR TO CONSTRUCTION.
 - ALL DIMENSIONS, LINES, CURVES, AND POINTS ARE TO THE BACK OF CURB UNLESS NOTED OTHERWISE.

LINE TABLE		
LINE	LENGTH, FT	BEARING
L11	352.48	N44°55'14"W
L12	92.38	N44°55'14"W
L13	235.58	N44°55'14"W
L14	350.98	N44°55'14"W
L15	2.34	N45°38'17"W
L16	91.06	N45°38'17"W
L17	91.06	N45°38'17"W
L18	1.35	N45°38'17"W
L19	286.56	N45°38'17"W
L20	33.27	N45°38'17"W
L21	33.27	N45°38'17"W
L22	182.21	N45°38'17"W
L23	1.35	N45°38'17"W

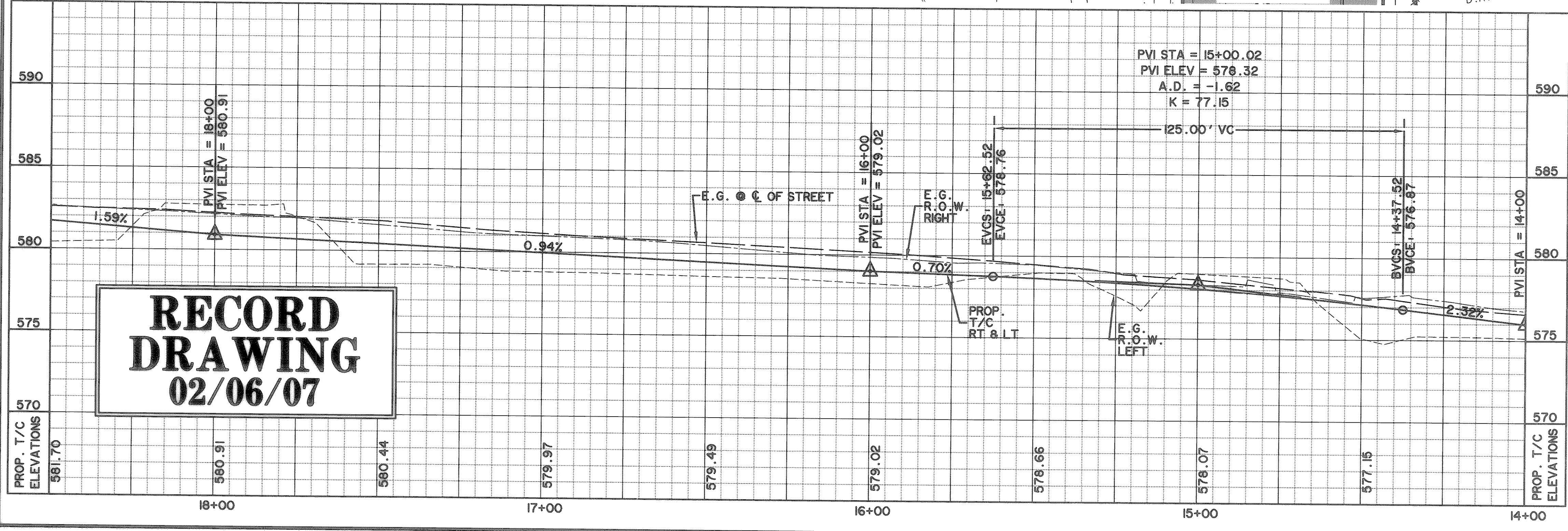
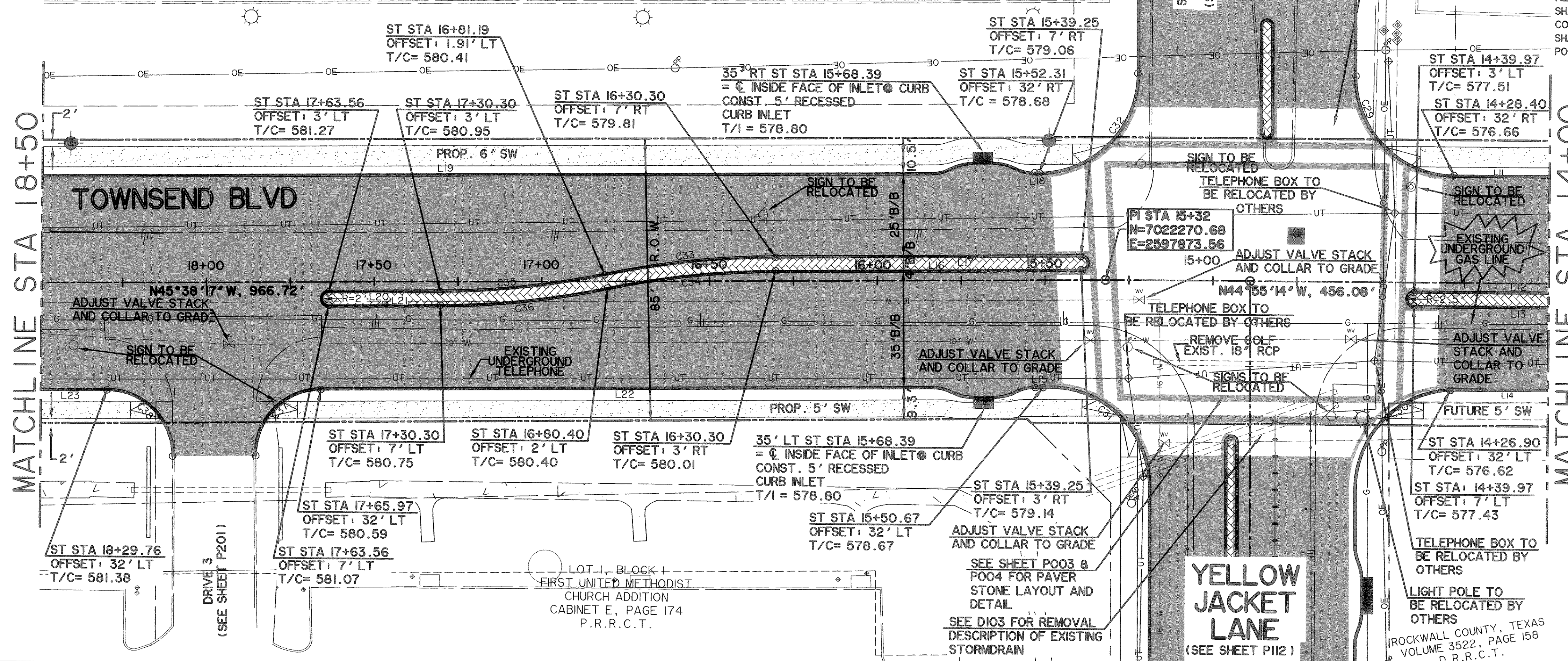
PREPARED BY:
VIA WIER & ASSOCIATES, INC.
ENGINEERS SURVEYORS LAND PLANNERS
4300 BELLEVUE PLACE SUITE 130 ARLINGTON, TEXAS 76018 METRO (817)467-7700
1300 U.S. HIGHWAY 287 N. SUITE 101 WASSILD, TEXAS 76863 METRO (817)477-0700
6840 ELI STREET FRESNO, TEXAS 75324 METRO (214)367-8000
www.viawier.com



CITY OF ROCKWALL
TOWNSEND BLVD
(I.H. 30 TO JUSTIN)
& YELLOW JACKET LN
(S.H. 205 TO TOWNSEND)

TOWNSEND BLVD-
PAVING PLAN
AND PROFILE,
STA 14+00 TO 18+50

STATE OF TEXAS
RONALD RAMIREZ
81821
REGISTERED
PROFESSIONAL ENGINEER
Copyright ©
WIER & ASSOCIATES, INC.
LAST SHEET EDIT
DATE 07-26-2007
WA# 04124
SHEET NO.
P104



LEGEND	
	4200 PSI CONCRETE PAVEMENT
	PROPOSED SIDEWALK
	PROPOSED ASPHALT PAVEMENT
	INTERLOCKING PAVING STONES TO BE APPROVED BY CITY
	EXISTING WATER LINE
	EXISTING SANITARY SEWER LINE
	R.O.W. LINE
	LOT LINE
	FIRE HYDRANT
	STORM DRAIN INLET
	WATER VALVES
	DIRECTION OF FLOW
	EXISTING SIGN
	EXISTING OVERHEAD ELECTRIC
	EXISTING UNDERGROUND GAS
	EXISTING WATER VALVE
	EXISTING UNDERGROUND TELEPHONE
	BARRIER FREE RAMP TO BE CONST. W/PROJECT

BENCHMARKS:
"□" CUT IN THE EAST END OF THE HEADWALL LOCATED ON THE NORTHWEST CORNER OF THE INTERSECTION OF BOYDSTUN STREET AND CLARK STREET. ELEVATION 534.21
"□" CUT IN THE SOUTHWEST CORNER OF THE HEADWALL LOCATED ON THE WEST SIDE OF INDUSTRIAL BLVD., APPROXIMATELY 250± FEET NORTH OF THE INTERSECTION OF INDUSTRIAL AND THE I-30 ACCESS ROAD. ELEVATION 544.77

TIME 9:12 FILE: PAVE4-04124.dwg