

LINE	LENGTH, FT	BEARING
L1	3.75	S39°02'11"W
L2	346.12	N66°56'06"W
L3	351.73	N66°56'06"W
L4	346.70	N66°56'06"W
L5	32.87	N66°56'06"W

INDEPENDENT SCHOOL DISTRICT
VOLUME 67, PAGE 436
D.R.R.C.T.

LOT I, BLOCK A
ELLIS CENTRE
CABINET B, PAGE 101
P.R.R.C.T.

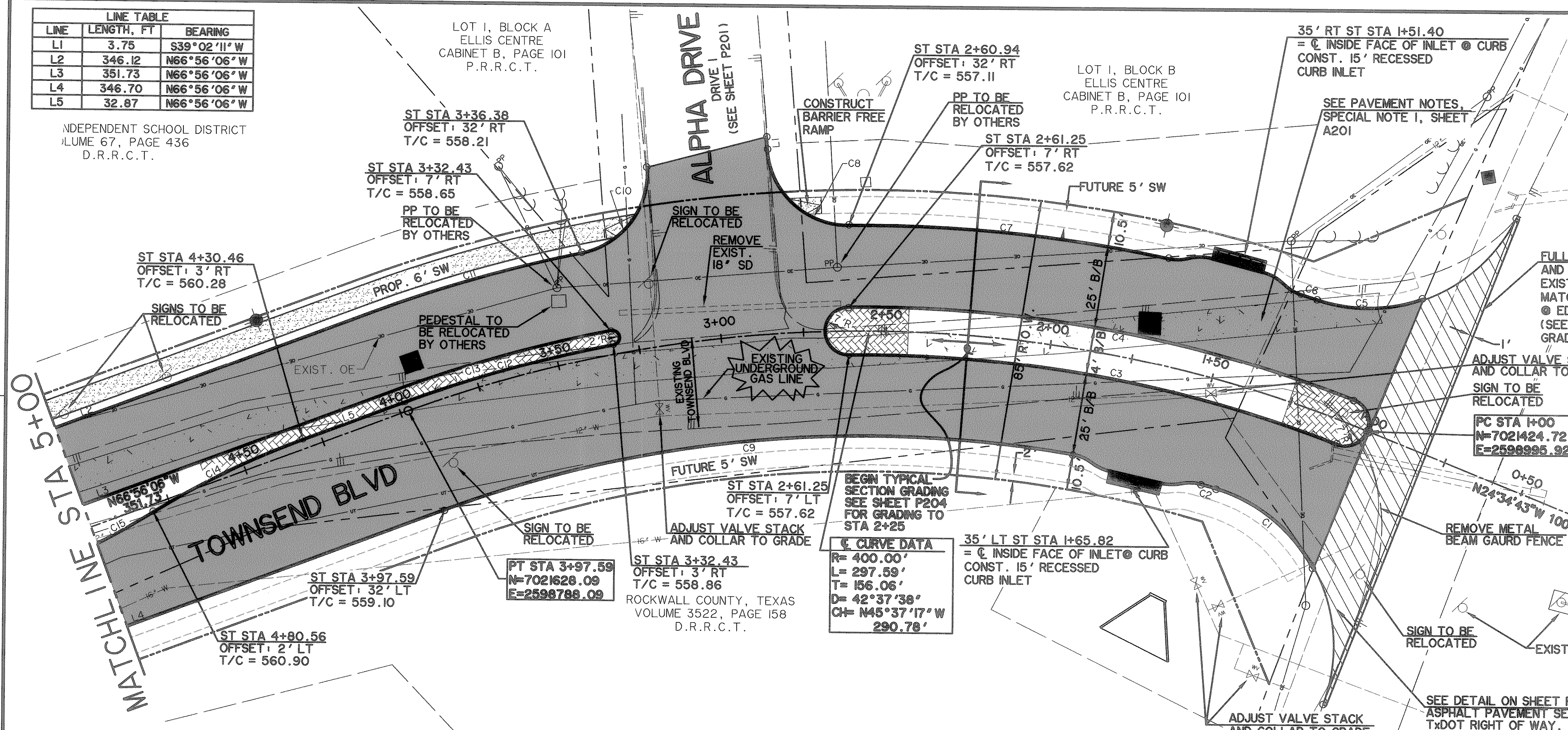
LOT I, BLOCK B
ELLIS CENTRE
CABINET B, PAGE 101
P.R.R.C.T.

CAUTION !!!
UNDERGROUND UTILITIES

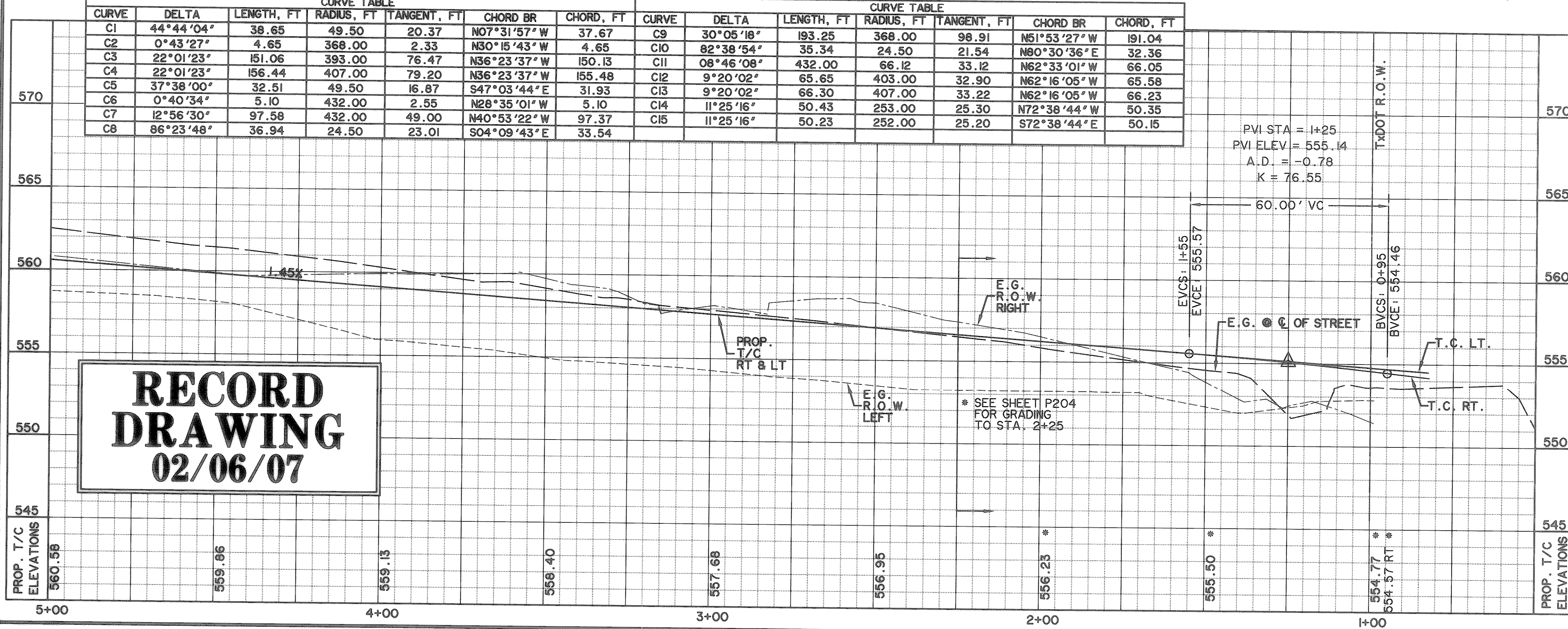
EXISTING UTILITIES AND UNDERGROUND FACILITIES INDICATED ON THESE PLANS HAVE BEEN LOCATED FROM REFERENCE INFORMATION SUPPLIED BY VARIOUS OWNERS OF THE FACILITIES. THE ENGINEER DOES NOT ACCEPT THE RESPONSIBILITY FOR THE UTILITY LOCATIONS SHOWN, IT SHALL BE THE RESPONSIBILITY OF THE CONTRACTOR TO VERIFY BOTH HORIZONTALLY AND VERTICALLY THE LOCATION OF ALL EXISTING UTILITIES AND UNDERGROUND FACILITIES PRIOR TO CONSTRUCTION, TO TAKE NECESSARY PRECAUTIONS IN ORDER TO PROTECT ALL FACILITIES ENCOUNTERED, AND TO NOTIFY THE ENGINEER PROMPTLY OF ALL CONFLICTS OF THE WORK WITH EXISTING FACILITIES. THE CONTRACTOR SHALL PRESERVE AND PROTECT ALL EXISTING UTILITIES FROM DAMAGE DURING CONSTRUCTION. ANY DAMAGE BY THE CONTRACTOR TO EXISTING UTILITIES SHALL BE REPAIRED BY THE CONTRACTOR AT HIS EXPENSE. CONTACT ALL POSSIBLE UTILITY AND UNDERGROUND FACILITY OWNERS.

NOTES

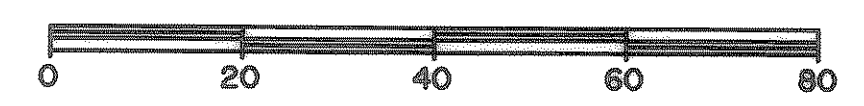
- CONTRACTOR SHALL COORDINATE RELOCATIONS WITH FRANCHISE UTILITIES AT LEAST THREE WEEKS PRIOR TO CONSTRUCTION.
- ALL DIMENSIONS, LINES, CURVES, AND POINTS ARE TO THE BACK OF CURB UNLESS NOTED OTHERWISE.



CURVE TABLE						CURVE TABLE							
CURVE	DELTA	LENGTH, FT	RADIUS, FT	TANGENT, FT	CHORD BR	CHORD, FT	CURVE	DELTA	LENGTH, FT	RADIUS, FT	TANGENT, FT	CHORD BR	CHORD, FT
C1	44°44'04"	38.65	49.50	20.37	N07°31'57"W	37.67	C9	30°05'18"	193.25	368.00	98.91	N51°53'27"W	191.04
C2	0°43'27"	4.65	368.00	2.33	N30°15'43"W	4.65	C10	82°38'54"	35.34	24.50	21.54	N80°30'36"E	32.36
C3	22°01'23"	151.06	393.00	76.47	N36°23'37"W	150.13	C11	08°46'08"	432.00	66.12	33.12	N62°33'01"W	66.05
C4	22°01'23"	156.44	407.00	79.20	N36°23'37"W	155.48	C12	9°20'02"	65.65	403.00	32.90	N62°16'05"W	65.58
C5	37°38'00"	32.51	49.50	16.87	S47°03'44"E	31.93	C13	9°20'02"	66.30	407.00	33.22	N62°16'05"W	66.23
C6	0°40'34"	5.10	432.00	2.55	N28°35'01"W	5.10	C14	11°25'16"	50.43	253.00	25.30	N72°38'44"W	50.35
C7	12°56'30"	97.58	432.00	49.00	N40°53'22"E	97.37	C15	11°25'16"	50.23	252.00	25.20	S72°38'44"E	50.15
C8	86°23'48"	36.94	24.50	23.01	S04°09'43"E	33.54							



RECORD DRAWING
02/06/07

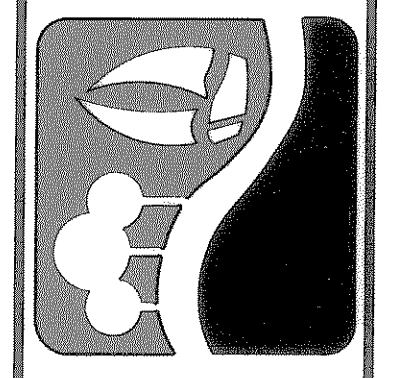


LEGEND

- 4200 PSI CONCRETE PAVEMENT
- PROPOSED SIDEWALK
- PROPOSED ASPHALT PAVEMENT
- INTERLOCKING PAVING STONES TO BE APPROVED BY CITY
- W - EXISTING WATER LINE
- SS - EXISTING SANITARY SEWER LINE
- R.O.W. LINE
- LOT LINE
- FIRE HYDRANT
- STORM DRAIN INLET
- WATER VALVES
- DIRECTION OF FLOW
- EXISTING SIGN
- OE - EXISTING OVERHEAD ELECTRIC
- G - EXISTING UNDERGROUND GAS
- W - EXISTING WATER VALVE
- UT - EXISTING UNDERGROUND TELEPHONE
- BARRIER FREE RAMP TO BE CONST. W/PROJECT

BENCHMARKS:
 "C" CUT IN THE EAST END OF THE HEADWALL LOCATED ON THE NORTHWEST CORNER OF THE INTERSECTION OF BOYDSTUN STREET AND CLARK STREET. ELEVATION 534.21
 "C" CUT IN THE SOUTHWEST CORNER OF THE HEADWALL LOCATED ON THE WEST SIDE OF INDUSTRIAL BLVD, APPROXIMATELY 250+ FEET NORTH OF THE INTERSECTION OF INDUSTRIAL AND THE I-30 ACCESS ROAD. ELEVATION 544.77

PREPARED BY:
VIA WIER & ASSOCIATES, INC.
ENGINEERS SURVEYORS LAND PLANNERS
4300 BELWAY PLACE SUITE 130 ARLINGTON, TEXAS 76018 METRO (817)467-7700
1300 U.S. HIGHWAY 207 N. SUITE 101 WANSBLED, TEXAS 76783 METRO (817)477-9700
6840 ELM STREET FRENCO, TEXAS 75004 METRO (214)367-8000
www.viawier.com



CITY OF ROCKWALL
TOWNSEND BLVD
PAVING PLAN
(I.H. 30 TO JUSTIN)
& YELLOW JACKET LN
(S.H. 205 TO TOWNSEND)

TOWNSEND BLVD-
PAVING PLAN
AND PROFILE,
STA 0+00 TO 5+00

STATE OF TEXAS
SEAL OF THE PROFESSIONAL ENGINEER
RONALD RAMIREZ
81821
REGISTERED PROFESSIONAL ENGINEER
Copyright ©
VIA WIER & ASSOCIATES, INC.
LAST SHEET EDIT
DATE 07-26-2007
WA# 04124
SHEET NO.
P101

TIME: 8:53 FILE: PAVEI-04124.dwg