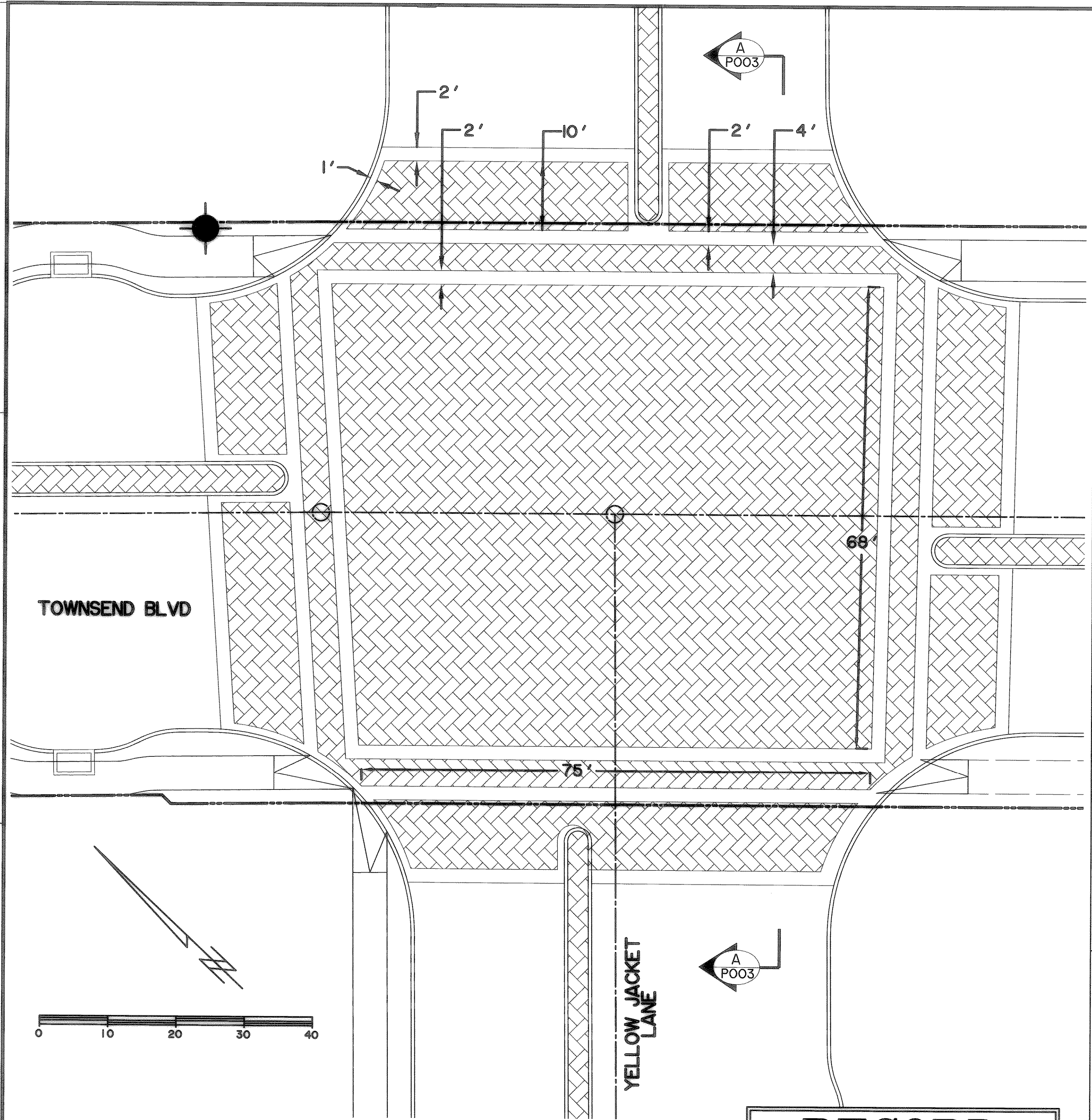


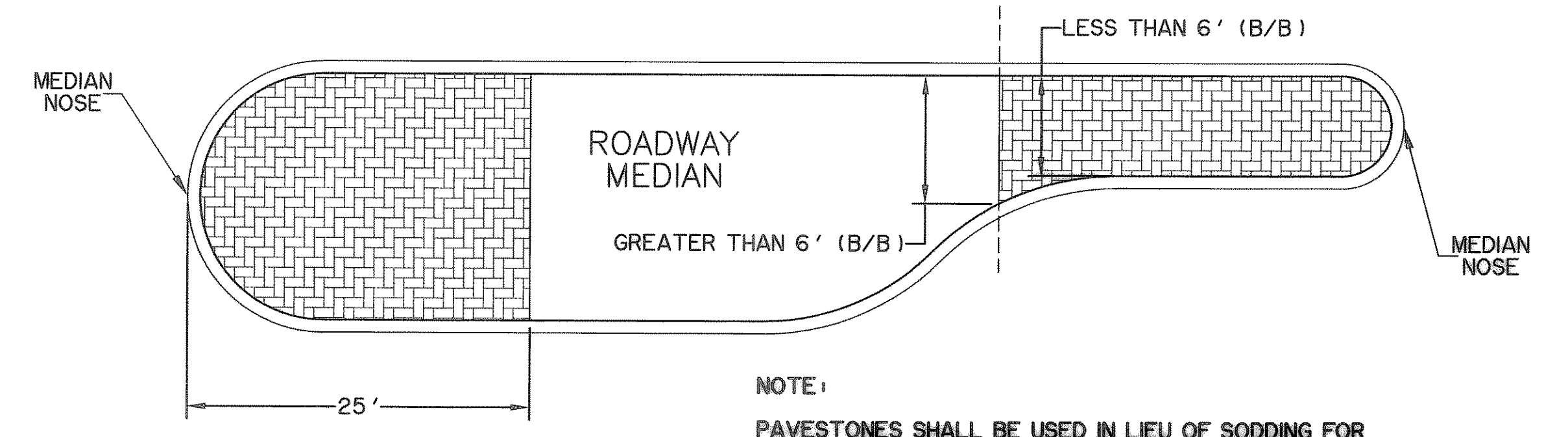
TIME: 18:37 FILE: PAVE-Details-04124-RI.dwg



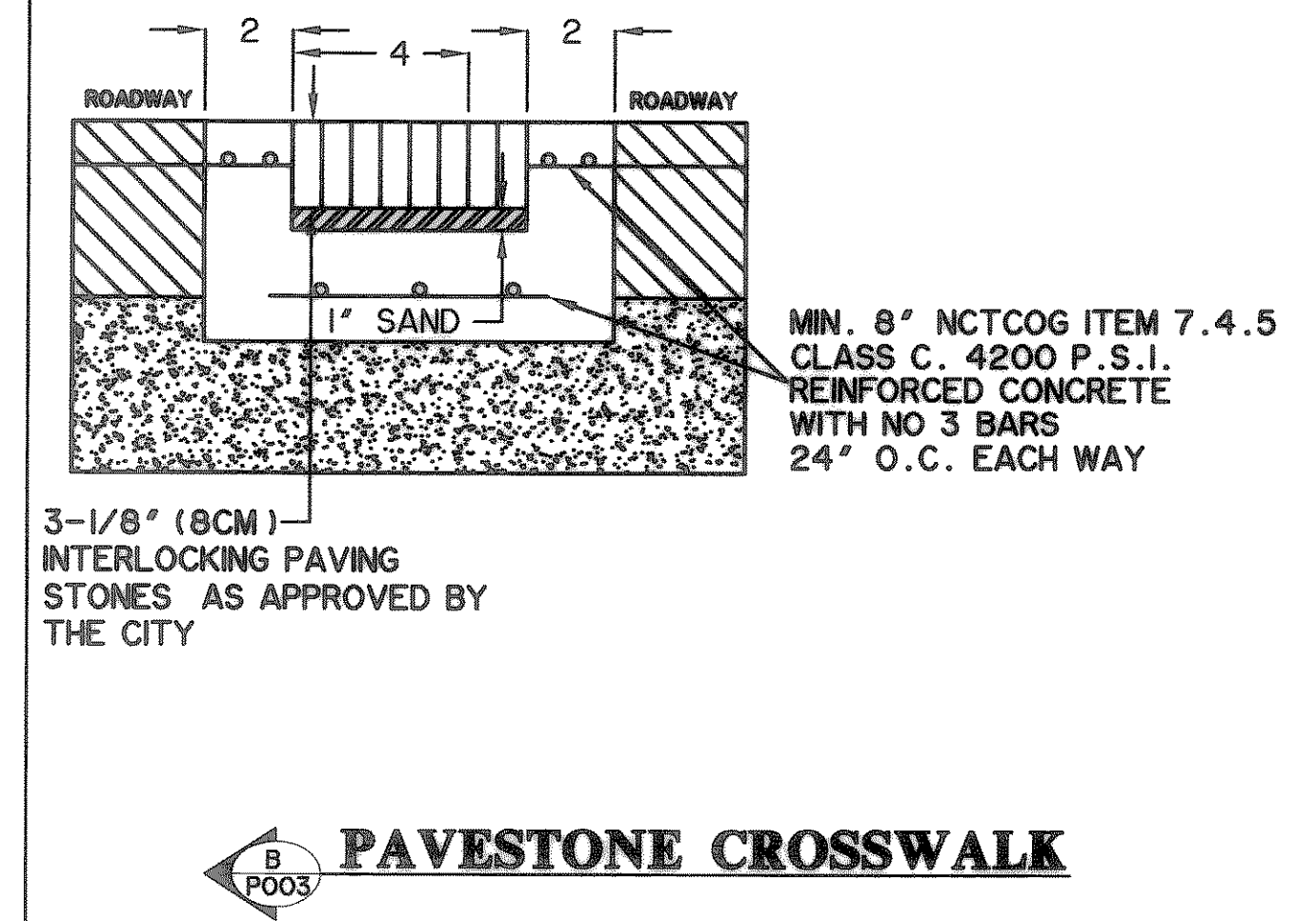
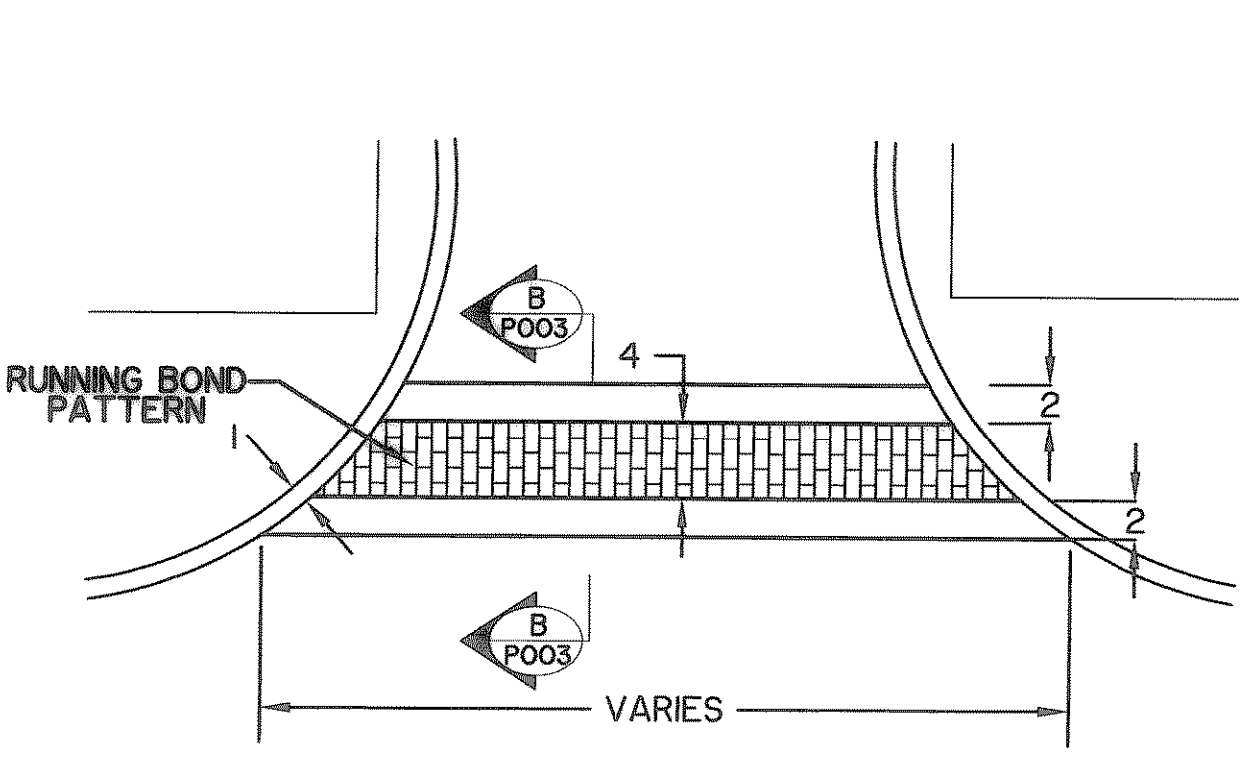
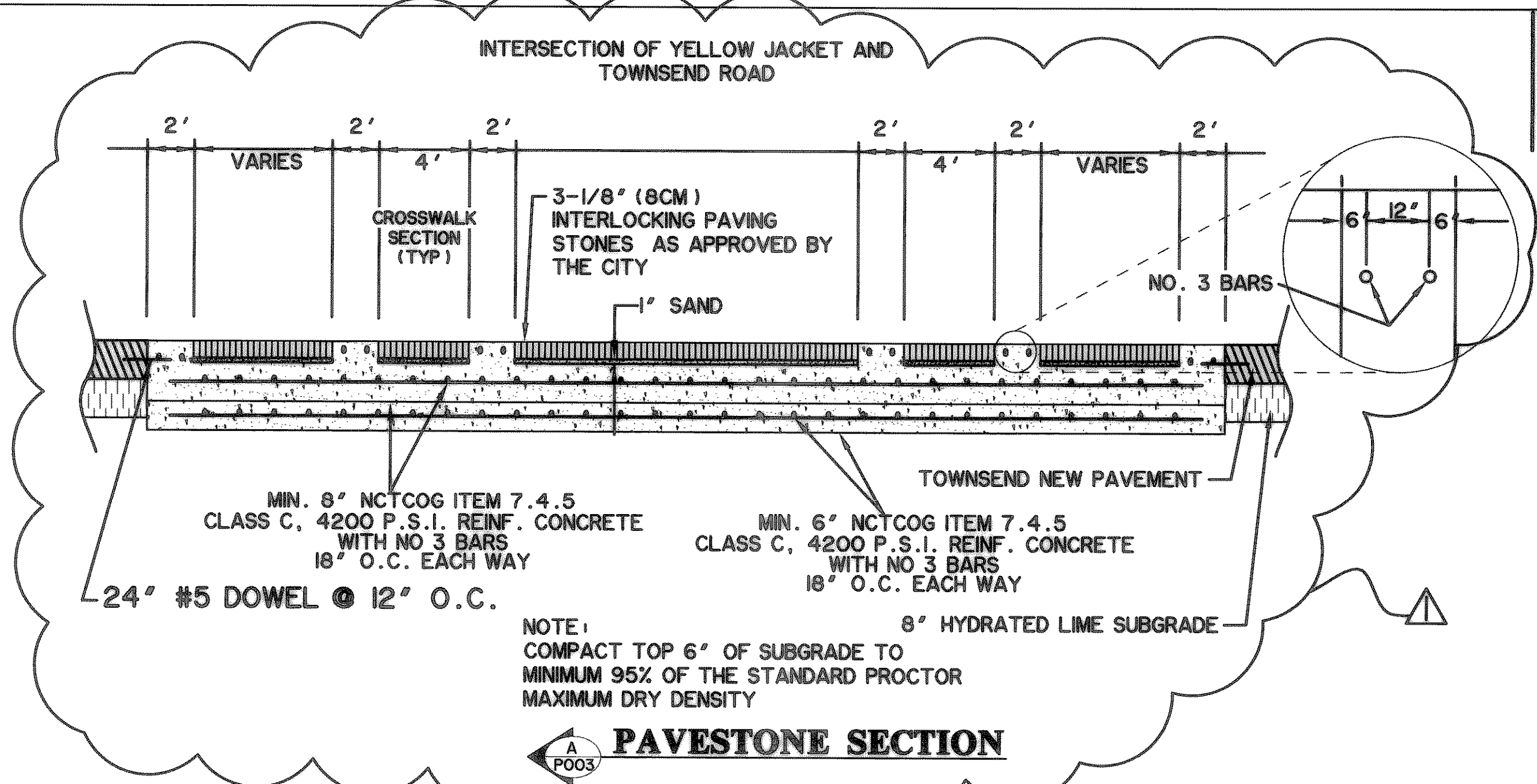
**RECORD
DRAWING
02/06/07**

**TOWNSEND & YELLOW JACKET INTERSECTION
PAVER DETAILS**
N.T.S.

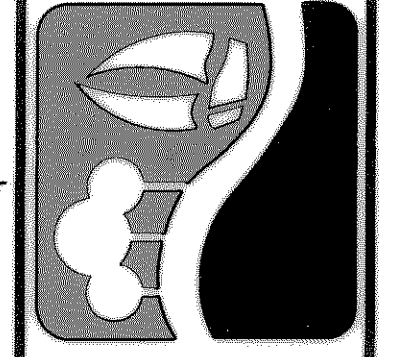
REVISIONS:	05/08/06
▲ CHANGED PAVESTONE DETAIL TO REPLACE FLEXBASE SUBGRADE TO 6" CONCRETE.	



LAYOUT FOR PAVER STONES IN MEDIAN
SCALE: NTS



PREPARED BY:
WIER & ASSOCIATES, INC.
ENGINEERS SURVEYORS LAND PLANNERS
4300 BELWAY PLACE SUITE 130 ARLINGTON, TEXAS 76018 METRO (817)467-7700
1380 U.S. HIGHWAY 87 N. SUITE 101 MANSFIELD, TEXAS 76063 METRO (817)477-6700
8849 ELM STREET IRVING, TEXAS 75034 METRO (214)387-8000
www.wierassociates.com



**CITY OF ROCKWALL
TOWNSEND BLVD
(L.H. 30 TO JUSTIN)
& YELLOW JACKET LN
(S.H. 205 TO TOWNSEND)**

PAVER DETAILS

STATE OF TEXAS
RONALD RAMIREZ
REGISTERED PROFESSIONAL ENGINEER
81821
2/20/07
COPYRIGHT © WIER & ASSOCIATES, INC.
LAST SHEET EDIT
DATE: 07-26-2007
WAR 04124
SHEET NO. P003