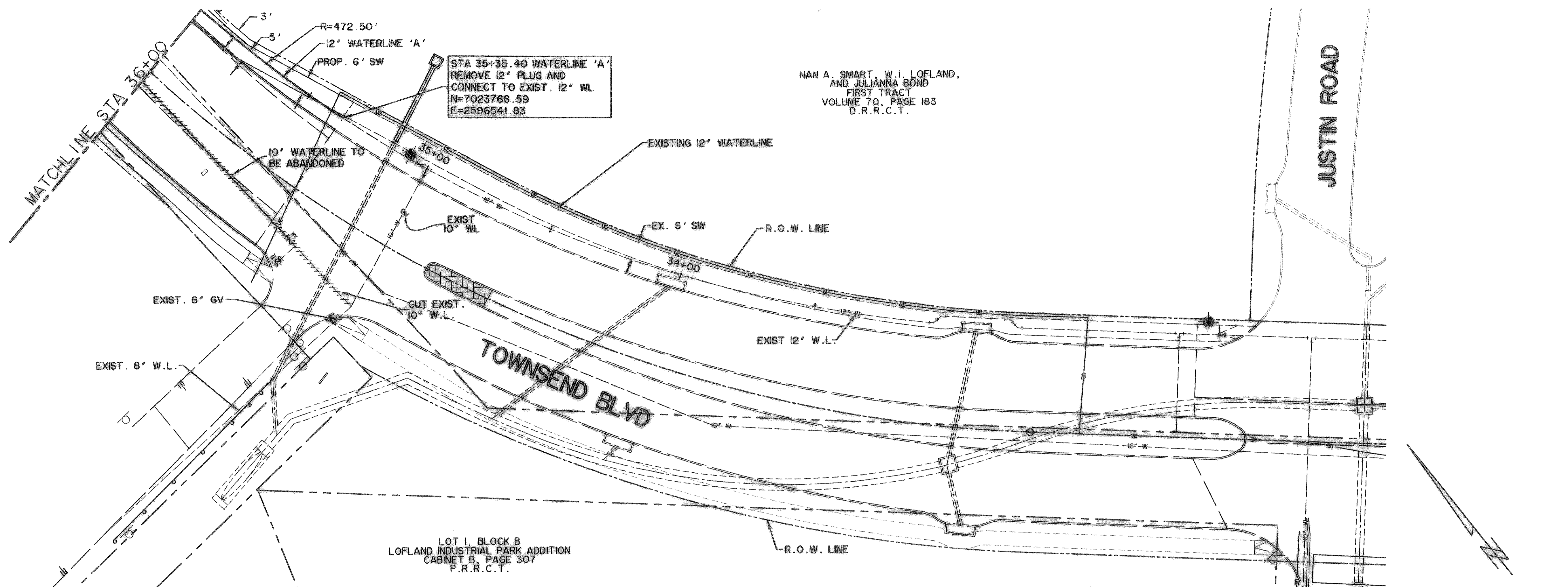


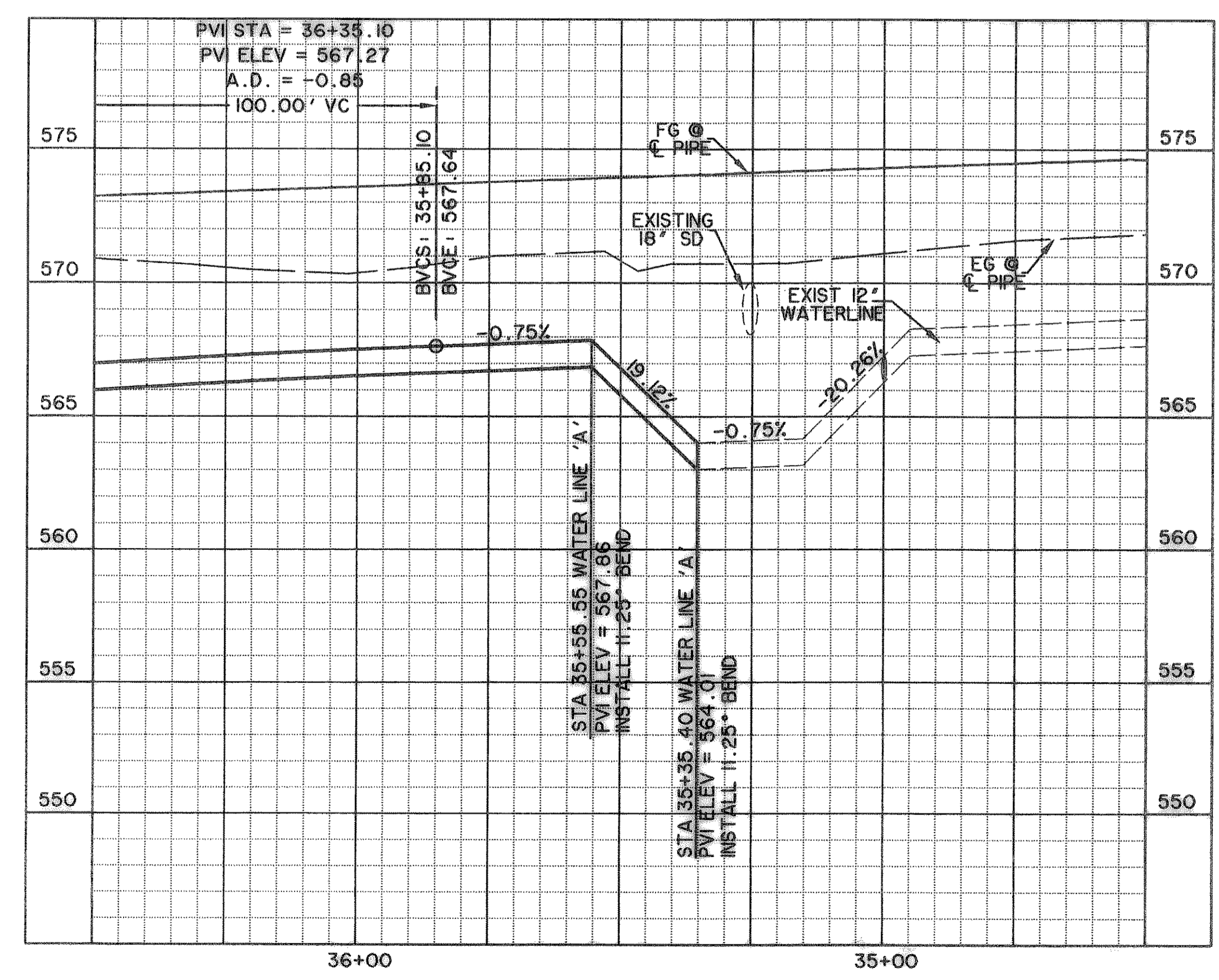
TIME: 09:18 FILE: WATER-1-PH-04124.dwg



NAN A. SMART, W.I. LOFLAND,
AND JULIANNA BOND
FIRST TRACT
VOLUME 70, PAGE 183
D.R.R.C.T.

STA 35+35.40 WATERLINE 'A'
REMOVE 12" PLUG AND
CONNECT TO EXIST. 12" WL
N=7023768.59
E=2596541.83

WATERLINE 'A'



**CAUTION !!!
UNDERGROUND UTILITIES**

EXISTING UTILITIES AND UNDERGROUND FACILITIES INDICATED ON THESE PLANS HAVE BEEN LOCATED FROM REFERENCE INFORMATION SUPPLIED BY VARIOUS OWNERS OF THE FACILITIES. THE ENGINEER DOES NOT ACCEPT THE RESPONSIBILITY FOR THE UTILITY LOCATIONS SHOWN. IT SHALL BE THE RESPONSIBILITY OF THE CONTRACTOR TO VERIFY BOTH HORIZONTALLY AND VERTICALLY THE LOCATION OF ALL EXISTING UTILITIES AND UNDERGROUND FACILITIES PRIOR TO CONSTRUCTION, TO TAKE NECESSARY PRECAUTIONS IN ORDER TO PROTECT ALL FACILITIES ENCOUNTERED, AND TO NOTIFY THE ENGINEER PROMPTLY OF ALL CONFLICTS OF THE WORK WITH EXISTING FACILITIES. THE CONTRACTOR SHALL PRESERVE AND PROTECT ALL EXISTING UTILITIES FROM DAMAGE DURING CONSTRUCTION. ANY DAMAGE BY THE CONTRACTOR TO EXISTING UTILITIES SHALL BE REPAIRED BY THE CONTRACTOR AT HIS EXPENSE.

- NOTES:**
- CONTRACTOR SHALL COORDINATE RELOCATIONS WITH FRANCHISE UTILITIES AT LEAST THREE WEEKS PRIOR TO CONSTRUCTION. CONTRACTOR SHALL FIELD VERIFY UTILITY LOCATIONS AND ELEVATIONS AT CROSSINGS PRIOR TO CONSTRUCTION.
 - CONTRACTOR SHALL ADJUST EXISTING WATER LINES TO PROVIDE A MINIMUM 2' CLEARANCE AT ALL STORM DRAIN CROSSINGS.

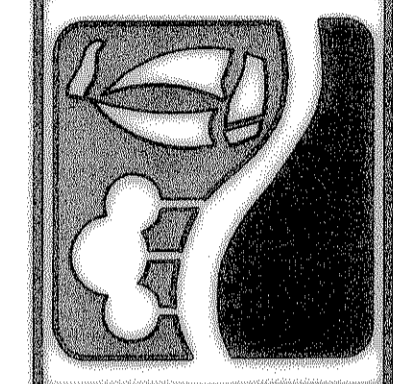
- BENCHMARKS:**
- CUT IN THE EAST END OF THE HEADWALL LOCATED ON THE NORTHWEST CORNER OF THE INTERSECTION OF BOYDSTUN STREET AND CLARK STREET. ELEVATION 534.21
 - CUT IN THE SOUTHWEST CORNER OF THE HEADWALL LOCATED ON THE WEST SIDE OF INDUSTRIAL BLVD, APPROXIMATELY 250± FEET NORTH OF THE INTERSECTION OF INDUSTRIAL AND THE I-30 ACCESS ROAD. ELEVATION 544.77

LEGEND

—W—	PROPOSED WATER LINE
—SS—	PROPOSED SS LINE
—GV—	PROPOSED GATE VALVE
—FH—	PROPOSED FIRE HYDRANT
- - -	EXISTING WATER LINE
- - -	EXISTING SS LINE
—GV—	EXISTING GATE VALVE
—MH—	EXISTING MANHOLE
—FH—	EXISTING FIRE HYDRANT

**RECORD
DRAWING
01/16/09**

PREPARED BY:
WIA WIER & ASSOCIATES, INC.
ENGINEERS SURVEYORS LAND PLANNERS
701 HIGHLANDER BLVD., SUITE 300 ARLINGTON, TEXAS 76015 METRO (817)467-7700
6849 ELM STREET FRISCO, TEXAS 75034 METRO (214)387-8000
www.WierAssociates.com



**CITY OF ROCKWALL
TOWNSEND BLVD
(JUSTIN RD TO BOYDSTUN ST)
& BOYDSTUN ST
(TOWNSEND BLVD TO CLARK ST)**

**TOWNSEND BLVD
WATER LINE 'A'
STA 31+50 TO STA 36+00**

STATE OF TEXAS
RONALD KAMRIZ
61821
REGISTERED
PROFESSIONAL ENGINEER
Ronald Kamrizing
COPYRIGHT ©
WIER & ASSOCIATES, INC.
LAST SHEET EDIT
DATE 01-08-2009
WA# 04124
**SHEET NO.
U103**