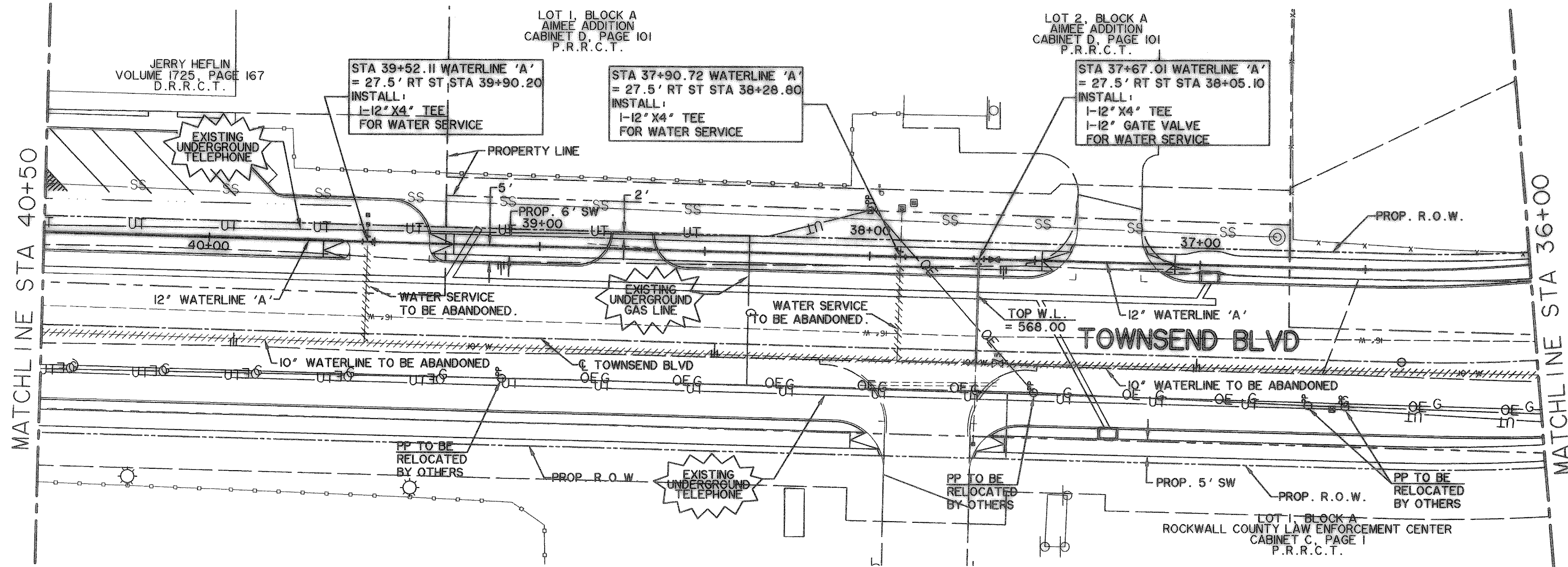
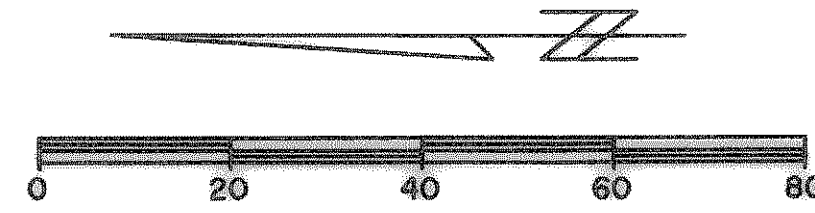


TIME: 9:17 FILE: WATER-2-PH-04124.dwg



NOTES:
 1. CONTRACTOR SHALL COORDINATE RELOCATIONS WITH FRANCHISE UTILITIES AT LEAST THREE WEEKS PRIOR TO CONSTRUCTION. CONTRACTOR SHALL FIELD VERIFY UTILITY LOCATIONS AND ELEVATIONS AT CROSSINGS PRIOR TO CONSTRUCTION.
 2. CONTRACTOR SHALL ADJUST EXISTING WATER LINES TO PROVIDE A MINIMUM 2' CLEARANCE AT ALL STORM DRAIN CROSSINGS.

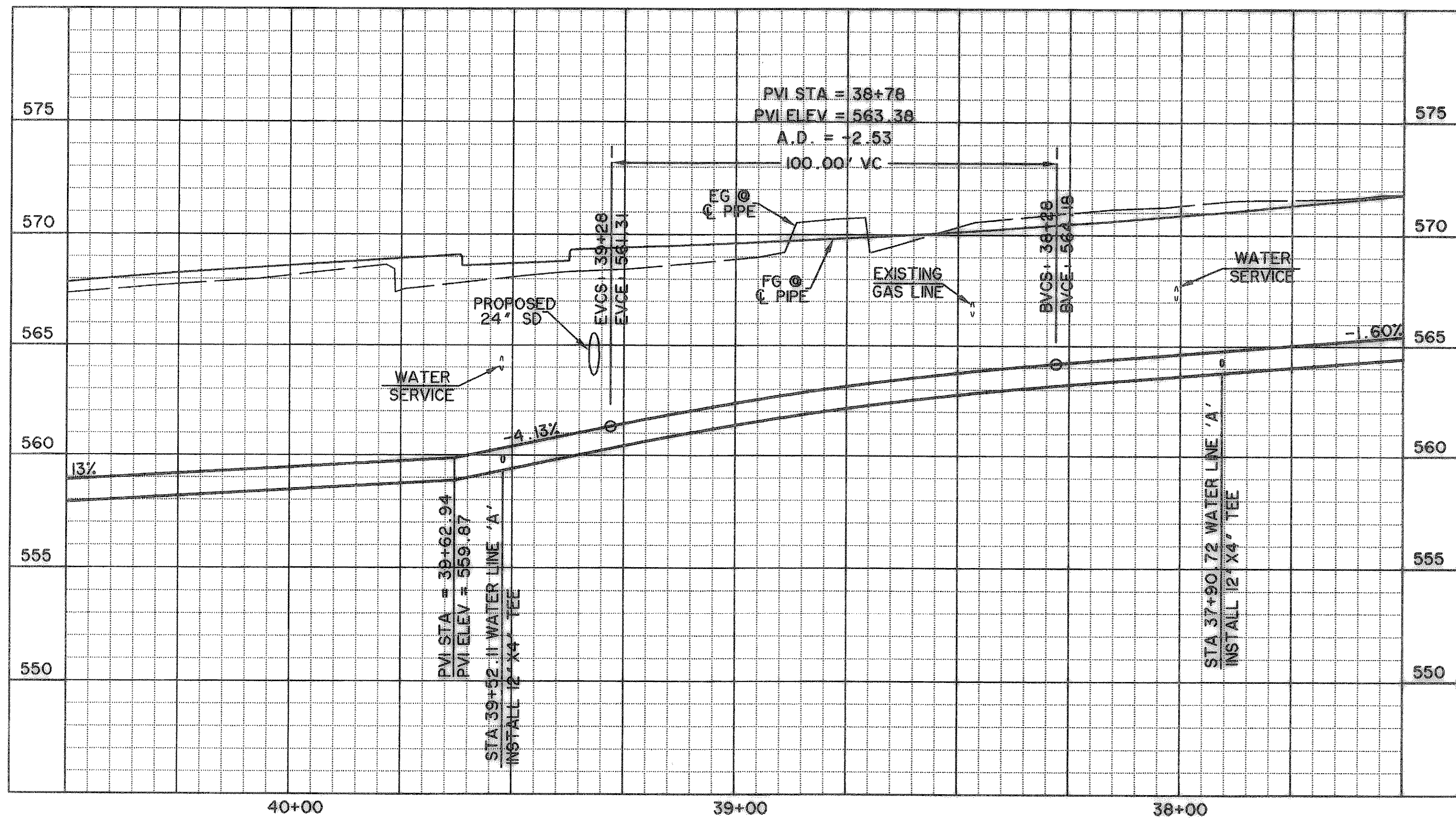


CAUTION !!!
 UNDERGROUND UTILITIES

EXISTING UTILITIES AND UNDERGROUND FACILITIES INDICATED ON THESE PLANS HAVE BEEN LOCATED FROM REFERENCE INFORMATION SUPPLIED BY VARIOUS OWNERS OF THE FACILITIES. THE ENGINEER DOES NOT ACCEPT THE RESPONSIBILITY FOR THE UTILITY LOCATIONS SHOWN, IT SHALL BE THE RESPONSIBILITY OF THE CONTRACTOR TO VERIFY BOTH HORIZONTALLY AND VERTICALLY THE LOCATION OF ALL EXISTING UTILITIES AND UNDERGROUND FACILITIES PRIOR TO CONSTRUCTION, TO TAKE NECESSARY PRECAUTIONS IN ORDER TO PROTECT ALL FACILITIES ENCOUNTERED, AND TO NOTIFY THE ENGINEER PROMPTLY OF ALL CONFLICTS OF THE WORK WITH EXISTING FACILITIES. THE CONTRACTOR SHALL PRESERVE AND PROTECT ALL EXISTING UTILITIES FROM DAMAGE DURING CONSTRUCTION. ANY DAMAGE BY THE CONTRACTOR TO EXISTING UTILITIES SHALL BE REPAIRED BY THE CONTRACTOR AT HIS EXPENSE.

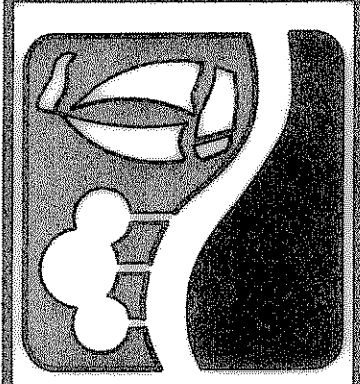
BENCHMARKS:
 "C" CUT IN THE EAST END OF THE HEADWALL LOCATED ON THE NORTHWEST CORNER OF THE INTERSECTION OF BOYDSTUN STREET AND CLARK STREET.
 ELEVATION 534.21
 "C" CUT IN THE SOUTHWEST CORNER OF THE HEADWALL LOCATED ON THE WEST SIDE OF INDUSTRIAL BLVD, APPROXIMATELY 250± FEET NORTH OF THE INTERSECTION OF INDUSTRIAL AND THE I-30 ACCESS ROAD.
 ELEVATION 544.77

LEGEND	
	PROPOSED WATER LINE
	PROPOSED SS LINE
	PROPOSED GATE VALVE
	PROPOSED FIRE HYDRANT
	EXISTING WATER LINE
	EXISTING SS LINE
	EXISTING GATE VALVE
	EXISTING MANHOLE
	EXISTING FIRE HYDRANT



RECORD DRAWING
 01/16/09

PREPARED BY:
WIA WIER & ASSOCIATES, INC.
 ENGINEERS SURVEYORS LAND PLANNERS
 701 HIGHLANDER BLVD., SUITE 300 ARLINGTON, TEXAS 76015 METRO (817)467-7700
 6849 ELM STREET FISCO, TEXAS 75034 METRO (214)397-8000
 www.wierassociates.com



CITY OF ROCKWALL
 TOWNSEND BLVD
 (JUSTIN RD TO BOYDSTUN ST)
 & BOYDSTUN ST
 (TOWNSEND BLVD TO CLARK ST)

TOWNSEND BLVD
 WATER LINE 'A'
 STA 36+00 TO STA 40+50

STATE OF TEXAS
 RONALD RAMIREZ
 81821
 REGISTERED PROFESSIONAL ENGINEER
 Copyright © WIER & ASSOCIATES, INC.
 LAST SHEET EDIT
 DATE: 01-08-2009
 WA# 04124
SHEET NO. U102