

J.I. DAVIS
VOLUME 24, PAGE 379
D.R.R.C.T.

STA 45+11.54 WATERLINE 'A'
= 31.63' RT ST STA 45+49.43
INSTALL:
1-12" 90° BEND

ALONZO GARRET
TRACT
VOLUME 1, PAGE 429
D.R.R.C.T.

GERALD TODD
VOLUME 1533, PAGE 287
D.R.R.C.T.

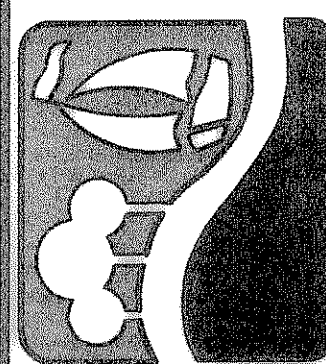
STA 44+04.18 WATERLINE 'A'
= 28.9' RT ST STA 44+42.10
INSTALL:
1-12" X4" TEE
FOR WATER SERVICE

LOT 1, BLOCK A
MUNICIPAL INDUSTRIAL PARK
CABINET A, PAGE 326
P.R.R.C.T.

UNDERGROUND WATERLINE
APPROXIMATE LOCATION=
STA 41+73.49 W.L. 'A'
FIELD VERIFY LOCATION
BEFORE INSTALLING W.L.
AND CONNECTION
INSTALL:
1-12" X8" TEE
1-12" GATE VALVE

CAUTION !!!
UNDERGROUND UTILITIES
EXISTING UTILITIES AND UNDERGROUND FACILITIES INDICATED ON THESE PLANS
HAVE BEEN LOCATED FROM REFERENCE INFORMATION SUPPLIED BY VARIOUS
OWNERS OF THE FACILITIES. THE ENGINEER DOES NOT ACCEPT THE RESPONSIBILITY
FOR THE UTILITY LOCATIONS SHOWN. IT SHALL BE THE RESPONSIBILITY
OF THE CONTRACTOR TO VERIFY BOTH HORIZONTALLY AND VERTICALLY THE
LOCATION OF ALL EXISTING UTILITIES AND UNDERGROUND FACILITIES PRIOR TO
CONSTRUCTION, TO TAKE NECESSARY PRECAUTIONS IN ORDER TO PROTECT
ALL FACILITIES ENCOUNTERED, AND TO NOTIFY THE ENGINEER PROMPTLY OF
ALL CONFLICTS OF THE WORK WITH EXISTING FACILITIES. THE CONTRACTOR
SHALL PRESERVE AND PROTECT ALL EXISTING UTILITIES FROM DAMAGE DURING
CONSTRUCTION. ANY DAMAGE BY THE CONTRACTOR TO EXISTING UTILITIES
SHALL BE REPAIRED BY THE CONTRACTOR AT HIS EXPENSE.

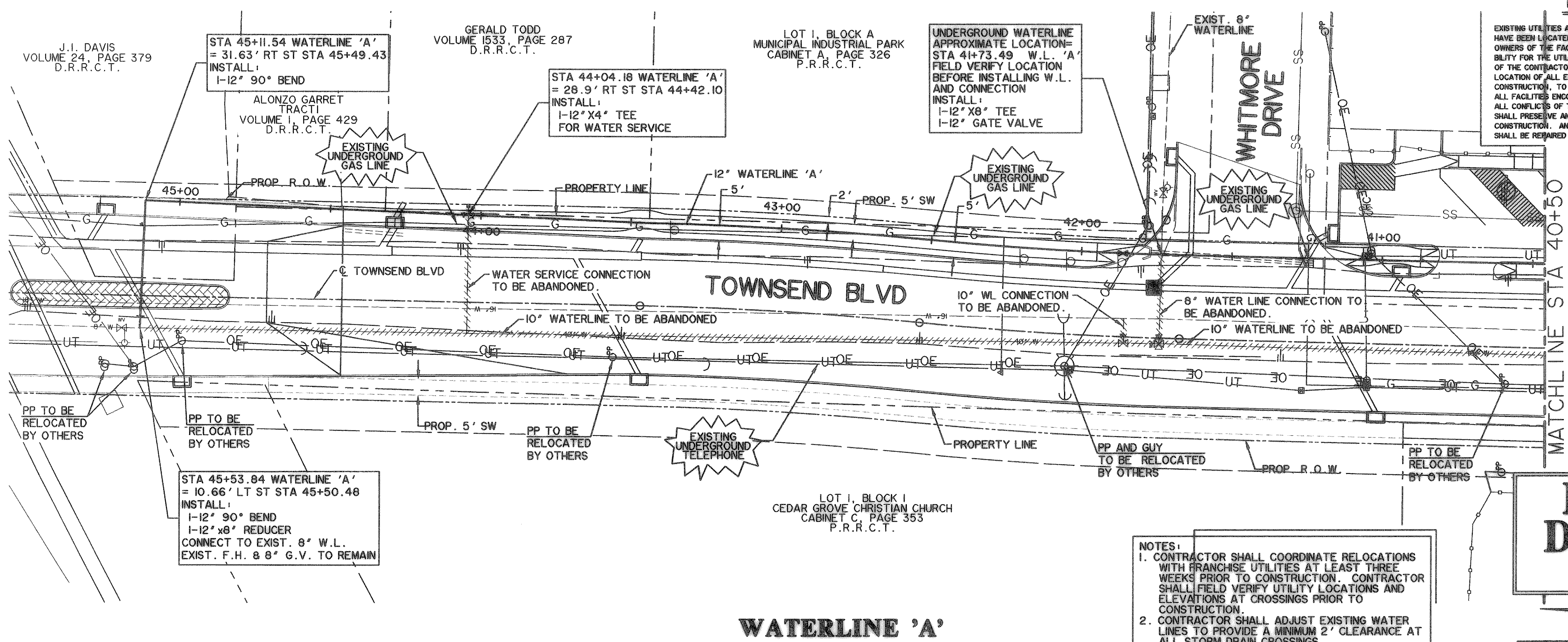
PREPARED BY:
VIA WIER & ASSOCIATES, INC.
ENGINEERS SURVEYORS LAND PLANNERS
701 HIGHLANDER BLVD., SUITE 300 ARLINGTON, TEXAS 76015 METRO (817)467-7700
6849 ELM STREET FRISCO, TEXAS 75034 METRO (214)387-8000
www.viawier.com



CITY OF ROCKWALL
TOWNSEND BLVD
(JUSTIN RD TO BOYDSTUN ST)
& **BOYDSTUN ST**
(TOWNSEND BLVD TO CLARK ST)

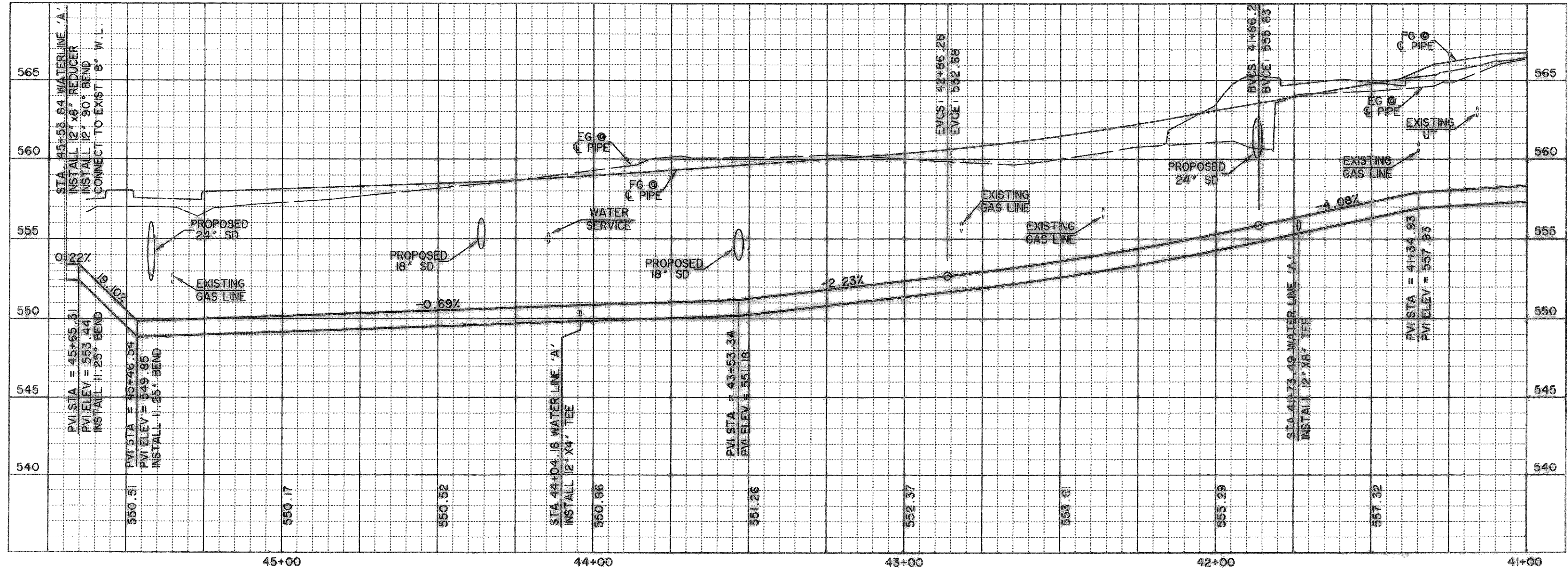
TOWNSEND BLVD
WATER LINE 'A'
STA 40+50 TO STA 45+59

STATE OF TEXAS
RONALD RAMIREZ
19821
REGISTERED
PROFESSIONAL ENGINEER
Copyright ©
VIA WIER & ASSOCIATES, INC.
LAST SHEET EDIT
DATE 01-08-2009
WA# 04124
SHEET NO.
U101



**RECORD
DRAWING**
01/16/09

NOTES:
1. CONTRACTOR SHALL COORDINATE RELOCATIONS WITH FRANCHISE UTILITIES AT LEAST THREE WEEKS PRIOR TO CONSTRUCTION. CONTRACTOR SHALL FIELD VERIFY UTILITY LOCATIONS AND ELEVATIONS AT CROSSINGS PRIOR TO CONSTRUCTION.
2. CONTRACTOR SHALL ADJUST EXISTING WATER LINES TO PROVIDE A MINIMUM 2' CLEARANCE AT ALL STORM DRAIN CROSSINGS.



BENCHMARKS:
 "□" CUT IN THE EAST END OF THE HEADWALL LOCATED ON THE NORTHWEST CORNER OF THE INTERSECTION OF BOYDSTUN STREET AND CLARK STREET. ELEVATION 534.21
 "□" CUT IN THE SOUTHWEST CORNER OF THE HEADWALL LOCATED ON THE WEST SIDE OF INDUSTRIAL BLVD, APPROXIMATELY 250± FEET NORTH OF THE INTERSECTION OF INDUSTRIAL AND THE I-30 ACCESS ROAD. ELEVATION 544.77

LEGEND

- W — PROPOSED WATER LINE
- SS — PROPOSED SS LINE
- G — PROPOSED GATE VALVE
- FH — PROPOSED FIRE HYDRANT
- - - - - EXISTING WATER LINE
- - - - - EXISTING SS LINE
- - - - - EXISTING GATE VALVE
- M — EXISTING MANHOLE
- FH — EXISTING FIRE HYDRANT

FILE: WATER-3-PH-04124.dwg