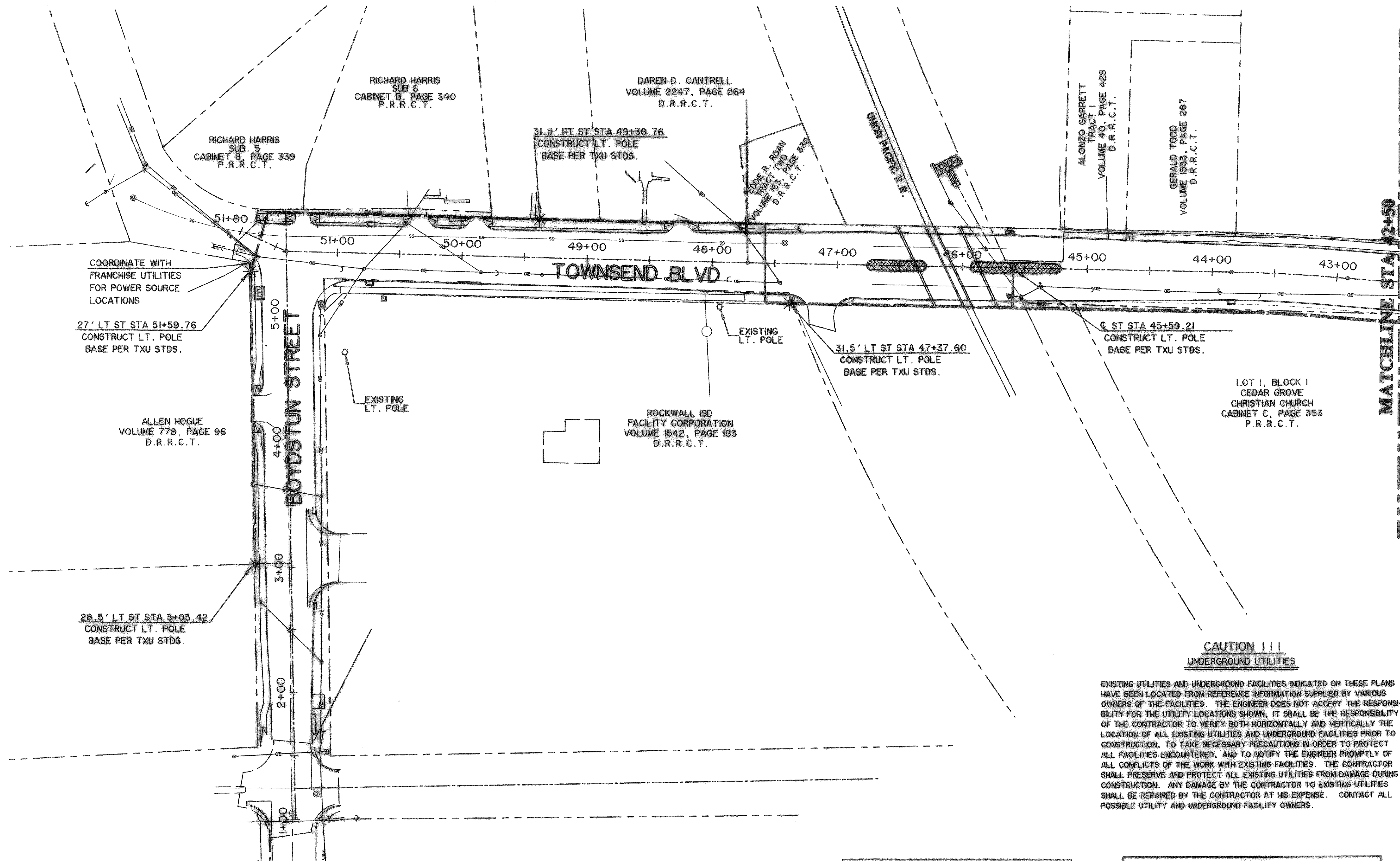


TIME: 15.36 FILE: Streetlightplan-2.dwg



COORDINATE WITH FRANCHISE UTILITIES FOR POWER SOURCE LOCATIONS

27' LT ST STA 51+59.76
CONSTRUCT LT. POLE
BASE PER TXU STDS.

ALLEN HOGUE
VOLUME 778, PAGE 96
D.R.R.C.T.

28.5' LT ST STA 3+03.42
CONSTRUCT LT. POLE
BASE PER TXU STDS.

RICHARD HARRIS
SUB 6
CABINET B, PAGE 340
P.R.R.C.T.

RICHARD HARRIS
SUB 5
CABINET B, PAGE 339
P.R.R.C.T.

DAREN D. CANTRELL
VOLUME 2247, PAGE 264
D.R.R.C.T.

31.5' RT ST STA 49+38.76
CONSTRUCT LT. POLE
BASE PER TXU STDS.

EDNIE P. ROAM
TRACT TWO
VOLUME 163, PAGE 532
D.R.R.C.T.

ALONZO GARRETT
TRACT 1
VOLUME 40, PAGE 429
D.R.R.C.T.

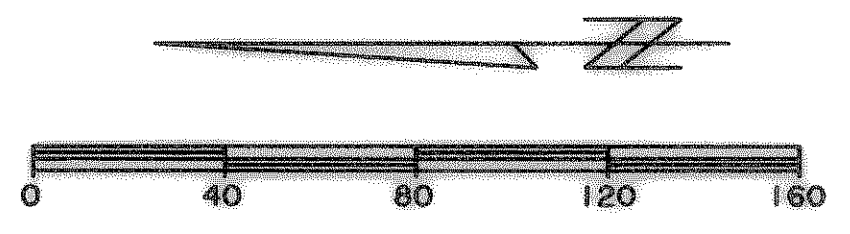
GERALD TODD
VOLUME 1533, PAGE 267
D.R.R.C.T.

ROCKWALL ISD
FACILITY CORPORATION
VOLUME 1542, PAGE 183
D.R.R.C.T.

LOT 1, BLOCK 1
CEDAR GROVE
CHRISTIAN CHURCH
CABINET C, PAGE 353
P.R.R.C.T.

CAUTION !!!
UNDERGROUND UTILITIES

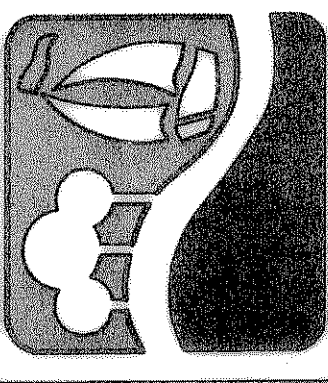
EXISTING UTILITIES AND UNDERGROUND FACILITIES INDICATED ON THESE PLANS HAVE BEEN LOCATED FROM REFERENCE INFORMATION SUPPLIED BY VARIOUS OWNERS OF THE FACILITIES. THE ENGINEER DOES NOT ACCEPT THE RESPONSIBILITY FOR THE UTILITY LOCATIONS SHOWN, IT SHALL BE THE RESPONSIBILITY OF THE CONTRACTOR TO VERIFY BOTH HORIZONTALLY AND VERTICALLY THE LOCATION OF ALL EXISTING UTILITIES AND UNDERGROUND FACILITIES PRIOR TO CONSTRUCTION, TO TAKE NECESSARY PRECAUTIONS IN ORDER TO PROTECT ALL FACILITIES ENCOUNTERED, AND TO NOTIFY THE ENGINEER PROMPTLY OF ALL CONFLICTS OF THE WORK WITH EXISTING FACILITIES. THE CONTRACTOR SHALL PRESERVE AND PROTECT ALL EXISTING UTILITIES FROM DAMAGE DURING CONSTRUCTION. ANY DAMAGE BY THE CONTRACTOR TO EXISTING UTILITIES SHALL BE REPAIRED BY THE CONTRACTOR AT HIS EXPENSE. CONTACT ALL POSSIBLE UTILITY AND UNDERGROUND FACILITY OWNERS.



**RECORD
DRAWING**
01/16/09

LEGEND	
* (with star symbol)	PROPOSED STREET LIGHT AS PER CITY OF ROCKWALL STANDARDS
⊙ (with circle symbol)	EXISTING STREET LIGHT
— (with dashed line symbol)	PROPOSED 2" ELECTRIC CONDUIT

PREPARED BY:
VIA WIER & ASSOCIATES, INC.
ENGINEERS SURVEYORS LAND PLANNERS
701 HIGHLANDER BLVD., SUITE 300 ARLINGTON, TEXAS 76015 METRO (817)467-7700
6849 ELM STREET FRSISO, TEXAS 75004 METRO (214)387-8000
www.viawer.com



CITY OF ROCKWALL
TOWNSEND BLVD
(JUSTIN RD TO BOYDSTUN ST)
& BOYDSTUN ST
(TOWNSEND BLVD TO CLARK ST)

STREET LIGHT PLAN



COPYRIGHT ©
WIER & ASSOCIATES, INC.
LAST SHEET EDIT
DATE 07-17-2006
WA# 04124

SHEET NO.
102