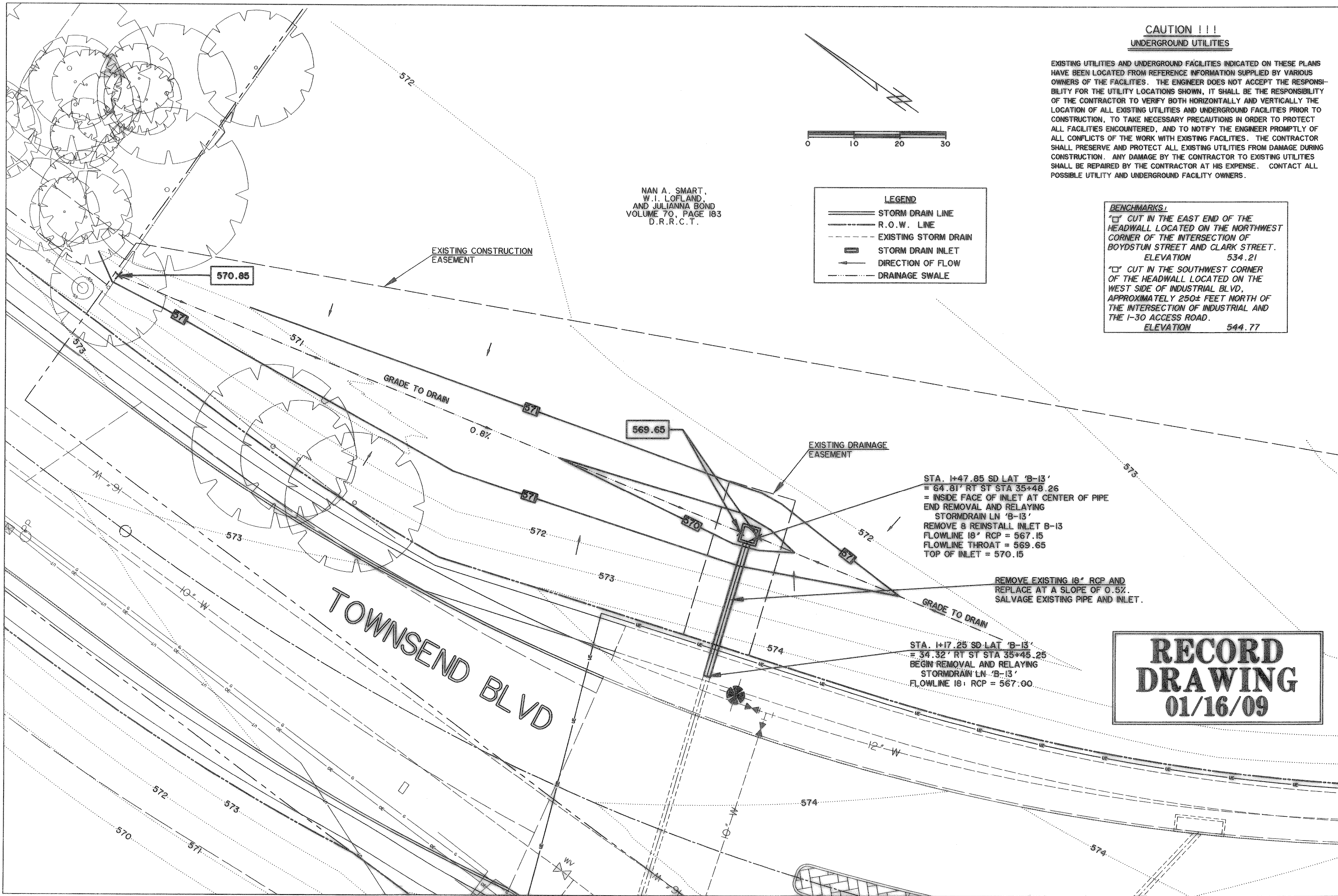


FILE: 9D-LATS4-PH1-04124.dwg  
TIME: 11.42



NAN A. SMART,  
W.I. LOFLAND,  
AND JULIANNA BOND  
VOLUME 70, PAGE 183  
D.R.R.C.T.

**LEGEND**

- STORM DRAIN LINE
- - - R.O.W. LINE
- - - EXISTING STORM DRAIN
- STORM DRAIN INLET
- DIRECTION OF FLOW
- - - DRAINAGE SWALE

**CAUTION !!!  
UNDERGROUND UTILITIES**

EXISTING UTILITIES AND UNDERGROUND FACILITIES INDICATED ON THESE PLANS HAVE BEEN LOCATED FROM REFERENCE INFORMATION SUPPLIED BY VARIOUS OWNERS OF THE FACILITIES. THE ENGINEER DOES NOT ACCEPT THE RESPONSIBILITY FOR THE UTILITY LOCATIONS SHOWN, IT SHALL BE THE RESPONSIBILITY OF THE CONTRACTOR TO VERIFY BOTH HORIZONTALLY AND VERTICALLY THE LOCATION OF ALL EXISTING UTILITIES AND UNDERGROUND FACILITIES PRIOR TO CONSTRUCTION, TO TAKE NECESSARY PRECAUTIONS IN ORDER TO PROTECT ALL FACILITIES ENCOUNTERED, AND TO NOTIFY THE ENGINEER PROMPTLY OF ALL CONFLICTS OF THE WORK WITH EXISTING FACILITIES. THE CONTRACTOR SHALL PRESERVE AND PROTECT ALL EXISTING UTILITIES FROM DAMAGE DURING CONSTRUCTION. ANY DAMAGE BY THE CONTRACTOR TO EXISTING UTILITIES SHALL BE REPAIRED BY THE CONTRACTOR AT HIS EXPENSE. CONTACT ALL POSSIBLE UTILITY AND UNDERGROUND FACILITY OWNERS.

**BENCHMARKS:**  
 "□" CUT IN THE EAST END OF THE HEADWALL LOCATED ON THE NORTHWEST CORNER OF THE INTERSECTION OF BOYDSTUN STREET AND CLARK STREET. ELEVATION 534.21  
 "□" CUT IN THE SOUTHWEST CORNER OF THE HEADWALL LOCATED ON THE WEST SIDE OF INDUSTRIAL BLVD, APPROXIMATELY 250± FEET NORTH OF THE INTERSECTION OF INDUSTRIAL AND THE I-30 ACCESS ROAD. ELEVATION 544.77

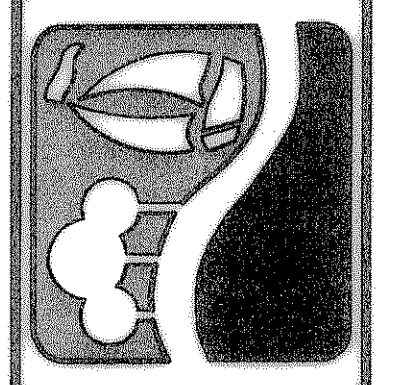
STA. 1+47.85 SD LAT 'B-13'  
 = 64.81' RT ST STA 35+48.26  
 = INSIDE FACE OF INLET AT CENTER OF PIPE  
 END REMOVAL AND RELAYING  
 STORMDRAIN LN 'B-13'  
 REMOVE & REINSTALL INLET B-13  
 FLOWLINE 18" RCP = 567.15  
 FLOWLINE THROAT = 569.65  
 TOP OF INLET = 570.15

REMOVE EXISTING 18" RCP AND  
 REPLACE AT A SLOPE OF 0.5%.  
 SALVAGE EXISTING PIPE AND INLET.

STA. 1+17.25 SD LAT 'B-13'  
 = 34.32' RT ST STA 35+45.25  
 BEGIN REMOVAL AND RELAYING  
 STORMDRAIN LN 'B-13'  
 FLOWLINE 18" RCP = 567.00

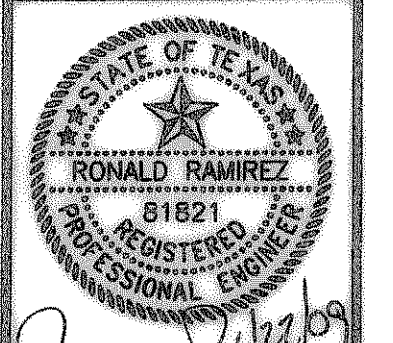
**RECORD  
DRAWING  
01/16/09**

PREPARED BY:  
**VIA WIER & ASSOCIATES, INC.**  
 ENGINEERS SURVEYORS LAND PLANNERS  
 701 HIGHLANDER BLVD., SUITE 300 ARLINGTON, TEXAS 76015 METRO (817)467-7700  
 6849 ELI STREET FRISCO, TEXAS 75004 METRO (214)387-0000  
 www.viawier.com



**CITY OF ROCKWALL  
TOWNSEND BLVD  
(JUSTIN RD TO BOYDSTUN ST)  
& BOYDSTUN ST  
(TOWNSEND BLVD TO CLARK ST)**

**TOWNSEND BLVD  
STORMDRAIN LAT 'B-13'**



Copyright ©  
 WIER & ASSOCIATES, INC.  
 LAST SHEET EDIT  
 DATE: 01-16-2009  
 WA# 04124  
**SHEET NO.  
D108**