

ROCKWALL INDEPENDENT SCHOOL DISTRICT PUBLIC FACILITY CORPORATION VOLUME 1542, PAGE 183 D.R.R.C.T.

STA. 0+14.82 SD LAT 'D-5'  
= 35.50' LT ST STA 50+63.29  
= INSIDE FACE OF INLET AT STORM DRAIN  
CONSTRUCT 3'X3' DROP INLET

STA. 0+34.33 SD LAT 'D-3'  
= 22.50' LT ST STA 50+73.56  
= INSIDE FACE OF INLET @ C PIPE  
CONSTRUCT STD. 5' CURB INLET

1.69' RT. STA. 2+68.76 SD LINE 'D'  
= STA. 0+00 SD LAT 'D-3'  
= 8.36' RT ST STA 50+89.45  
CONSTRUCT 60° WYE

PT 2' RT STA. 2+78.50 SD LINE 'D'  
= 7.71' RT ST STA 50+77.44

TOWNSEND BLVD

1.74' STA. 2+74.50 SD LINE 'D'  
= STA. 0+00 SD LAT 'D-4'  
= 9.69' RT ST STA 50+81.78  
CONSTRUCT 60° WYE

STA. 0+17.22 SD LAT 'D-4'  
= 22.50' RT ST STA 50+73.56  
CONSTRUCT STD. 5' CURB INLET

RICHARD HARRIS  
SUB. 6  
CABINET B, PAGE 340  
P.R.R.C.T.

STA. 0+42.10 SD LAT 'D-6'  
INSTALL 45° BEND  
N = 7025345.29  
E = 2596515.97

BOYDSTUN STREET

STA. 0+53.80 SD LAT 'D-6'  
= 20.5' LT ST STA 5+16.90 BOYDSTUN ST  
= INSIDE FACE OF INLET @ C PIPE  
CONSTRUCT STD. 5' CURB INLET

CONTRACTOR SHALL VERIFY VERTICAL CLEARANCE OF SANITARY SEWER TO STORM DRAIN LATERAL 'D-6' PRIOR TO CONSTRUCTION.

ALLEN HOGUE  
VOLUME 778, PAGE 96  
D.R.R.C.T.

D = 22°20'29"  
R = 600.00'  
L = 233.96'  
T = 118.48'  
CH = S12°32'09" W  
LC = 232.48'

STA. 0+50.12 SD LINE 'D'  
CONSTRUCT CH-PW-S HDWL AND DOWEL INTO EXIST. HDWL WITH #3 BARS @ 12" O.C.  
N = 7025492.50  
E = 2596608.11

RICHARD HARRIS  
SUB. 5  
CABINET B, PAGE 339  
P.R.R.C.T.

PC STA. 0+75.51 SD LINE 'D'  
N = 7025469.25  
E = 2596597.90

EXIST. 2 X 36" RCP

CAUTION !!!  
UNDERGROUND UTILITIES

EXISTING UTILITIES AND UNDERGROUND FACILITIES INDICATED ON THESE PLANS HAVE BEEN LOCATED FROM REFERENCE INFORMATION SUPPLIED BY VARIOUS OWNERS OF THE FACILITIES. THE ENGINEER DOES NOT ACCEPT THE RESPONSIBILITY FOR THE UTILITY LOCATIONS SHOWN, IT SHALL BE THE RESPONSIBILITY OF THE CONTRACTOR TO VERIFY BOTH HORIZONTALLY AND VERTICALLY THE LOCATION OF ALL EXISTING UTILITIES AND UNDERGROUND FACILITIES PRIOR TO CONSTRUCTION, TO TAKE NECESSARY PRECAUTIONS IN ORDER TO PROTECT ALL FACILITIES ENCOUNTERED, AND TO NOTIFY THE ENGINEER PROMPTLY OF ALL CONFLICTS OF THE WORK WITH EXISTING FACILITIES. THE CONTRACTOR SHALL PRESERVE AND PROTECT ALL EXISTING UTILITIES FROM DAMAGE DURING CONSTRUCTION. ANY DAMAGE BY THE CONTRACTOR TO EXISTING UTILITIES SHALL BE REPAIRED BY THE CONTRACTOR AT HIS EXPENSE. CONTACT ALL POSSIBLE UTILITY AND UNDERGROUND FACILITY OWNERS.

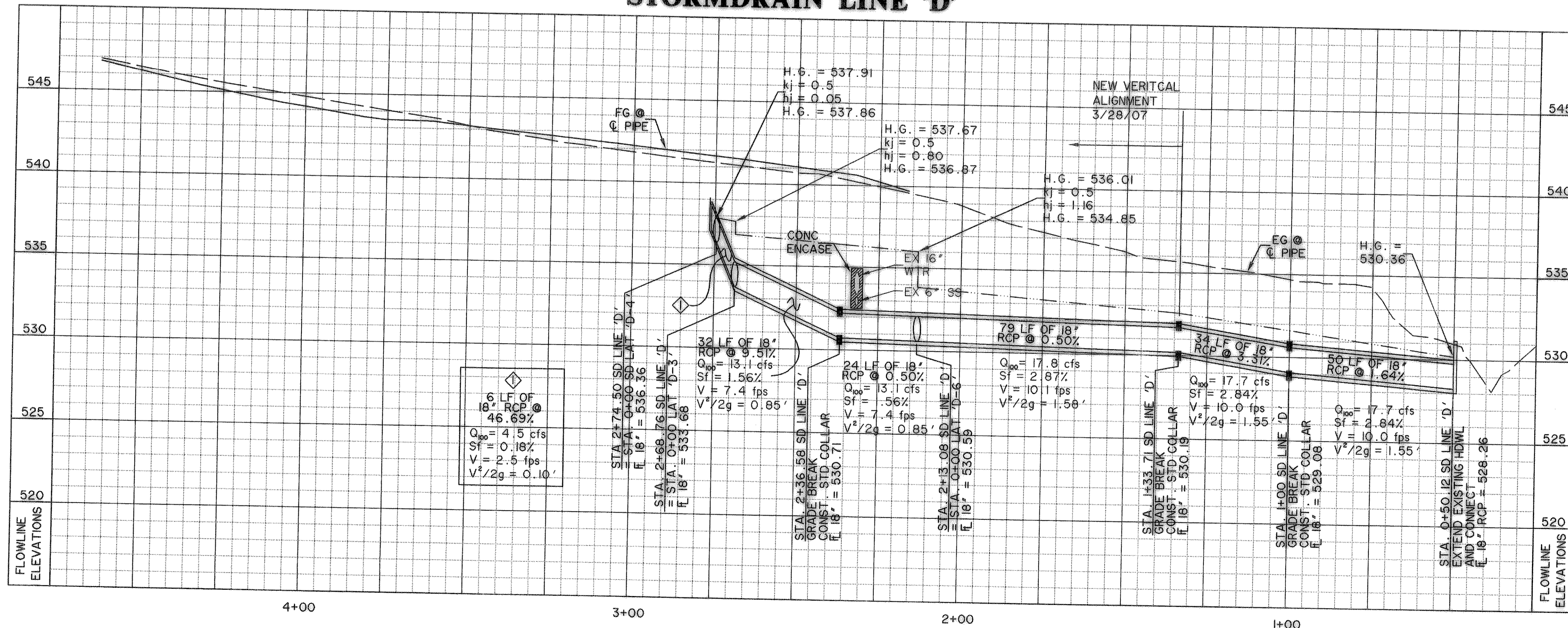
BENCHMARKS:

"□" CUT IN THE EAST END OF THE HEADWALL LOCATED ON THE NORTHWEST CORNER OF THE INTERSECTION OF BOYDSTUN STREET AND CLARK STREET.  
ELEVATION 534.21

"□" CUT IN THE SOUTHWEST CORNER OF THE HEADWALL LOCATED ON THE WEST SIDE OF INDUSTRIAL BLVD, APPROXIMATELY 250± FEET NORTH OF THE INTERSECTION OF INDUSTRIAL AND THE I-30 ACCESS ROAD.  
ELEVATION 544.77

- NOTES:
- CONTRACTOR SHALL FIELD VERIFY LOCATIONS OF EXISTING DRAINAGE INFRASTRUCTURE PRIOR TO CONSTRUCTION AND NOTIFY ENGINEER OF ANY DISCREPANCIES.
  - CONTRACTOR SHALL COORDINATE RELOCATIONS WITH FRANCHISE UTILITIES AT LEAST THREE WEEKS PRIOR TO CONSTRUCTION. CONTRACTOR SHALL FIELD VERIFY UTILITY LOCATIONS AND ELEVATIONS AT CROSSINGS PRIOR TO CONSTRUCTION.
  - CONTRACTOR SHALL ADJUST EXISTING WATER LINES TO PROVIDE A MINIMUM 2' CLEARANCE AT ALL STORM DRAIN CROSSINGS. CONTRACTOR SHALL FIELD VERIFY LOCATIONS OF EXISTING WATERLINE @ SD CROSSINGS PRIOR TO CONSTRUCTION.

STORMDRAIN LINE 'D'

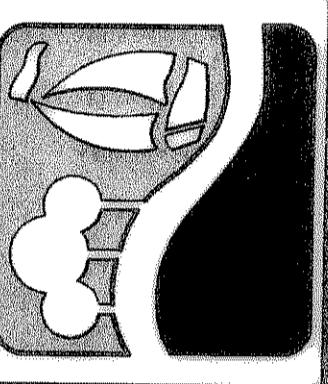


LEGEND

- STORM DRAIN LINE
- R.O.W. LINE
- EXISTING STORM DRAIN
- STORM DRAIN INLET
- DIRECTION OF FLOW

RECORD DRAWING  
01/16/09

PREPARED BY:  
**VIA WIER & ASSOCIATES, INC.**  
ENGINEERS SURVEYORS LAND PLANNERS  
701 HIGHLANDER BLVD., SUITE 300 ARLINGTON, TEXAS 76015 METRO (817)467-7700  
6849 ELM STREET FRODO, TEXAS 75034 METRO (214)387-8000  
www.WierAssociates.com



CITY OF ROCKWALL  
TOWNSEND BLVD  
(JUSTIN RD TO BOYDSTUN ST)  
& BOYDSTUN ST  
(TOWNSEND BLVD TO CLARK ST)

TOWNSEND BLVD  
STORMDRAIN LINE 'D'  
STA 0+00 TO STA 4+62.09

STATE OF TEXAS  
RONALD RAMIREZ  
81821  
REGISTERED PROFESSIONAL ENGINEER

COPYRIGHT ©  
WIER & ASSOCIATES, INC.  
LAST SHEET EDIT  
DATE 01-08-2009  
WA# 04124

SHEET NO.  
D103