

- NOTES
- CONTRACTOR SHALL FIELD VERIFY LOCATIONS OF EXISTING DRAINAGE INFRASTRUCTURE PRIOR TO CONSTRUCTION AND NOTIFY ENGINEER OF ANY DISCREPANCIES.
 - CONTRACTOR SHALL COORDINATE RELOCATIONS WITH FRANCHISE UTILITIES AT LEAST THREE WEEKS PRIOR TO CONSTRUCTION. CONTRACTOR SHALL FIELD VERIFY UTILITY LOCATIONS AND ELEVATIONS AT CROSSINGS PRIOR TO CONSTRUCTION.
 - CONTRACTOR SHALL ADJUST EXISTING WATER LINES TO PROVIDE A MINIMUM 2' CLEARANCE AT ALL STORM DRAIN CROSSINGS. CONTRACTOR SHALL FIELD VERIFY LOCATIONS OF EXISTING WATERLINE @ SD CROSSINGS PRIOR TO CONSTRUCTION.

LOT 1, BLOCK 1
CEDAR GROVE
CHRISTIAN CHURCH
CABINET C, PAGE 353
P.R.R.C.T.

STA. 0+49.41 SD LAT. 'C-7'
= 26.29' LT ST STA 45+36.18
= INSIDE FACE OF INLET @ C PIPE
CONSTRUCT 5' CURB INLET
MODIFIED FOR 3' DEPTH

STA. 1+92.97 SD LINE 'C'
= 0+00 SD LAT 'C-7'
= 16.50' RT ST STA 45+60.89
INSTALL 60° WYE

STA. 1+77.94 SD LINE 'C'
= 16.50' RT ST STA 45+75.91
INSTALL 45° BEND

STA. 1+73.94 SD LINE 'C'
= 19.33' RT ST STA 45+78.74
INSTALL 15° BEND

STA. 2+82.68 SD LINE 'C'
= 0+00 SD LAT 'C-13'
= 16.50' RT ST STA 44+71.18
INSTALL 60° WYE

STA. 0+45.08 SD LAT. 'C-5'
= 22.54' LT ST STA 43+84.31
= INSIDE FACE OF INLET @ C PIPE
CONSTRUCT STD. 5' CURB INLET

STA. 3+47.00 SD LINE 'C'
= 0+00 SD LAT 'C-5'
= 16.50' RT ST STA 44+06.85
INSTALL 60° WYE

D = 4°07'42"
R = 1183.50'
L = 85.27'
T = 42.66'
CH = S03°28'56"W
LC = 85.26'

STA. 3+66.06 SD LINE 'C'
= 0+00 SD LAT 'C-6'
= 16.50' RT ST STA 43+87.80
INSTALL 60° WYE

PC STA. 3+69.41 SD LINE 'C'
= 16.50' RT ST STA 43+84.45

D = 4°26'20"
R = 1216.50'
L = 94.24'
T = 47.15'
CH = N03°19'37"E
LC = 94.22'

STA. 0+6.39 LAT 'C-6'
= 22.04' RT ST STA 43+84.60
INSTALL PLUG FOR FUTURE USE

STA. 0+6.01 STUB 'C-13'
= 32.50' RT ST STA 44+63.46
STUB TO RIGHT-OF-WAY AND
PLUG FOR FUTURE USE

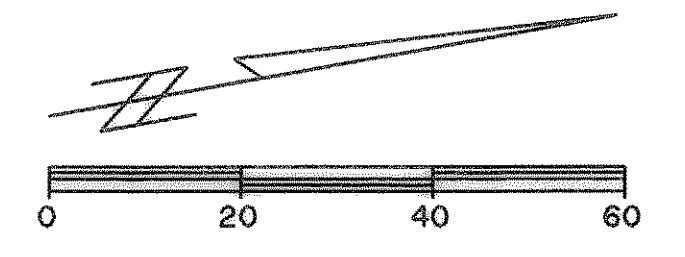
STA. 0+9.30 SD LAT 'C-6B'
= 24.55' RT ST STA 44+66.53
= INSIDE FACE OF INLET @ C PIPE
CONSTRUCT STD. 5' CURB INLET

STA. 0+12.05 SD LAT 'C-8'
= 26.94' RT ST STA 45+62.47
PLUG PIPE FOR FUTURE USE

STA. 1+17.62 SD LINE 'C'
= 68.11' RT ST STA 46+06.90
CONSTRUCT SLOPING HEADWALL

CAUTION !!!
UNDERGROUND UTILITIES

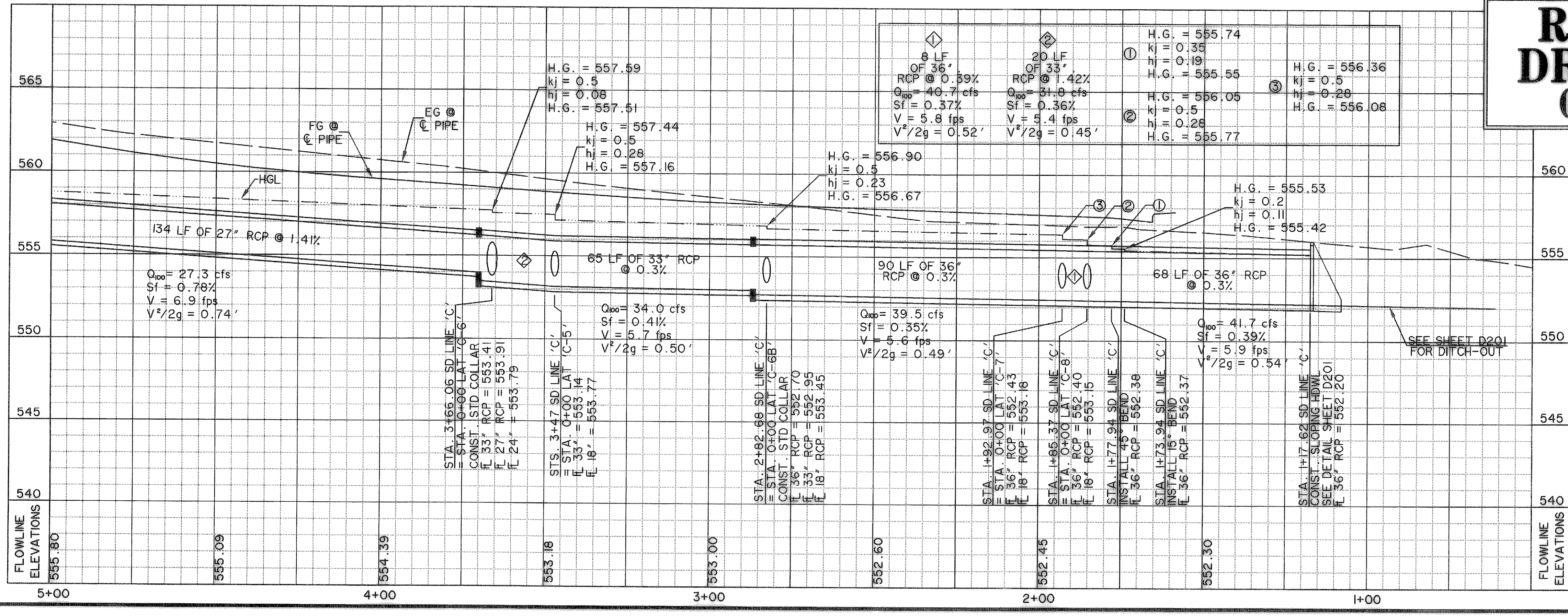
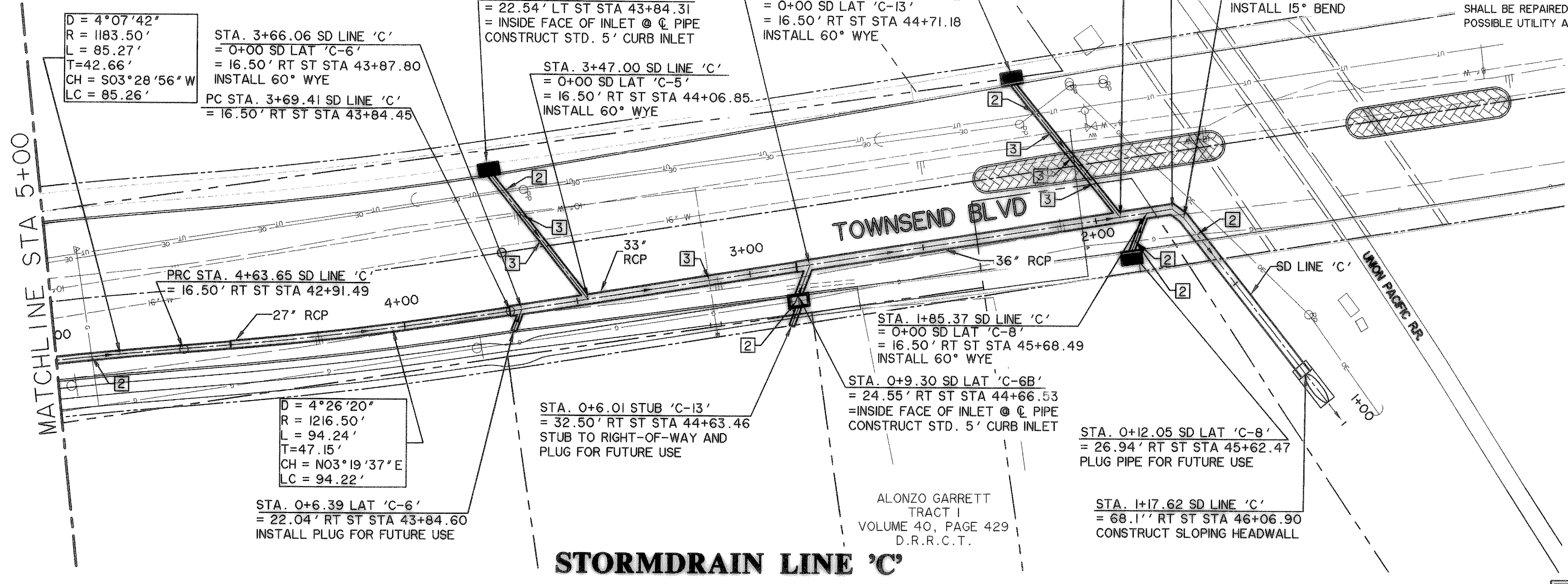
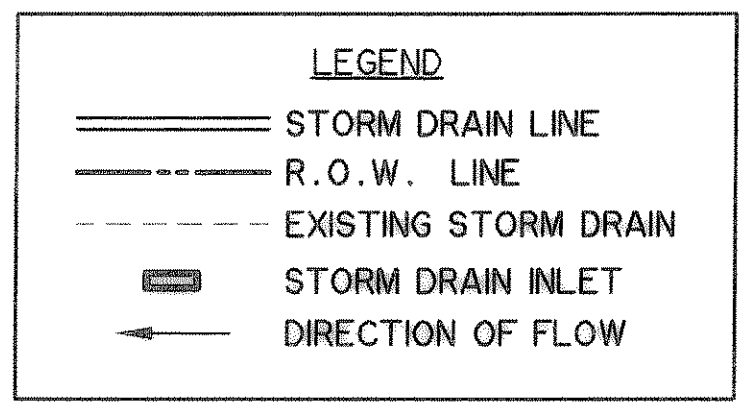
EXISTING UTILITIES AND UNDERGROUND FACILITIES INDICATED ON THESE PLANS HAVE BEEN LOCATED FROM REFERENCE INFORMATION SUPPLIED BY VARIOUS OWNERS OF THE FACILITIES. THE ENGINEER DOES NOT ACCEPT THE RESPONSIBILITY FOR THE UTILITY LOCATIONS SHOWN, IT SHALL BE THE RESPONSIBILITY OF THE CONTRACTOR TO VERIFY BOTH HORIZONTALLY AND VERTICALLY THE LOCATION OF ALL EXISTING UTILITIES AND UNDERGROUND FACILITIES PRIOR TO CONSTRUCTION, TO TAKE NECESSARY PRECAUTIONS IN ORDER TO PROTECT ALL FACILITIES ENCOUNTERED, AND TO NOTIFY THE ENGINEER PROMPTLY OF ALL CONFLICTS OF THE WORK WITH EXISTING FACILITIES. THE CONTRACTOR SHALL PRESERVE AND PROTECT ALL EXISTING UTILITIES FROM DAMAGE DURING CONSTRUCTION. ANY DAMAGE BY THE CONTRACTOR TO EXISTING UTILITIES SHALL BE REPAIRED BY THE CONTRACTOR AT HIS EXPENSE. CONTACT ALL POSSIBLE UTILITY AND UNDERGROUND FACILITY OWNERS.



BENCHMARKS:

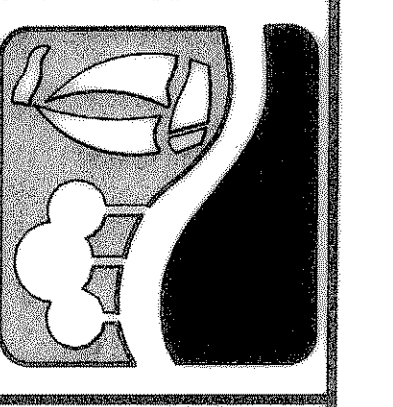
"□" CUT IN THE EAST END OF THE HEADWALL LOCATED ON THE NORTHWEST CORNER OF THE INTERSECTION OF BOYDSTUN STREET AND CLARK STREET. ELEVATION 534.21

"□" CUT IN THE SOUTHWEST CORNER OF THE HEADWALL LOCATED ON THE WEST SIDE OF INDUSTRIAL BLVD, APPROXIMATELY 250± FEET NORTH OF THE INTERSECTION OF INDUSTRIAL AND THE I-30 ACCESS ROAD. ELEVATION 544.77



RECORD DRAWING
01/16/09

PREPARED BY:
VIA WIER & ASSOCIATES, INC.
ENGINEERS SURVEYORS LAND PLANNERS
701 HIGHLANDER BLVD., SUITE 300 ARLINGTON, TEXAS 76015 METRO (817)467-7700
6849 ELM STREET FRISCO, TEXAS 75034 METRO (214)387-8800
www.wierassociates.com



CITY OF ROCKWALL
TOWNSEND BLVD
(JUSTIN RD TO BOYDSTUN ST)
& BOYDSTUN ST
(TOWNSEND BLVD TO CLARK ST)

STORM DRAIN
LINE 'C'
STA 1+00 TO STA 5+00

STATE OF TEXAS
RONALD RAMIREZ
81821
REGISTERED PROFESSIONAL ENGINEER
Ronald Ramirez
COPYRIGHT ©
WIER & ASSOCIATES, INC.
LAST SHEET EDIT
DATE 01-21-2009
WAB 04124
SHEET NO.
D102