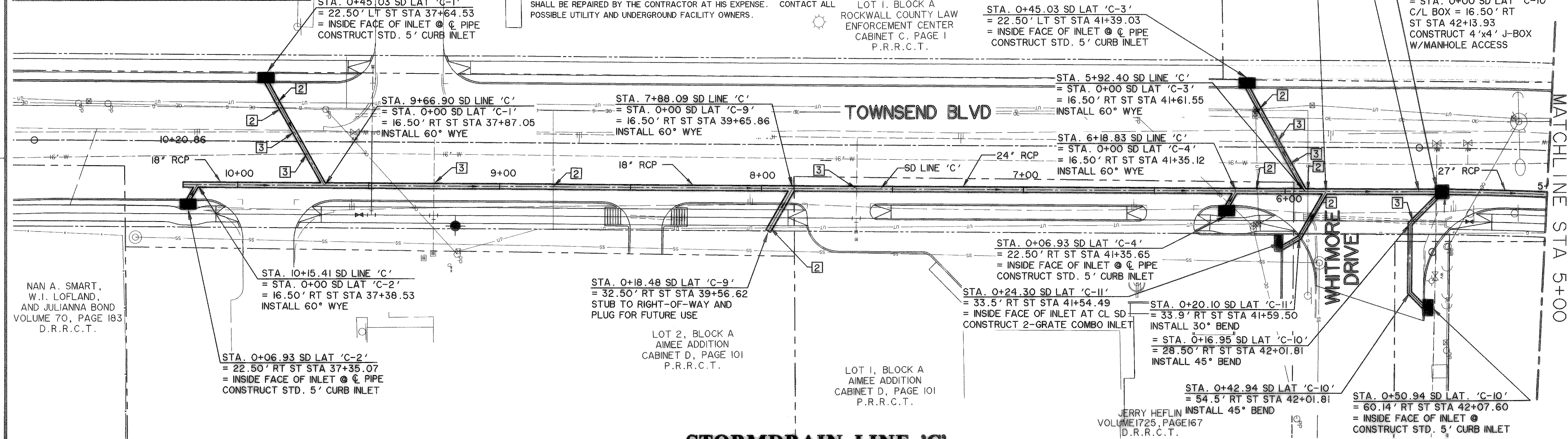
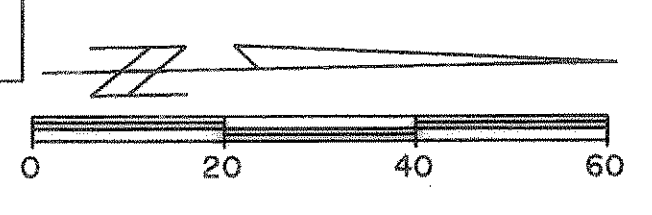
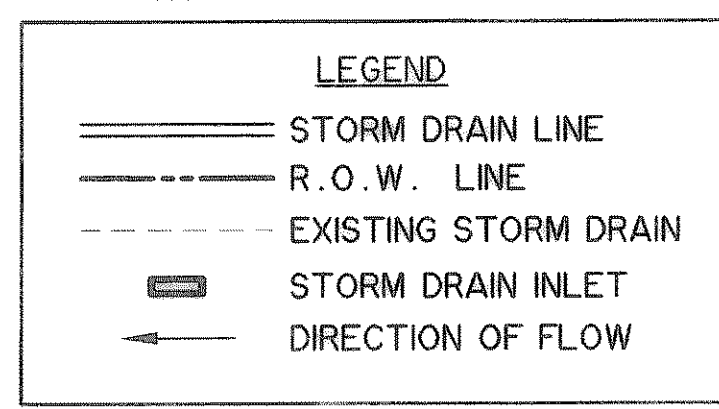


NOTES: 1) CONTRACTOR SHALL FIELD VERIFY LOCATIONS OF EXISTING DRAINAGE INFRASTRUCTURE PRIOR TO CONSTRUCTION AND NOTIFY ENGINEER OF ANY DISCREPANCIES.
 2) CONTRACTOR SHALL COORDINATE RELOCATIONS WITH FRANCHISE UTILITIES AT LEAST THREE WEEKS PRIOR TO CONSTRUCTION. CONTRACTOR SHALL FIELD VERIFY UTILITY LOCATIONS AND ELEVATIONS AT CROSSINGS PRIOR TO CONSTRUCTION.
 3) CONTRACTOR SHALL ADJUST EXISTING WATER LINES TO PROVIDE A MINIMUM 2' CLEARANCE AT ALL STORM DRAIN CROSSINGS. CONTRACTOR SHALL FIELD VERIFY LOCATIONS OF EXISTING WATERLINE @ SD CROSSINGS PRIOR TO CONSTRUCTION.

BENCHMARKS:
 'C' CUT IN THE EAST END OF THE HEADWALL LOCATED ON THE NORTHWEST CORNER OF THE INTERSECTION OF BOYDSTUN STREET AND CLARK STREET. ELEVATION 534.21
 'C' CUT IN THE SOUTHWEST CORNER OF THE HEADWALL LOCATED ON THE WEST SIDE OF INDUSTRIAL BLVD, APPROXIMATELY 250± FEET NORTH OF THE INTERSECTION OF INDUSTRIAL AND THE I-30 ACCESS ROAD. ELEVATION 544.77

CAUTION !!!
 UNDERGROUND UTILITIES
 EXISTING UTILITIES AND UNDERGROUND FACILITIES INDICATED ON THESE PLANS HAVE BEEN LOCATED FROM REFERENCE INFORMATION SUPPLIED BY VARIOUS OWNERS OF THE FACILITIES. THE ENGINEER DOES NOT ACCEPT THE RESPONSIBILITY FOR THE UTILITY LOCATIONS SHOWN, IT SHALL BE THE RESPONSIBILITY OF THE CONTRACTOR TO VERIFY BOTH HORIZONTALLY AND VERTICALLY THE LOCATION OF ALL EXISTING UTILITIES AND UNDERGROUND FACILITIES PRIOR TO CONSTRUCTION. TO TAKE NECESSARY PRECAUTIONS IN ORDER TO PROTECT ALL FACILITIES ENCOUNTERED, AND TO NOTIFY THE ENGINEER PROMPTLY OF ALL CONFLICTS OF THE WORK WITH EXISTING FACILITIES. THE CONTRACTOR SHALL PRESERVE AND PROTECT ALL EXISTING UTILITIES FROM DAMAGE DURING CONSTRUCTION. ANY DAMAGE TO THE CONTRACTOR TO EXISTING UTILITIES SHALL BE REPAIRED BY THE CONTRACTOR AT HIS EXPENSE. CONTACT ALL POSSIBLE UTILITY AND UNDERGROUND FACILITY OWNERS.



NAN A. SMART,
 W.I. LOFLAND,
 AND JULIANNA BOND
 VOLUME 70, PAGE 183
 D.R.R.C.T.

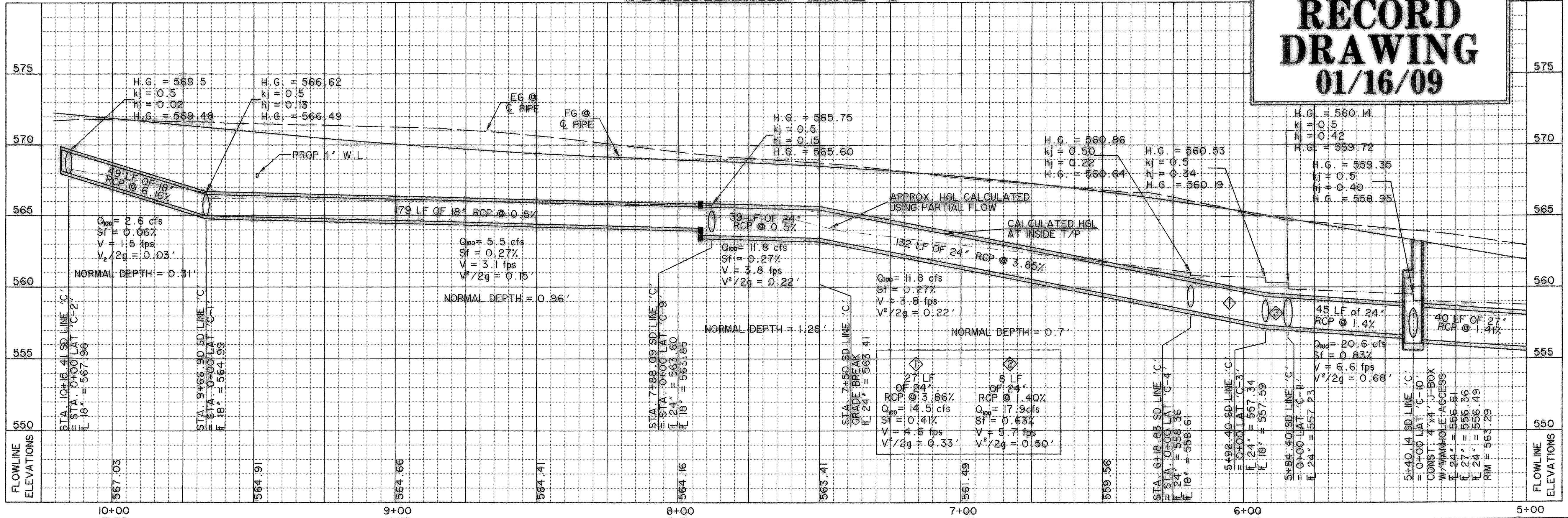
STA. 10+15.41 SD LINE 'C'
 = STA. 0+00 SD LAT 'C-2'
 = 16.50' RT ST STA 37+38.53
 INSTALL 60° WYE

STA. 0+18.48 SD LAT 'C-9'
 = 32.50' RT ST STA 39+56.62
 STUB TO RIGHT-OF-WAY AND
 PLUG FOR FUTURE USE

STA. 0+24.30 SD LAT 'C-II'
 = 33.5' RT ST STA 41+54.49
 = INSIDE FACE OF INLET @ CL SD
 CONSTRUCT 2-GRATE COMBO INLET

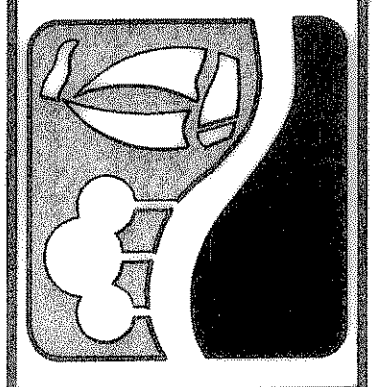
STA. 0+50.94 SD LAT 'C-10'
 = 60.14' RT ST STA 42+07.60
 = INSIDE FACE OF INLET @
 CONSTRUCT STD. 5' CURB INLET

STORMDRAIN LINE 'C'



**RECORD
 DRAWING
 01/16/09**

PREPARED BY:
VIA WIER & ASSOCIATES, INC.
 ENGINEERS SURVEYORS LAND PLANNERS
 701 HIGHLANDER BLVD., SUITE 300 ARLINGTON, TEXAS 76015 METRO (817)467-7700
 6848 ELM STREET FRISCO, TEXAS 75034 METRO (214)387-8800
 www.via-wier.com



**CITY OF ROCKWALL
 TOWNSEND BLVD
 (JUSTIN RD TO BOYDSTUN ST)
 & BOYDSTUN ST
 (TOWNSEND BLVD TO CLARK ST)**

**STORM DRAIN
 LINE 'C'
 STA 5+00 TO STA 10+25**

STATE OF TEXAS
 REGISTERED PROFESSIONAL ENGINEER
 81821
 RONALD KAMM
 COPYRIGHT ©
 WIER & ASSOCIATES, INC.
 DATE: 01-16-2009
 SHEET EDIT
 WA# 04124
**SHEET NO.
 D101**