

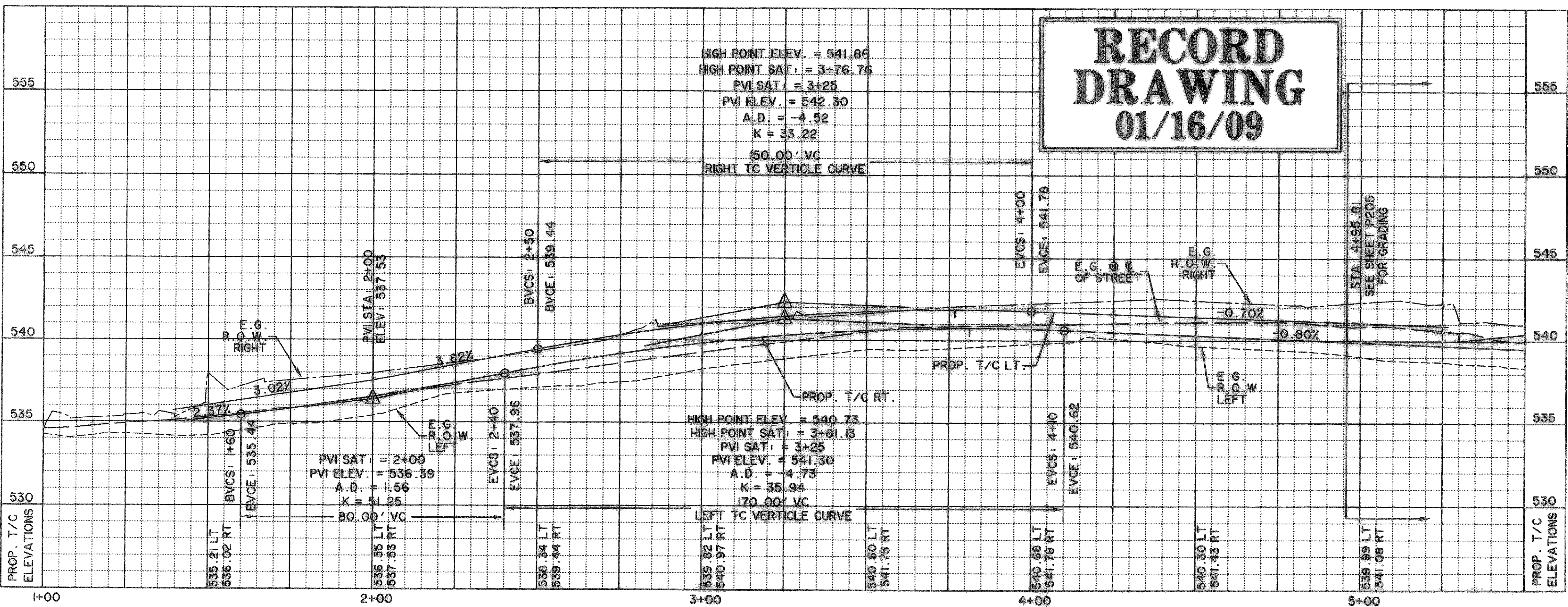
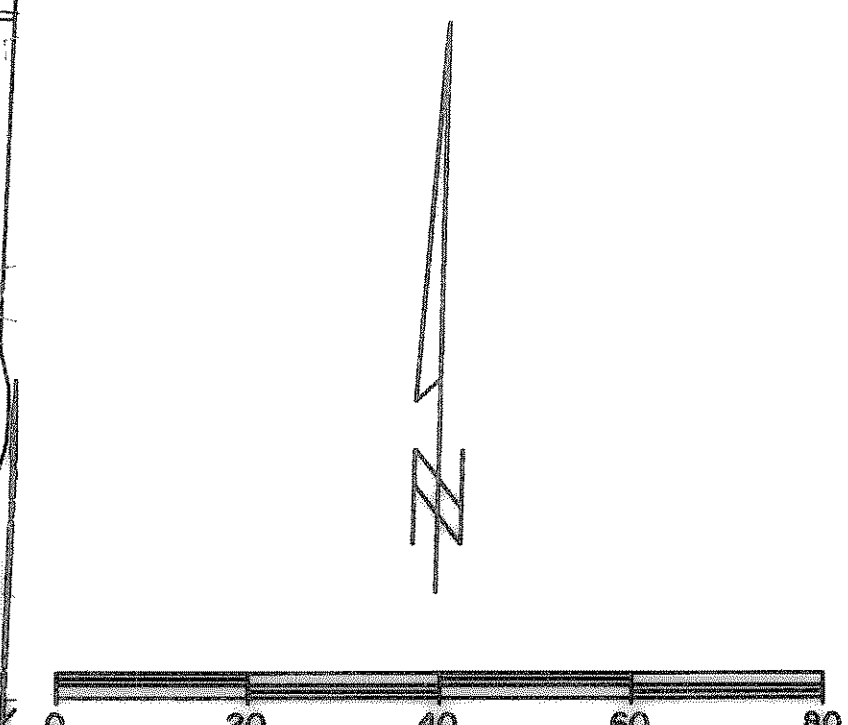
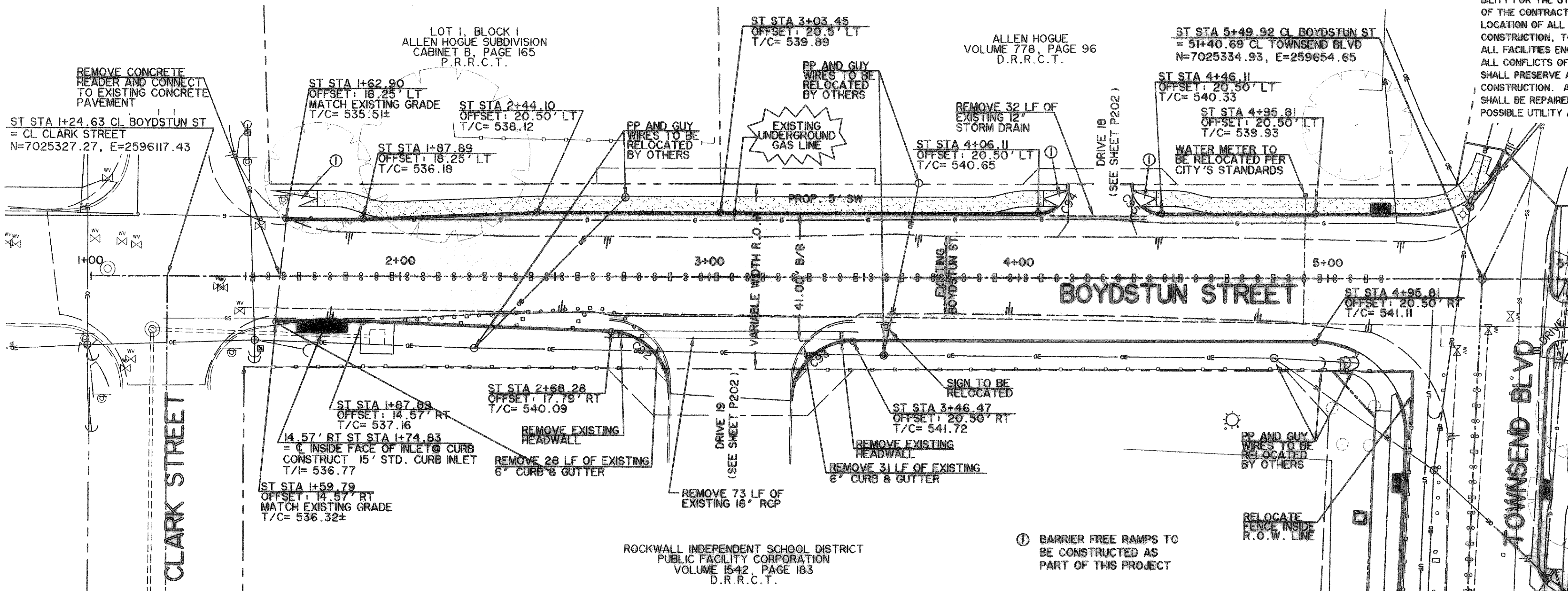
CURVE	DELTA	LENGTH	RADIUS	TANGENT	CHORD BEARING	CHORD LENGTH
C92	88°30'59"	30.13	19.50	19.00	S44°32'07"E	27.22
C93	89°06'00"	30.32	19.50	19.20	N44°26'59"E	27.36
C94	87°50'32"	14.56	9.50	9.15	N45°04'43"E	13.18
C95	88°00'05"	14.59	9.50	9.17	S46°59'58"E	13.20

CAUTION !!!
UNDERGROUND UTILITIES

EXISTING UTILITIES AND UNDERGROUND FACILITIES INDICATED ON THESE PLANS HAVE BEEN LOCATED FROM REFERENCE INFORMATION SUPPLIED BY VARIOUS OWNERS OF THE FACILITIES. THE ENGINEER DOES NOT ACCEPT THE RESPONSIBILITY FOR THE UTILITY LOCATIONS SHOWN, IT SHALL BE THE RESPONSIBILITY OF THE CONTRACTOR TO VERIFY BOTH HORIZONTALLY AND VERTICALLY THE LOCATION OF ALL EXISTING UTILITIES AND UNDERGROUND FACILITIES PRIOR TO CONSTRUCTION, TO TAKE NECESSARY PRECAUTIONS IN ORDER TO PROTECT ALL FACILITIES ENCOUNTERED, AND TO NOTIFY THE ENGINEER PROMPTLY OF ALL CONFLICTS OF THE WORK WITH EXISTING UTILITIES. THE CONTRACTOR SHALL PRESERVE AND PROTECT ALL EXISTING UTILITIES FROM DAMAGE DURING CONSTRUCTION. ANY DAMAGE TO EXISTING UTILITIES SHALL BE REPAIRED BY THE CONTRACTOR AT HIS EXPENSE. CONTACT ALL POSSIBLE UTILITY AND UNDERGROUND FACILITY OWNERS.

NOTES

- CONTRACTOR SHALL COORDINATE RELOCATIONS WITH FRANCHISE UTILITIES AT LEAST THREE WEEKS PRIOR TO CONSTRUCTION.
- ALL DIMENSIONS, LINES, CURVES, AND POINTS ARE TO THE BACK OF CURB UNLESS NOTED OTHERWISE.
- AT THE TIME THAT IMPROVEMENTS TO BOYDSTUN STREET WERE BEING DESIGNED, CLARK STREET WAS UNDER CONSTRUCTION. THE EXACT LOCATION AT TIE IN FOR THIS INTERSECTION SHALL BE DETERMINED PRIOR TO CONSTRUCTION.



RECORD DRAWING
01/16/09

LEGEND

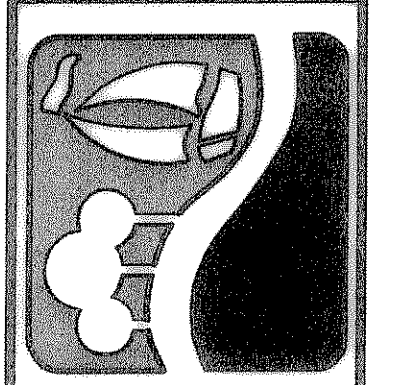
- 3600 PSI CONCRETE PAVEMENT
- PROPOSED SIDEWALK
- PROPOSED ASPHALT PAVEMENT
- W - EXISTING WATER LINE
- SS - EXISTING SEWER LINE
- R.O.W. LINE
- LOT LINE
- FIRE HYDRANT
- STORM DRAIN INLET
- WATER VALVES
- DIRECTION OF FLOW
- EXISTING SIGN
- OE - EXISTING OVERHEAD ELECTRIC
- G - EXISTING UNDERGROUND GAS
- EXISTING WATER VALVE
- UT - EXISTING UNDERGROUND TELEPHONE
- EXISTING ASPHALT PAVEMENT
- BARRIER FREE RAMP TO BE CONST. W/PROJECT
- INTERLOCKING PAVING STONES TO BE APPROVED BY CITY

BENCHMARKS:

"1" CUT IN THE EAST END OF THE HEADWALL LOCATED ON THE NORTHWEST CORNER OF THE INTERSECTION OF BOYDSTUN STREET AND CLARK STREET. ELEVATION 534.21

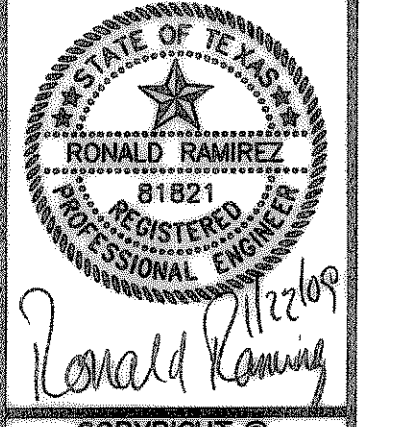
"2" CUT IN THE SOUTHWEST CORNER OF THE HEADWALL LOCATED ON THE WEST SIDE OF INDUSTRIAL BLVD, APPROXIMATELY 250± FEET NORTH OF THE INTERSECTION OF INDUSTRIAL AND THE I-30 ACCESS ROAD. ELEVATION 544.77

PREPARED BY:
VIA WIER & ASSOCIATES, INC.
ENGINEERS SURVEYORS LAND PLANNERS
701 HIGHLANDER BLVD., SUITE 300 ARLINGTON, TEXAS 76015 METRO (817)467-7700
6849 ELM STREET FRISCO, TEXAS 75034 METRO (214)367-8000
www.viawier.com



CITY OF ROCKWALL
TOWNSEND BLVD
(JUSTIN RD TO BOYDSTUN ST)
& BOYDSTUN ST
(TOWNSEND BLVD TO CLARK ST)

BOYDSTUN STREET
PAVING PLAN & PROFILE
STA 1+00 TO STA 5+50



Copyright ©
WIER & ASSOCIATES, INC.
LAST SHEET EDIT
DATE 01-16-2009
WA# 04124
SHEET NO.
P106