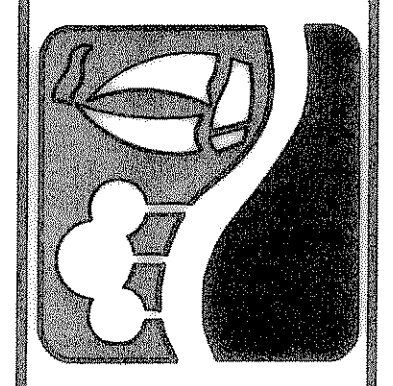


CURVE TABLE						
CURVE	DELTA	LENGTH, FT	RADIUS, FT	TANGENT, FT	CHORD BR	CHORD, FT
C66	28°04'31"	256.03	522.50	130.64	S29°39'01"E	253.48
C67	27°05'04"	236.12	499.50	120.31	S30°08'45"E	233.93
C68	24°47'30"	216.56	500.50	110.00	S31°17'33"E	214.88
C69	41°55'32"	349.41	477.50	182.94	S19°32'41"E	341.66
C70	75°13'37"	32.17	24.50	18.88	S53°13'34"E	29.91
C71	98°26'15"	24.91	14.50	16.81	N39°35'14"E	21.96
C72	11°02'59"	100.77	522.50	50.54	N04°06'24"W	100.61

CAUTION !!!
UNDERGROUND UTILITIES

EXISTING UTILITIES AND UNDERGROUND FACILITIES INDICATED ON THESE PLANS HAVE BEEN LOCATED FROM REFERENCE INFORMATION SUPPLIED BY VARIOUS OWNERS OF THE FACILITIES. THE ENGINEER DOES NOT ACCEPT THE RESPONSIBILITY FOR THE UTILITY LOCATIONS SHOWN, IT SHALL BE THE RESPONSIBILITY OF THE CONTRACTOR TO VERIFY BOTH HORIZONTALLY AND VERTICALLY THE LOCATION OF ALL EXISTING UTILITIES AND UNDERGROUND FACILITIES PRIOR TO CONSTRUCTION. TO TAKE NECESSARY PRECAUTIONS IN ORDER TO PROTECT ALL FACILITIES ENCOUNTERED, AND TO NOTIFY THE ENGINEER PROMPTLY OF ALL CONFLICTS OF THE WORK WITH EXISTING FACILITIES. THE CONTRACTOR SHALL PRESERVE AND PROTECT ALL EXISTING UTILITIES FROM DAMAGE DURING CONSTRUCTION. ANY DAMAGE BY THE CONTRACTOR TO EXISTING UTILITIES SHALL BE REPAIRED BY THE CONTRACTOR AT HIS EXPENSE. CONTACT ALL POSSIBLE UTILITY AND UNDERGROUND FACILITY OWNERS.

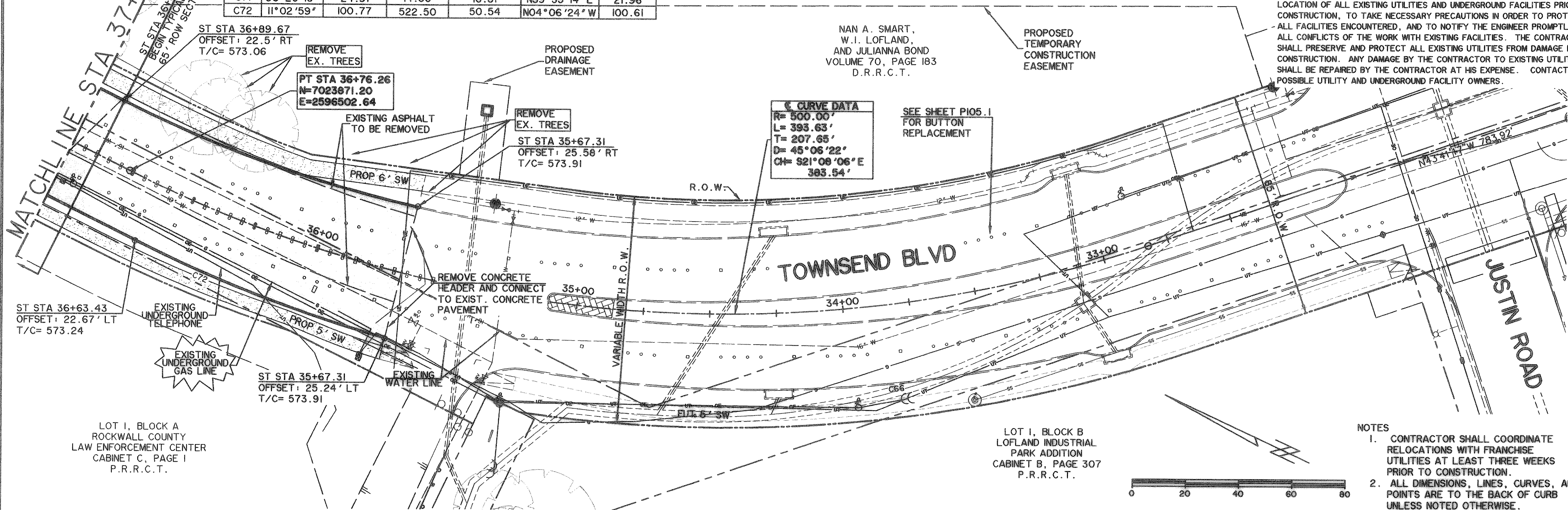
PREPARED BY:
VIA WIER & ASSOCIATES, INC.
ENGINEERS SURVEYORS LAND PLANNERS
701 HIGHLANDER BLVD., SUITE 300 ARLINGTON, TEXAS 76015 METRO (817)467-7700
6849 ELIA STREET FRSO, TEXAS 75034 METRO (214)397-8000
www.viawier.com



CITY OF ROCKWALL
TOWNSEND BLVD
(JUSTIN RD TO BOYDSTUN ST)
& BOYDSTUN ST
(TOWNSEND BLVD TO CLARK ST)

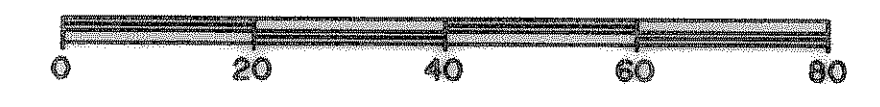
TOWNSEND BLVD
PAVING PLAN & PROFILE
STA 32+00 TO STA 37+00

STATE OF TEXAS
RONALD RAMIREZ
81821
REGISTERED
PROFESSIONAL ENGINEER
1/22/09
Ronald Ramirez
COPYRIGHT ©
WIER & ASSOCIATES, INC.
LAST SHEET EDIT
DATE: 01-07-2009
W/A# 04124
SHEET NO.
P105



C CURVE DATA
R= 500.00'
L= 393.63'
T= 207.65'
D= 45°06'22"
CH= S21°08'06"E
383.54'

SEE SHEET P105.1
FOR BUTTON
REPLACEMENT



- NOTES**
- CONTRACTOR SHALL COORDINATE RELOCATIONS WITH FRANCHISE UTILITIES AT LEAST THREE WEEKS PRIOR TO CONSTRUCTION.
 - ALL DIMENSIONS, LINES, CURVES, AND POINTS ARE TO THE BACK OF CURB UNLESS NOTED OTHERWISE.

**RECORD
DRAWING
01/16/09**

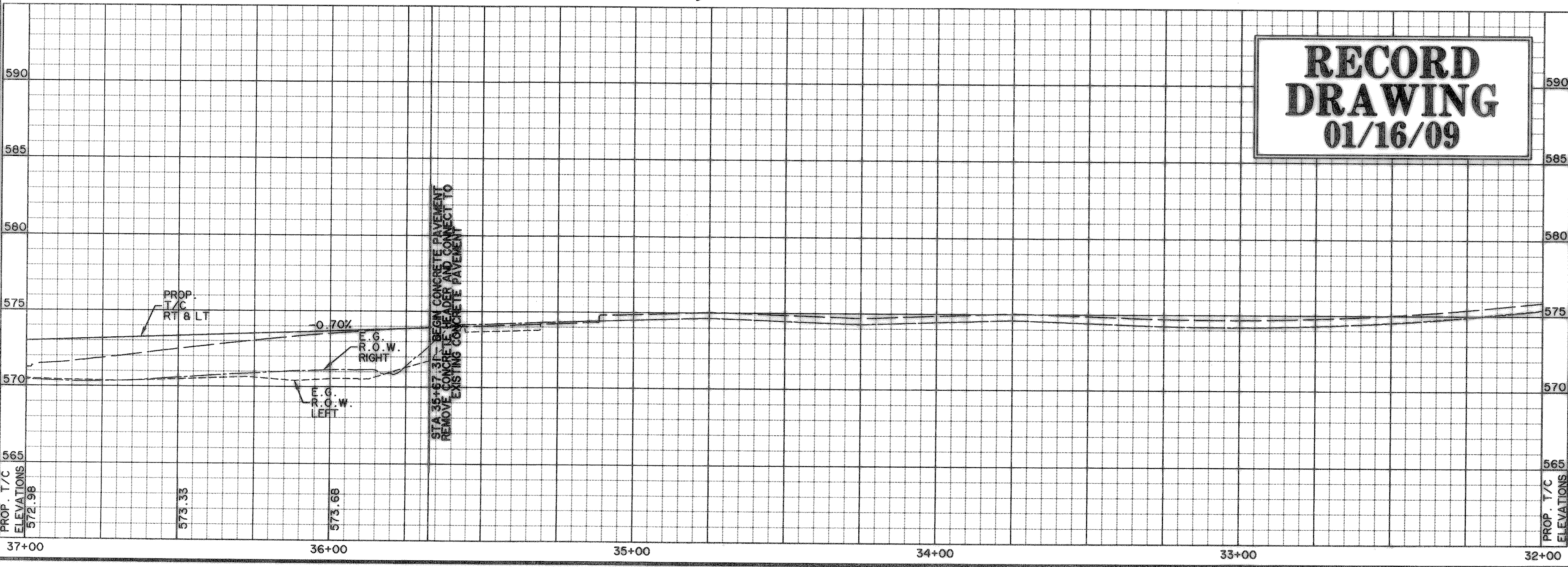
LEGEND

	3600 PSI CONCRETE PAVEMENT
	PROPOSED SIDEWALK
	PROPOSED ASPHALT PAVEMENT
	W EXISTING WATER LINE
	SS EXISTING SEWER LINE
	R.O.W. LINE
	LOT LINE
	FIRE HYDRANT
	STORM DRAIN INLET
	WATER VALVES
	DIRECTION OF FLOW
	EXISTING SIGN
	OE EXISTING OVERHEAD ELECTRIC
	G EXISTING UNDERGROUND GAS
	WV EXISTING WATER VALVE
	UT EXISTING UNDERGROUND TELEPHONE
	ASP EXISTING ASPHALT PAVEMENT
	BARRIER FREE RAMP TO BE CONST. W/PROJECT
	INTERLOCKING PAVING STONES TO BE APPROVED BY CITY

BENCHMARKS:

"1" CUT IN THE EAST END OF THE HEADWALL LOCATED ON THE NORTHWEST CORNER OF THE INTERSECTION OF BOYDSTUN STREET AND CLARK STREET. ELEVATION 534.21

"2" CUT IN THE SOUTHWEST CORNER OF THE HEADWALL LOCATED ON THE WEST SIDE OF INDUSTRIAL BLVD, APPROXIMATELY 250± FEET NORTH OF THE INTERSECTION OF INDUSTRIAL AND THE I-30 ACCESS ROAD. ELEVATION 544.77



TIME: 16.04 FILE: PAVEL-P105-04124.dwg