

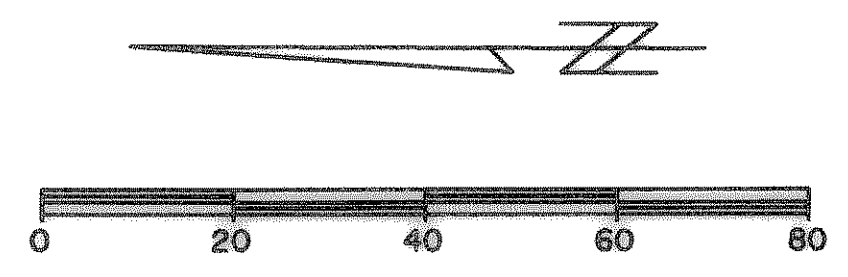
CURVE TABLE						
CURVE	DELTA	LENGTH, FT	RADIUS, FT	TANGENT, FT	CHORD BR	CHORD, FT
C73	71°55'12"	18.20	14.50	10.52	N37°22'41"E	17.03
C74	71°55'12"	18.20	14.50	10.52	N34°32'31"E	17.03
C75	71°55'12"	18.20	14.50	10.52	N34°32'31"W	17.03
C76	71°55'12"	18.20	14.50	10.52	N37°22'41"E	17.03

CAUTION !!!
UNDERGROUND UTILITIES

EXISTING UTILITIES AND UNDERGROUND FACILITIES INDICATED ON THESE PLANS HAVE BEEN LOCATED FROM REFERENCE INFORMATION SUPPLIED BY VARIOUS OWNERS OF THE FACILITIES. THE ENGINEER DOES NOT ACCEPT THE RESPONSIBILITY FOR THE UTILITY LOCATIONS SHOWN, IT SHALL BE THE RESPONSIBILITY OF THE CONTRACTOR TO VERIFY BOTH HORIZONTALLY AND VERTICALLY THE LOCATION OF ALL EXISTING UTILITIES AND UNDERGROUND FACILITIES PRIOR TO CONSTRUCTION, TO TAKE NECESSARY PRECAUTIONS IN ORDER TO PROTECT ALL FACILITIES ENCOUNTERED, AND TO NOTIFY THE ENGINEER PROMPTLY OF ALL CONFLICTS OF THE WORK WITH EXISTING FACILITIES. THE CONTRACTOR SHALL PRESERVE AND PROTECT ALL EXISTING UTILITIES FROM DAMAGE DURING CONSTRUCTION. ANY DAMAGE BY THE CONTRACTOR TO EXISTING UTILITIES SHALL BE REPAIRED BY THE CONTRACTOR AT HIS EXPENSE. CONTACT ALL POSSIBLE UTILITY AND UNDERGROUND FACILITY OWNERS.

- NOTES
1. CONTRACTOR SHALL COORDINATE RELOCATIONS WITH FRANCHISE UTILITIES AT LEAST THREE WEEKS PRIOR TO CONSTRUCTION.
 2. ALL DIMENSIONS, LINES, CURVES, AND POINTS ARE TO THE BACK OF CURB UNLESS NOTED OTHERWISE.
 3. CONCRETE FOR THE PAVEMENT WITHIN THE TRANSITION FROM THE 85' R.O.W. TO THE 65' R.O.W. SHALL MEET THE REQUIREMENT OF THE 85' R.O.W. SECTION (4200 PSI). CONCRETE WITHIN THE 65' R.O.W. SHALL BE 3600 PSI. (SEE SHEET P005)

RECORD DRAWING
01/16/09



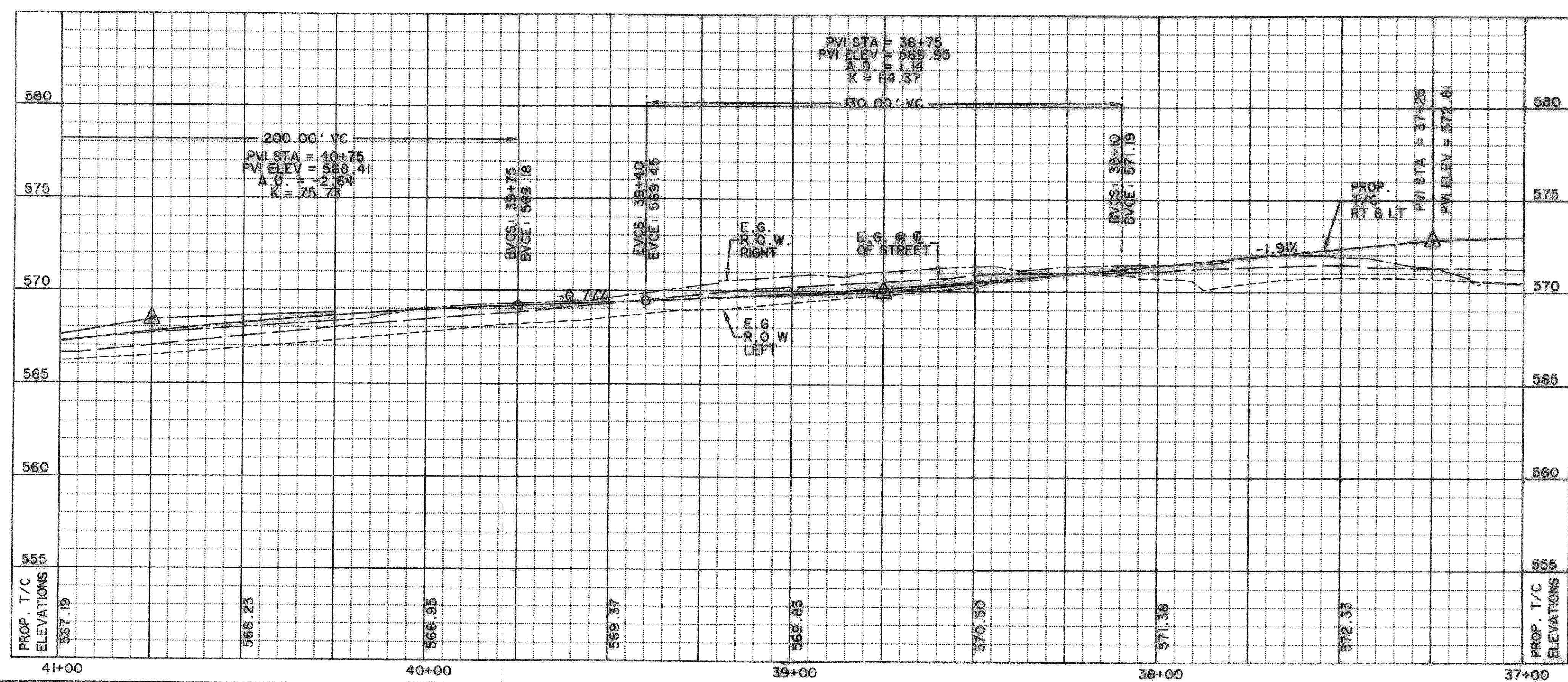
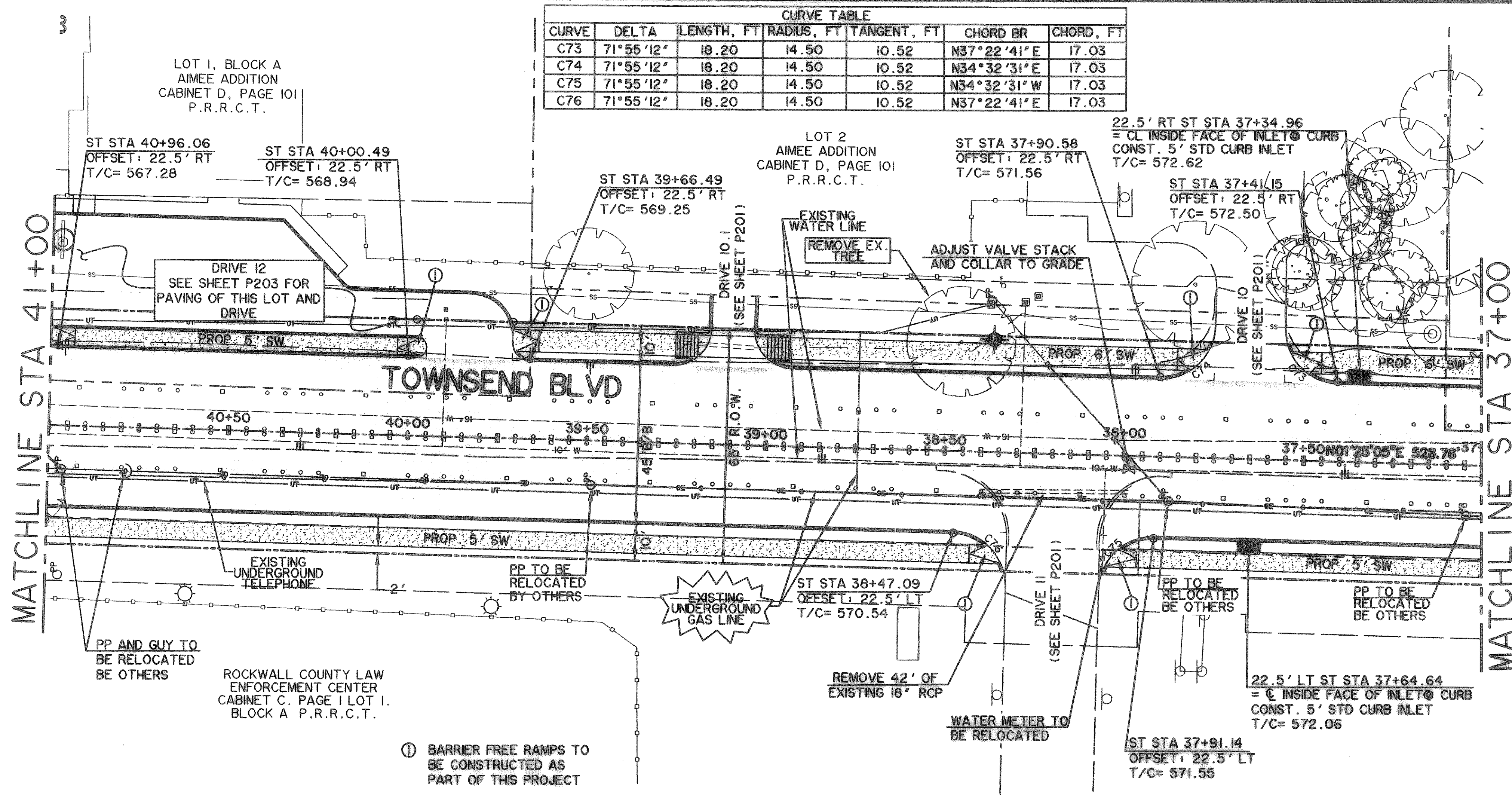
LEGEND

- 3600 PSI CONCRETE PAVEMENT
- PROPOSED SIDEWALK
- PROPOSED ASPHALT PAVEMENT
- W - EXISTING WATER LINE
- SS - EXISTING SEWER LINE
- R.O.W. LINE
- LOT LINE
- FIRE HYDRANT
- STORM DRAIN INLET
- WATER VALVES
- DIRECTION OF FLOW
- EXISTING SIGN
- OE - EXISTING OVERHEAD ELECTRIC
- G - EXISTING UNDERGROUND GAS
- WV - EXISTING WATER VALVE
- UT - EXISTING UNDERGROUND TELEPHONE
- TT - EXISTING ASPHALT PAVEMENT
- BARRIER FREE RAMP TO BE CONST. W/PROJECT
- INTERLOCKING PAVING STONES TO BE APPROVED BY CITY

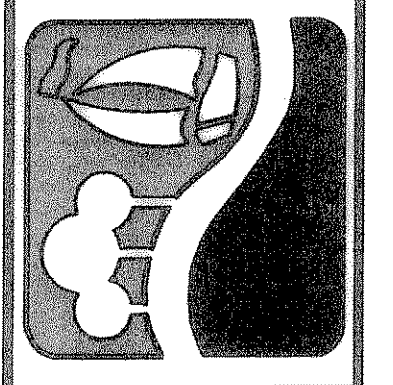
BENCHMARKS:

"C" CUT IN THE EAST END OF THE HEADWALL LOCATED ON THE NORTHWEST CORNER OF THE INTERSECTION OF BOYDSTUN STREET AND CLARK STREET.
ELEVATION 534.21

"C" CUT IN THE SOUTHWEST CORNER OF THE HEADWALL LOCATED ON THE WEST SIDE OF INDUSTRIAL BLVD. APPROXIMATELY 250± FEET NORTH OF THE INTERSECTION OF INDUSTRIAL AND THE I-30 ACCESS ROAD.
ELEVATION 544.77



PREPARED BY:
VIA WIER & ASSOCIATES, INC.
ENGINEERS SURVEYORS LAND PLANNERS
701 HIGHLANDER BLVD., SUITE 300 ARLINGTON, TEXAS 76015 METRO (817)467-7700
6849 ELM STREET FRISCO, TEXAS 75034 METRO (214)387-9000
www.viawier.com



CITY OF ROCKWALL
TOWNSEND BLVD
(JUSTIN RD TO BOYDSTUN ST)
& BOYDSTUN ST
(TOWNSEND BLVD TO CLARK ST)

TOWNSEND BLVD
PAVING PLAN & PROFILE
STA 37+00 TO STA 41+00

STATE OF TEXAS
PROFESSIONAL ENGINEER
RONALD RAMIREZ
51821
REGISTERED PROFESSIONAL ENGINEER

Ronald Ramirez

COPYRIGHT ©
WIER & ASSOCIATES, INC.
ASST. SHEET EDITOR
DATE 01-16-2009
WA# 04124

SHEET NO.
P104