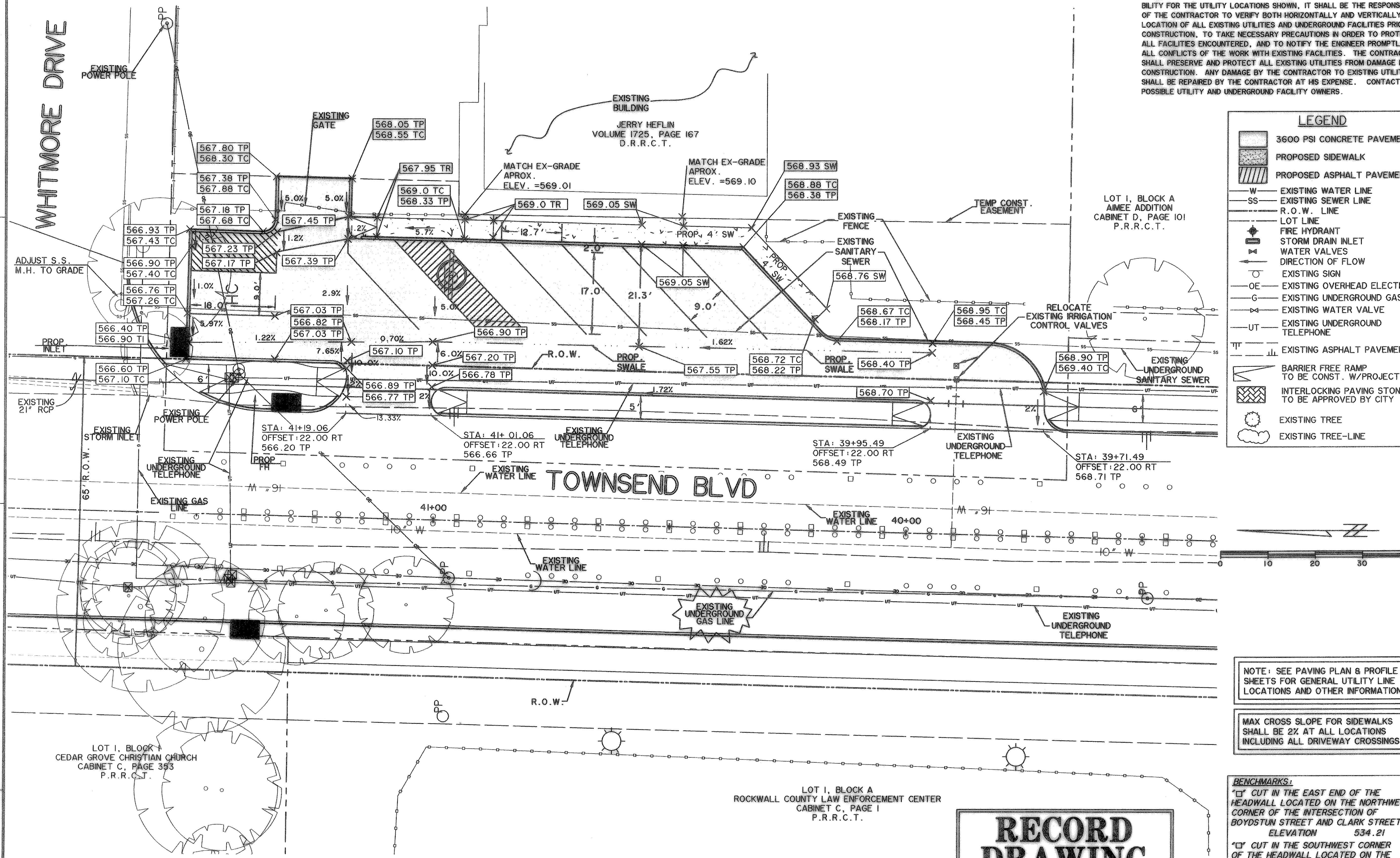


DRIVE 12A @ TOWNSEND ST STA 51+28.22  
DRIVE 12B @ TOWNSEND ST STA 51+28.22

CAUTION !!!  
UNDERGROUND UTILITIES

EXISTING UTILITIES AND UNDERGROUND FACILITIES INDICATED ON THESE PLANS HAVE BEEN LOCATED FROM REFERENCE INFORMATION SUPPLIED BY VARIOUS OWNERS OF THE FACILITIES. THE ENGINEER DOES NOT ACCEPT THE RESPONSIBILITY FOR THE UTILITY LOCATIONS SHOWN, IT SHALL BE THE RESPONSIBILITY OF THE CONTRACTOR TO VERIFY BOTH HORIZONTALLY AND VERTICALLY THE LOCATION OF ALL EXISTING UTILITIES AND UNDERGROUND FACILITIES PRIOR TO CONSTRUCTION, TO TAKE NECESSARY PRECAUTIONS IN ORDER TO PROTECT ALL FACILITIES ENCOUNTERED, AND TO NOTIFY THE ENGINEER PROMPTLY OF ALL CONFLICTS OF THE WORK WITH EXISTING FACILITIES. THE CONTRACTOR SHALL PRESERVE AND PROTECT ALL EXISTING UTILITIES FROM DAMAGE DURING CONSTRUCTION. ANY DAMAGE TO EXISTING UTILITIES SHALL BE REPAIRED BY THE CONTRACTOR AT HIS EXPENSE. CONTACT ALL POSSIBLE UTILITY AND UNDERGROUND FACILITY OWNERS.

LEGEND	
	3600 PSI CONCRETE PAVEMENT
	PROPOSED SIDEWALK
	PROPOSED ASPHALT PAVEMENT
W	EXISTING WATER LINE
SS	EXISTING SEWER LINE
---	R.O.W. LINE
---	LOT LINE
	FIRE HYDRANT
	STORM DRAIN INLET
	WATER VALVES
	DIRECTION OF FLOW
	EXISTING SIGN
OE	EXISTING OVERHEAD ELECTRIC
G	EXISTING UNDERGROUND GAS
	EXISTING WATER VALVE
UT	EXISTING UNDERGROUND TELEPHONE
TP	EXISTING ASPHALT PAVEMENT
	BARRIER FREE RAMP TO BE CONST. W/PROJECT
	INTERLOCKING PAVING STONES TO BE APPROVED BY CITY
	EXISTING TREE
	EXISTING TREE-LINE



LOT 1, BLOCK A  
AIMEE ADDITION  
CABINET D, PAGE 101  
P.R.R.C.T.

ADJUST S.S.  
M.H. TO GRADE

EXISTING  
21" RCP

LOT 1, BLOCK 1  
CEDAR GROVE CHRISTIAN CHURCH  
CABINET C, PAGE 353  
P.R.R.C.T.

LOT 1, BLOCK A  
ROCKWALL COUNTY LAW ENFORCEMENT CENTER  
CABINET C, PAGE 1  
P.R.R.C.T.

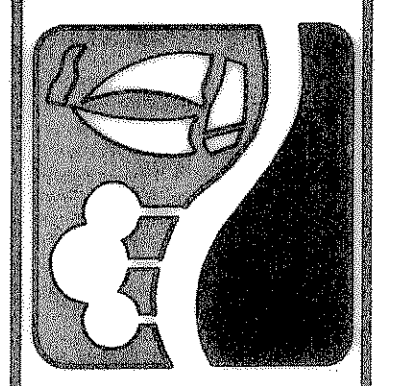
**RECORD  
DRAWING  
01/16/09**

NOTE: SEE PAVING PLAN & PROFILE SHEETS FOR GENERAL UTILITY LINE LOCATIONS AND OTHER INFORMATION.

MAX CROSS SLOPE FOR SIDEWALKS SHALL BE 2% AT ALL LOCATIONS INCLUDING ALL DRIVEWAY CROSSINGS.

**BENCHMARKS:**  
"C" CUT IN THE EAST END OF THE HEADWALL LOCATED ON THE NORTHWEST CORNER OF THE INTERSECTION OF BOYDSTUN STREET AND CLARK STREET.  
ELEVATION 534.21  
"D" CUT IN THE SOUTHWEST CORNER OF THE HEADWALL LOCATED ON THE WEST SIDE OF INDUSTRIAL BLVD, APPROXIMATELY 250± FEET NORTH OF THE INTERSECTION OF INDUSTRIAL AND THE I-30 ACCESS ROAD.  
ELEVATION 544.77

PREPARED BY:  
**VIA WIER & ASSOCIATES, INC.**  
ENGINEERS SURVEYORS LAND PLANNERS  
701 HIGHLANDER BLVD., SUITE 300 ARLINGTON, TEXAS 76015 METRO (817)467-7700  
6849 ELM STREET FRISCO, TEXAS 75034 METRO (214)387-8000  
www.wierassociates.com



**CITY OF ROCKWALL  
TOWNSEND BLVD  
DRIVEWAY PLAN FOR  
TOWNSEND BLVD  
FOR 905 TL TOWNSEND**  
(JUSTIN RD TO BOYDSTUN ST)  
(TOWNSEND BLVD TO CLARK ST)

**TOWNSEND BLVD  
DRIVEWAY PLAN FOR  
TOWNSEND BLVD  
FOR 905 TL TOWNSEND**

STATE OF TEXAS  
REGISTERED PROFESSIONAL ENGINEER  
RONALD RAMIREZ  
81821  
Copyright ©  
WIER & ASSOCIATES, INC.  
LAST SHEET EDIT  
DATE 01-19-2009  
WA# 04124  
**SHEET NO.  
P203**

FILE: DRIVES-PIH-04124.dwg  
TIME: 19:27