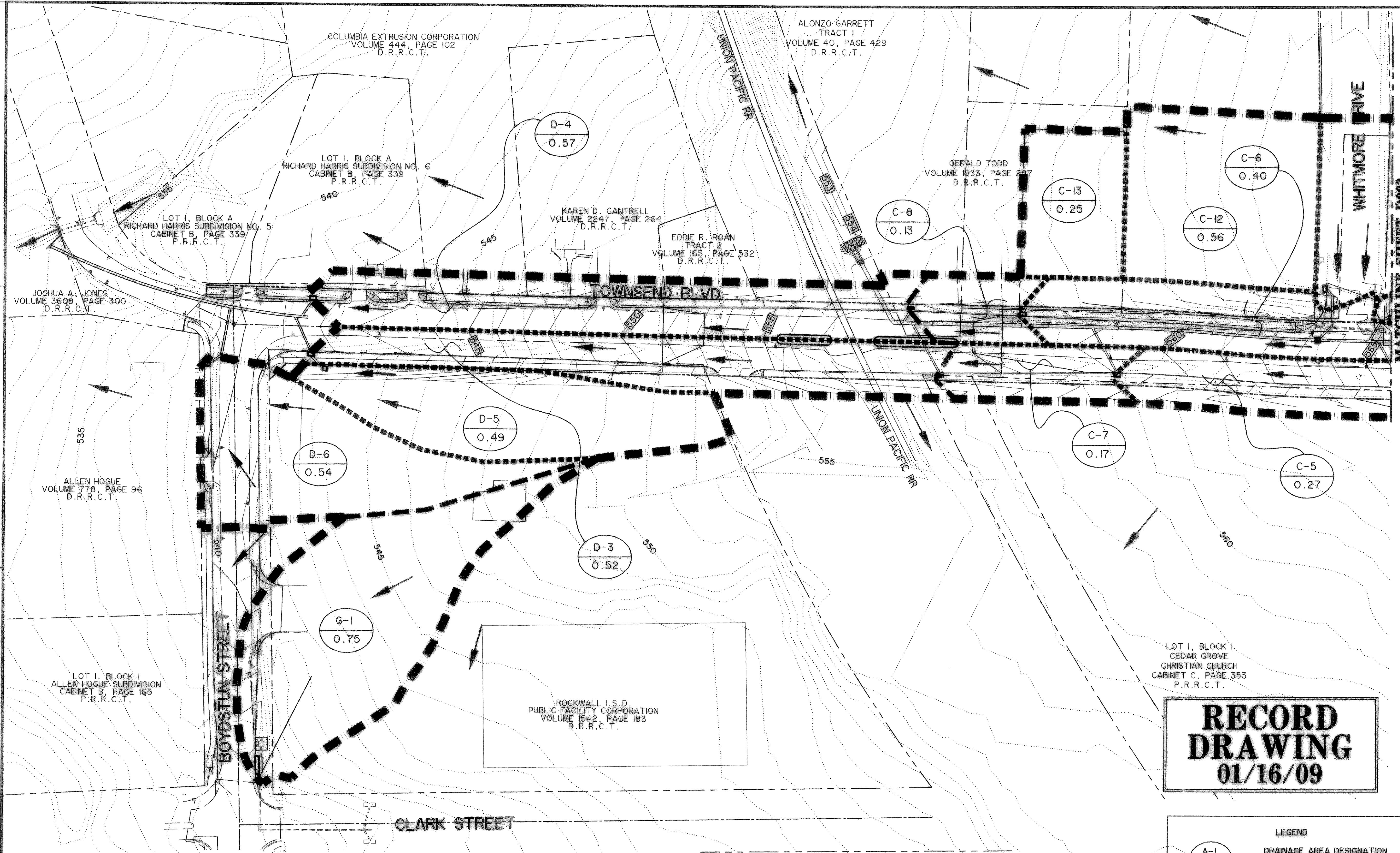


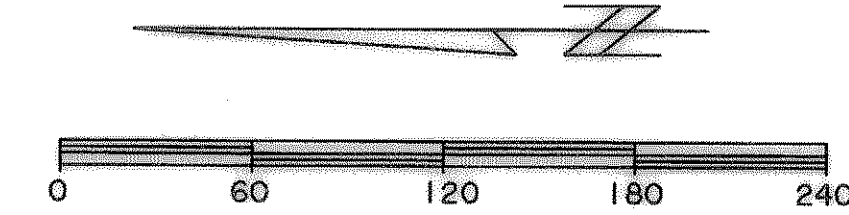
TIME: 13:55 FILE: D:\MAP1-phil-04124.dwg



MATCHLINE SHEET D002

**RECORD  
DRAWING**  
01/16/09

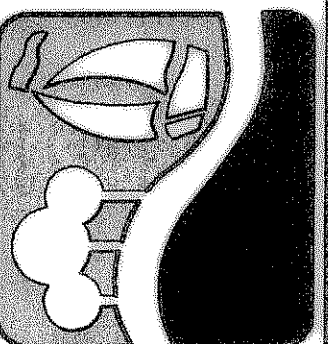
**NOTES:**  
 1. ALL SITES SHALL BE REQUIRED TO DETAIN TO EXISTING CONDITIONS (C=0.35) UPON DEVELOPMENT.  
 2. DRAINAGE AREA 'G-1' CURRENTLY DRAINS TO AN EXISTING DROP INLET, WHICH WILL BE REPLACED BY A CURB INLET WITH AN OPEN BACK TO CAPTURE EXISTING FLOW PATTERNS. DRAINAGE CALCULATIONS FOR THE EXISTING SYSTEM WERE NOT AVAILABLE.



**LEGEND**

	DRAINAGE AREA DESIGNATION FLOW IN CFS (100 YR)
	DRAINAGE AREA BOUNDARY
	MAJOR DRAINAGE AREA DIVIDE
	DRAINAGE AREA SUB DIVIDE
	DIRECTION OF FLOW

PREPARED BY:  
**WIA WIER & ASSOCIATES, INC.**  
 ENGINEERS SURVEYORS LAND PLANNERS  
 701 HIGHLANDER BLVD., SUITE 300 ARLINGTON, TEXAS 76015 METRO (817)467-7700  
 6849 ELM STREET FRISCO, TEXAS 75034 METRO (214)387-8000  
 www.wierassociates.com



**CITY OF ROCKWALL  
TOWNSEND BLVD  
(JUSTIN RD TO BOYDSTUN ST)  
& BOYDSTUN ST  
(TOWNSEND BLVD TO CLARK ST)**

**DRAINAGE AREA  
MAP**

STATE OF TEXAS  
 RONALD RAMIREZ  
 81821  
 REGISTERED PROFESSIONAL ENGINEER

*Ronald Ramirez*

COPYRIGHT ©  
 WIER & ASSOCIATES, INC.  
 LAST SHEET EDIT  
 DATE 01-19-2009  
 WA# 04124

**SHEET NO.  
D001**