

CITY OF ROCKWALL, TEXAS

CONSTRUCTION PLANS

FOR
PAVING, DRAINAGE & WATER IMPROVEMENTS
TO SERVE

TOWNSEND BOULEVARD (PHASE 2)

FROM JUSTIN ROAD TO BOYDSTUN STREET
& BOYDSTUN STREET
FROM TOWNSEND BLVD TO CLARK STREET

BILL CECIL - MAYOR

COUNCIL MEMBERS:

BOB COTTI - Mayor Pro Tem

STEPHEN STRAUGHAN

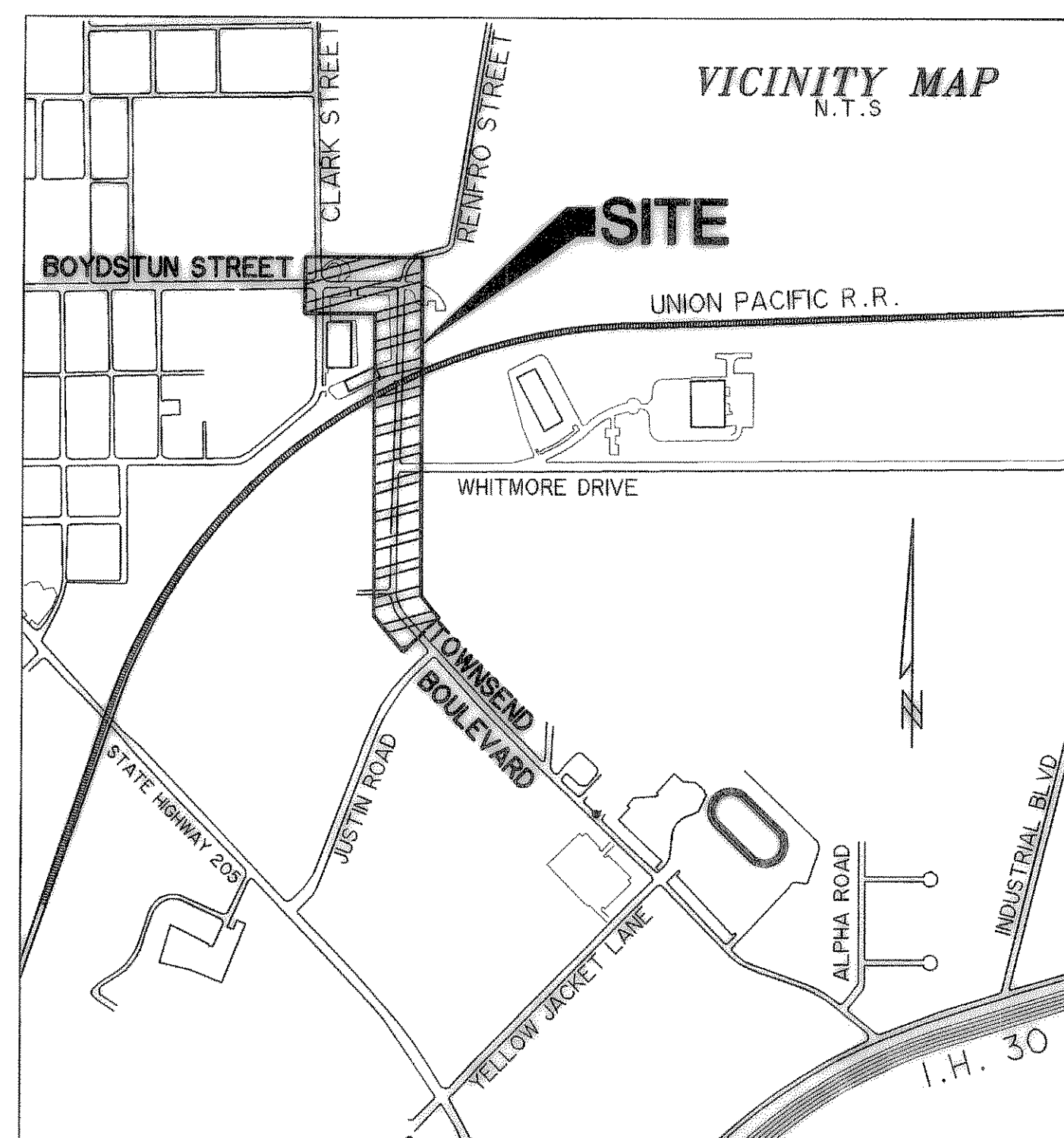
TIM McCALLUM

JOHN KING

MATT SCOTT

MARGO NIELSON

JULIE COUCH - City Manager



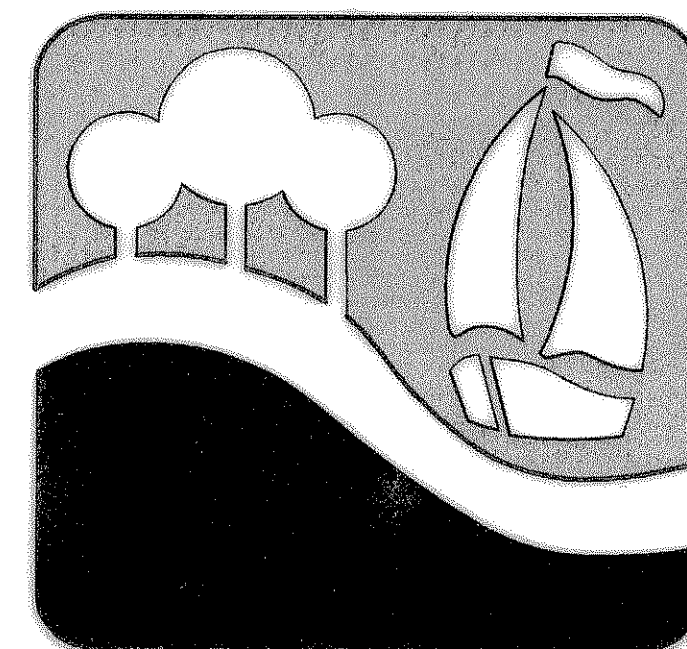
INDEX OF DRAWINGS

A100	COVER SHEET
A101	GENERAL NOTES
P001	PAVING DETAILS
P002	PAVING DETAILS
P003	TYPICAL SECTIONS
P101	TOWNSEND BLVD-PAVING PLAN AND PROFILE, STA 50+00 TO 51+40
P102	TOWNSEND BLVD-PAVING PLAN AND PROFILE, STA 45+50 TO 50+00
P103	TOWNSEND BLVD-PAVING PLAN AND PROFILE, STA 41+00 TO 45+50
P104	TOWNSEND BLVD-PAVING PLAN AND PROFILE, STA 37+00 TO 41+00
P105	TOWNSEND BLVD-PAVING PLAN AND PROFILE, STA 32+50 TO 37+00
P105.1	TOWNSEND BLVD-TRAFFIC BUTTON REPLACEMENT PLAN
P106	BOYDSTUN STREET-PAVING PLAN AND PROFILE, STA 1+00 TO 5+50
P201	DRIVEWAY PLAN - TOWNSEND BLVD (10-11, 14-17)
P202	DRIVEWAY PLAN - BOYDSTUN STREET (18-19)
P203	DRIVEWAY PLAN - TOWNSEND BLVD & WHITMORE DRIVE
P204	TOWNSEND BLVD-UNION PACIFIC RAILROAD CROSSING
P205	TOWNSEND BLVD-BOYDSTUN STREET INTERSECTION
D001	DRAINAGE AREA MAP
D002	DRAINAGE AREA MAP
D003	DRAINAGE AREA CALCULATIONS
D004	STORM DRAIN CALCULATIONS
D101	STORM DRAIN LINE 'C' STA 5+00 TO 10+21
D102	STORM DRAIN LINE 'C' STA 1+00 TO 5+00
D103	STORM DRAIN LINE 'D' STA 0+00 TO 4+62.09
D104	STORM DRAIN LATERAL PROFILES (C1-C6)
D105	STORM DRAIN LATERAL PROFILES (C7-C13)
D106	STORM DRAIN LATERAL PROFILES (D1-D6)
D107	STORM DRAIN LINE 'G' STA 0+00 TO 0+10.66
D108	STORM DRAIN LATERAL 'B-13'
D201	DITCH GRADING PLAN
D301	DRAINAGE DETAILS
D302	* TxDOT CH-PW-S HEADWALL
D303	* TxDOT MANHOLE - TYPE M
U101	WATER LINE 'A' PLAN AND PROFILE, STA 40+50 TO 45+50
U102	WATER LINE 'A' PLAN AND PROFILE, STA 36+00 TO 40+50
U103	WATER LINE 'A' PLAN AND PROFILE, STA 32+20.57 TO 36+00
H01	STREET LIGHT PLAN - SHEET 1
H02	STREET LIGHT PLAN - SHEET 2

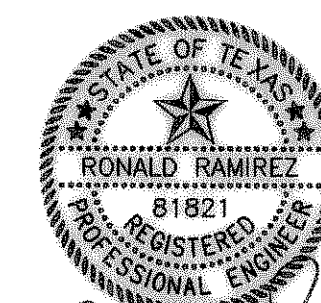
"THE STANDARD SHEETS, SPECIFICALLY IDENTIFIED IN THIS SHEET BY ASTERISK (*) HAVE BEEN SELECTED BY ME OR UNDER MY RESPONSIBLE SUPERVISION AS BEING APPLICABLE TO THIS PROJECT."

"SPECIFICATIONS ADOPTED BY THE TEXAS DEPARTMENT OF TRANSPORTATION, MARCH 1, 1993, AND SPECIFICATION ITEMS LISTED AND DATED AS FOLLOWS SHALL GOVERN ON THIS PROJECT. FOR ALL WORK WITHIN THE STATE RIGHT OF WAY"

"ALL CONSTRUCTION WITHIN THE STATE RIGHT OF WAY WILL REQUIRE COMPLIANCE TO TxDOT STANDARD SPECIFICATIONS, STANDARD PLANS, AND TEXAS MANUAL ON UNIFORM TRAFFIC CONTROL DEVICES."



"THE NEW HORIZON"
JANUARY 2009



Ronald Ramirez
1/22/09

**RECORD
DRAWING**
01/16/09