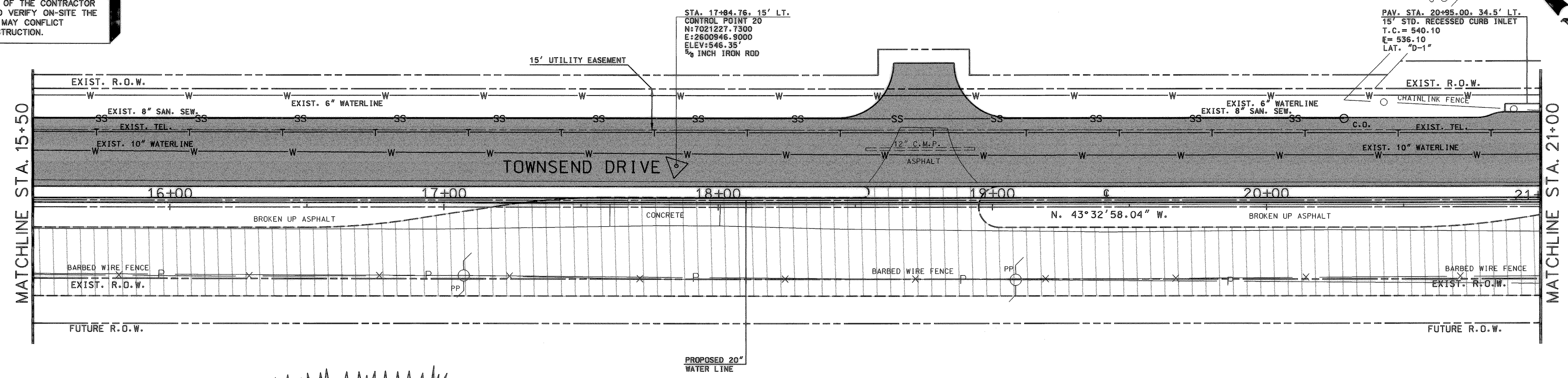
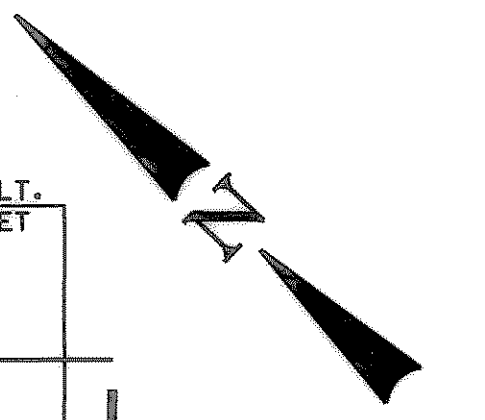
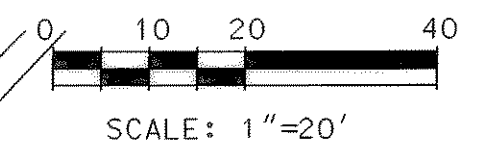


UNDERGROUND UTILITIES

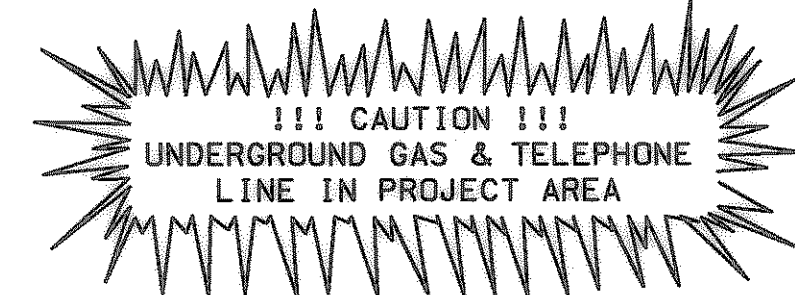
THE LOCATION OF EXISTING UTILITIES SHOWN ON THESE PLANS ARE APPROXIMATE AND BASED ON DATA FURNISHED BY UTILITY COMPANIES. IT IS THE RESPONSIBILITY OF THE CONTRACTOR TO LOCATE AND VERIFY ON-SITE THE UTILITIES THAT MAY CONFLICT WITH THE CONSTRUCTION.

BILL & JERRY FAMILY, TRUST
VOLUME 717, PAGE 136
D.R.R.C.T.



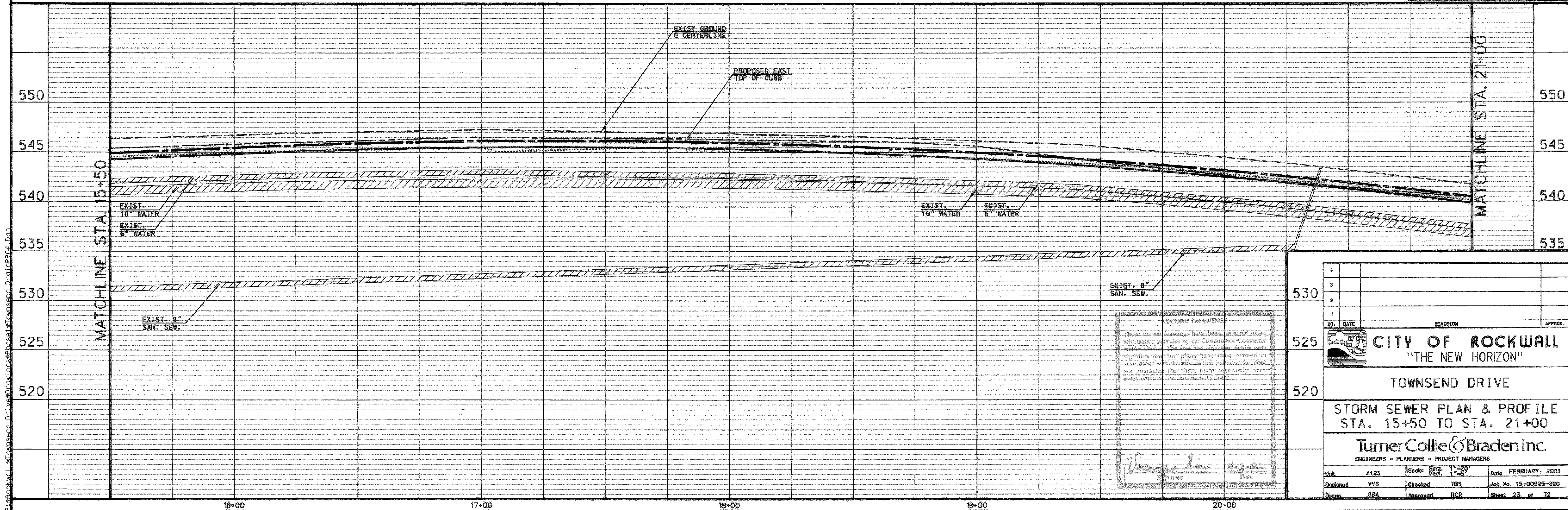
STA. 17+84.76 - 15' LT.
CONTROL POINT 20
N: 7021227.7300
E: 2600946.9000
ELEV: 546.35'
3/8 INCH IRON ROD

PAV. STA. 20+95.00, 34.5' LT.
15" STD. RECESSED CURB INLET
T.C. = 540.10
E = 536.10
LAT. "D-1"



CAMBRIDGE COMPANIES
VOLUME 108, PAGE 505
D.R.R.C.T.

- LEGEND**
- PROPOSED CONCRETE CONSTRUCTION
 - FUTURE CONSTRUCTION
 - FUTURE CURB



RECORD DRAWINGS

These record drawings have been prepared using information provided by the Contractor. The seal and signature below only signifies that the plans have been revised in accordance with the information provided and does not guarantee that these plans accurately show every detail of the constructed project.

Yorlanique V. Simon 4-2-01
Signature Date

NO.	DATE	REVISION	APPROV.
4			
3			
2			
1			

CITY OF ROCKWALL
"THE NEW HORIZON"

TOWNSEND DRIVE

STORM SEWER PLAN & PROFILE
STA. 15+50 TO STA. 21+00

TurnerCollie & Braden Inc.
ENGINEERS • PLANNERS • PROJECT MANAGERS

Unit	A123	Scale	Horz: 1"=20'	Vert: 1"=20'	Date	FEBRUARY, 2001
Designed	VVS	Checked	TBS	Job No.	15-00925-200	
Drawn	GBA	Approved	RCR	Sheet	23 of 72	

P:\Rockwall\Townsend_Dr\Drawings\Phase1\Townsend_Dr.dwg