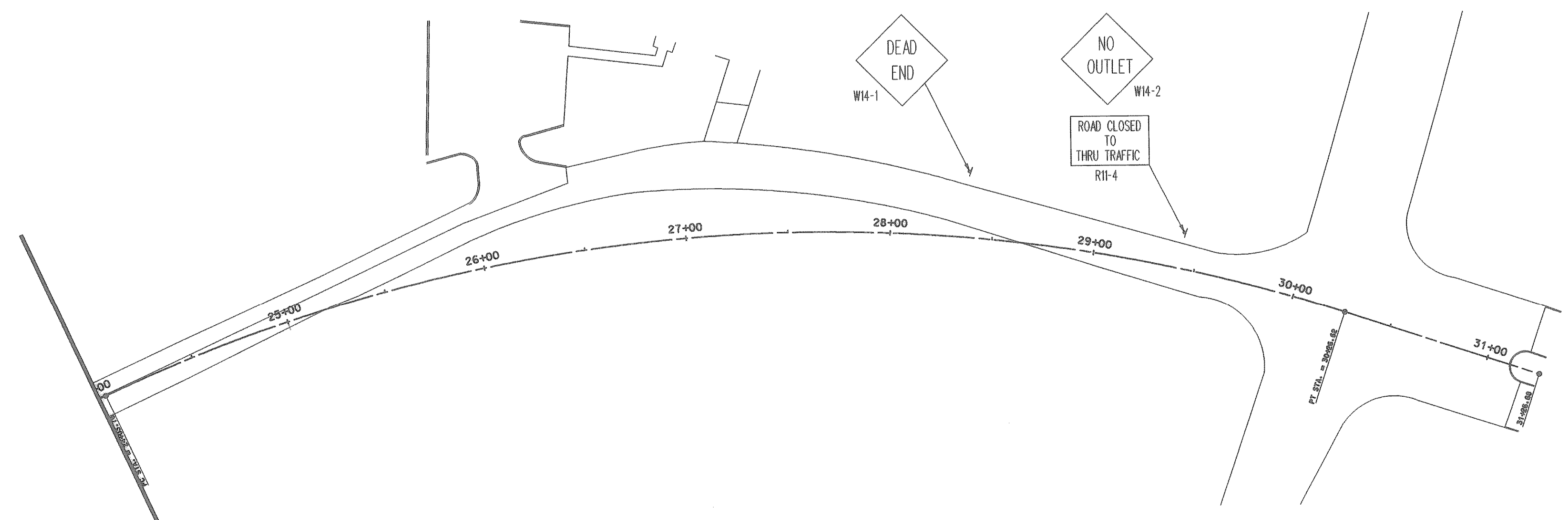


RECORD DRAWINGS

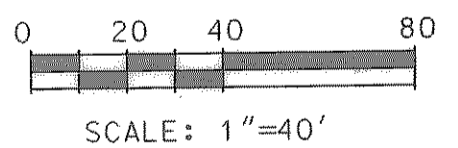
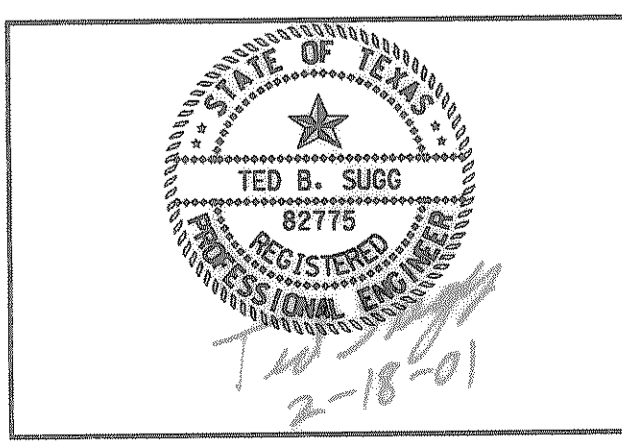
These record drawings have been prepared using information provided by the Construction Contractor and/or Owner. The seal and signature below only signifies that the plans have been revised in accordance with the information provided and does not guarantee that these plans accurately show every detail of the constructed project.

Vernique Lima 4-2-02
Signature Date



PHASE I

- LEGEND
- CONSTRUCTION THIS PHASE
 - CONSTRUCTION PREVIOUS PHASE



4				
3				
2				
1				
NO.	DATE	REVISION	APPROV.	
CITY OF ROCKWALL "THE NEW HORIZON"				
TOWNSEND DRIVE CONSTRUCTION PHASING - PHASE 1				
Turner Collie & Braden Inc. ENGINEERS • PLANNERS • PROJECT MANAGERS				
Unit	A125	Scale	Horz. 1"=40'	Date FEBRUARY, 2001
Designed	VVS	Checked	TBS	Job No. 15-00925-200
Drawn	GBA	Approved	RCR	Sheet 46 of 72

P:\rockwall\Townsend Drive\Drawings\Phase1\Townsend-Phase1.dwg