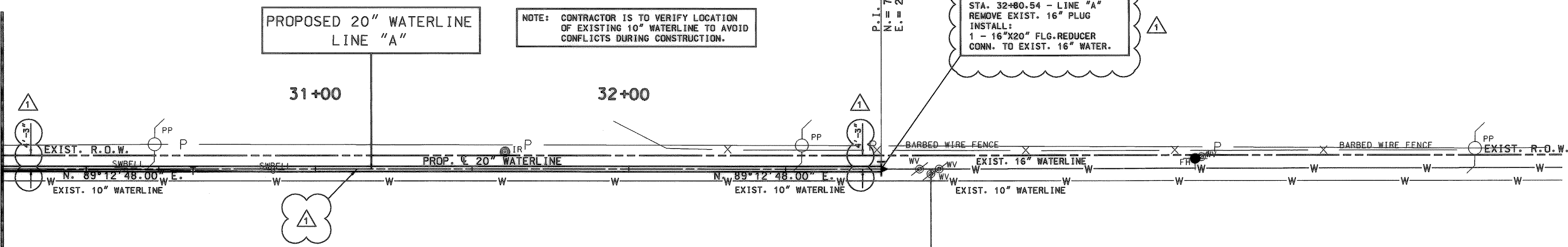
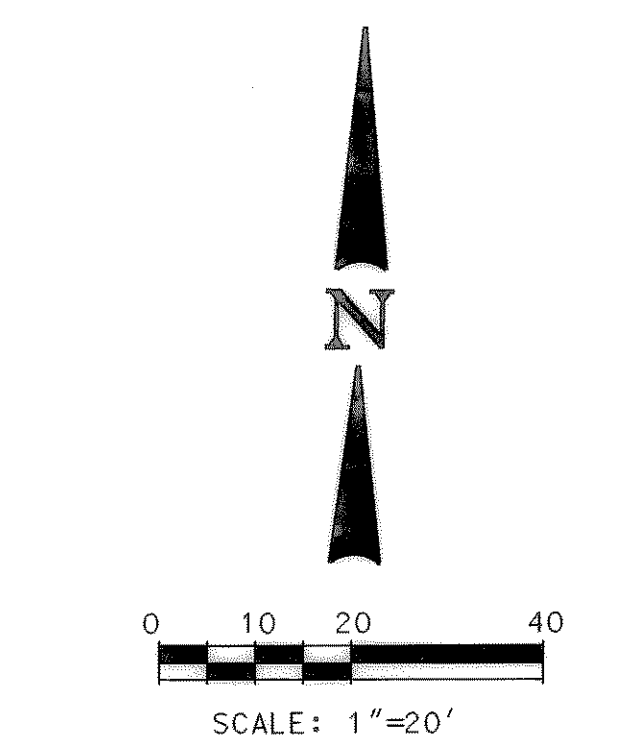


MATCHLINE STA. 30+00



NOTE: CONTRACTOR IS TO VERIFY LOCATION OF EXISTING 10" WATERLINE TO AVOID CONFLICTS DURING CONSTRUCTION.

STA. 32+80.54 - LINE "A"
REMOVE EXIST. 16" PLUG
INSTALL:
1 - 16"x20" FLG. REDUCER
CONN. TO EXIST. 16" WATER.

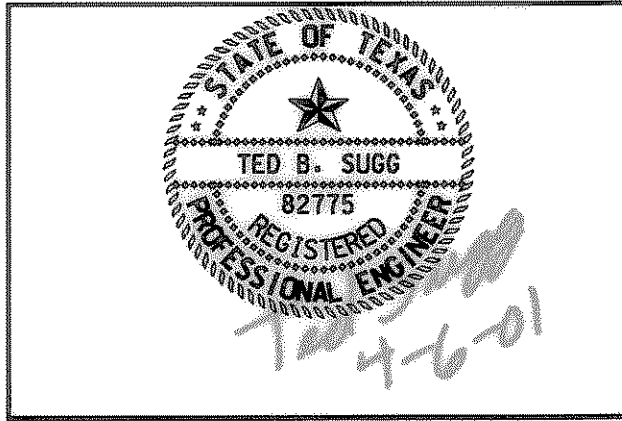


UNDERGROUND UTILITIES

THE LOCATION OF EXISTING UTILITIES SHOWN ON THESE PLANS ARE APPROXIMATE AND BASED ON DATA FURNISHED BY UTILITY COMPANIES. IT IS THE RESPONSIBILITY OF THE CONTRACTOR TO LOCATE AND VERIFY ON-SITE THE UTILITIES THAT MAY CONFLICT WITH THE CONSTRUCTION.

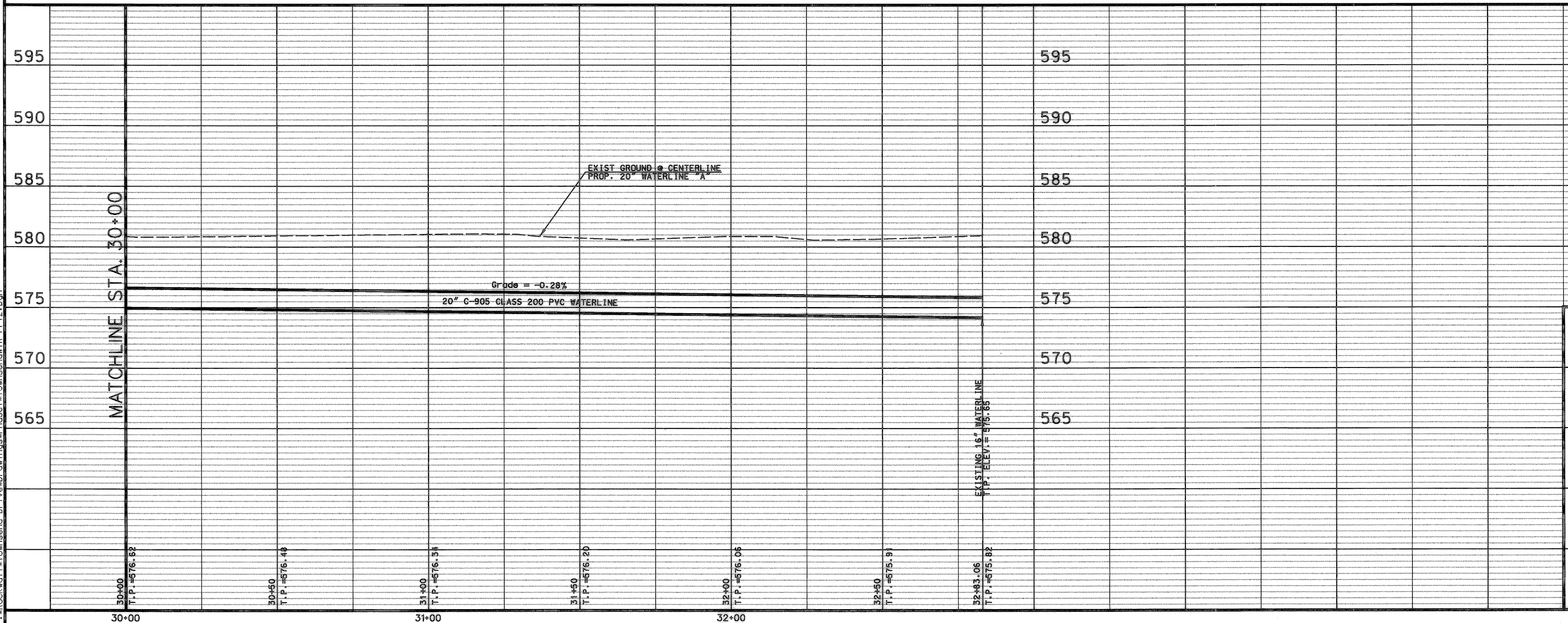
S.H. 276

!!! CAUTION !!!
UNDERGROUND GAS & TELEPHONE
LINE IN PROJECT AREA



These record drawings have been prepared using information furnished by the Construction Company and/or Owner. The seal and signature below only certify that the plans have been revised to conform with the information provided and that the preparer has taken every precaution to show every detail of the construction program.

[Signature] Date



4			
3			
2			
1	2/27	ADDENDUM - CHANGE OF HORZ. ALIGN. 20" WATERLINE	
NO.	DATE	REVISION	APPROV.

CITY OF ROCKWALL
"THE NEW HORIZON"

TOWNSEND DRIVE

20" WATERLINE - LINE "B"
STA. 30+00 TO STA. 32+80.54

Turner Collie & Braden Inc.
ENGINEERS • PLANNERS • PROJECT MANAGERS

Unit	A123	Scale: Horiz. 1"=20'	Date	FEBRUARY, 2001
Designed	VVS	Checked	TBS	Job No. 15-00925-200
Drawn	GBA	Approved	RCR	Sheet 42 of 72

P:\Rockwall\Townsend Drive\Drawings\Phase1\Townsend\WTR_PP12.dwg