

MATCHLINE STA. 25+00

MATCHLINE STA. 30+00

CAMBRIDGE COMPANIES
VOLUME 99, PAGE 1022
D.R.R.C.T.

STA. 25+96.29 - LINE "B"
INSTALL:
1 - 20" 45° BEND
N. = 7020341.95
E. = 2604202.22

PROPOSED 20" WATERLINE
LINE "A"

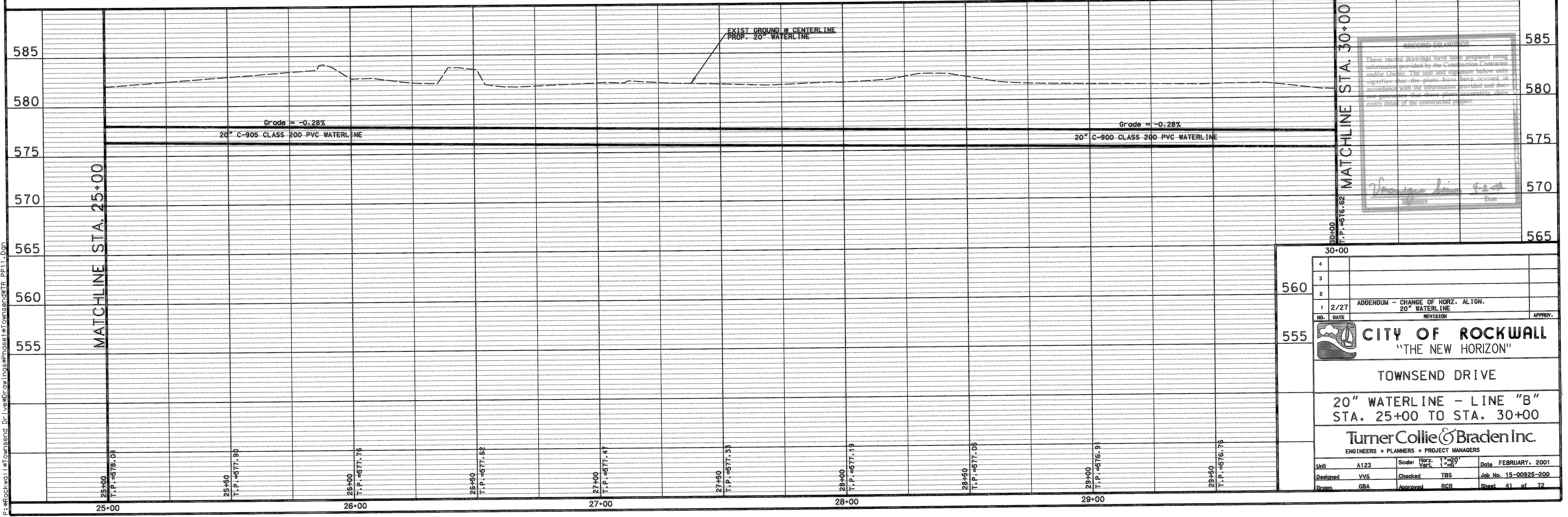
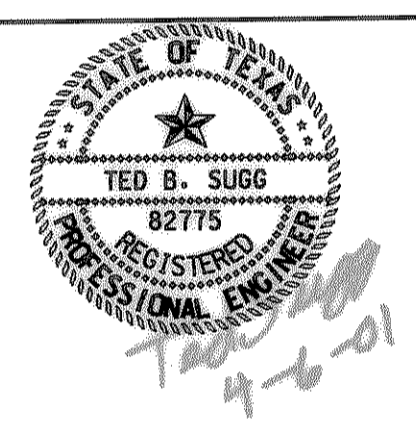
NOTE: CONTRACTOR IS TO VERIFY LOCATION
OF EXISTING 10" WATERLINE TO AVOID
CONFLICTS DURING CONSTRUCTION.

STA. 26+16.80 - LINE "B"
INSTALL:
1 - 20" 45° BEND
N. = 7020327.87
E. = 2604217.13

UNDERGROUND UTILITIES

THE LOCATION OF EXISTING UTILITIES
SHOWN ON THESE PLANS ARE APPROXIMATE
AND BASED ON DATA FURNISHED
BY UTILITY COMPANIES. IT IS THE
RESPONSIBILITY OF THE CONTRACTOR
TO LOCATE AND VERIFY ON-SITE THE
UTILITIES THAT MAY CONFLICT
WITH THE CONSTRUCTION.

!!! CAUTION !!!
UNDERGROUND GAS & TELEPHONE
LINE IN PROJECT AREA



These revised drawings have been prepared using information provided by the Construction Contractor and/or Owner. The seal and signature below only signify that the plans have been revised in accordance with the information provided and does not guarantee that these plans accurately show every detail of the constructed project.

Turner Collie & Braden Inc.
Signature: _____ Date: _____

4			
3			
2	2/27	ADDENDUM - CHANGE OF HORZ. ALIGN. 20" WATERLINE	
1			
NO.	DATE	REVISION	APPROV.
CITY OF ROCKWALL "THE NEW HORIZON" TOWNSEND DRIVE 20" WATERLINE - LINE "B" STA. 25+00 TO STA. 30+00 Turner Collie & Braden Inc. ENGINEERS • PLANNERS • PROJECT MANAGERS			
Unit	A123	Scale: Horz. 1"=20' Vert. 1"=5'	Date FEBRUARY, 2001
Designed	VVS	Checked TBS	Job No. 15-00925-200
Drawn	GBA	Approved RCR	Sheet 41 of 72

P:\rock\wa\1\Townsend Dr\1\view\Drawings\Phase1\Townsend\TR_PP11.dwg