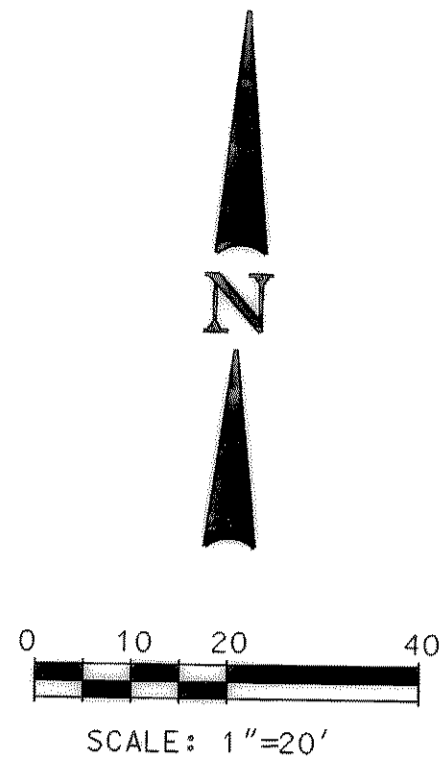
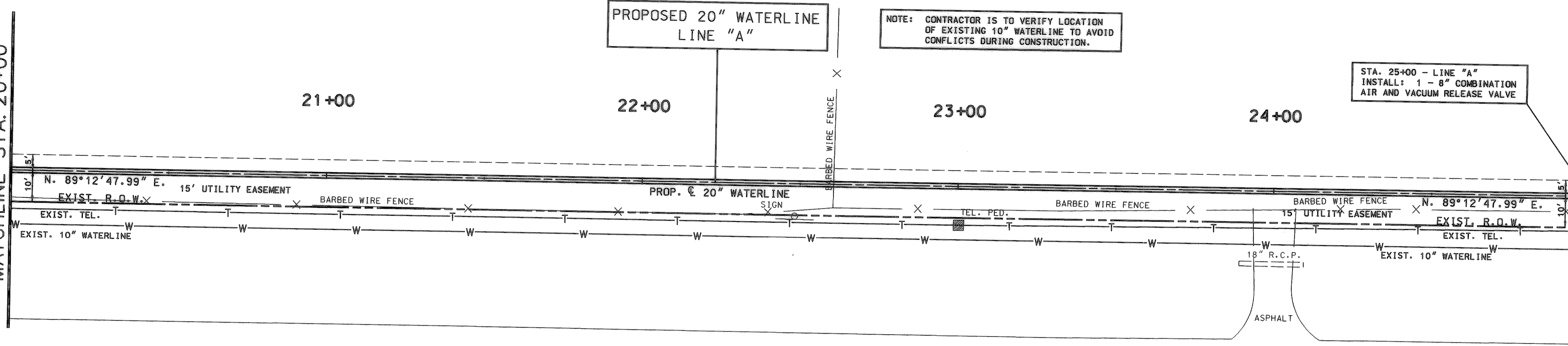


MATCHLINE STA. 20+00

MATCHLINE STA. 25+00

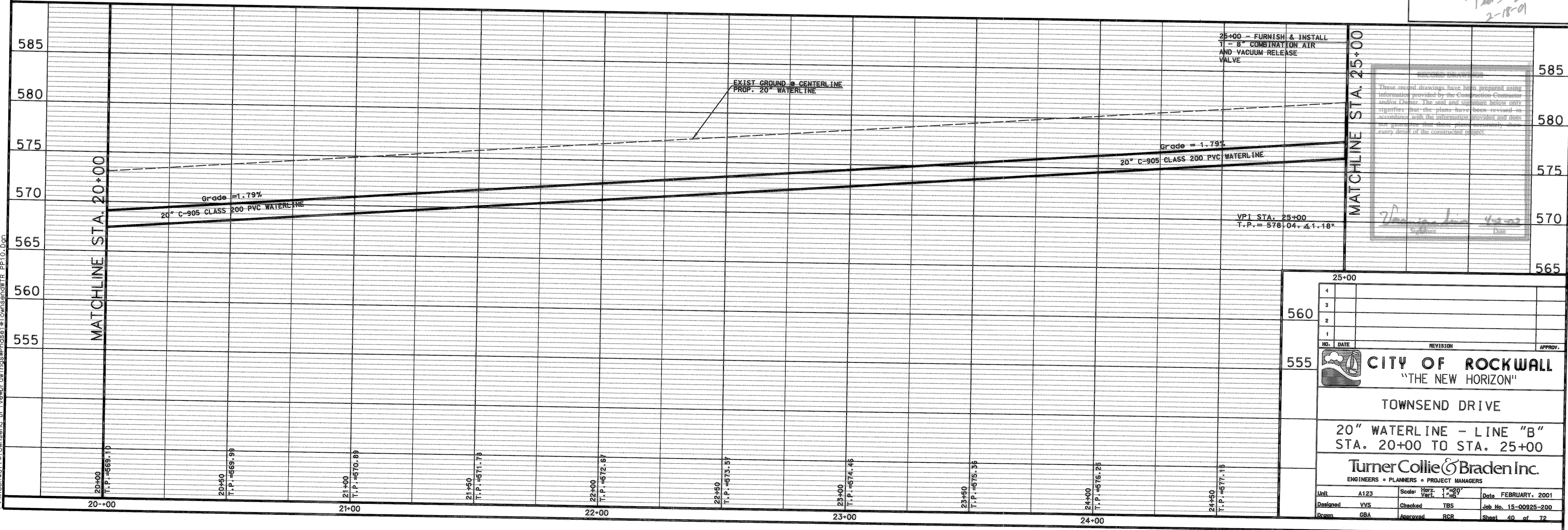
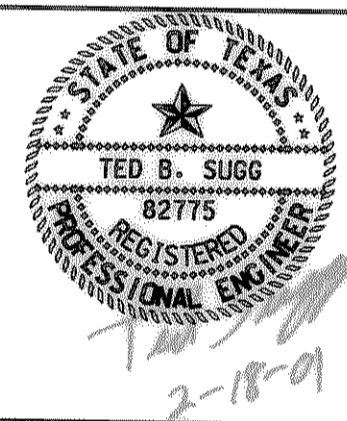
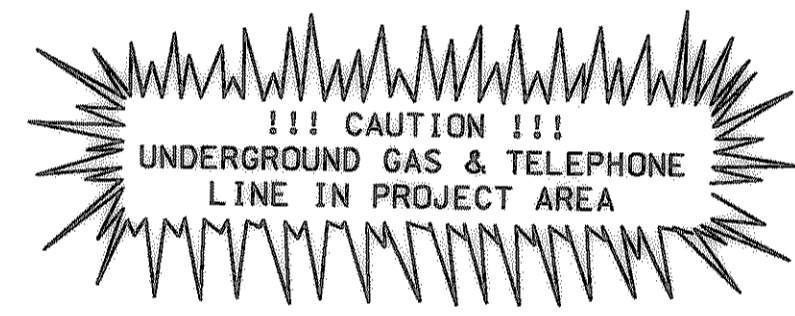


UNDERGROUND UTILITIES
THE LOCATION OF EXISTING UTILITIES SHOWN ON THESE PLANS ARE APPROXIMATE AND BASED ON DATA FURNISHED BY UTILITY COMPANIES. IT IS THE RESPONSIBILITY OF THE CONTRACTOR TO LOCATE AND VERIFY ON-SITE THE UTILITIES THAT MAY CONFLICT WITH THE CONSTRUCTION.

ASPHALT

ASPHALT

S.H. 276



These record drawings have been prepared using information provided by the Construction Commission and/or other sources. The seal and signature below only signifies that the plans have been reviewed in accordance with the information provided and does not guarantee that these plans accurately show every detail of the constructed project.

Signature *Date*

P:\Rockwall\Townsend_Dr\Drawings\Phase1\Townsend\WTR_PP10.dwg

4			
3			
2			
1			
NO.	DATE	REVISION	APPROV.
CITY OF ROCKWALL "THE NEW HORIZON"			
TOWNSEND DRIVE			
20" WATERLINE - LINE "B" STA. 20+00 TO STA. 25+00			
Turner Collie & Braden Inc. ENGINEERS • PLANNERS • PROJECT MANAGERS			
Unit	A123	Scale: Horiz. 1"=20' Vert. 1"=5'	Date FEBRUARY, 2001
Designed	VVS	Checked TBS	Job No. 15-00925-200
Drawn	GBA	Approved RCB	Sheet 40 of 72