

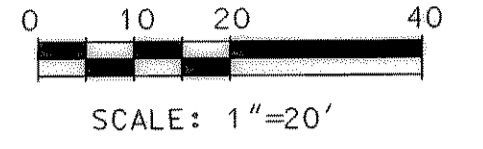
NOTE: CONTRACTOR IS TO VERIFY LOCATION OF EXISTING 10" WATERLINE TO AVOID CONFLICTS DURING CONSTRUCTION.

CAMBRIDGE COMPANIES  
VOLUME 99, PAGE 1022  
D.R.R.C.T.

PROPOSED 20" WATERLINE  
LINE "A"

!!! CAUTION !!!  
UNDERGROUND H.P. GAS LINE  
LINE IN PROJECT AREA

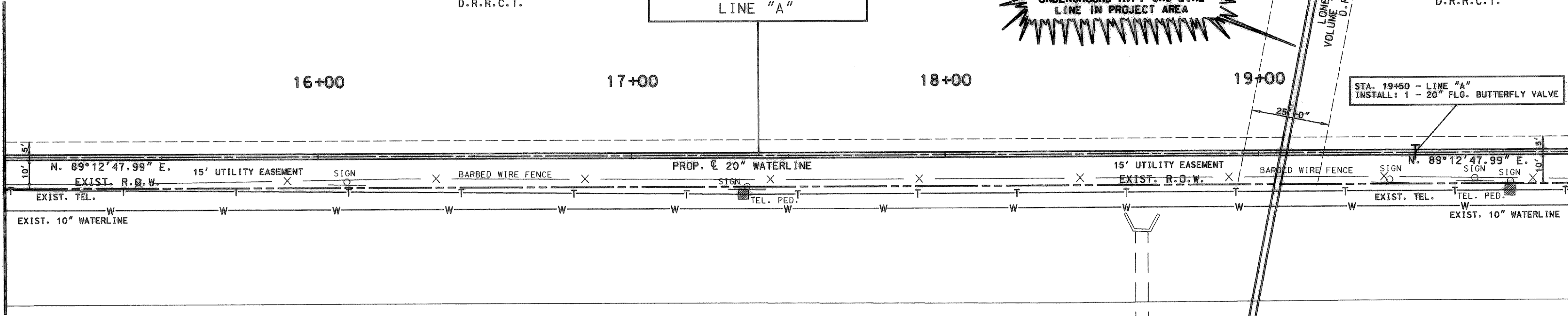
CAMBRIDGE COMPANIES  
VOLUME 99, PAGE 1022  
D.R.R.C.T.



**UNDERGROUND UTILITIES**  
THE LOCATION OF EXISTING UTILITIES SHOWN ON THESE PLANS ARE APPROXIMATE AND BASED ON DATA FURNISHED BY UTILITY COMPANIES. IT IS THE RESPONSIBILITY OF THE CONTRACTOR TO LOCATE AND VERIFY ON-SITE THE UTILITIES THAT MAY CONFLICT WITH THE CONSTRUCTION.

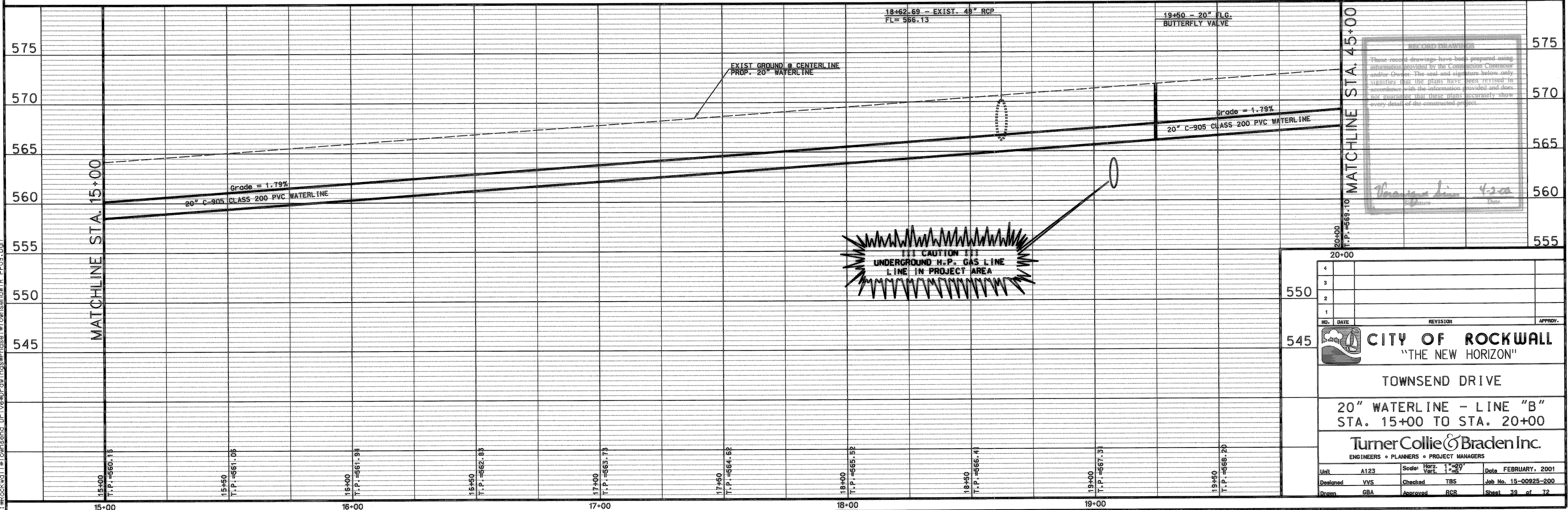
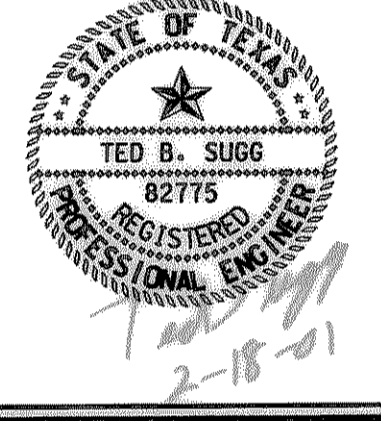
MATCHLINE STA. 15+00

MATCHLINE STA. 20+00



S.H. 276

!!! CAUTION !!!  
UNDERGROUND GAS & TELEPHONE  
LINE IN PROJECT AREA



RECORD DRAWINGS  
These record drawings have been prepared using information provided by the Contractor. The Contractor warrants that the plans have been revised in accordance with the information provided and does not warrant that these plans accurately show every detail of the constructed project.

*Signature* 4/20  
Date

|   |      |          |              |               |              |                |  |  |         |  |  |
|---|------|----------|--------------|---------------|--------------|----------------|--|--|---------|--|--|
| NO.   |      |          | DATE         |               |              | REVISION       |  |  | APPROV. |  |  |
| <b>CITY OF ROCKWALL</b><br>"THE NEW HORIZON"  |      |          |              |               |              |                |  |  |         |  |  |
| <b>TOWNSEND DRIVE</b><br><b>20" WATERLINE - LINE "B"</b><br><b>STA. 15+00 TO STA. 20+00</b> |      |          |              |               |              |                |  |  |         |  |  |
| <b>Turner Collie &amp; Braden Inc.</b><br>ENGINEERS • PLANNERS • PROJECT MANAGERS           |      |          |              |               |              |                |  |  |         |  |  |
| Unit  | A123 | Scale    | Vert. 1"=20' | Horiz. 1"=50' | Date         | FEBRUARY, 2001 |  |  |         |  |  |
| Designed  | YVS  | Checked  | TBS          | Job No.       | 15-00925-200 |                |  |  |         |  |  |
| Drawn   | GBA  | Approved | RGR          | Sheet         | 39 of 72     |                |  |  |         |  |  |

P:\Rockwall\Townsend Drive\Drawings\Project\Townsend\TR\_P08.dwg