

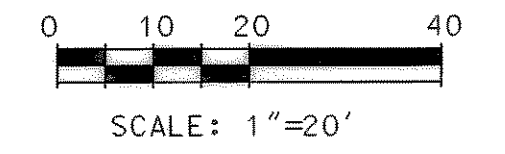
CLARA COX  
VOLUME 1571, PAGE 291  
D.R.R.C.T.

HOUSER ADDITION  
CABINET B, SIDE 175  
P.R.R.C.T.

STA. 6+65.24 - LINE "B"  
INSTALL:  
1 - 20" 45° BEND  
N. = 7020314.31  
E. = 2602271.38

PROPOSED 20" WATERLINE  
LINE "A"

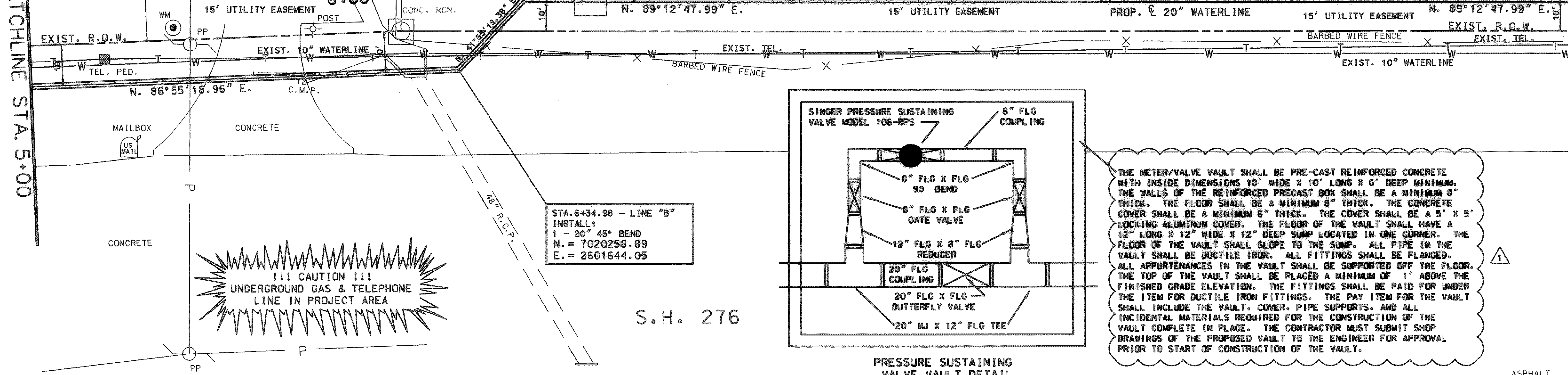
NOTE: CONTRACTOR IS TO VERIFY LOCATION  
OF EXISTING 10" WATERLINE TO AVOID  
CONFLICTS DURING CONSTRUCTION.



**UNDERGROUND UTILITIES**  
THE LOCATION OF EXISTING UTILITIES  
SHOWN ON THESE PLANS ARE APPROXI-  
MATE AND BASED ON DATA FURNISHED  
BY UTILITY COMPANIES. IT IS THE  
RESPONSIBILITY OF THE CONTRACTOR  
TO LOCATE AND VERIFY ON-SITE THE  
UTILITIES THAT MAY CONFLICT  
WITH THE CONSTRUCTION.

MATCHLINE STA. 5+00

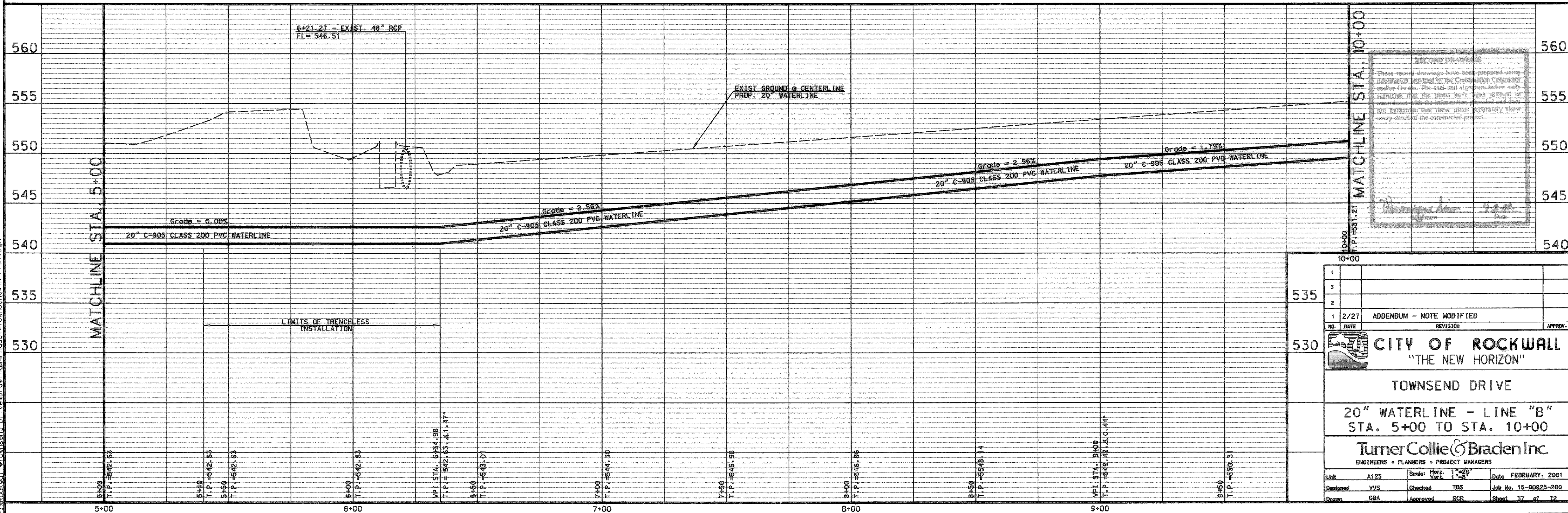
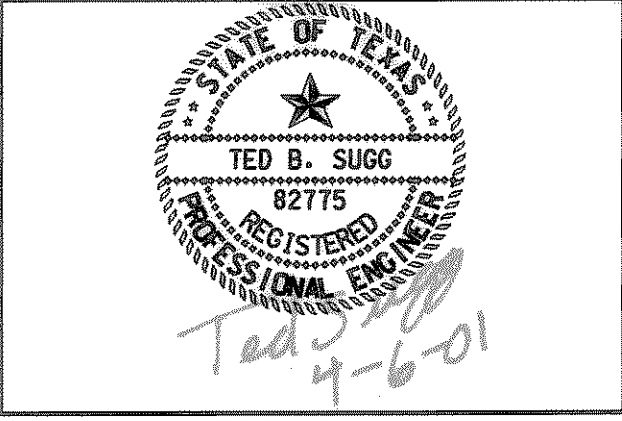
MATCHLINE STA. 10+00



STA. 6+34.98 - LINE "B"  
INSTALL:  
1 - 20" 45° BEND  
N. = 7020258.89  
E. = 2601644.05

S.H. 276

!!! CAUTION !!!  
UNDERGROUND GAS & TELEPHONE  
LINE IN PROJECT AREA



**RECORD DRAWINGS**  
These record drawings have been prepared using information provided by the Construction Contractor and/or Owner. The seal and signature below only signifies that the Plans have been reviewed in accordance with the information provided and does not guarantee that these plans accurately show every detail of the constructed product.

4			
3			
2			
1	2/27	ADDENDUM - NOTE MODIFIED	
NO.	DATE	REVISION	APPROV.
<b>CITY OF ROCKWALL</b> "THE NEW HORIZON" TOWNSEND DRIVE 20" WATERLINE - LINE "B" STA. 5+00 TO STA. 10+00 Turner Collie & Braden Inc. ENGINEERS • PLANNERS • PROJECT MANAGERS			
Unit	A123	Scale: Horiz. 1"=20'	Date FEBRUARY, 2001
Designed	VVS	Checked TBS	Job No. 15-00925-200
Drawn	GBA	Approved RCR	Sheet 37 of 72

P:\Rockwall\Townsend Drive\Drawings\Phase1\Townsend\WTR\_PP07.dgn