

STA. 16+95.38 - LINE "A"  
 INSTALL:  
 1 - 20"x6" TEE  
 1 - 6" FLG. GATE VALVE  
 1 - FIRE HYDRANT COMPLETE IN PLACE (BLOWOFF)

STA. 16+96.00 - LINE "A"  
 INSTALL:  
 1 - 1" COMBINATION AIR AND VACUUM RELEASE VALVE

BILL & JERRY FAMILY, TRUST  
 VOLUME 717, PAGE 136  
 D.R.R.C.T.

STA. 18+00, 19.5' LT. - 10" WATER  
 INSTALL:  
 1 - 10"x8" TAPPING SLEEVE & VALVE  
 1 - 8" FLG. PLUG  
 15 L.F. 8" WATERLINE

PROPOSED 20" WATERLINE  
 LINE "A"

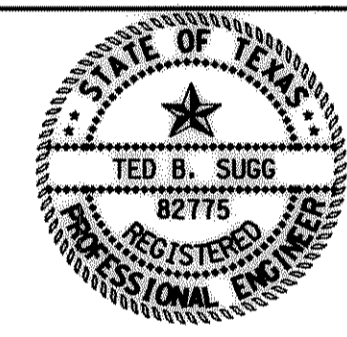
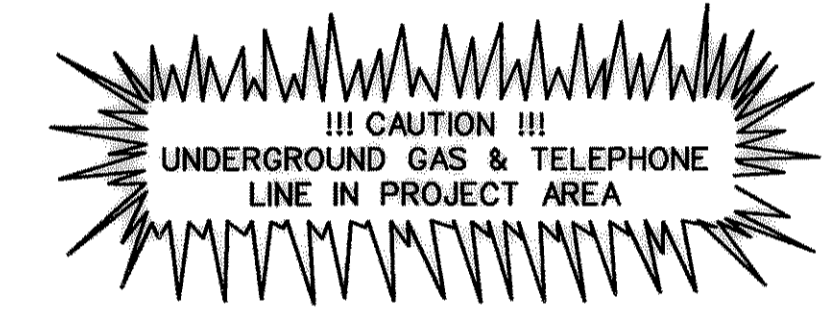
PAVING STA. 17+84.77, 15.09' LT.  
 CONTROL POINT 20  
 N: 7021227.7300  
 E: 2600946.9000  
 ELEV: 546.35'  
 5/8" INCH IRON ROD

- LEGEND**
- PROPOSED CONCRETE CONSTRUCTION
  - FUTURE CONSTRUCTION
  - FUTURE CURB

STA. 17+50 - LINE "A"  
 INSTALL: 1 - 20" FLG. BUTTERFLY VALVE

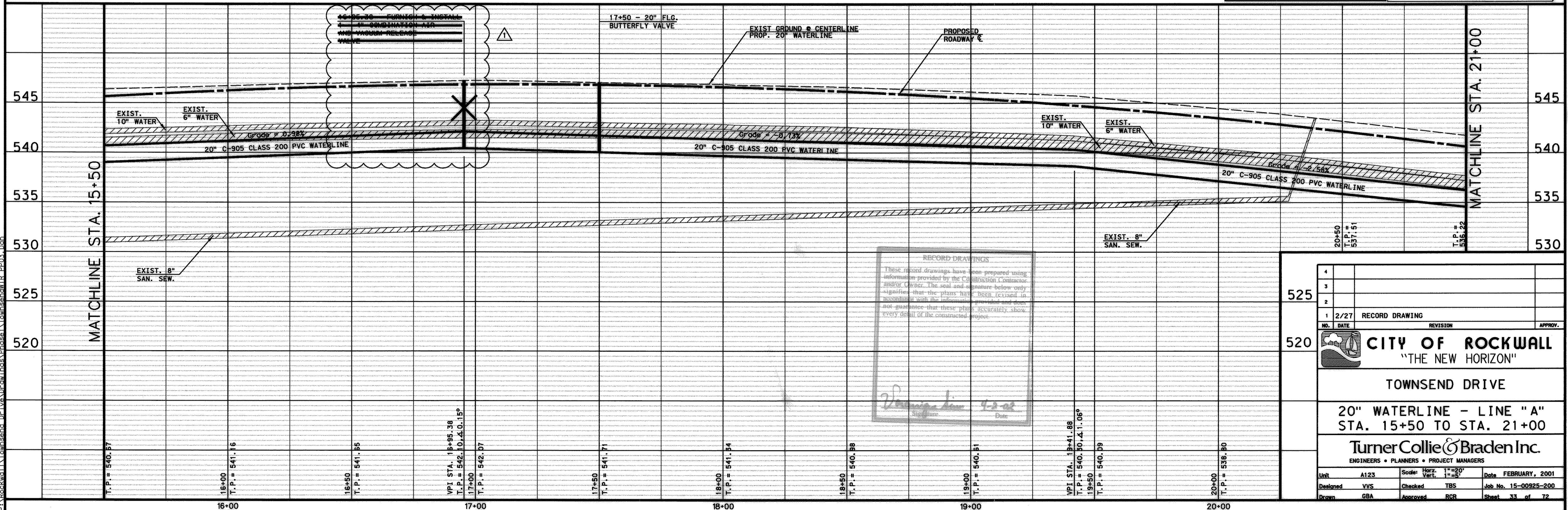
STA. 18+10, 19.5' LT. - 10" WATER  
 INSTALL:  
 1 - 10"x8" TAPPING SLEEVE & VALVE  
 30 L.F. 8" WATERLINE  
 1 - 8" FLG. PLUG

CAMBRIDGE COMPANIES  
 VOLUME 105, PAGE 505  
 D.R.R.C.T.



**UNDERGROUND UTILITIES**

THE LOCATION OF EXISTING UTILITIES SHOWN ON THESE PLANS ARE APPROXIMATE AND BASED ON DATA FURNISHED BY UTILITY COMPANIES. IT IS THE RESPONSIBILITY OF THE CONTRACTOR TO LOCATE AND VERIFY ON-SITE THE UTILITIES THAT MAY CONFLICT WITH THE CONSTRUCTION.



**RECORD DRAWINGS**

These record drawings have been prepared using information provided by the Commission Contractor and/or Owner. The seal and signature below only signifies that the plans have been revised in accordance with the information provided and does not guarantee that these plans accurately show every detail of the constructed project.

*Turner Collie & Braden Inc.*  
 Date: 4-2-02

4			
3			
2			
1	2/27	RECORD DRAWING	
NO.	DATE	REVISION	APPROV.
<b>CITY OF ROCKWALL</b> "THE NEW HORIZON"			
TOWNSEND DRIVE			
20" WATERLINE - LINE "A" STA. 15+50 TO STA. 21+00			
<b>Turner Collie &amp; Braden Inc.</b> ENGINEERS • PLANNERS • PROJECT MANAGERS			
Unit	A123	Scale: Horz. 1"=20' Vert. 1"=5'	Date: FEBRUARY, 2001
Designed	YVS	Checked: TBS	Job No. 15-00925-200
Drawn	GBA	Approved: RGR	Sheet 33 of 72

P:\Rockwall\Townsend\_Drive\Drawings\Phase1\Townsend\TR\_PP03.dwg