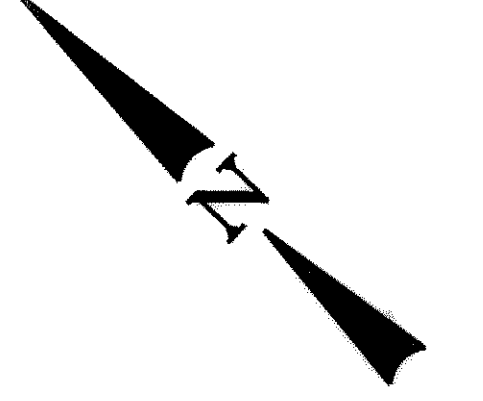
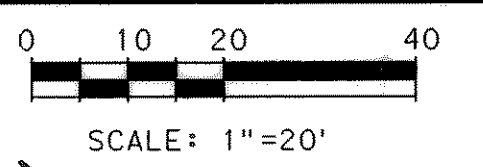


LOT 4
CITY OF ROCKWALL
VOLUME 364, PAGE 25
D.R.R.C.T.

STA. 7+00, 2.5' LT. - LINE "A"
INSTALL:
1 - 20" COMBINATION
AIR AND VACUUM RELEASE VALVE

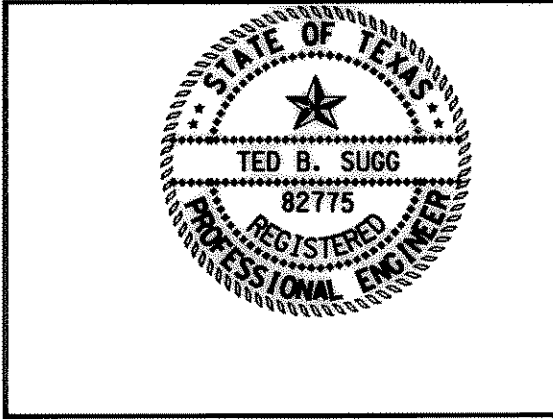
STA. 8+50, 2.5' LT. - LINE "A"
INSTALL:
1 - 20" COMBINATION
AIR AND VACUUM RELEASE VALVE

STA. 9+00, 22.5' LT. - 10" WATER
INSTALL:
1 - 10"X8" TAPPING SLEEVE & VALVE
1 - 8"X8" FLG. TEE
1 - FIRE HYDRANT COMPLETE IN PLACE
1 - 6" FLG. GATE VALVE
1 - 8" FLG. PLUG
20 L.F. 8" WATERLINE



UNDERGROUND UTILITIES

THE LOCATION OF EXISTING UTILITIES SHOWN ON THESE PLANS ARE APPROXIMATE AND BASED ON DATA FURNISHED BY UTILITY COMPANIES. IT IS THE RESPONSIBILITY OF THE CONTRACTOR TO LOCATE AND VERIFY ON-SITE THE UTILITIES THAT MAY CONFLICT WITH THE CONSTRUCTION.



WATERLINE STA. 5+56.56 - LINE "A" = PAVING STA. 5+56.56, 2.5' LT.
INSTALL: 1 - 20" FLG-MJ GATE VALVE
CONNECT PROP. 20" PVC WATERLINE TO EXIST. 36" RCPC WATERLINE
SEE CONNECTION NOTE.

CONNECTION NOTE:
CONTRACTOR IS TO CONNECT PROP. 20" PVC WATERLINE TO EXISTING 36" RCPC WATERLINE. CONNECTION IS TO BE PERFORMED BY HANSON PIPE ONLY. THE CONNECTION WILL BE REQUIRED TO BE MADE ON THE WEEKEND DURING THE NIGHT HOURS. CONNECTION TIME MUST BE COORDINATED WITH AND APPROVED BY THE CITY.

PROPOSED 20" WATERLINE LINE "A"

LEGEND

PROPOSED CONCRETE CONSTRUCTION

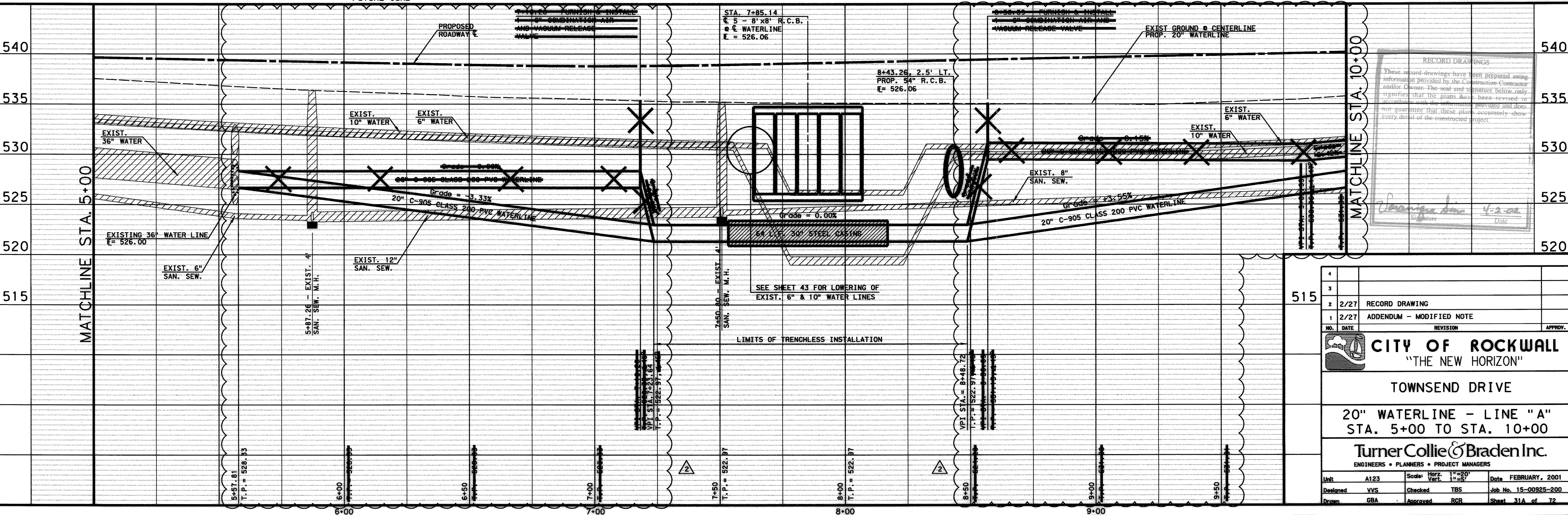
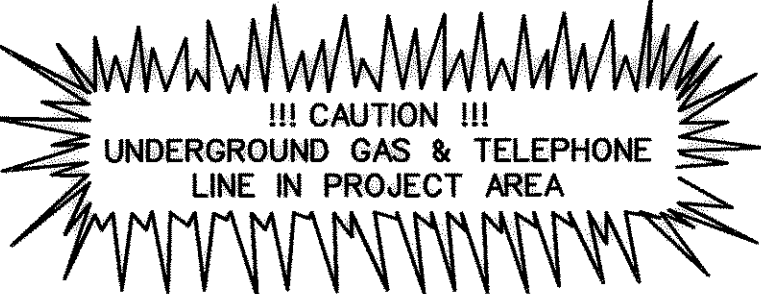
FUTURE CONSTRUCTION

FUTURE CURB

PAVING STA. 6+90.42, 5.86' RT.
CONTROL POINT 1978
N=7022068.4600
E=2600177.1400
ELEV=535.33
60D NAIL

CAMBRIDGE COMPANIES
VOLUME 105, PAGE 505
D.R.R.C.T.

STA. 9+10, 22.5' LT. - 10" WATER
INSTALL:
1 - 10"X8" TAPPING SLEEVE & VALVE
30 L.F. 8" WATERLINE
1 - 8" FLG. PLUG



RECORD DRAWINGS

These record drawings have been prepared using information provided by the Construction Contractor and/or Owner. The seal and signature below only signifies that the plans have been revised in accordance with the information received and does not guarantee that these plans accurately show every detail of the constructed project.

Signature Date

4				
3				
2	2/27	RECORD DRAWING		
1	2/27	ADDENDUM - MODIFIED NOTE		
NO.	DATE	REVISION	APPROV.	
CITY OF ROCKWALL "THE NEW HORIZON"				
TOWNSEND DRIVE				
20" WATERLINE - LINE "A" STA. 5+00 TO STA. 10+00				
TurnerCollie & Braden Inc. ENGINEERS • PLANNERS • PROJECT MANAGERS				
Unit	A123	Scale: Horiz. 1"=20' Vert. 1"=5'	Date	FEBRUARY, 2001
Designed	VVS	Checked	TBS	Job No. 15-00925-200
Drawn	GBA	Approved	RGR	Sheet 31A of 72

P:\Rockwall\Townsend Dr Live\Draw\Inss\Phase1\TownsendWTR EP01A.Dwg