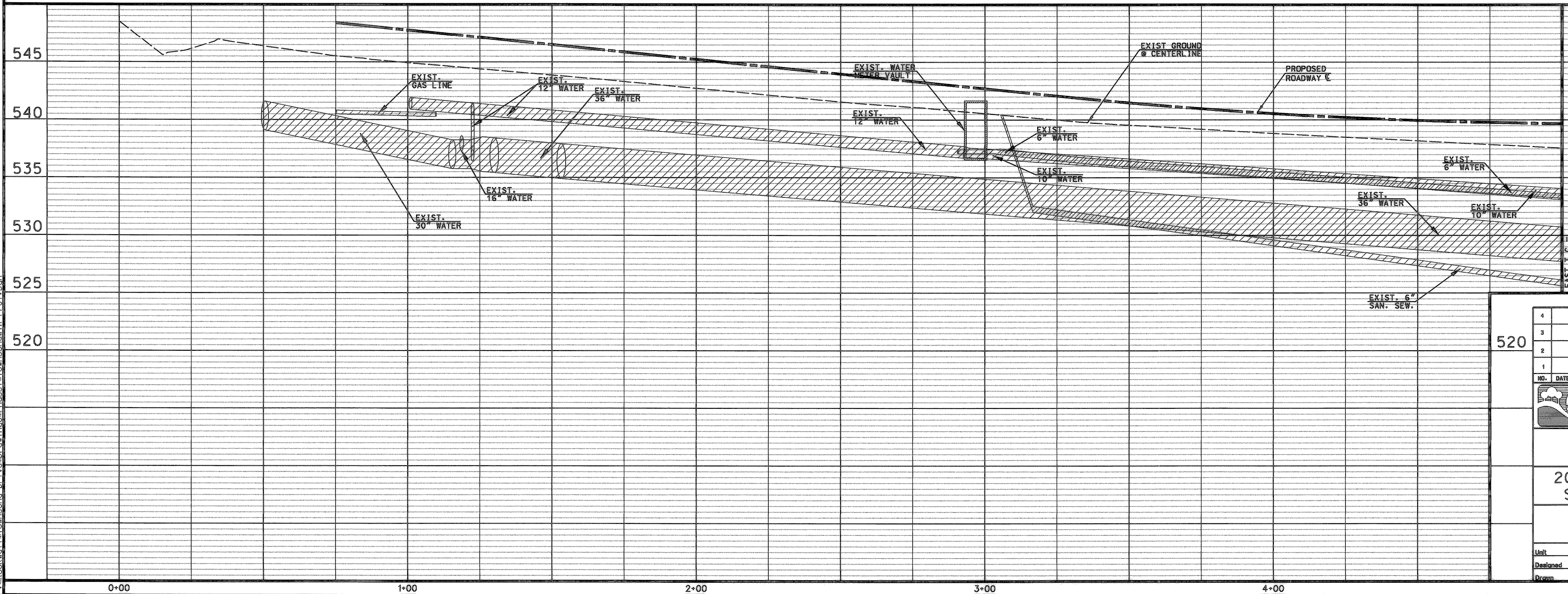
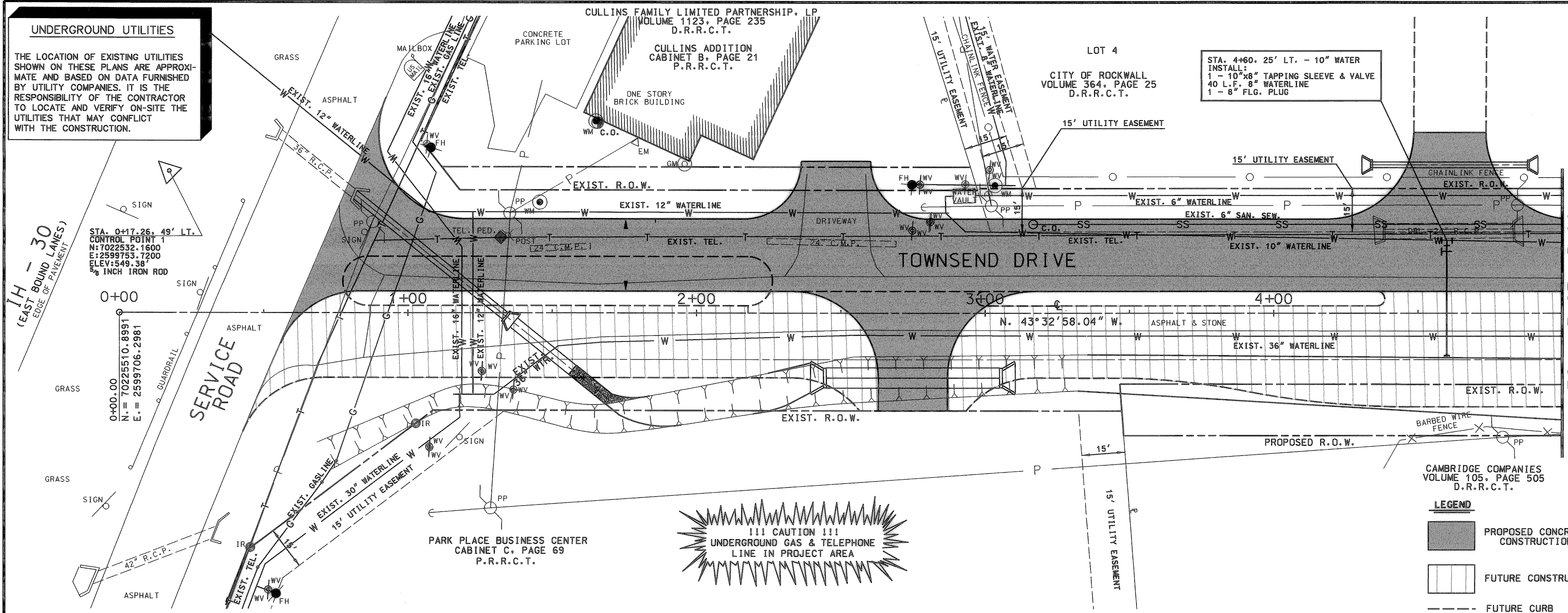
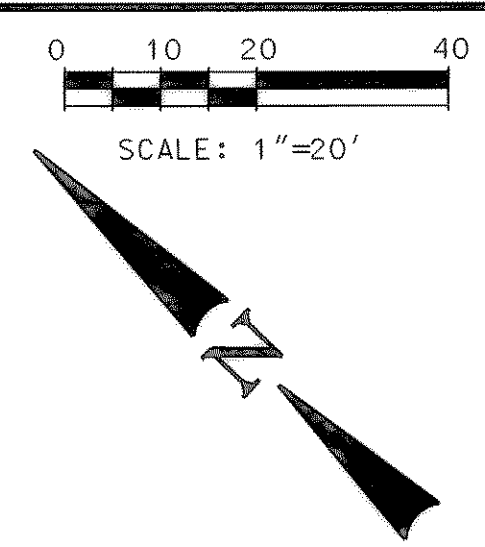


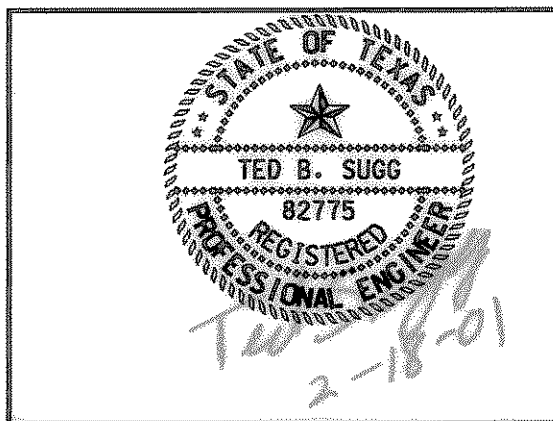
UNDERGROUND UTILITIES

THE LOCATION OF EXISTING UTILITIES SHOWN ON THESE PLANS ARE APPROXIMATE AND BASED ON DATA FURNISHED BY UTILITY COMPANIES. IT IS THE RESPONSIBILITY OF THE CONTRACTOR TO LOCATE AND VERIFY ON-SITE THE UTILITIES THAT MAY CONFLICT WITH THE CONSTRUCTION.



LEGEND

[Symbol]	POWER POLE
[Symbol]	GUY WIRE
[Symbol]	TELEPHONE BOX
[Symbol]	POST
[Symbol]	SIGN
[Symbol]	IRON ROD
[Symbol]	FIRE HYDRANT
[Symbol]	WATER METER
[Symbol]	MAILBOX
[Symbol]	WATER METER
[Symbol]	GAS METER
[Symbol]	CHAIN LINK FENCE
[Symbol]	WOOD FENCE
[Symbol]	BARBED WIRE FENCE
[Symbol]	APPROXIMATE TELEPHONE LINE
[Symbol]	APPROXIMATE GAS LINE
[Symbol]	APPROXIMATE WATER LINE
[Symbol]	OVERHEAD POWER LINE



RECORD DRAWINGS

These record drawings have been prepared using information provided by the Construction Contractor and/or Owner. The seal and signature below certify that the plans have been reviewed in accordance with the information provided and does not constitute that these plans accurately show every detail of the constructed project.

Ted B. Sugg
Signature Date

4			
3			
2			
1			
NO.	DATE	REVISION	APPROV.

CITY OF ROCKWALL
"THE NEW HORIZON"

TOWNSEND DRIVE

20" WATERLINE - LINE "A"
STA. 0+00 TO STA. 5+00

TurnerCollie & Braden Inc.
ENGINEERS • PLANNERS • PROJECT MANAGERS

Unit	A123	Scale	Horz. 1"=20'	Vert. 1"=5'	Date	FEBRUARY, 2001
Designed	VVS	Checked	TBS		Job No.	15-00925-200
Drawn	GBA	Approved	RCR		Sheet	31 of 72

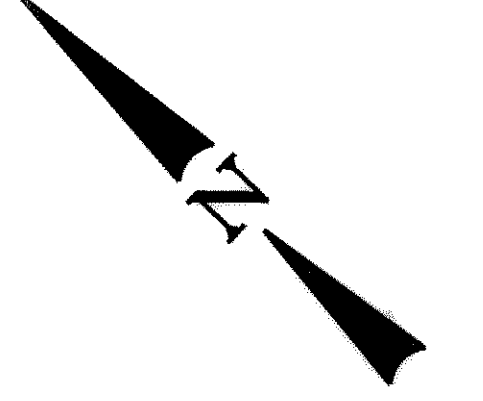
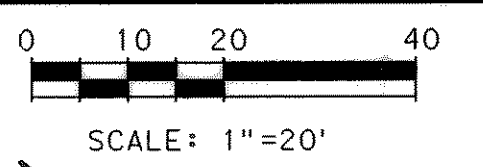
P:\Rockwall\Townsend_Dr.\ves@rockwall\Phase1\Townsend\WTR_PP01.dgn

LOT 4
CITY OF ROCKWALL
VOLUME 364, PAGE 25
D.R.R.C.T.

STA. 7+10.26, 2.5' LT. LINE "A"
INSTALL:
1 - 8" FLG. TEE
1 - 6" FLG. GATE VALVE
1 - 8" FLG. PLUG
20 L.F. 8" WATERLINE

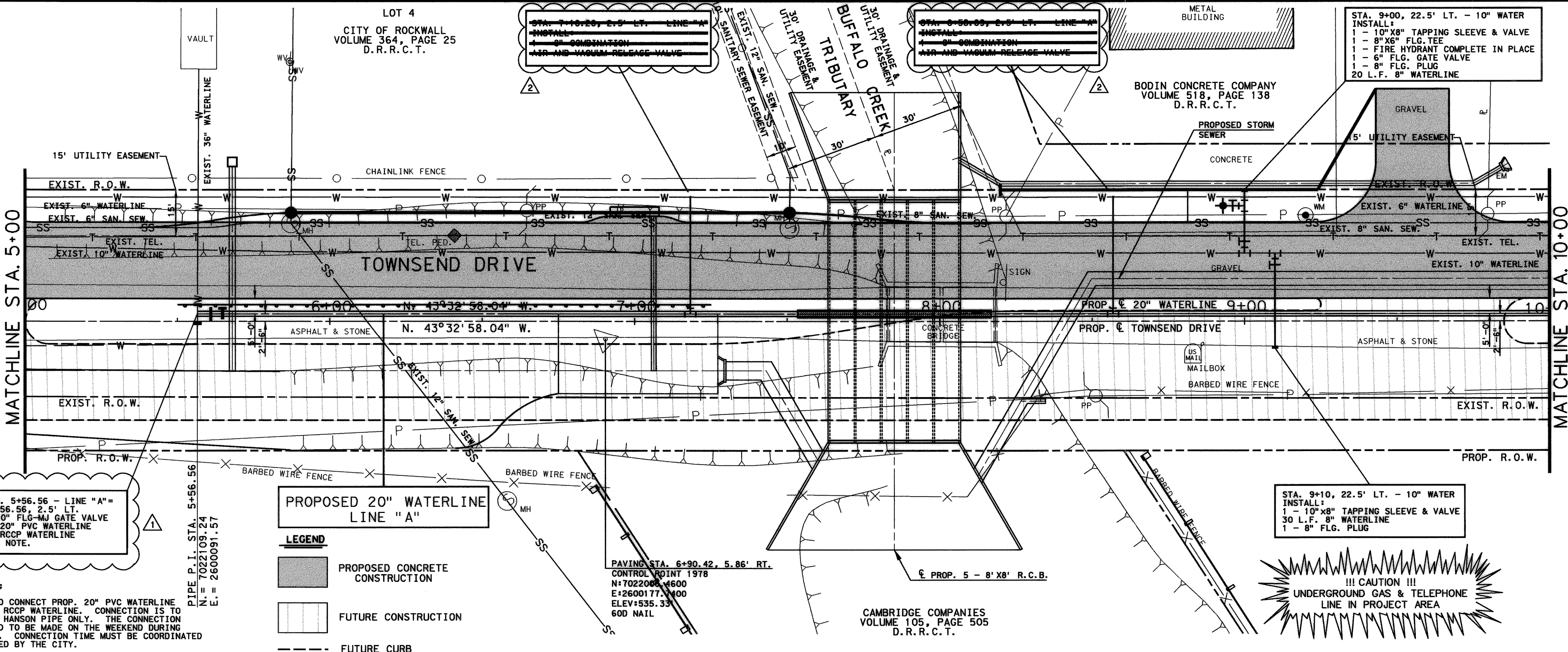
STA. 9+00, 22.5' LT. - 10" WATER
INSTALL:
1 - 10"X8" TAPPING SLEEVE & VALVE
1 - 8"X6" FLG. TEE
1 - FIRE HYDRANT COMPLETE IN PLACE
1 - 6" FLG. GATE VALVE
1 - 8" FLG. PLUG
20 L.F. 8" WATERLINE

STA. 9+10, 22.5' LT. - 10" WATER
INSTALL:
1 - 10"X8" TAPPING SLEEVE & VALVE
30 L.F. 8" WATERLINE
1 - 8" FLG. PLUG



MATCHLINE STA. 5+00

MATCHLINE STA. 10+00



UNDERGROUND UTILITIES

THE LOCATION OF EXISTING UTILITIES SHOWN ON THESE PLANS ARE APPROXIMATE AND BASED ON DATA FURNISHED BY UTILITY COMPANIES. IT IS THE RESPONSIBILITY OF THE CONTRACTOR TO LOCATE AND VERIFY ON-SITE THE UTILITIES THAT MAY CONFLICT WITH THE CONSTRUCTION.

WATERLINE STA. 5+56.56 - LINE "A" = PAVING STA. 5+56.56, 2.5' LT. INSTALL: 1 - 20" FLG-MJ GATE VALVE CONNECT PROP. 20" PVC WATERLINE TO EXIST. 36" RCP WATERLINE SEE CONNECTION NOTE.

PROPOSED 20" WATERLINE LINE "A"

LEGEND

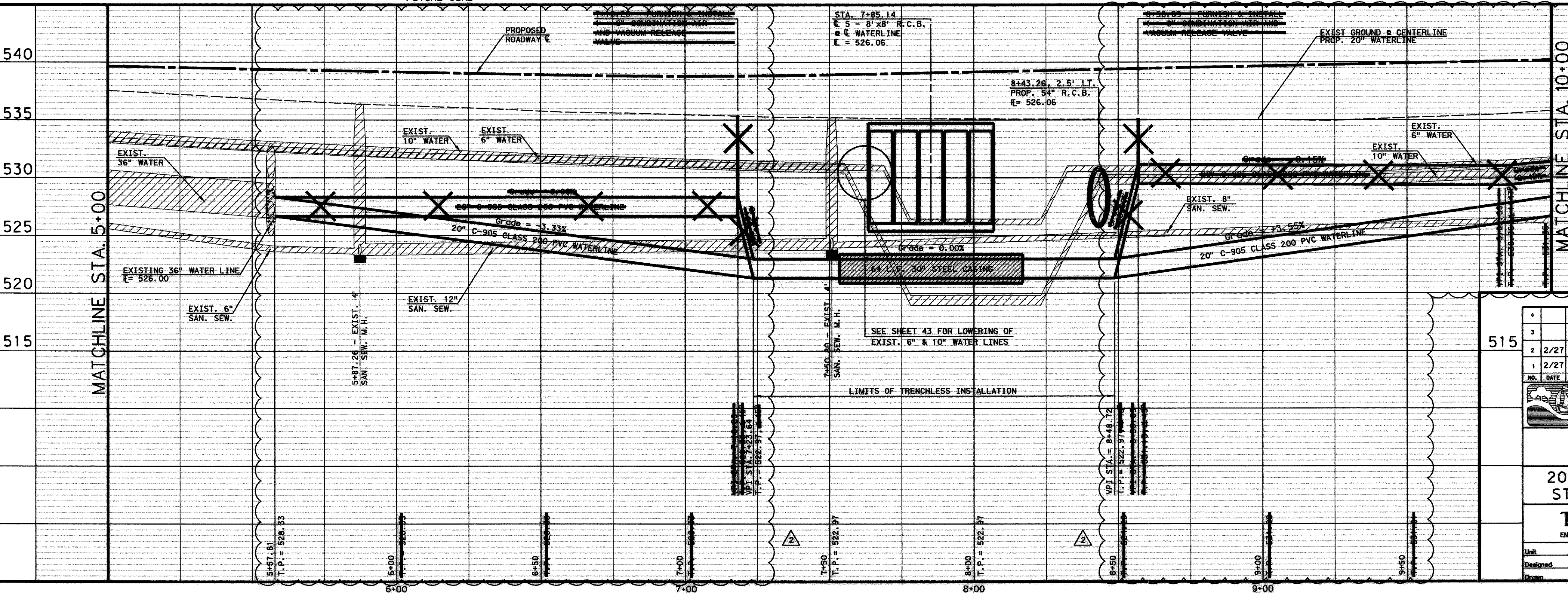
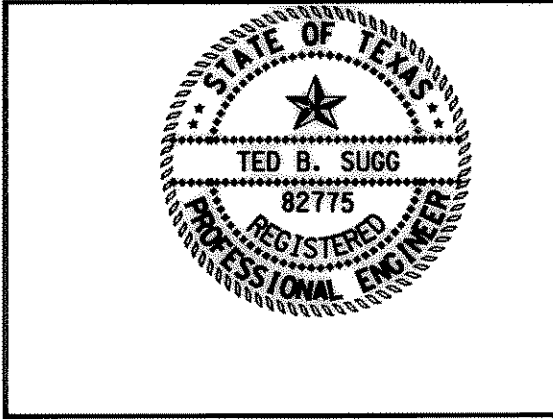
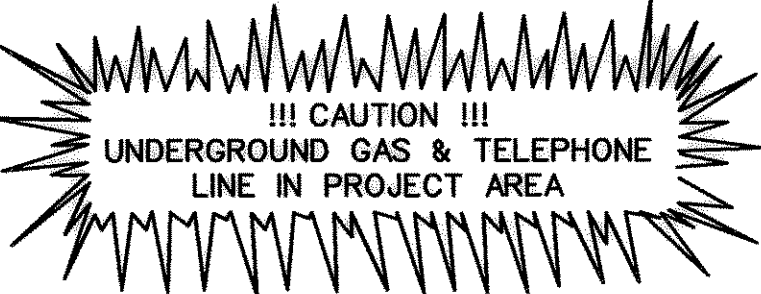
■ PROPOSED CONCRETE CONSTRUCTION

□ FUTURE CONSTRUCTION

--- FUTURE CURB

CONNECTION NOTE:

CONTRACTOR IS TO CONNECT PROP. 20" PVC WATERLINE TO EXISTING 36" RCP WATERLINE. CONNECTION IS TO BE PERFORMED BY HANSON PIPE ONLY. THE CONNECTION WILL BE REQUIRED TO BE MADE ON THE WEEKEND DURING THE NIGHT HOURS. CONNECTION TIME MUST BE COORDINATED WITH AND APPROVED BY THE CITY.



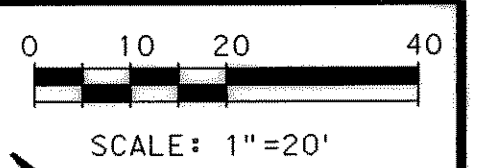
RECORD DRAWINGS

These record drawings have been prepared using information provided by the Construction Contractor and/or Owner. The seal and signature below only signifies that the plans have been revised in accordance with the information received and does not guarantee that these plans accurately show every detail of the constructed project.

Changye An 4-2-02
Date

4				
3				
2	2/27	RECORD DRAWING		
1	2/27	ADDENDUM - MODIFIED NOTE		
NO.	DATE	REVISION	APPROV.	
CITY OF ROCKWALL "THE NEW HORIZON"				
TOWNSEND DRIVE				
20" WATERLINE - LINE "A" STA. 5+00 TO STA. 10+00				
TurnerCollie & Braden Inc. ENGINEERS • PLANNERS • PROJECT MANAGERS				
Unit	A123	Scale: Horiz. 1"=20' Vert. 1"=5'	Date	FEBRUARY, 2001
Designed	VVS	Checked	TBS	Job No. 15-00925-200
Drawn	GBA	Approved	RGR	Sheet 31A of 72

P:\Rockwall\Townsend Dr Live\Draw\Inps\Phase1\Townsend\WTR EP01A.Dwg



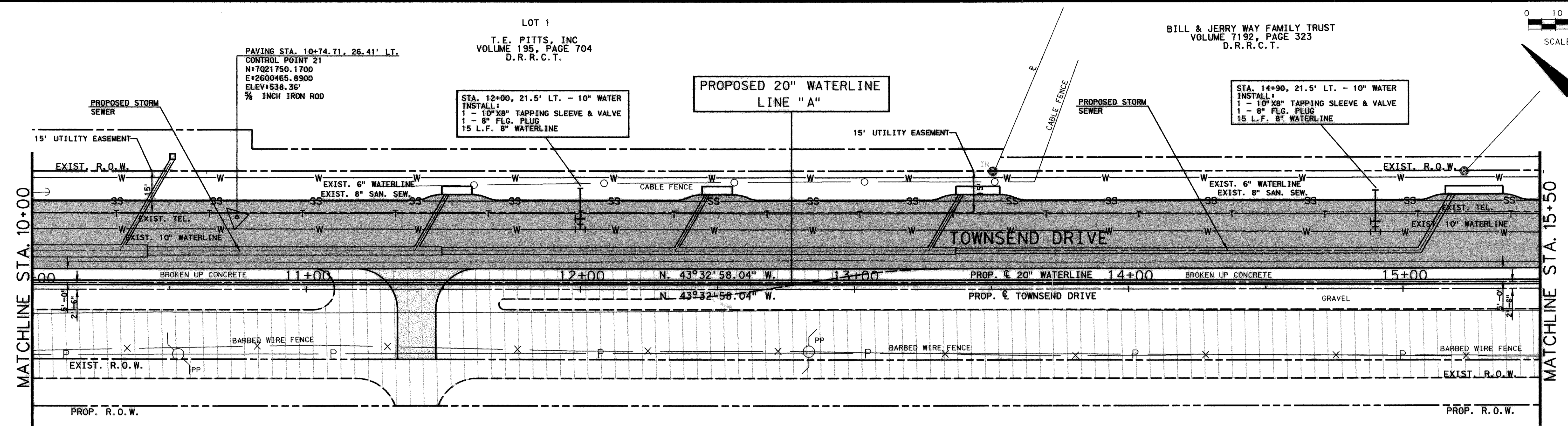
BILL & JERRY WAY FAMILY TRUST
VOLUME 7192, PAGE 323
D.R.R.C.T.

LOT 1
T.E. PITTS, INC.
VOLUME 195, PAGE 704
D.R.R.C.T.

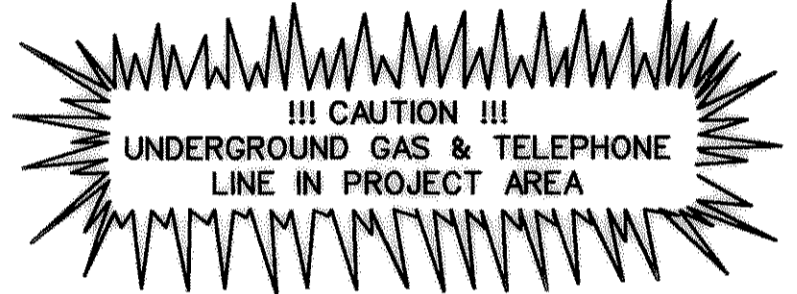
PAVING STA. 10+74.71, 26.41' LT.
CONTROL POINT 21
N=7021750.1700
E=2600465.8900
ELEV=538.36'
5/8" INCH IRON ROD

STA. 12+00, 21.5' LT. - 10" WATER
INSTALL:
1 - 10" X 8" TAPPING SLEEVE & VALVE
1 - 8" FLG. PLUG
15 L.F. 8" WATERLINE

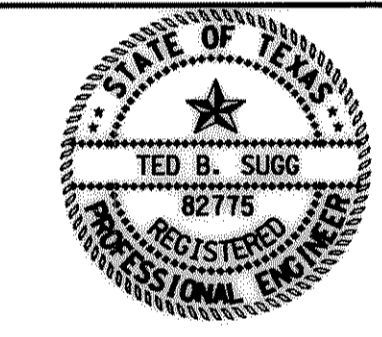
STA. 14+90, 21.5' LT. - 10" WATER
INSTALL:
1 - 10" X 8" TAPPING SLEEVE & VALVE
1 - 8" FLG. PLUG
15 L.F. 8" WATERLINE



- LEGEND**
- PROPOSED CONCRETE CONSTRUCTION
 - FUTURE CONSTRUCTION
 - PROPOSED ASPHALT CONSTRUCTION
 - FUTURE CURB

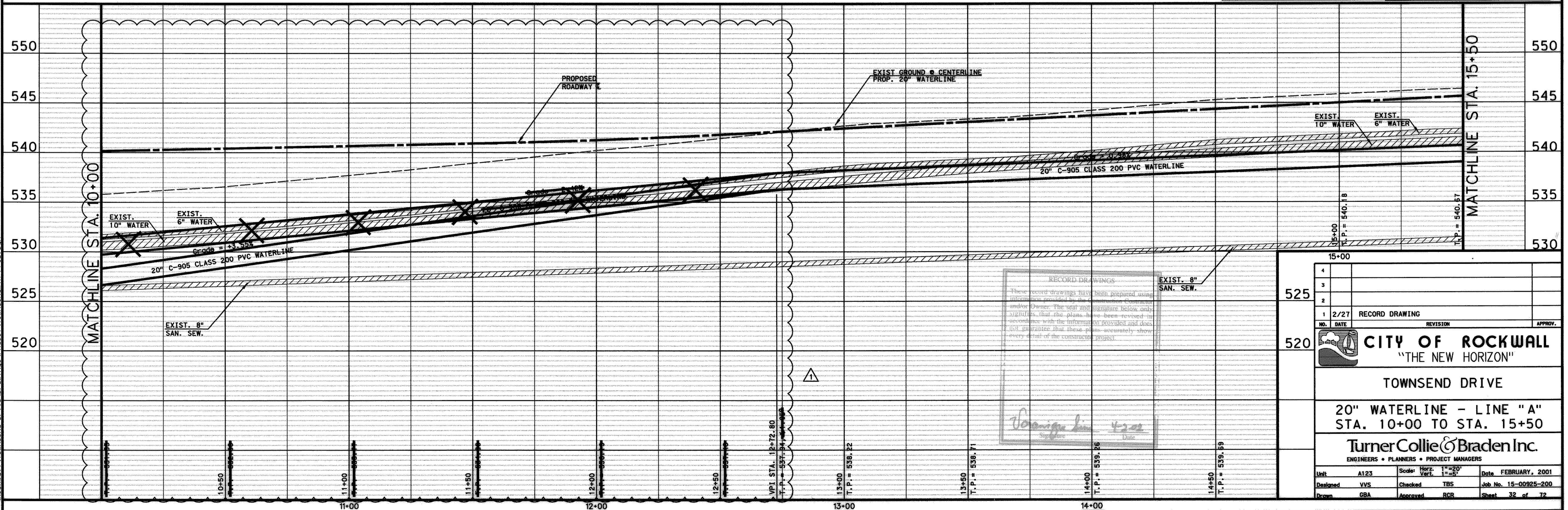


CAMBRIDGE COMPANIES
VOLUME 105, PAGE 505
D.R.R.C.T.



UNDERGROUND UTILITIES

THE LOCATION OF EXISTING UTILITIES SHOWN ON THESE PLANS ARE APPROXIMATE AND BASED ON DATA FURNISHED BY UTILITY COMPANIES. IT IS THE RESPONSIBILITY OF THE CONTRACTOR TO LOCATE AND VERIFY ON-SITE THE UTILITIES THAT MAY CONFLICT WITH THE CONSTRUCTION.



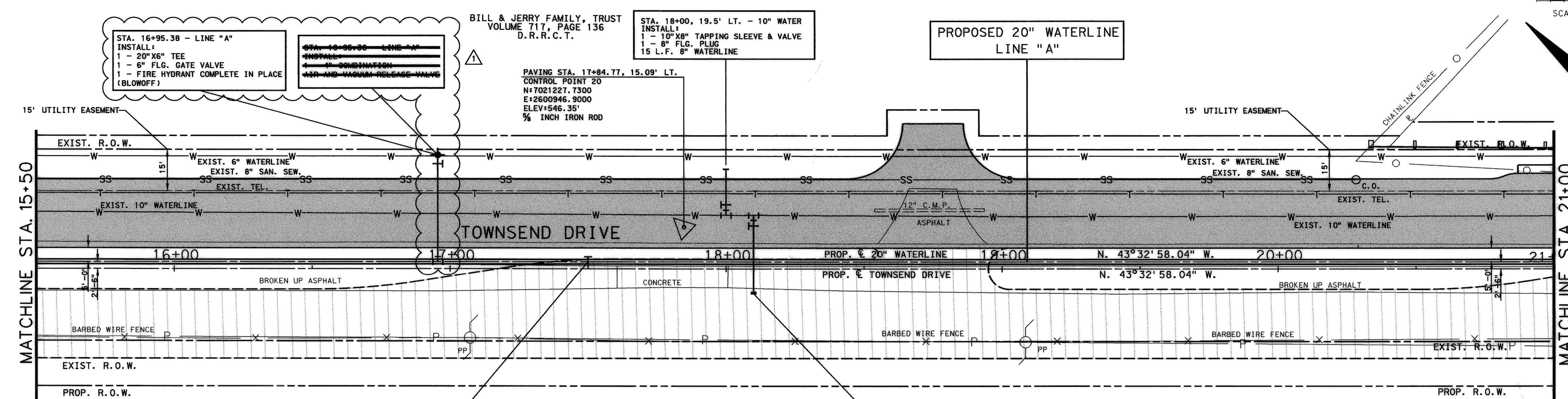
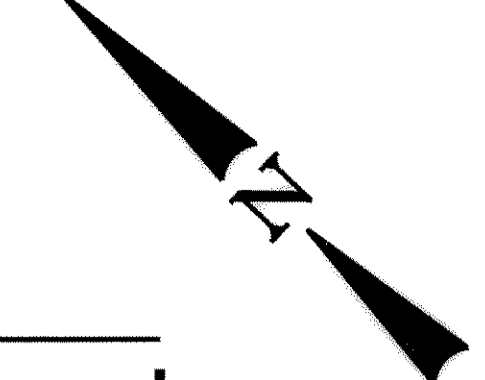
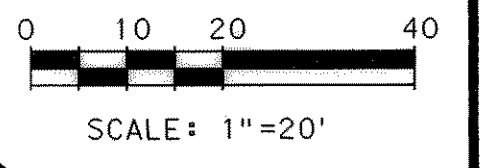
RECORD DRAWINGS

These record drawings have been prepared using information provided by the Construction Contract and/or Owner. The seal and signature below only signifies that the plans have been reviewed in accordance with the information provided and does not guarantee that these plans accurately show every detail of the constructed project.

Signature
Date

4			
3			
2			
1	2/27	RECORD DRAWING	
NO.	DATE	REVISION	APPROV.
CITY OF ROCKWALL "THE NEW HORIZON"			
TOWNSEND DRIVE 20" WATERLINE - LINE "A" STA. 10+00 TO STA. 15+50			
TurnerCollie & Braden Inc. ENGINEERS • PLANNERS • PROJECT MANAGERS			
Unit	A123	Scale: Horiz. 1"=20' Vert. 1"=5'	Date FEBRUARY, 2001
Designed	VVS	Checked TBS	Job No. 15-00925-200
Drawn	GBA	Approved RCR	Sheet 32 of 72

P:\Rockwall\Townsend Drive\Drawings\Phase1\TownsendWTR_PP02.dwg



STA. 16+95.38 - LINE "A"
 INSTALL:
 1 - 20"x6" TEE
 1 - 6" FLG. GATE VALVE
 1 - FIRE HYDRANT COMPLETE IN PLACE (BLOWOFF)

STA. 16+96.00 - LINE "A"
 INSTALL:
 1 - 1" COMBINATION AIR AND VACUUM RELEASE VALVE

BILL & JERRY FAMILY, TRUST
 VOLUME 717, PAGE 136
 D.R.R.C.T.

STA. 18+00, 19.5' LT. - 10" WATER
 INSTALL:
 1 - 10"x8" TAPPING SLEEVE & VALVE
 1 - 8" FLG. PLUG
 15 L.F. 8" WATERLINE

PAVING STA. 17+84.77, 15.09' LT.
 CONTROL POINT 20
 N: 7021227.7300
 E: 2600946.9000
 ELEV: 546.35'
 5/8" INCH IRON ROD

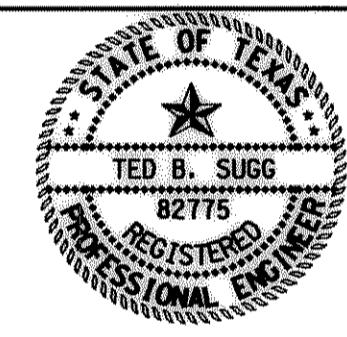
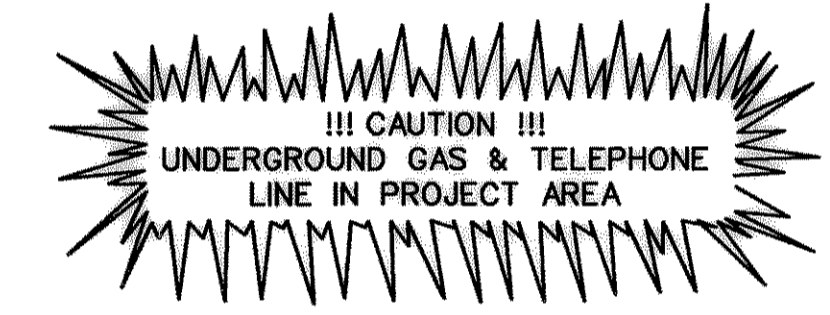
PROPOSED 20" WATERLINE
 LINE "A"

STA. 18+10, 19.5' LT. - 10" WATER
 INSTALL:
 1 - 10"x8" TAPPING SLEEVE & VALVE
 30 L.F. 8" WATERLINE
 1 - 8" FLG. PLUG

STA. 17+50 - LINE "A"
 INSTALL: 1 - 20" FLG. BUTTERFLY VALVE

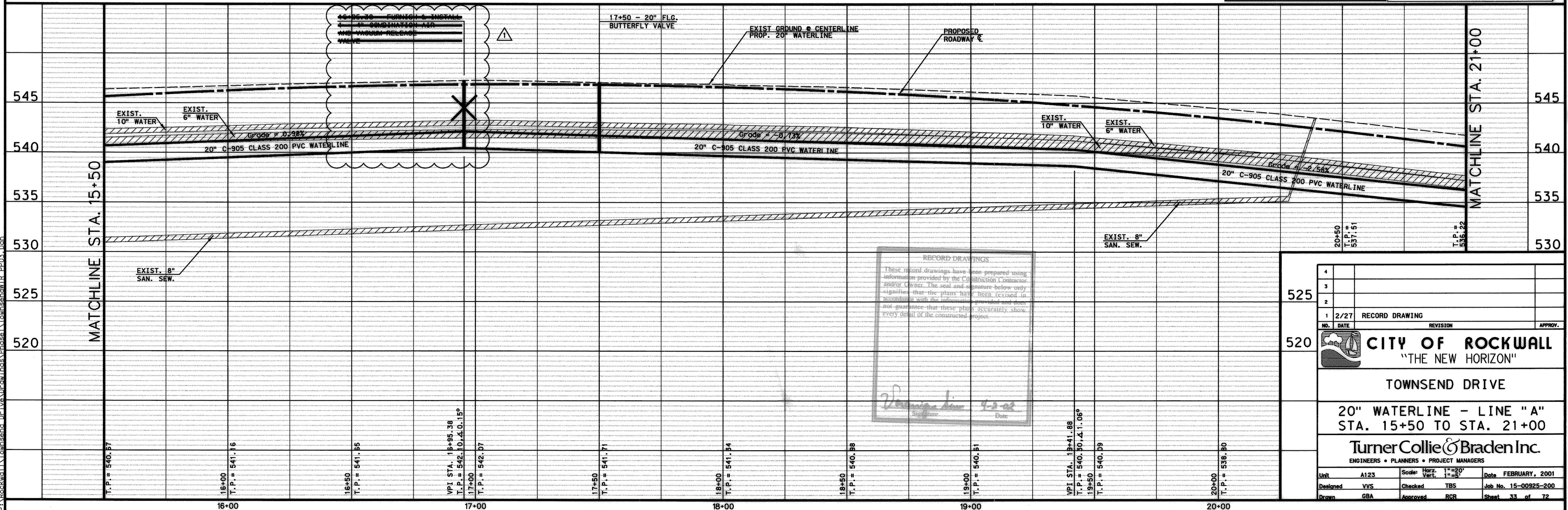
- LEGEND**
- PROPOSED CONCRETE CONSTRUCTION
 - FUTURE CONSTRUCTION
 - FUTURE CURB

CAMBRIDGE COMPANIES
 VOLUME 105, PAGE 505
 D.R.R.C.T.



UNDERGROUND UTILITIES

THE LOCATION OF EXISTING UTILITIES SHOWN ON THESE PLANS ARE APPROXIMATE AND BASED ON DATA FURNISHED BY UTILITY COMPANIES. IT IS THE RESPONSIBILITY OF THE CONTRACTOR TO LOCATE AND VERIFY ON-SITE THE UTILITIES THAT MAY CONFLICT WITH THE CONSTRUCTION.



RECORD DRAWINGS

These record drawings have been prepared using information provided by the Commission Contractor and/or Owner. The seal and signature below only signifies that the plans have been revised in accordance with the information provided and does not guarantee that these plans accurately show every detail of the constructed project.

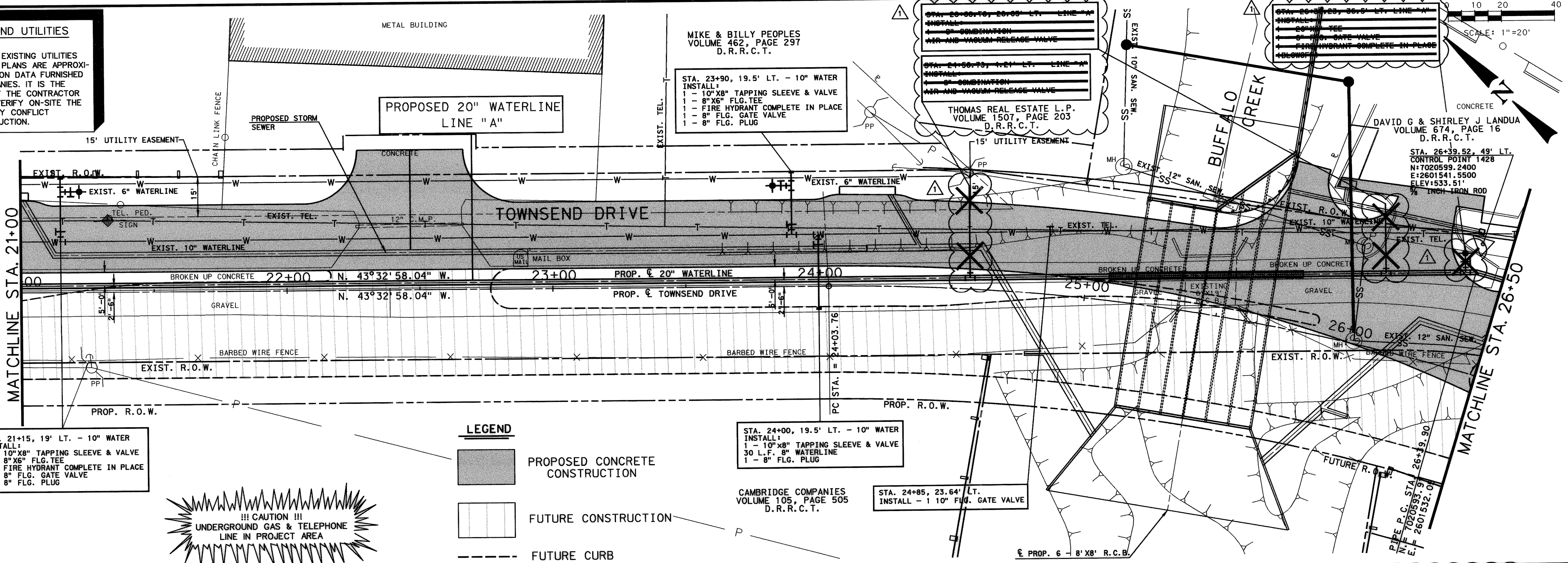
W. Sugg 4-2-02
 Signature Date

4			
3			
2			
1	2/27	RECORD DRAWING	
NO.	DATE	REVISION	APPROV.
CITY OF ROCKWALL "THE NEW HORIZON"			
TOWNSEND DRIVE			
20" WATERLINE - LINE "A" STA. 15+50 TO STA. 21+00			
Turner Collie & Braden Inc. ENGINEERS • PLANNERS • PROJECT MANAGERS			
Unit	A123	Scale: Horz. 1"=20' Vert. 1"=5'	Date FEBRUARY, 2001
Designed	YVS	Checked TBS	Job No. 15-00925-200
Drawn	GBA	Approved RGR	Sheet 33 of 72

P:\Rockwall\Townsend_Drive\Drawings\Phase1\Townsend\TR_PP03.dwg

UNDERGROUND UTILITIES

THE LOCATION OF EXISTING UTILITIES SHOWN ON THESE PLANS ARE APPROXIMATE AND BASED ON DATA FURNISHED BY UTILITY COMPANIES. IT IS THE RESPONSIBILITY OF THE CONTRACTOR TO LOCATE AND VERIFY ON-SITE THE UTILITIES THAT MAY CONFLICT WITH THE CONSTRUCTION.



STA. 21+15, 19' LT. - 10" WATER
INSTALL:
1 - 10" X 8" TAPPING SLEEVE & VALVE
1 - 8" X 6" FLG. TEE
1 - FIRE HYDRANT COMPLETE IN PLACE
1 - 8" FLG. GATE VALVE
1 - 8" FLG. PLUG

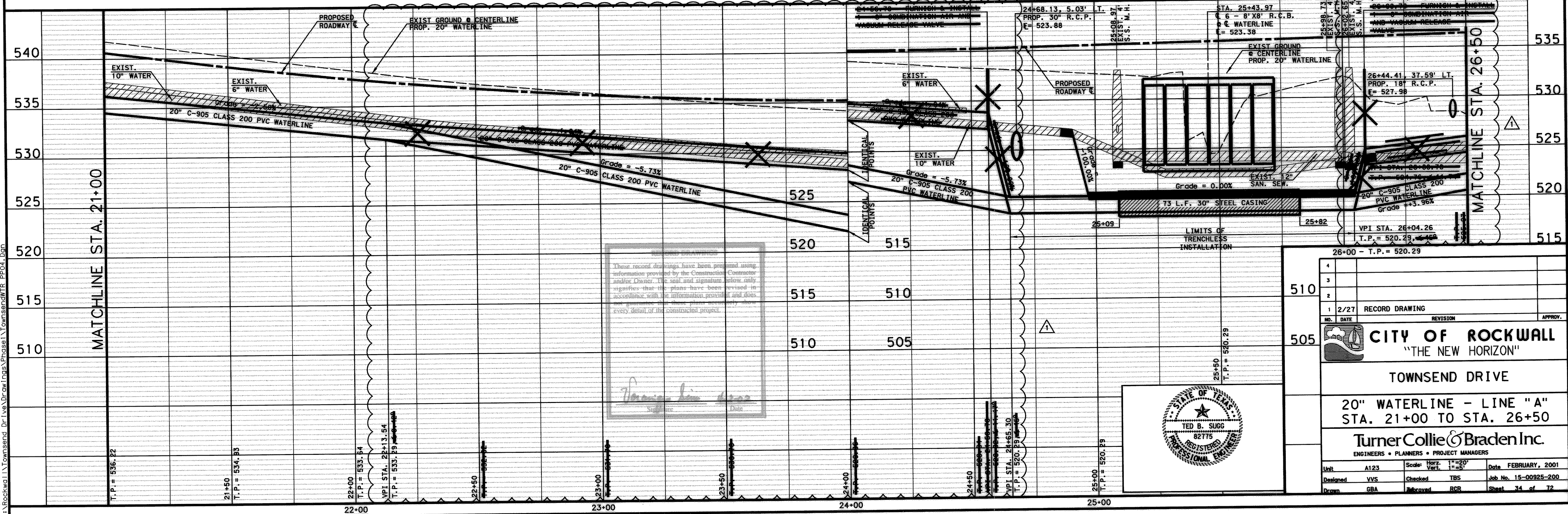
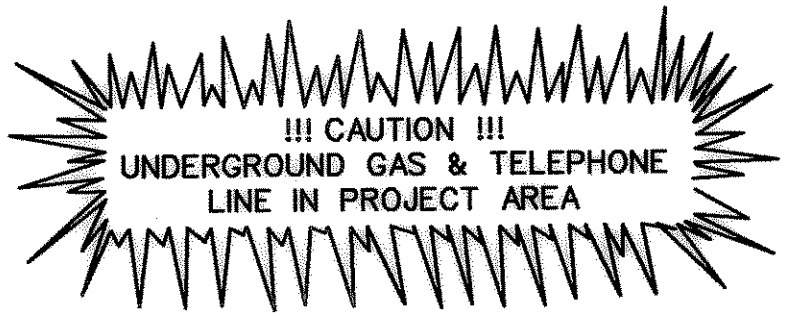
STA. 23+90, 19.5' LT. - 10" WATER
INSTALL:
1 - 10" X 8" TAPPING SLEEVE & VALVE
1 - 8" X 6" FLG. TEE
1 - FIRE HYDRANT COMPLETE IN PLACE
1 - 8" FLG. GATE VALVE
1 - 8" FLG. PLUG

STA. 24+00, 19.5' LT. - 10" WATER
INSTALL:
1 - 10" X 8" TAPPING SLEEVE & VALVE
30 L.F. 8" WATERLINE
1 - 8" FLG. PLUG

STA. 24+00, 19.5' LT. - 10" WATER
INSTALL:
1 - 10" X 8" TAPPING SLEEVE & VALVE
30 L.F. 8" WATERLINE
1 - 8" FLG. PLUG

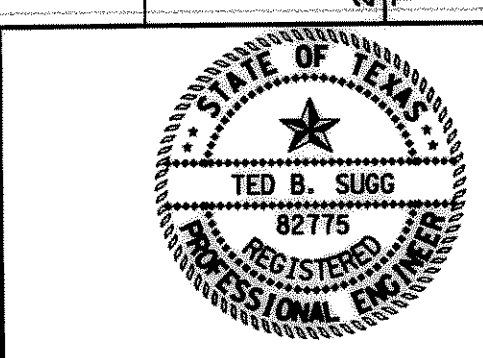
STA. 24+85, 23.64' LT.
INSTALL - 1 10" FLG. GATE VALVE

- LEGEND**
- PROPOSED CONCRETE CONSTRUCTION
- FUTURE CONSTRUCTION
- FUTURE CURB



These record drawings have been prepared using information provided by the Construction Contractor and/or Owner. The seal and signature below only signifies that the plans have been reviewed in accordance with the information provided and does not constitute an endorsement or approval of every detail of the construction project.

TurnerCollie & Braden Inc.
Date: _____

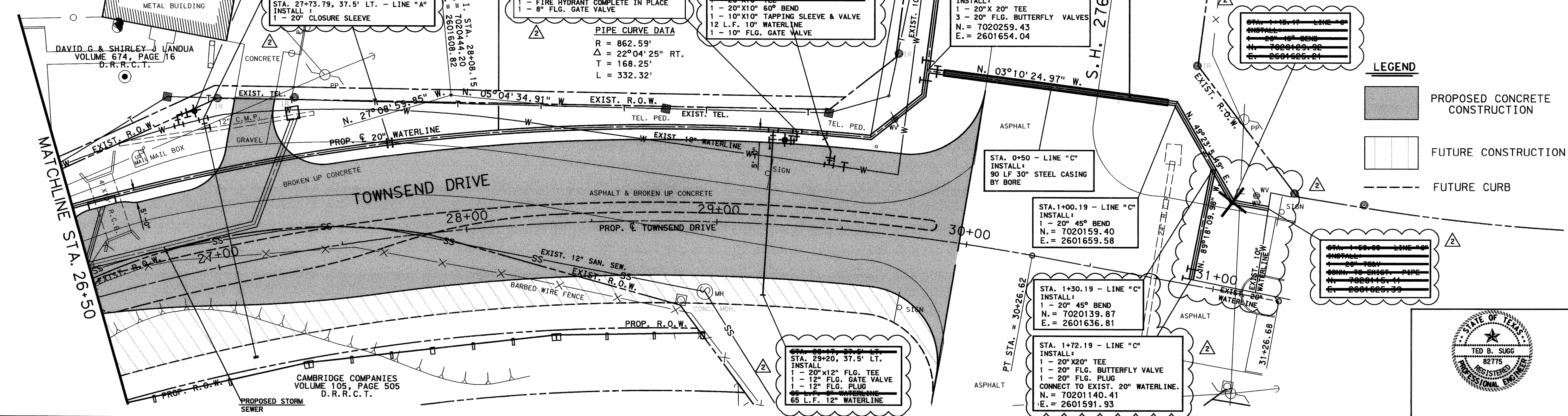


4			
3			
2			
1	2/27	RECORD DRAWING	APPROV.
NO.	DATE	REVISION	APPROV.
CITY OF ROCKWALL "THE NEW HORIZON"			
TOWNSEND DRIVE			
20" WATERLINE - LINE "A" STA. 21+00 TO STA. 26+50			
TurnerCollie & Braden Inc. ENGINEERS • PLANNERS • PROJECT MANAGERS			
Unit	A123	Scale: Horiz. 1"=20' Vert. 1"=5'	Date: FEBRUARY, 2001
Designed	VVS	Checked	TBS
Drawn	GBA	Reviewed	RCR
			Job No. 15-00925-200
			Sheet 34 of 72

P:\Rockwall\Townsend Drive\Drawings\Phase1\Townsend\WTR_PP04.dgn

UNDERGROUND UTILITIES

THE LOCATION OF EXISTING UTILITIES SHOWN ON THESE PLANS ARE APPROXIMATE AND BASED ON DATA FURNISHED BY UTILITY COMPANIES. IT IS THE RESPONSIBILITY OF THE CONTRACTOR TO LOCATE AND VERIFY ON-SITE THE UTILITIES THAT MAY CONFLICT WITH THE CONSTRUCTION.



P:\Rockwall\Townsend Drive\Drawings\Phase I\Townsend\WTR_PP05.dgn

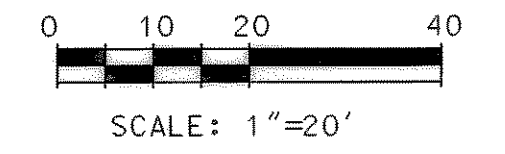
CLARA COX
VOLUME 1571, PAGE 291
D.R.R.C.T.

HOUSER ADDITION
CABINET B, SIDE 175
P.R.R.C.T.

STA. 6+65.24 - LINE "B"
INSTALL:
1 - 20" 45° BEND
N. = 7020314.31
E. = 2602271.38

PROPOSED 20" WATERLINE
LINE "A"

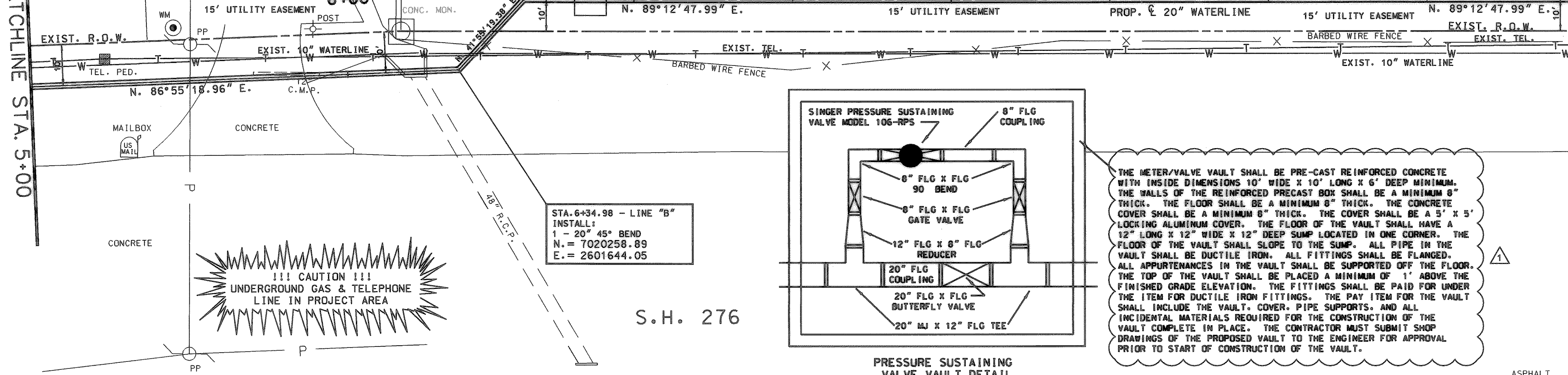
NOTE: CONTRACTOR IS TO VERIFY LOCATION
OF EXISTING 10" WATERLINE TO AVOID
CONFLICTS DURING CONSTRUCTION.



UNDERGROUND UTILITIES
THE LOCATION OF EXISTING UTILITIES
SHOWN ON THESE PLANS ARE APPROXI-
MATE AND BASED ON DATA FURNISHED
BY UTILITY COMPANIES. IT IS THE
RESPONSIBILITY OF THE CONTRACTOR
TO LOCATE AND VERIFY ON-SITE THE
UTILITIES THAT MAY CONFLICT
WITH THE CONSTRUCTION.

MATCHLINE STA. 5+00

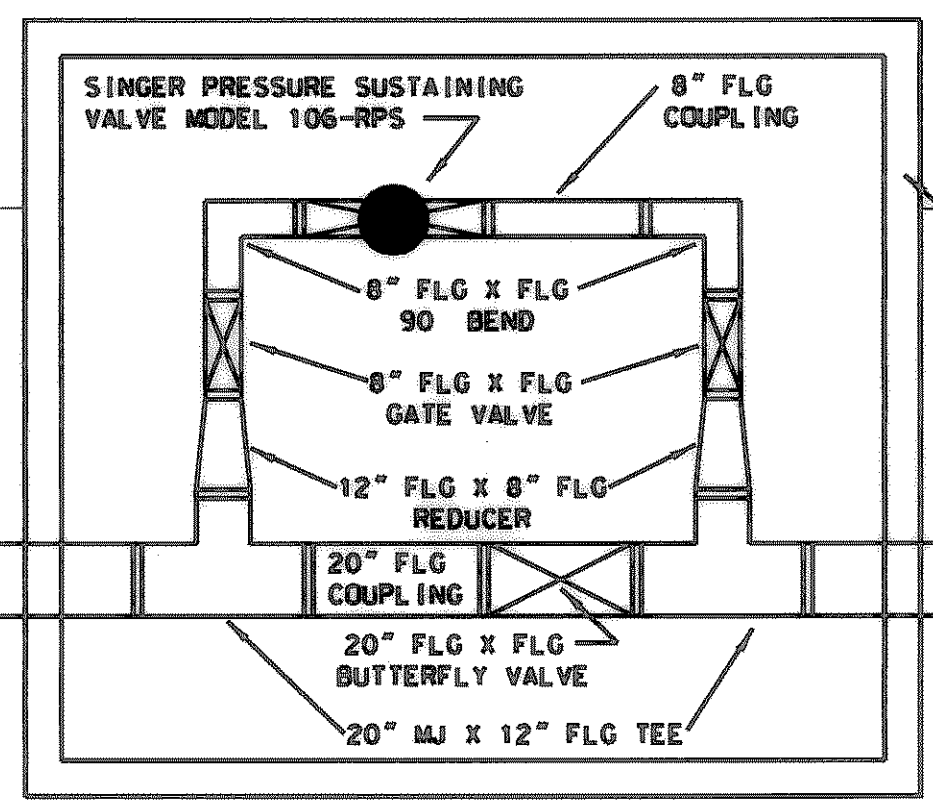
MATCHLINE STA. 10+00



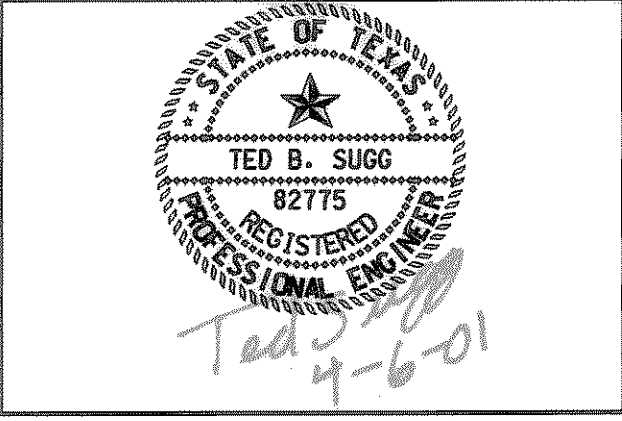
STA. 6+34.98 - LINE "B"
INSTALL:
1 - 20" 45° BEND
N. = 7020258.89
E. = 2601644.05

!!! CAUTION !!!
UNDERGROUND GAS & TELEPHONE
LINE IN PROJECT AREA

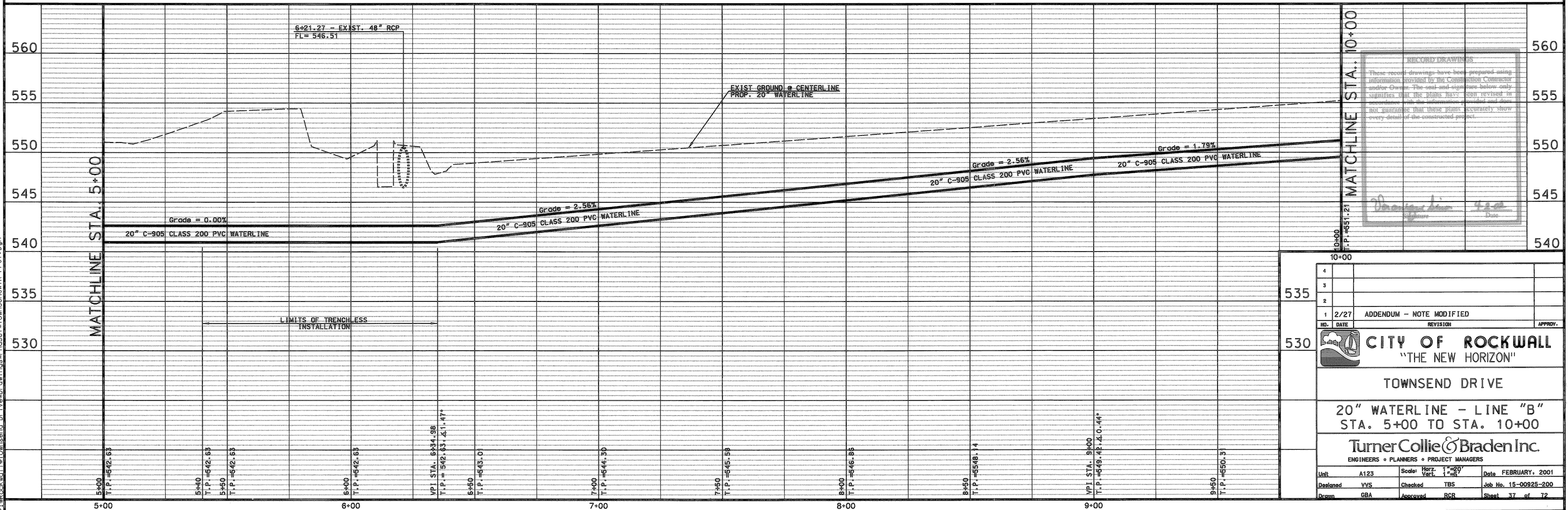
S.H. 276



THE METER/VALVE VAULT SHALL BE PRE-CAST REINFORCED CONCRETE WITH INSIDE DIMENSIONS 10' WIDE X 10' LONG X 6' DEEP MINIMUM. THE WALLS OF THE REINFORCED PRECAST BOX SHALL BE A MINIMUM 8" THICK. THE FLOOR SHALL BE A MINIMUM 8" THICK. THE CONCRETE COVER SHALL BE A MINIMUM 8" THICK. THE COVER SHALL BE A 5' X 5' LOCKING ALUMINUM COVER. THE FLOOR OF THE VAULT SHALL HAVE A 12" LONG X 12" WIDE X 12" DEEP SUMP LOCATED IN ONE CORNER. THE FLOOR OF THE VAULT SHALL SLOPE TO THE SUMP. ALL PIPE IN THE VAULT SHALL BE DUCTILE IRON. ALL FITTINGS SHALL BE FLANGED. ALL APPURTENANCES IN THE VAULT SHALL BE SUPPORTED OFF THE FLOOR. THE TOP OF THE VAULT SHALL BE PLACED A MINIMUM OF 1' ABOVE THE FINISHED GRADE ELEVATION. THE FITTINGS SHALL BE PAID FOR UNDER THE ITEM FOR DUCTILE IRON FITTINGS. THE PAY ITEM FOR THE VAULT SHALL INCLUDE THE VAULT, COVER, PIPE SUPPORTS, AND ALL INCIDENTAL MATERIALS REQUIRED FOR THE CONSTRUCTION OF THE VAULT COMPLETE IN PLACE. THE CONTRACTOR MUST SUBMIT SHOP DRAWINGS OF THE PROPOSED VAULT TO THE ENGINEER FOR APPROVAL PRIOR TO START OF CONSTRUCTION OF THE VAULT.



ASPHALT



RECORD DRAWINGS
These record drawings have been prepared using information provided by the Construction Contractor and/or Owner. The seal and signature below only signifies that the Plans have been reviewed in accordance with the information provided and does not guarantee that these plans accurately show every detail of the constructed product.

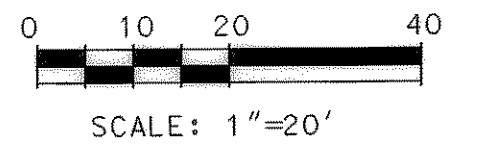
4			
3			
2			
1	2/27	ADDENDUM - NOTE MODIFIED	APPROV.
NO.	DATE	REVISION	
CITY OF ROCKWALL "THE NEW HORIZON" TOWNSEND DRIVE 20" WATERLINE - LINE "B" STA. 5+00 TO STA. 10+00 Turner Collie & Braden Inc. ENGINEERS • PLANNERS • PROJECT MANAGERS			
Unit	A123	Scale: Horiz. 1"=20'	Date FEBRUARY, 2001
Designed	VVS	Checked TBS	Job No. 15-00925-200
Drawn	GBA	Approved RCR	Sheet 37 of 72

P:\Rockwall\Townsend Drive\Drawings\Phase1\Townsend\WTR_PP07.dgn

CAMBRIDGE COMPANIES
VOLUME 99, PAGE 1022
D.R.R.C.T.

PROPOSED 20" WATERLINE
LINE "A"

NOTE: CONTRACTOR IS TO VERIFY LOCATION
OF EXISTING 10" WATERLINE TO AVOID
CONFLICTS DURING CONSTRUCTION.



MATCHLINE STA. 10+00

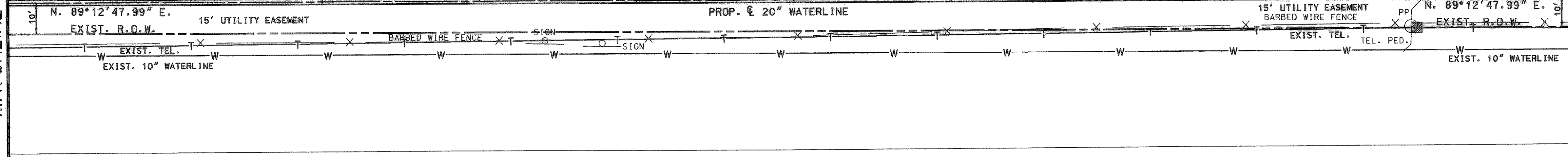
11+00

12+00

13+00

14+00

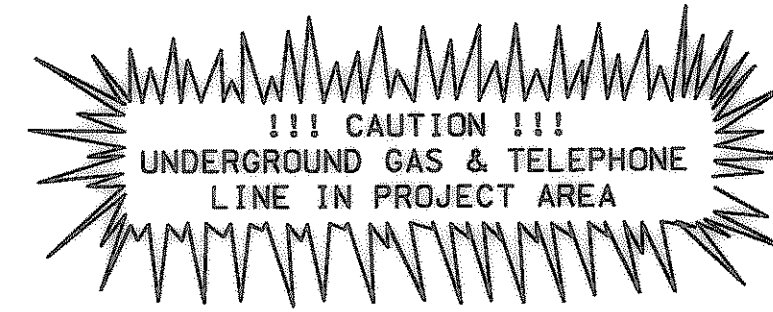
MATCHLINE STA. 15+00



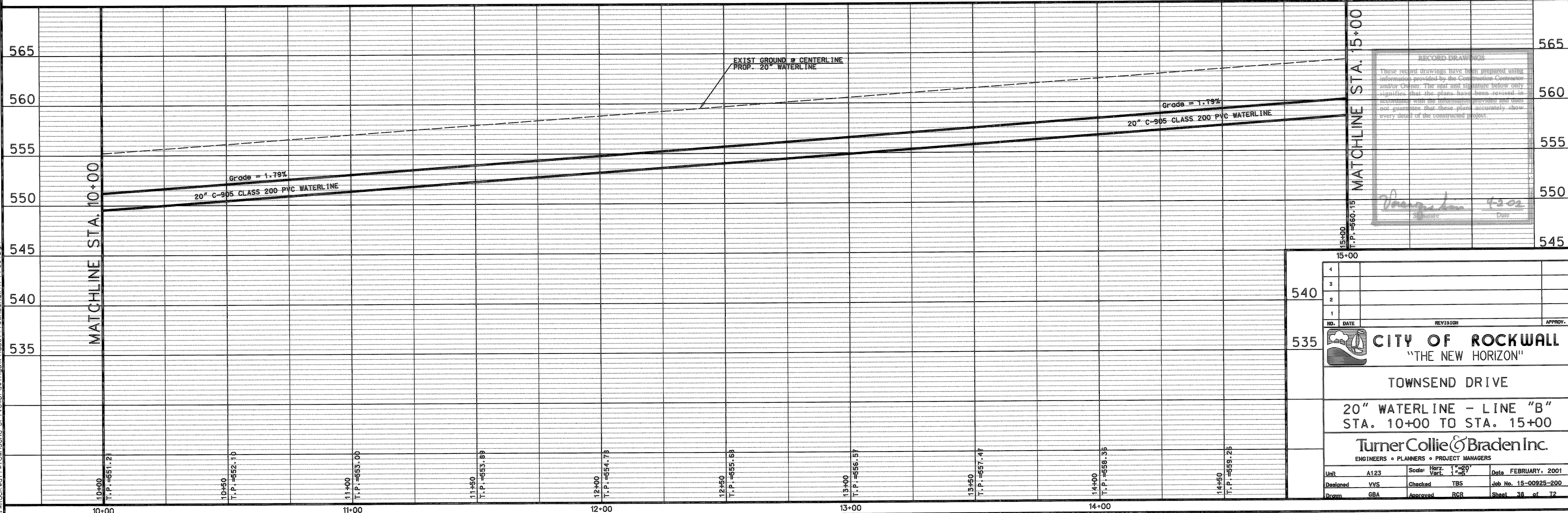
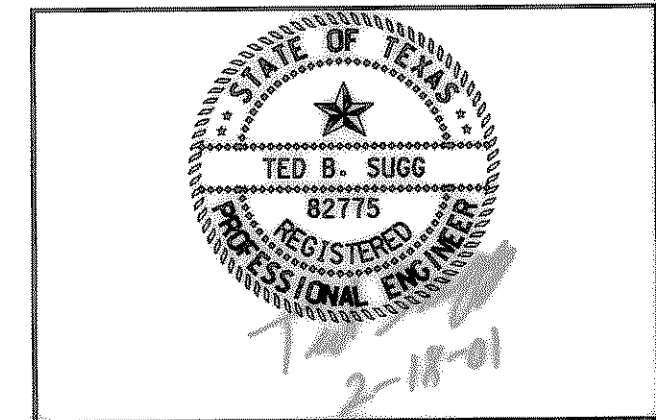
UNDERGROUND UTILITIES

THE LOCATION OF EXISTING UTILITIES SHOWN ON THESE PLANS ARE APPROXIMATE AND BASED ON DATA FURNISHED BY UTILITY COMPANIES. IT IS THE RESPONSIBILITY OF THE CONTRACTOR TO LOCATE AND VERIFY ON-SITE THE UTILITIES THAT MAY CONFLICT WITH THE CONSTRUCTION.

S.H. 276



STA. 14+00.55, 109.93' RT.
CONTROL POINT 18
N: 7020214.4900
E: 2603008.1300
ELEV: 571.23'
5/8 INCH ROD



RECORD DRAWINGS
These record drawings have been prepared using information provided by the Construction Contractor and/or Owner. The seal and signature below only signifies that the plans have been reviewed in accordance with the information provided and does not guarantee that these plans accurately show every detail of the constructed project.

Signature 4/30/02

Date

4			
3			
2			
1			
NO.	DATE	REVISION	APPROV.
CITY OF ROCKWALL "THE NEW HORIZON" TOWNSEND DRIVE 20" WATERLINE - LINE "B" STA. 10+00 TO STA. 15+00 Turner Collie & Braden Inc. ENGINEERS • PLANNERS • PROJECT MANAGERS			
Unit	A123	Scale: Horiz. 1"=20' Vert. 1"=5'	Date FEBRUARY, 2001
Designed	VVS	Checked TBS	Job No. 15-00925-200
Drawn	GBA	Approved RGR	Sheet 38 of 72

P:\rockwall\Townsend Drive\Drawings\Propose\TownsendWTR_PP08.dwg

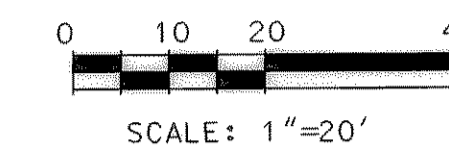
NOTE: CONTRACTOR IS TO VERIFY LOCATION OF EXISTING 10" WATERLINE TO AVOID CONFLICTS DURING CONSTRUCTION.

CAMBRIDGE COMPANIES
VOLUME 99, PAGE 1022
D.R.R.C.T.

PROPOSED 20" WATERLINE
LINE "A"

!!! CAUTION !!!
UNDERGROUND H.P. GAS LINE
LINE IN PROJECT AREA

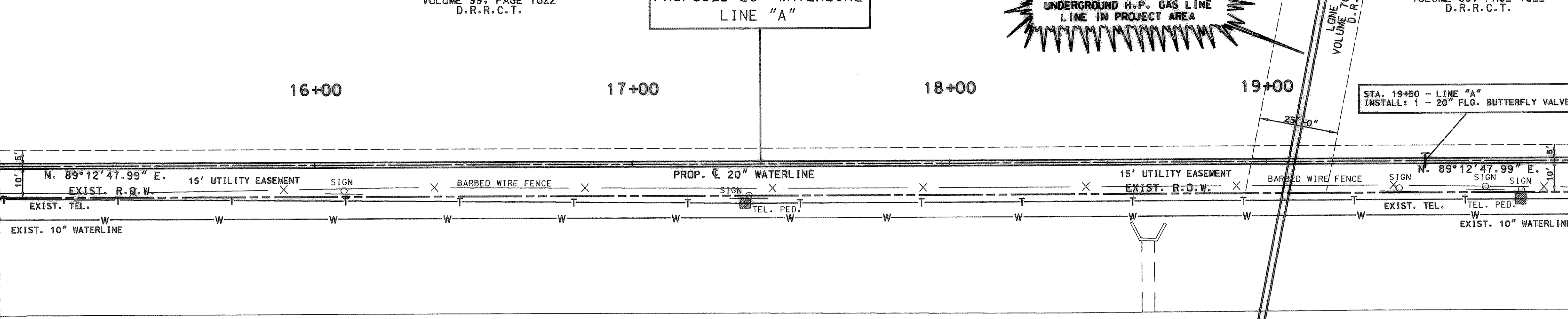
CAMBRIDGE COMPANIES
VOLUME 99, PAGE 1022
D.R.R.C.T.



UNDERGROUND UTILITIES
THE LOCATION OF EXISTING UTILITIES SHOWN ON THESE PLANS ARE APPROXIMATE AND BASED ON DATA FURNISHED BY UTILITY COMPANIES. IT IS THE RESPONSIBILITY OF THE CONTRACTOR TO LOCATE AND VERIFY ON-SITE THE UTILITIES THAT MAY CONFLICT WITH THE CONSTRUCTION.

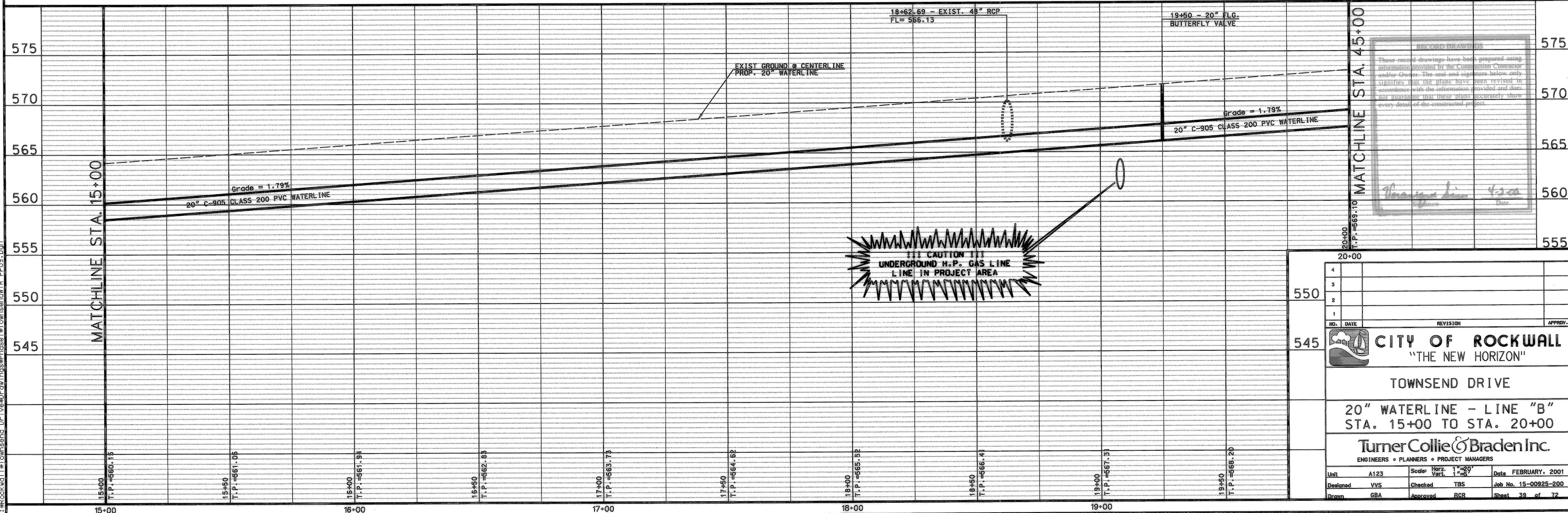
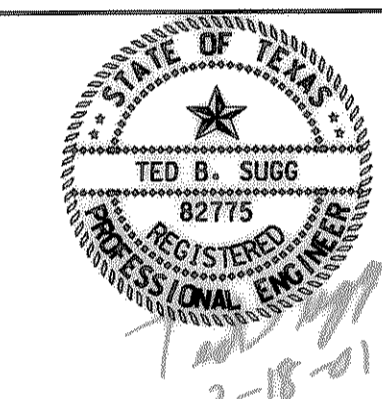
MATCHLINE STA. 15+00

MATCHLINE STA. 20+00



S.H. 276

!!! CAUTION !!!
UNDERGROUND GAS & TELEPHONE
LINE IN PROJECT AREA



RECORD DRAWING
These record drawings have been prepared using information provided by the Contractor. The Contractor warrants that the plans have been revised in accordance with the information provided and does not warrant that these plans accurately show every detail of the constructed project.

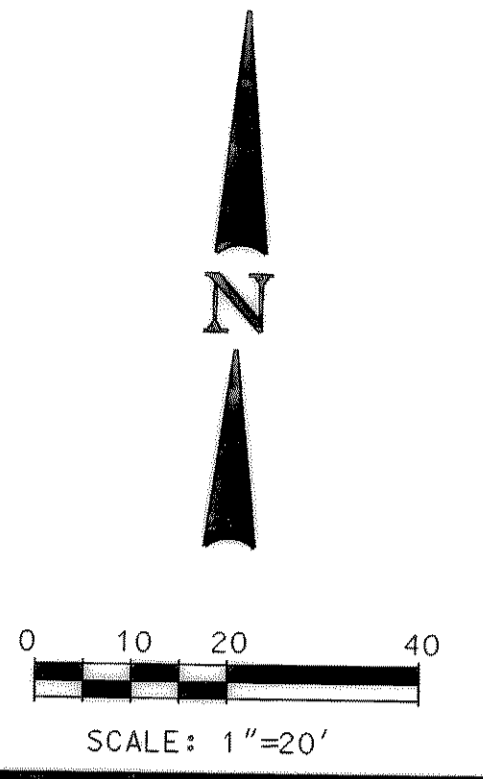
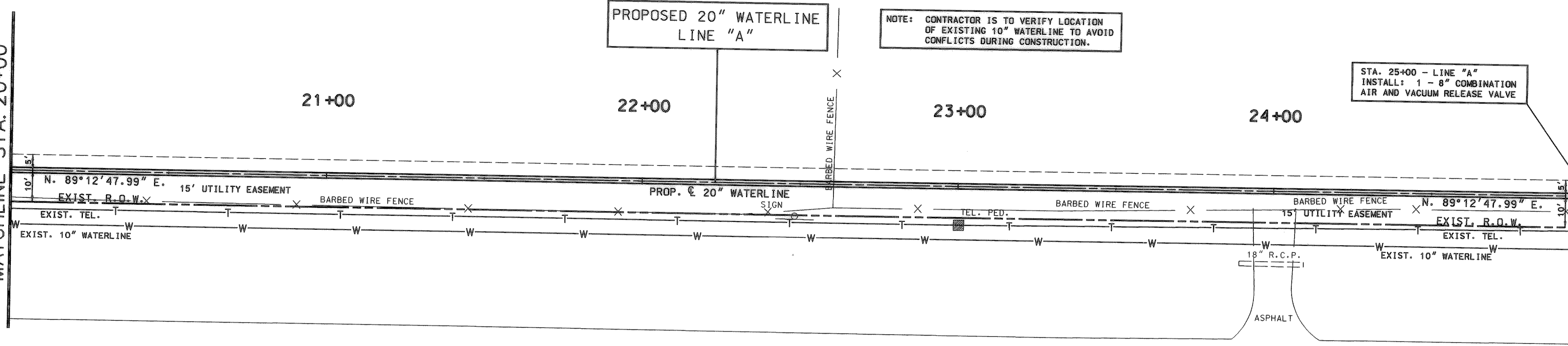
Signature 4/20
Date

4			
3			
2			
1			
NO.	DATE	REVISION	APPROV.
CITY OF ROCKWALL "THE NEW HORIZON"			
TOWNSEND DRIVE 20" WATERLINE - LINE "B" STA. 15+00 TO STA. 20+00			
Turner Collie & Braden Inc. ENGINEERS • PLANNERS • PROJECT MANAGERS			
Unit	A123	Scale: Horiz. 1"=20'	Date: FEBRUARY, 2001
Designed	YVS	Checked: TBS	Job No. 15-00925-200
Drawn	GBA	Approved: RGR	Sheet 39 of 72

P:\Rockwall\Townsend Drive\Drawings\Project\Townsend\TR_P08.dwg

MATCHLINE STA. 20+00

MATCHLINE STA. 25+00

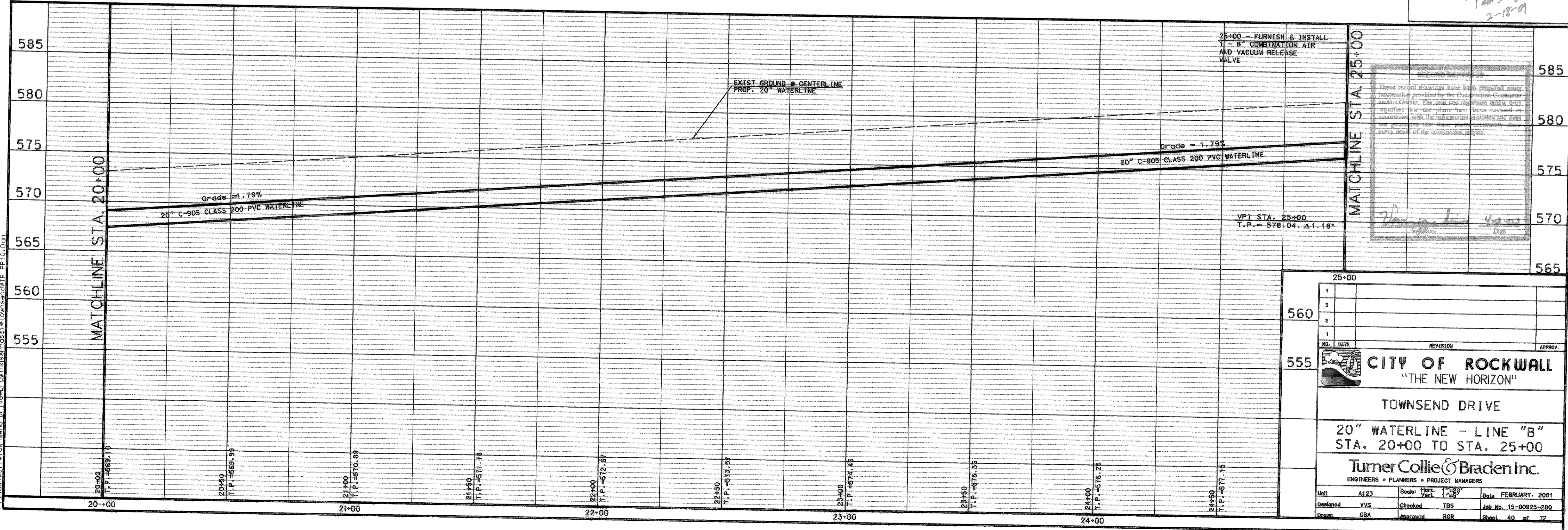
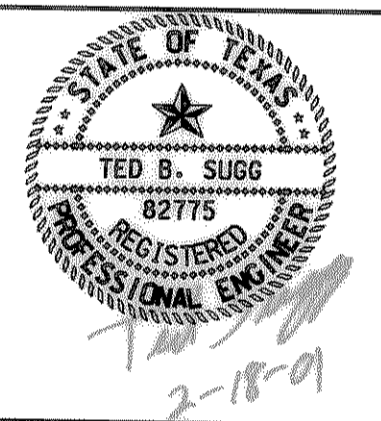
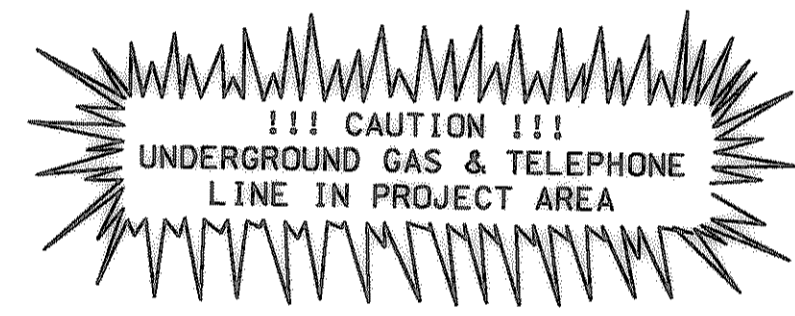


UNDERGROUND UTILITIES
THE LOCATION OF EXISTING UTILITIES SHOWN ON THESE PLANS ARE APPROXIMATE AND BASED ON DATA FURNISHED BY UTILITY COMPANIES. IT IS THE RESPONSIBILITY OF THE CONTRACTOR TO LOCATE AND VERIFY ON-SITE THE UTILITIES THAT MAY CONFLICT WITH THE CONSTRUCTION.

ASPHALT

ASPHALT

S.H. 276



RECORD DRAWINGS
These record drawings have been prepared using information provided by the Construction Commission and/or Owner. The seal and signature below only signifies that the plans have been reviewed in accordance with the information provided and does not guarantee that these plans accurately show every detail of the constructed project.

Signature *Date*

P:\Rockwall\Townsend_Dr\Drawings\Phase1\Townsend\WTR_PP10.dwg

4			
3			
2			
1			
NO.	DATE	REVISION	APPROV.
<p>CITY OF ROCKWALL "THE NEW HORIZON"</p> <p>TOWNSEND DRIVE</p> <p>20" WATERLINE - LINE "B" STA. 20+00 TO STA. 25+00</p> <p>Turner Collie & Braden Inc. ENGINEERS • PLANNERS • PROJECT MANAGERS</p>			
Unit	A123	Scale: Horiz. 1"=20' Vert. 1"=5'	Date FEBRUARY, 2001
Designed	VVS	Checked TBS	Job No. 15-00925-200
Drawn	GBA	Approved RCB	Sheet 40 of 72

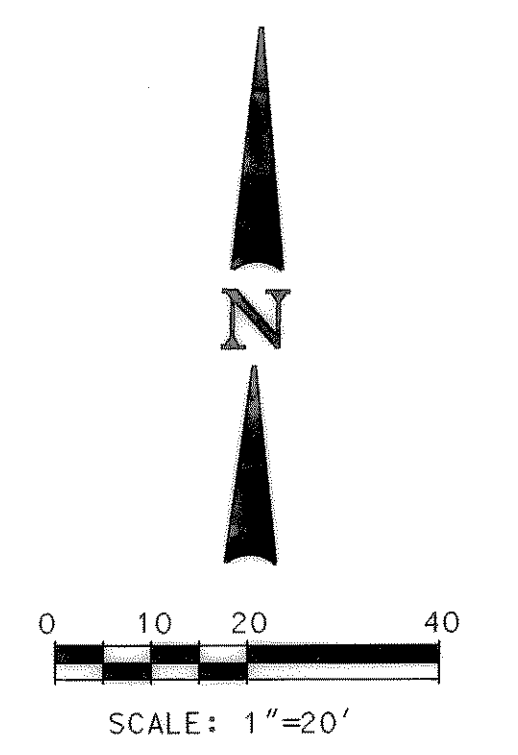
MATCHLINE STA. 30+00

PROPOSED 20" WATERLINE LINE "A"

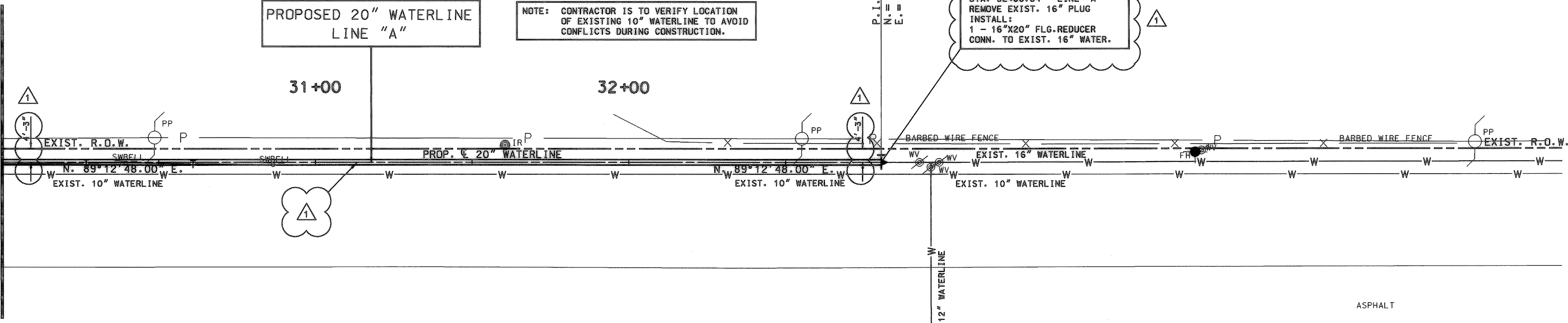
NOTE: CONTRACTOR IS TO VERIFY LOCATION OF EXISTING 10" WATERLINE TO AVOID CONFLICTS DURING CONSTRUCTION.

STA. 32+80.54 - LINE "A"
REMOVE EXIST. 16" PLUG
INSTALL:
1 - 16"x20" FLG. REDUCER
CONN. TO EXIST. 16" WATER.

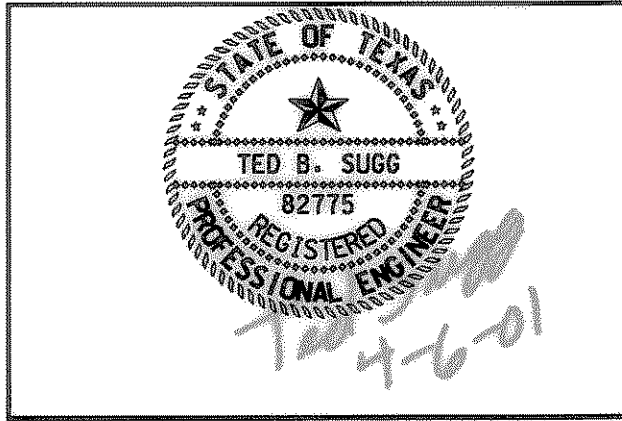
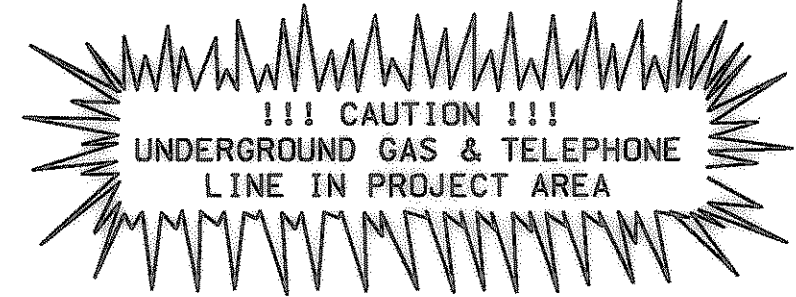
P.I. STA. 32+80.54
N. = 7020336.99
E. = 2604880.81



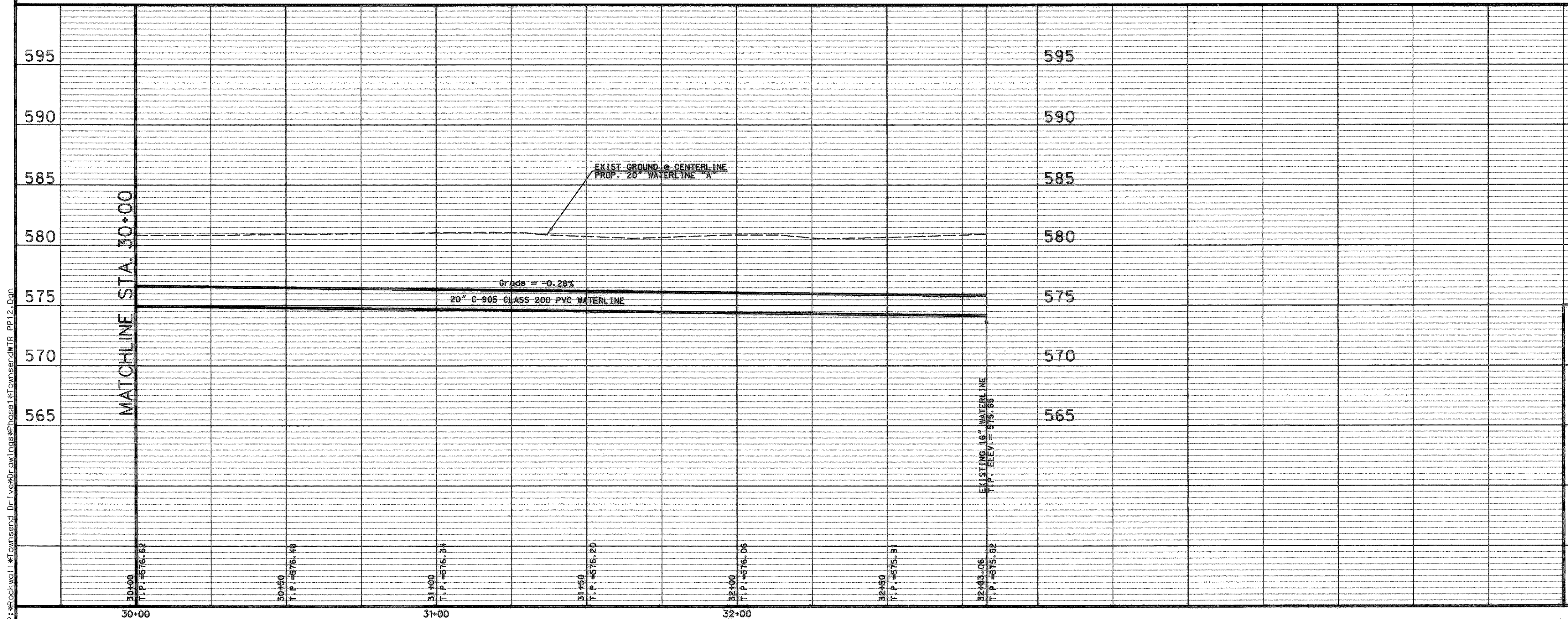
UNDERGROUND UTILITIES
THE LOCATION OF EXISTING UTILITIES SHOWN ON THESE PLANS ARE APPROXIMATE AND BASED ON DATA FURNISHED BY UTILITY COMPANIES. IT IS THE RESPONSIBILITY OF THE CONTRACTOR TO LOCATE AND VERIFY ON-SITE THE UTILITIES THAT MAY CONFLICT WITH THE CONSTRUCTION.



S.H. 276



These record drawings have been prepared using information furnished by the Construction Company and/or Owner. The seal and signature below only certify that the plans have been revised to conform with the information provided and that the preparer has taken every precaution to show every detail of the construction program.
[Signature]
Date



4			
3			
2			
1	2/27	ADDENDUM - CHANGE OF HORZ. ALIGN. 20" WATERLINE	APPROV.
NO.	DATE	REVISION	
CITY OF ROCKWALL "THE NEW HORIZON"			
TOWNSEND DRIVE			
20" WATERLINE - LINE "B" STA. 30+00 TO STA. 32+80.54			
Turner Collie & Braden Inc. ENGINEERS • PLANNERS • PROJECT MANAGERS			
Unit	A123	Scale: Horiz. 1"=20' Vert. 1"=4'	Date FEBRUARY, 2001
Designed	VVS	Checked TBS	Job No. 15-00925-200
Drawn	GBA	Approved RCR	Sheet 42 of 72

P:\Rockwall\Townsend Drive Drawings\Phase1\Townsend\TR_PP12.dwg

MATCHLINE STA. 25+00

CAMBRIDGE COMPANIES
VOLUME 99, PAGE 1022
D.R.R.C.T.

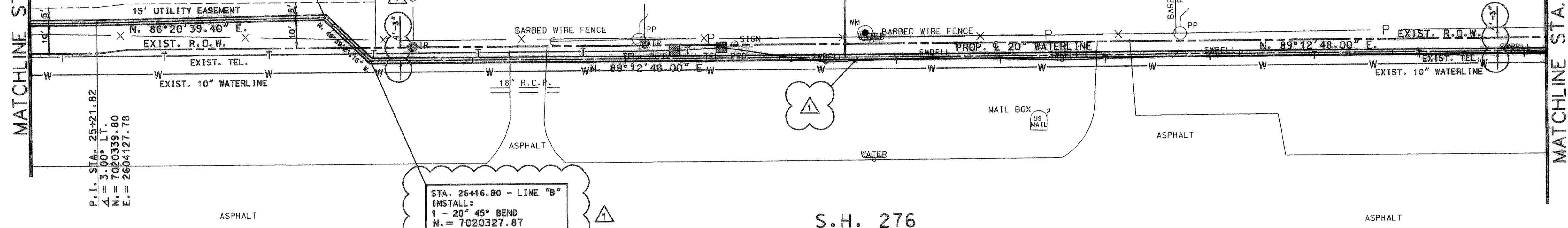
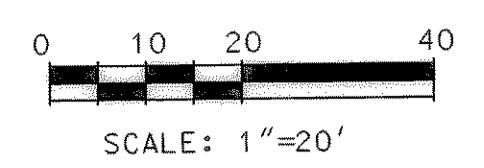
STA. 25+96.29 - LINE "B"
INSTALL:
1 - 20" 45° BEND
N. = 7020341.95
E. = 2604202.22

P.I. STA. 25+21.82
Δ = 3.00° LT.
N. = 7020339.80
E. = 2604127.78

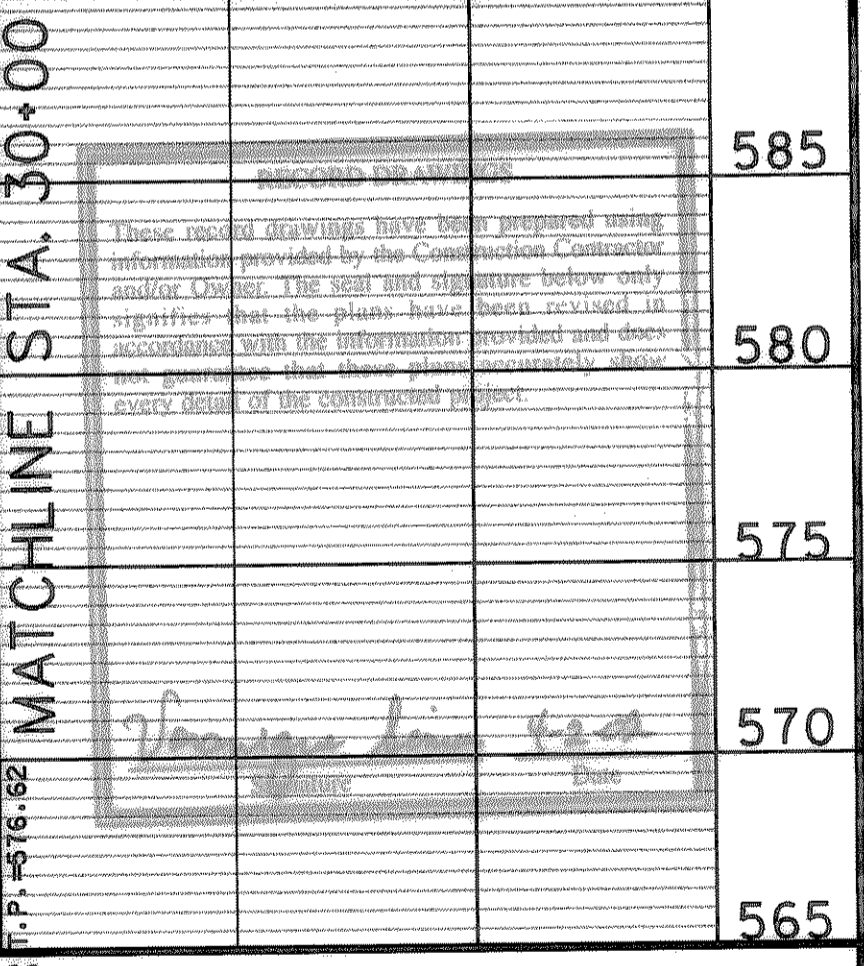
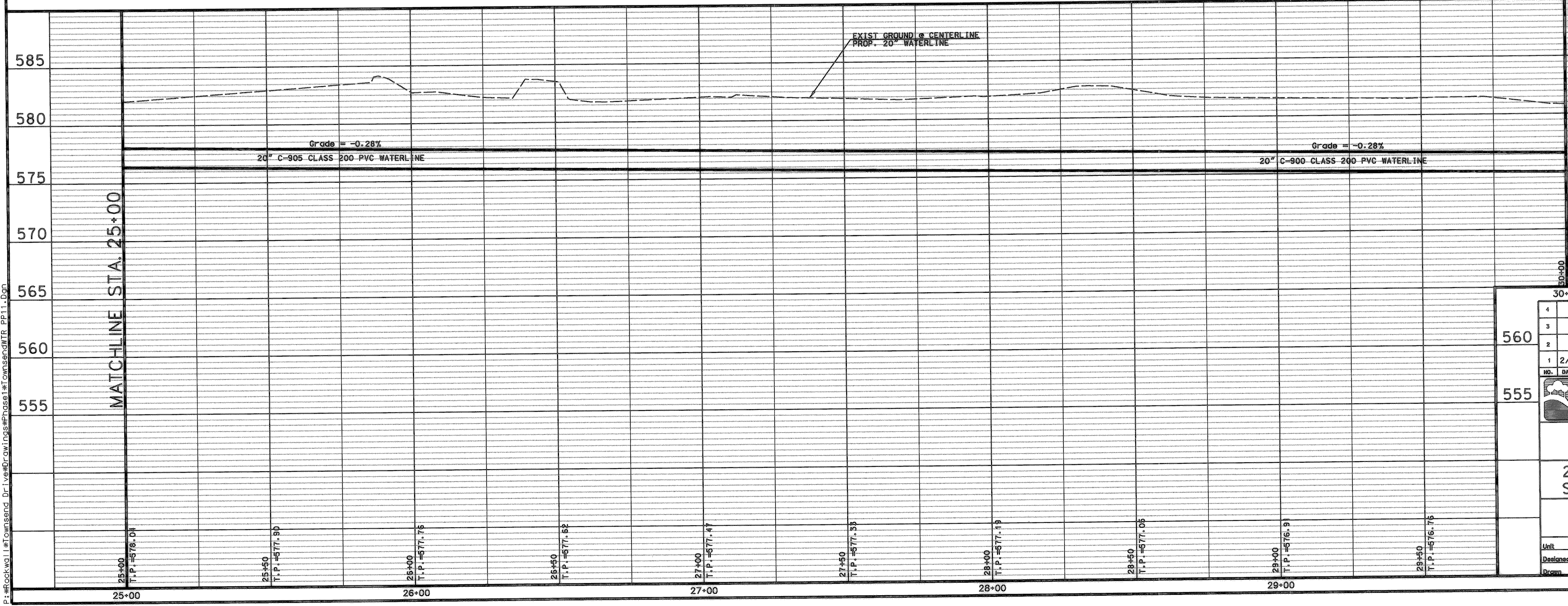
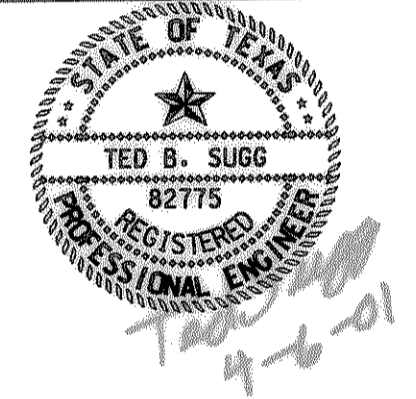
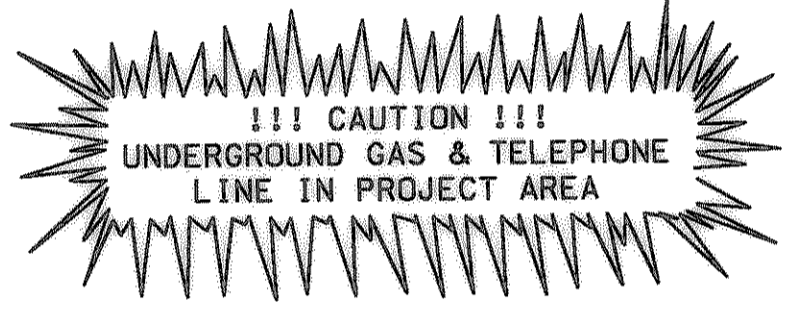
STA. 26+16.80 - LINE "B"
INSTALL:
1 - 20" 45° BEND
N. = 7020327.87
E. = 2604217.13


PROPOSED 20" WATERLINE
LINE "A"

NOTE: CONTRACTOR IS TO VERIFY LOCATION
OF EXISTING 10" WATERLINE TO AVOID
CONFLICTS DURING CONSTRUCTION.



UNDERGROUND UTILITIES
THE LOCATION OF EXISTING UTILITIES SHOWN ON THESE PLANS ARE APPROXIMATE AND BASED ON DATA FURNISHED BY UTILITY COMPANIES. IT IS THE RESPONSIBILITY OF THE CONTRACTOR TO LOCATE AND VERIFY ON-SITE THE UTILITIES THAT MAY CONFLICT WITH THE CONSTRUCTION.



4			
3			
2	2/27	ADDENDUM - CHANGE OF HORZ. ALIGN. 20" WATERLINE	
1			
 CITY OF ROCKWALL "THE NEW HORIZON" TOWNSEND DRIVE 20" WATERLINE - LINE "B" STA. 25+00 TO STA. 30+00 TurnerCollie & Braden Inc. ENGINEERS • PLANNERS • PROJECT MANAGERS			
Unit	A123	Scale: Horz. 1"=20' Vert. 1"=5'	Date FEBRUARY, 2001
Designed	VVS	Checked TBS	Job No. 15-00925-200
Drawn	GBA	Approved RCR	Sheet 41 of 72

P:\rock\wa\1\Townsend Dr\1\view\Drawings\Phase1\Townsend\TR_PP11.dwg