

1. AMETRA DOCKERY, VOL. 83, PG. 247
2. WILLIAMS FAMILY BISHOP FAMILY LP I, VOL. 2309, PG. 50
3. CULPEPPER/SPATEX, VOL. 209, PG. 475
4. WILLIAMS FAMILY BISHOP FAMILY LP I, VOL. 2309, PG. 55
5. WILLIAM D. DOUGLAS, VOL. 1618, PG. 304
6. ISSAC WILLIAMS II, VOL. 1104, PG. 260
7. ROGER JOHNSON, VOL. 600, PG. 193
8. DAPHYNE REED, VOL. 1142, PG. 253
9. CULPEPPER/SPATEX, VOL. 209, PG. 481
10. MICHAEL WHITE-INEZ GIBSON, VOL. 1383, PG. 267
11. MICHAEL WHITE-INEZ GIBSON, VOL. 1383, PG. 273
12. WILLIAM D. DOUGLAS, VOL. 1618, PG. 304
13. MICHAEL WHITE-INEZ GIBSON, VOL. 1383, PG. 270
14. CULPEPPER/SPATEX, VOL. 223, PG. 544
15. DAPHYNE REED, VOL. 1142, PG. 253
16. NORMA LEA BEASLEY, VOL. 940, PG. 196
17. WILLIAM D. DOUGLAS, VOL. 1618, PG. 304

18. CULPEPPER/SPATEX, VOL. 209, PG. 481
19. CULPEPPER/SPATEX, VOL. 226, PG. 274
20. REMAINDER GEORGE MORTON, VOL. 18, PG. 248
21. CAIN DOYLE, VOL. 133, PG. 351
22. ESTELLA GIDDINGS, VOL. 90, PG. 246
23. CULPEPPER/SPATEX, VOL. 241, PG. 278
24. CULPEPPER/SPATEX, VOL. 209, PG. 481
25. R.J.S.D. VOL. 1043, PG. 29
26. ALLEN ANDERSON, VOL. 1728, PG. 326
27. VOL. 1415, PG. 236, VOL. 1415, PG. 227, VOL. 1415, PG. 230, VOL. 1722, PG. 256
28. LENDER AND COOPER, VOL. 91, PG. 320
29. WARDELL BOWMAN, VOL. 165, PG. 790
30. AFFIDAVIT OF HEIRSHIP VOL. 2270, PG. III
31. ERNEST E. FIELDS, VOL. 83, PG. 247
32. MARK A. CARSON-ALLEN ANDERSON, VOL. 1581, PG. 188
33. CULPEPPER/SPATEX, VOL. 209, PG. 475

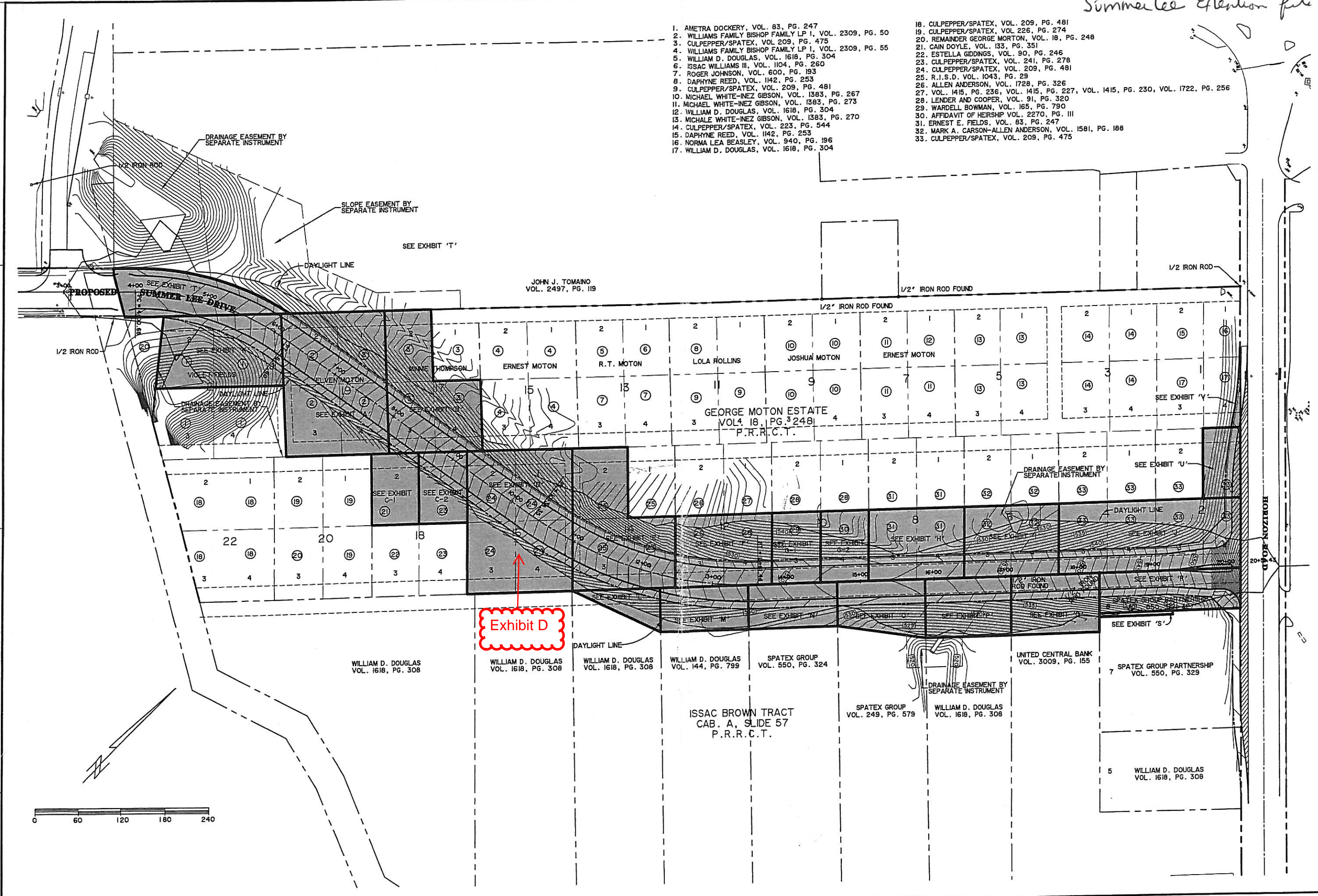
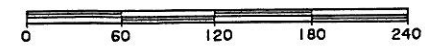
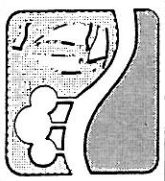


Exhibit D



TIME: 11:13:4 FILE: OVERALL - 03049.dwg

PREPARED BY:
WIER & ASSOCIATES, INC.
 ENGINEERS SURVEYORS & ASSOCIATES LAND PLANNERS
 4300 BELTWAY PLACE, SUITE 130 ARLINGTON, TEXAS 76018 METRO (817)467-7700
 1380 U.S. HIGHWAY 287 N. SUITE 101 WAXSFIELD, TEXAS 76683 METRO (817)477-8700
 8721 5th STREET IRVING, TEXAS 75034 METRO (214)387-8000
 www.wierassociates.com



ROCKWALL

OVERALL OWNERSHIP MAP AND EXHIBIT KEY

PRELIMINARY PLANS FOR PROJECT REVIEW. NOT FOR CONSTRUCTION, BIDDING OR PERMIT PURPOSES.
 Prepared By/Or Under Direct Supervision Of Ronald Ramirez, PE
 Texas Registration No. 81821 On Date Shown Below.

COPYRIGHT © WIER & ASSOCIATES, INC.
 LAST SHEET EDIT DATE 10-15-2004
 WA# 03049

SHEET NO. P101