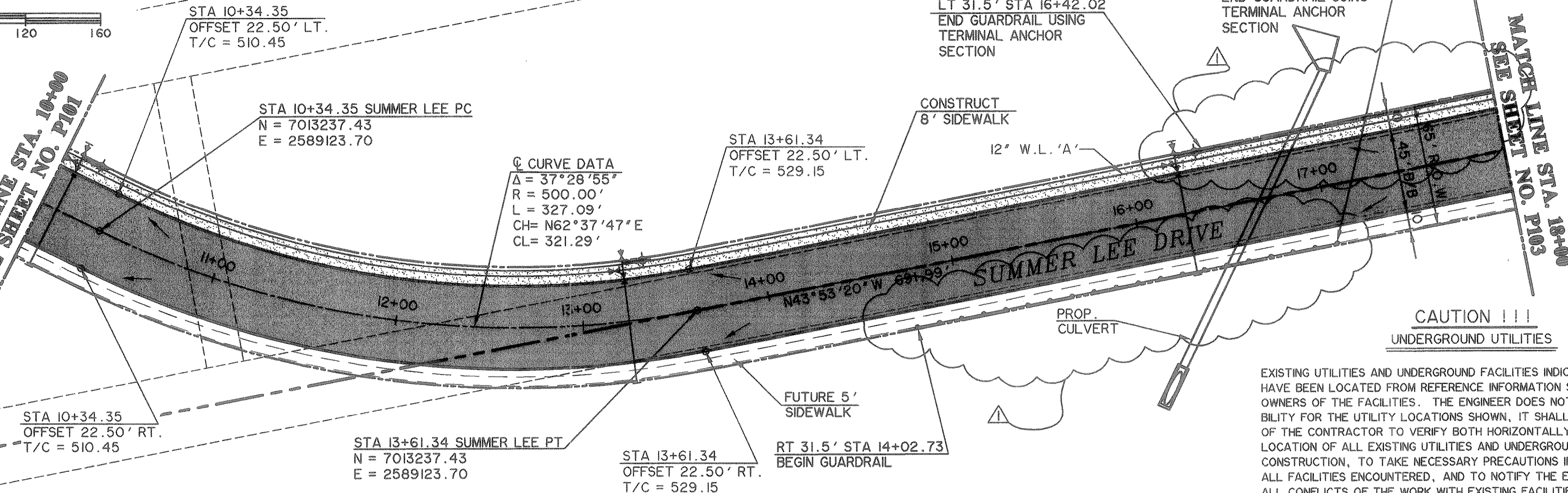


MATCH LINE STA. 10+00  
SEE SHEET NO. P101



ADDED GUARD RAIL 09/29/2005

C CURVE DATA  
 $\Delta = 37^{\circ}28'55''$   
 $R = 500.00'$   
 $L = 327.09'$   
 $CH = N62^{\circ}37'47''E$   
 $CL = 321.29'$

CAUTION !!!  
UNDERGROUND UTILITIES

EXISTING UTILITIES AND UNDERGROUND FACILITIES INDICATED ON THESE PLANS HAVE BEEN LOCATED FROM REFERENCE INFORMATION SUPPLIED BY VARIOUS OWNERS OF THE FACILITIES. THE ENGINEER DOES NOT ACCEPT THE RESPONSIBILITY OF THE CONTRACTOR TO VERIFY BOTH HORIZONTALLY AND VERTICALLY THE LOCATION OF ALL EXISTING UTILITIES AND UNDERGROUND FACILITIES PRIOR TO CONSTRUCTION, TO TAKE NECESSARY PRECAUTIONS IN ORDER TO PROTECT ALL FACILITIES ENCOUNTERED, AND TO NOTIFY THE ENGINEER PROMPTLY OF ALL CONFLICTS OF THE WORK WITH EXISTING FACILITIES. THE CONTRACTOR SHALL PRESERVE AND PROTECT ALL EXISTING UTILITIES FROM DAMAGE DURING CONSTRUCTION. ANY DAMAGE BY THE CONTRACTOR TO EXISTING UTILITIES SHALL BE REPAIRED BY THE CONTRACTOR AT HIS EXPENSE. CONTACT ALL POSSIBLE UTILITY AND UNDERGROUND FACILITY OWNERS.

\* BENCH MARKS \*

PK- NAIL SET IN THE NORTHWEST CORNER OF A CURB INLET AT THE CUL-DE-SAC OF PARKSIDE CIRCLE. 508.44 FT.

X-CUT SET IN CONCRETE AT THE END OF SUMMER LEE DRIVE AND ALSO BEING THE INTERSECTION WITH LAKEFRONT TRAIL. 477.19 FT.

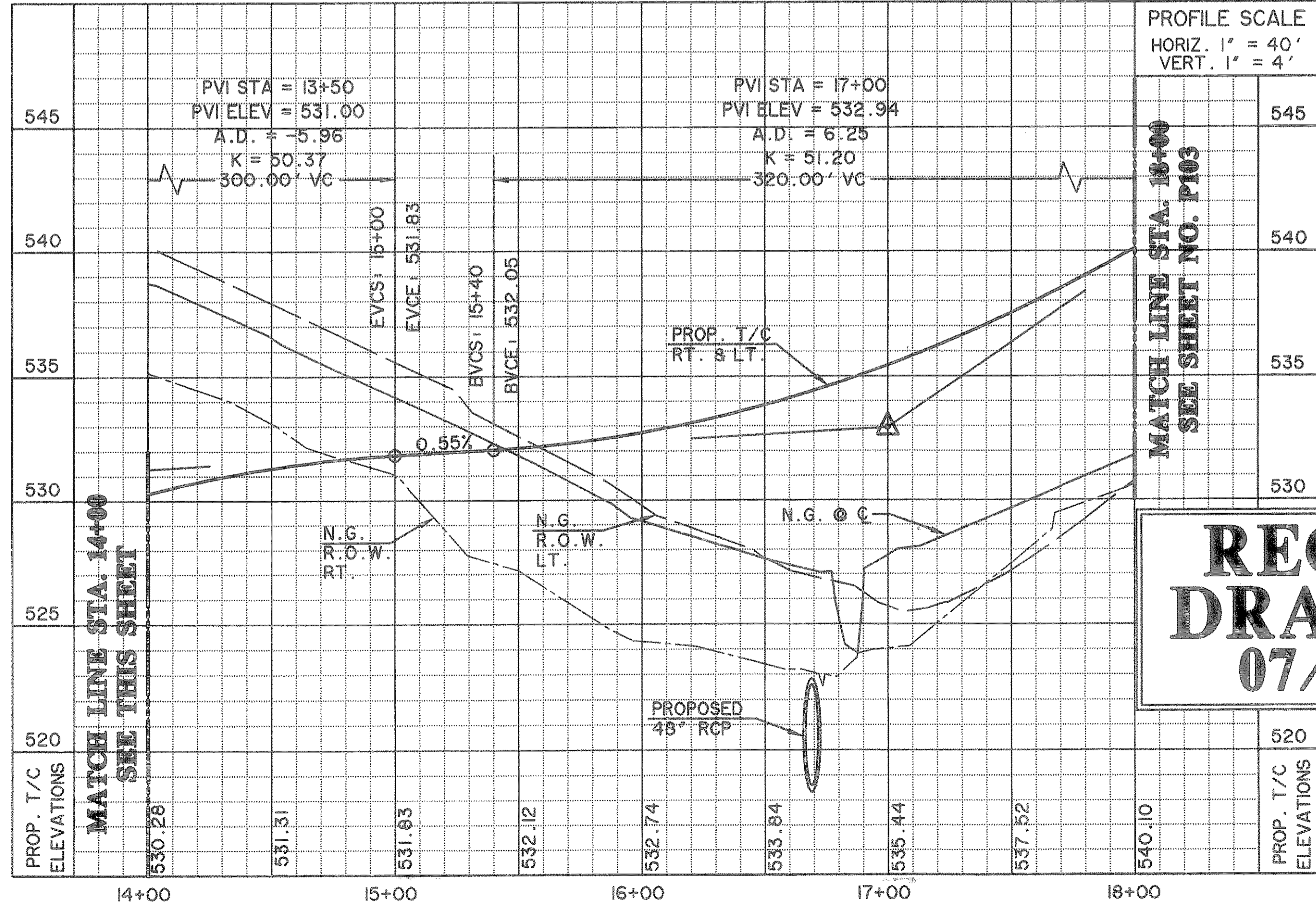
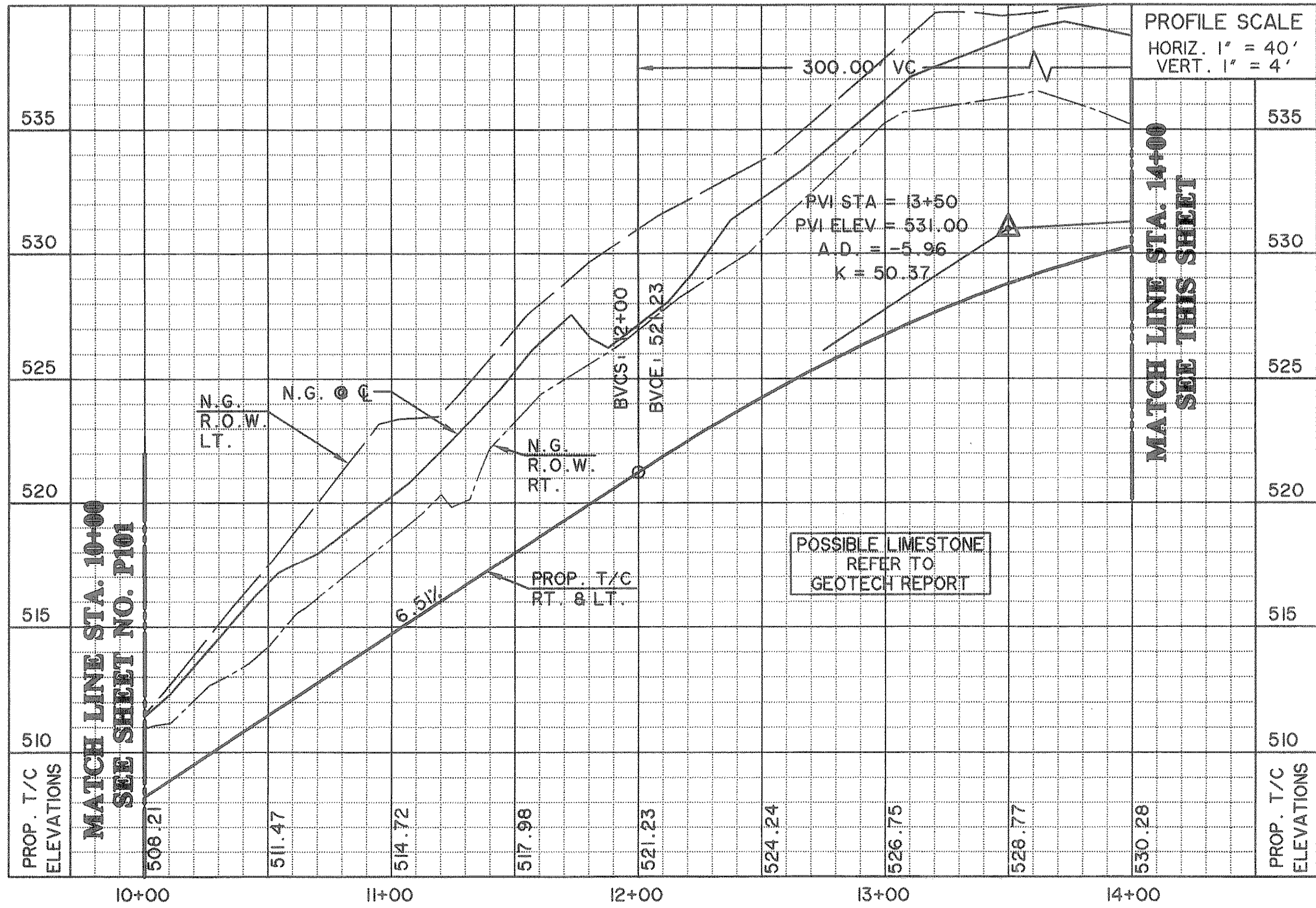
X-CUT SET IN THE NORTHWEST CORNER OF A CURB INLET ALONG THE SOUTHEAST BOUND LAND OF HORIZON ROAD AND BEING SOUTHEASTERLY +/- 485 FEET FROM INTERSTATE 30 EAST BOUND ACCESS ROAD. 550.45 FT.

X-CUT SET IN CONCRETE MEDIAN FOR THE RIGHT HAND TURNING LANE AT THE SOUTHEAST CORNER OF THE INTERSECTION OF THE EAST BOUND ACCESS ROAD OF INTERSTATE 30 AND HORIZON ROAD. 559.94 FT.

LEGEND

- 4200 PSI. CONC. PAVING
- PROPOSED SIDEWALK
- BUILDING LINE
- WATER LINE
- SANITARY SEWER LINE
- STORM DRAIN LINE
- R.O.W. LINE
- LOT LINE
- FIRE HYDRANT
- STORM DRAIN INLET
- WATER VALVES
- DIRECTION OF FLOW

## SUMMER LEE



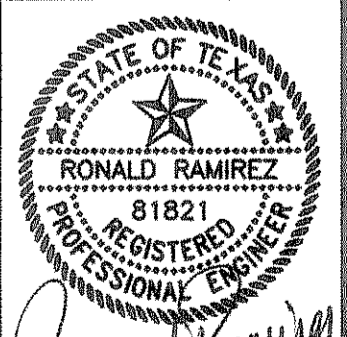
**RECORD DRAWING**  
07/12/06

PREPARED BY:  
**VIA WIER & ASSOCIATES, INC.**  
 ENGINEERS SURVEYORS LAND PLANNERS  
 4300 BELWAY PLACE SUITE 130 ARLINGTON, TEXAS 76018 METRO (817)467-7700  
 1380 U.S. HIGHWAY 287 N. SUITE 101 WANSFORD, TEXAS 76763 METRO (817)477-8700  
 6848 ELM STREET FRODO, TEXAS 75044 METRO (214)387-8000  
 www.viawier.com



CITY OF  
**ROCKWALL**  
 SUMMER LEE DRIVE  
 EXTENSION

PAVING PLAN  
 AND PROFILE  
 STA 10+00 TO 18+00



COPYRIGHT ©  
 WIER & ASSOCIATES, INC.  
 LAST SHEET DWT  
 DATE 08-30-2005  
 WA# 03049  
**SHEET NO. P102**