

CAUTION !!!
UNDERGROUND UTILITIES

EXISTING UTILITIES AND UNDERGROUND FACILITIES INDICATED ON THESE PLANS HAVE BEEN LOCATED FROM REFERENCE INFORMATION SUPPLIED BY VARIOUS OWNERS OF THE FACILITIES. THE ENGINEER DOES NOT ACCEPT THE RESPONSIBILITY FOR THE UTILITY LOCATIONS SHOWN, IT SHALL BE THE RESPONSIBILITY OF THE CONTRACTOR TO VERIFY BOTH HORIZONTALLY AND VERTICALLY THE LOCATION OF ALL EXISTING UTILITIES AND UNDERGROUND FACILITIES PRIOR TO CONSTRUCTION, TO TAKE NECESSARY PRECAUTIONS IN ORDER TO PROTECT ALL FACILITIES ENCOUNTERED, AND TO NOTIFY THE ENGINEER PROMPTLY OF ALL CONFLICTS OF THE WORK WITH EXISTING FACILITIES. THE CONTRACTOR SHALL PRESERVE AND PROTECT ALL EXISTING UTILITIES FROM DAMAGE DURING CONSTRUCTION. ANY DAMAGE BY THE CONTRACTOR TO EXISTING UTILITIES SHALL BE REPAIRED BY THE CONTRACTOR AT HIS EXPENSE. CONTACT ALL POSSIBLE UTILITY AND UNDERGROUND FACILITY OWNERS.

* BENCH MARKS *

PK- NAIL SET IN THE NORTHWEST CORNER OF A CURB INLET AT THE CUL-DE-SAC OF PARKSIDE CIRCLE. 508.44 FT.

X-CUT SET IN CONCRETE AT THE END OF SUMMER LEE DRIVE AND ALSO BEING THE INTERSECTION WITH LAKEFRONT TRAIL. 477.19 FT.

X-CUT SET IN THE NORTHWEST CORNER OF A CURB INLET ALONG THE SOUTHEAST BOUND LAND OF HORIZON ROAD AND BEING SOUTHEASTERLY +/- 485 FEET FROM INTERSTATE 30 EAST BOUND ACCESS ROAD. 550.45 FT.

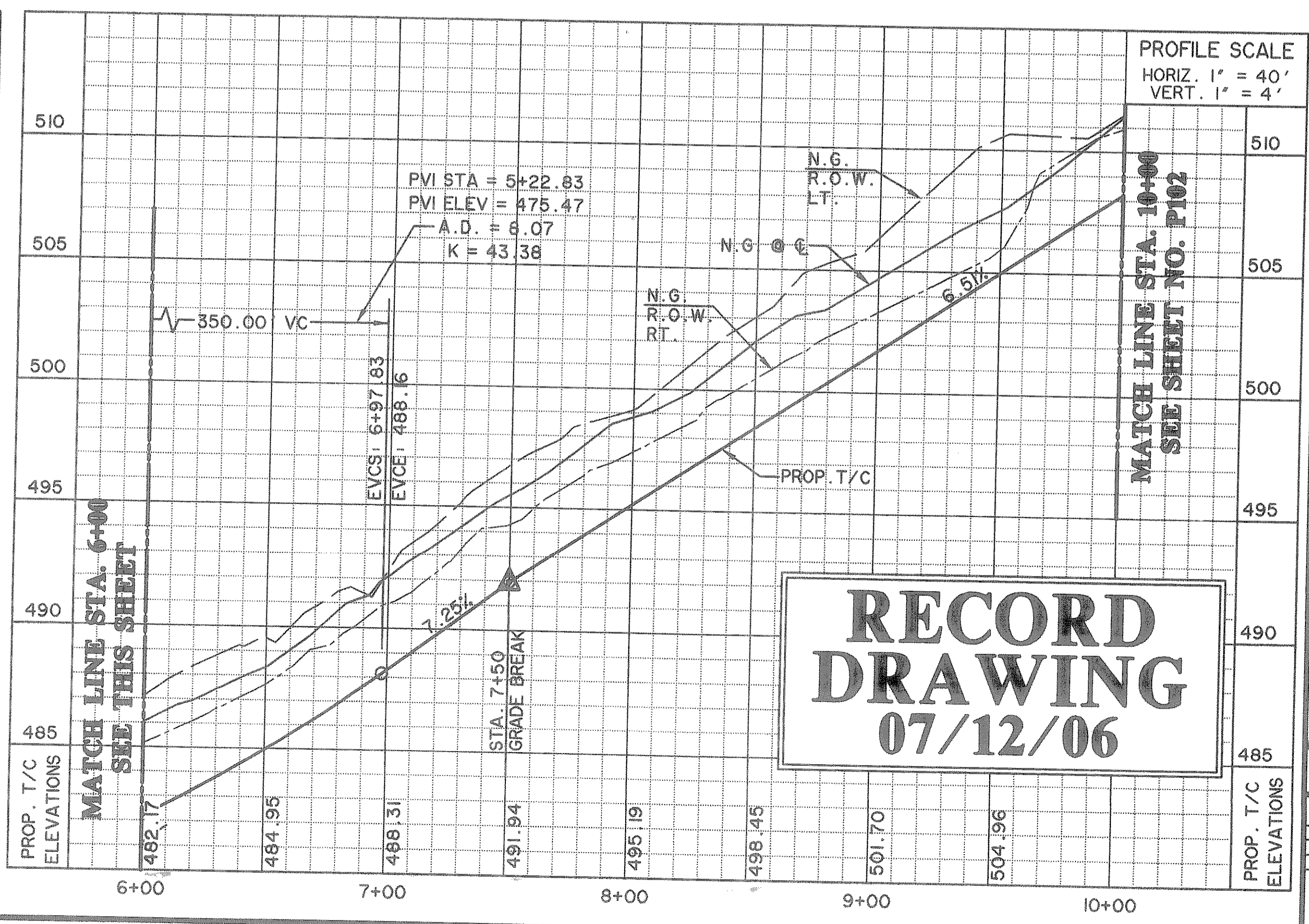
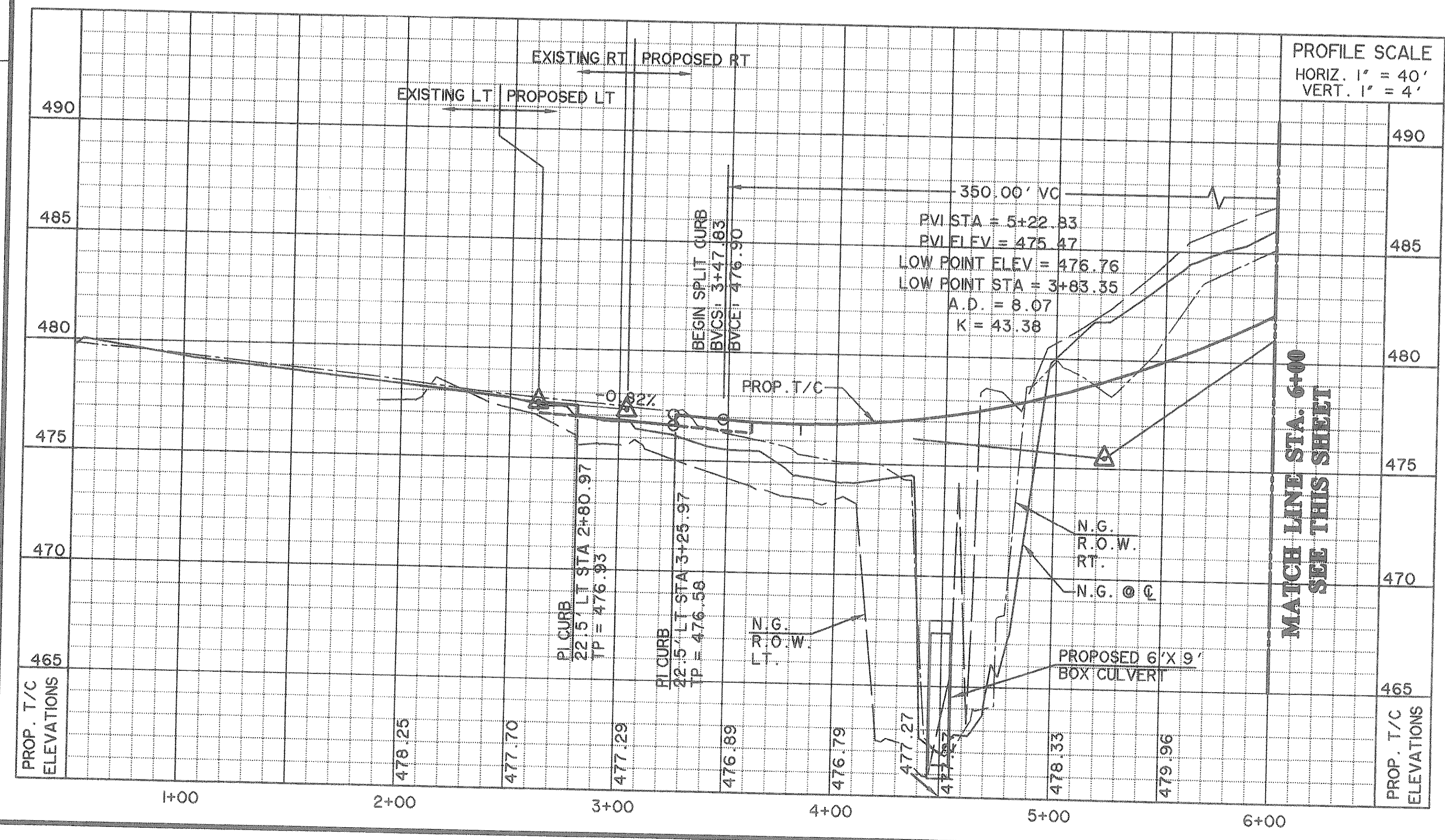
X-CUT SET IN CONCRETE MEDIAN FOR THE RIGHT HAND TURNING LANE AT THE SOUTHEAST CORNER OF THE INTERSECTION OF THE EAST BOUND ACCESS ROAD OF INTERSTATE 30 AND HORIZON ROAD. 559.94 FT.

LEGEND

- PROPOSED PAVEMENT BY CITY
- 4200 PSI. CONC. PAVING
- PROPOSED SIDEWALK
- BUILDING LINE
- WATER LINE
- SANITARY SEWER LINE
- STORM DRAIN LINE
- R.O.W. LINE
- LOT LINE
- FIRE HYDRANT
- STORM DRAIN INLET
- WATER VALVES
- DIRECTION OF FLOW

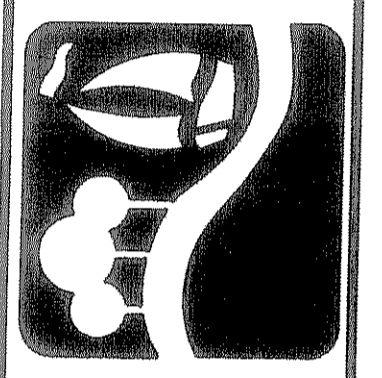
- ① LT 31.5' STA 5+56.06 BEGIN GUARDRAIL WITH SGT END SECTION.
- ② LT 31.5' STA 3+66.03 END GUARDRAIL USING TERMINAL ANCHOR SECTION.
- ③ RT 31.5' STA 4+23.61 BEGIN GUARDRAIL WITH SGT END SECTION.
- ④ RT 31.5' STA 6+13.58 END GUARDRAIL USING TERMINAL ANCHOR SECTION.

S U M M E R L E E



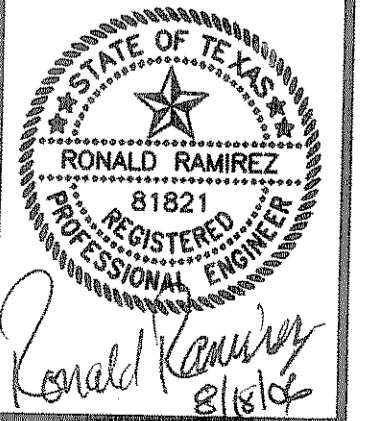
RECORD DRAWING
07/12/06

PREPARED BY:
VIA WIER & ASSOCIATES, INC.
ENGINEERS SURVEYORS LAND PLANNERS
4300 BELTWAY PLACE SUITE 130 ARLINGTON, TEXAS 76018 METRO (817)467-7700
1380 U.S. HIGHWAY 287 N. SUITE 101 WANSFORD, TEXAS 76783 METRO (817)777-8700
6848 ELM STREET FORT WORTH, TEXAS 76104 METRO (214)387-8000
www.viawier.com



CITY OF ROCKWALL
SUMMER LEE DRIVE
EXTENSION

PAVING PLAN AND PROFILE
STA 0+00 TO 10+00



COPYRIGHT ©
VIA WIER & ASSOCIATES, INC.
LAST SHEET OF 11
DATE 07-12-2006
WA# 03049
SHEET NO. P101

TIME 15.34 FILE: RI-PAVI-03049.dwg