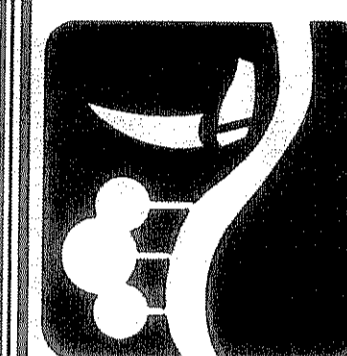


**DETAILED GRADING PLAN
SUMMER LEE DRIVE/HORIZON ROAD INTERSECTION**

**CAUTION !!!
UNDERGROUND UTILITIES**

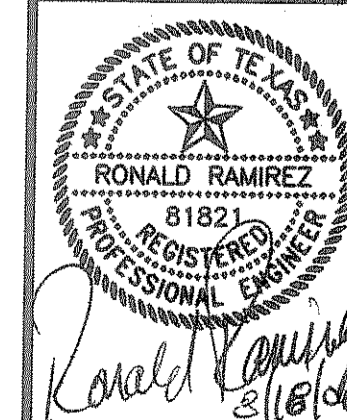
EXISTING UTILITIES AND UNDERGROUND FACILITIES INDICATED ON THESE PLANS HAVE BEEN LOCATED FROM REFERENCE INFORMATION SUPPLIED BY VARIOUS OWNERS OF THE FACILITIES. THE ENGINEER DOES NOT ACCEPT THE RESPONSIBILITY FOR THE UTILITY LOCATIONS SHOWN, IT SHALL BE THE RESPONSIBILITY OF THE CONTRACTOR TO VERIFY BOTH HORIZONTALLY AND VERTICALLY THE LOCATION OF ALL EXISTING UTILITIES AND UNDERGROUND FACILITIES PRIOR TO CONSTRUCTION, TO TAKE NECESSARY PRECAUTIONS IN ORDER TO PROTECT ALL FACILITIES ENCOUNTERED, AND TO NOTIFY THE ENGINEER PROMPTLY OF ALL CONFLICTS OF THE WORK WITH EXISTING FACILITIES. THE CONTRACTOR SHALL PRESERVE AND PROTECT ALL EXISTING UTILITIES FROM DAMAGE DURING CONSTRUCTION. ANY DAMAGE BY THE CONTRACTOR TO EXISTING UTILITIES SHALL BE REPAIRED BY THE CONTRACTOR AT HIS EXPENSE. CONTACT ALL POSSIBLE UTILITY AND UNDERGROUND FACILITY OWNERS.

PREPARED BY:
VIA WIER & ASSOCIATES, INC.
ENGINEERS SURVEYORS LAND PLANNERS
4300 BELWAY PLACE SUITE 130 ARLINGTON TEXAS 76018 METRO (817)467-7700
1380 U.S. HIGHWAY 287 N. SUITE 101 WAXFELD, TEXAS 76083 METRO (817)477-9700
6849 ELM STREET FRISCO, TEXAS 75034 METRO (214)387-8000
www.viawier.com



CITY OF
ROCKWALL
SUMMER LEE DRIVE
EXTENSION

GRADING PLAN



COPYRIGHT ©
WIER & ASSOCIATES, INC.
LAST SHEET EDIT
DATE 06-01-2005
WA# 03049

**SHEET NO.
G102**

BENCH MARKS

PK- NAIL SET IN THE NORTHWEST CORNER OF A CURB INLET AT THE CUL-DE-SAC OF PARKSIDE CIRCLE.
508.44 FT.

X-CUT SET IN CONCRETE AT THE END OF SUMMER LEE DRIVE AND ALSO BEING THE INTERSECTION WITH LAKEFRONT TRAIL.
477.19 FT.

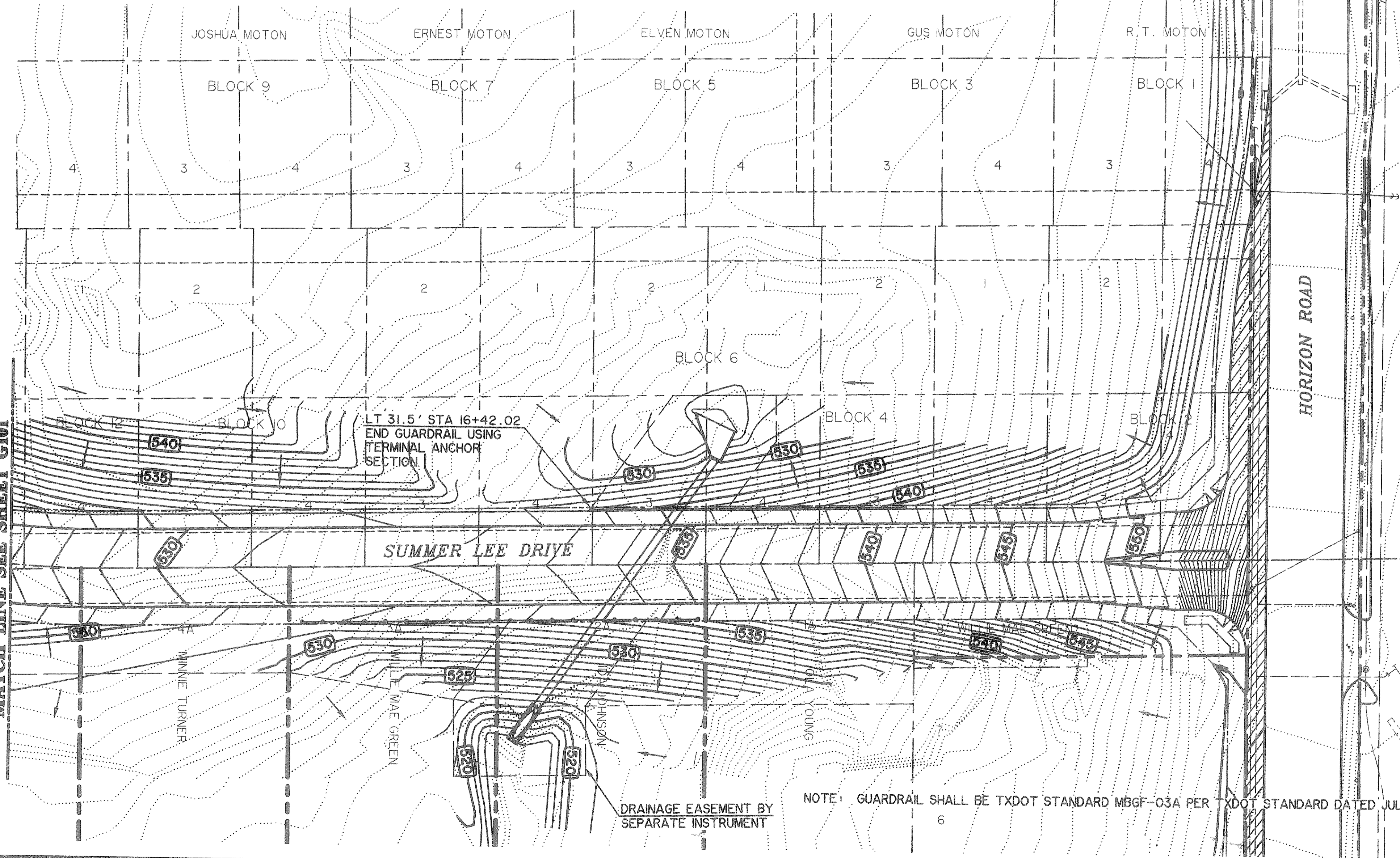
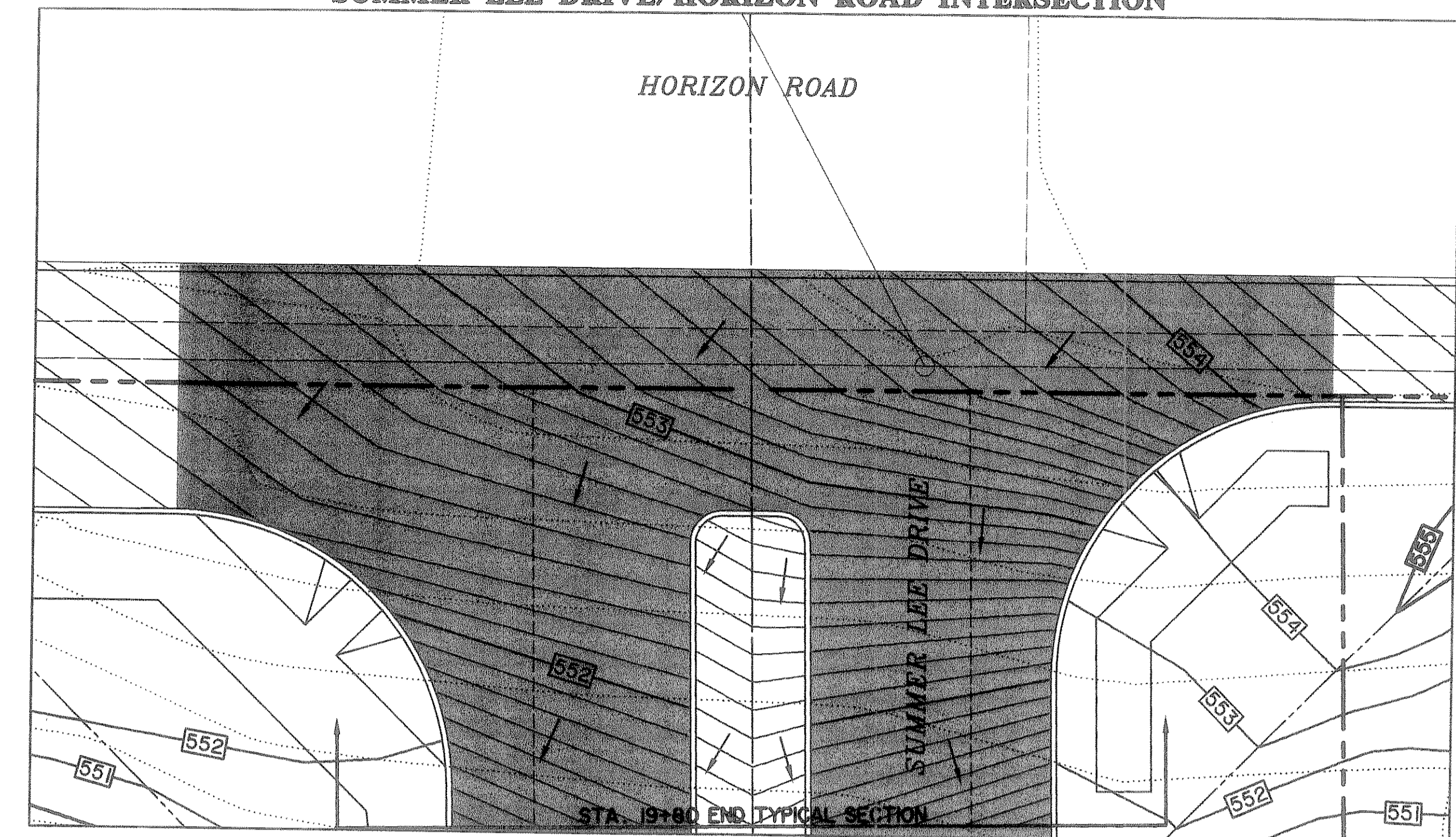
X-CUT SET IN THE NORTHWEST CORNER OF A CURB INLET ALONG THE SOUTHEAST BOUND LAND OF HORIZON ROAD AND BEING SOUTHEASTERLY +/- 485 FEET FROM INTERSTATE 30 EAST BOUND ACCESS ROAD.
550.45 FT.

X-CUT SET IN CONCRETE MEDIAN FOR THE RIGHT HAND TURNING LANE AT THE SOUTHEAST CORNER OF THE INTERSECTION OF THE EAST BOUND ACCESS ROAD OF INTERSTATE 30 AND HORIZON ROAD.
559.94 FT.

LEGEND

	PROPOSED WATER LINE
	PROPOSED STORM DRAIN
	EXIST. SANITARY SEWER
	EXIST. WATER LINE
	EXIST. OVERHEAD ELECTRIC
	EXIST. UNDERGROUND ELEC.
	R.O.W. LINE
	LOT LINE
	FIRE HYDRANT
	STORM DRAIN INLET
	SANITARY SEWER MANHOLE
	WATER VALVES
	DIRECTION OF FLOW
	EXISTING MAJOR CONTOUR
	EXISTING MINOR CONTOUR
	PROPOSED MAJOR CONTOUR
	PROPOSED MINOR CONTOUR

**RECORD
DRAWING
07/12/06**



TIME 11:35 FILE: GRADING2.dwg

DRAINAGE EASEMENT BY SEPARATE INSTRUMENT

NOTE: GUARDRAIL SHALL BE TXDOT STANDARD MBGF-03A PER TXDOT STANDARD DATED JULY 1994.