

STA. 18+71.74 W.L. "A"
= 29' LT ST. STA. 19+48.34
N=7013967.29, E=2590397.41
INSTALL:
1- 1" TAP FOR IRRIGATION
1- 1" WM IN MEDIAN
29 LF 1" PVC

STA 19+11.49 W.L. "A"
N=7014016.71
E=2590416.74

STA 19+49.50 W.L. "A"
= 32.41' LT ST STA 20+5.91
CONNECT TO EXIST. 12" W.L.
INSTALL:
1- 12" x 12" TAPPING
SLEEVE AND VALVE
N=7014045.53
E=2590448.75

STA 19+44.50 W.L. "A"
INSTALL:
1- 12" GATE VALVE
N=7014041.98
E=2590445.23

STA. 18+50
N=7013970.61, E=2590383.50
INSTALL:
1- 12" X 8" CROSS
1- 8" X 6" TEE
1- 12" GATE VALVE
2- 8" GATE VALVE
1- 6" GATE VALVE
1- STD. F.H. ASSEMBLY
2- 8" CAP & THRUST BLOCK
5 LF OF 8" WL STUB N
60 LF OF 8" WL STUB S

STA 18+56.34 W.L. "A"
N=7013975.18
E=2590387.89

CAUTION !!!
UNDERGROUND UTILITIES

EXISTING UTILITIES AND UNDERGROUND FACILITIES INDICATED ON THESE PLANS HAVE BEEN LOCATED FROM REFERENCE INFORMATION SUPPLIED BY VARIOUS OWNERS OF THE FACILITIES. THE ENGINEER DOES NOT ACCEPT THE RESPONSIBILITY FOR THE UTILITY LOCATIONS SHOWN, IT SHALL BE THE RESPONSIBILITY OF THE CONTRACTOR TO VERIFY BOTH HORIZONTALLY AND VERTICALLY THE LOCATION OF ALL EXISTING UTILITIES AND UNDERGROUND FACILITIES PRIOR TO CONSTRUCTION, TO TAKE NECESSARY PRECAUTIONS IN ORDER TO PROTECT ALL FACILITIES ENCOUNTERED, AND TO NOTIFY THE ENGINEER PROMPTLY OF ALL CONFLICTS OF THE WORK WITH EXISTING FACILITIES. THE CONTRACTOR SHALL PRESERVE AND PROTECT ALL EXISTING UTILITIES FROM DAMAGE DURING CONSTRUCTION. ANY DAMAGE BY THE CONTRACTOR TO EXISTING UTILITIES SHALL BE REPAIRED BY THE CONTRACTOR AT HIS EXPENSE. CONTACT ALL POSSIBLE UTILITY AND UNDERGROUND FACILITY OWNERS.

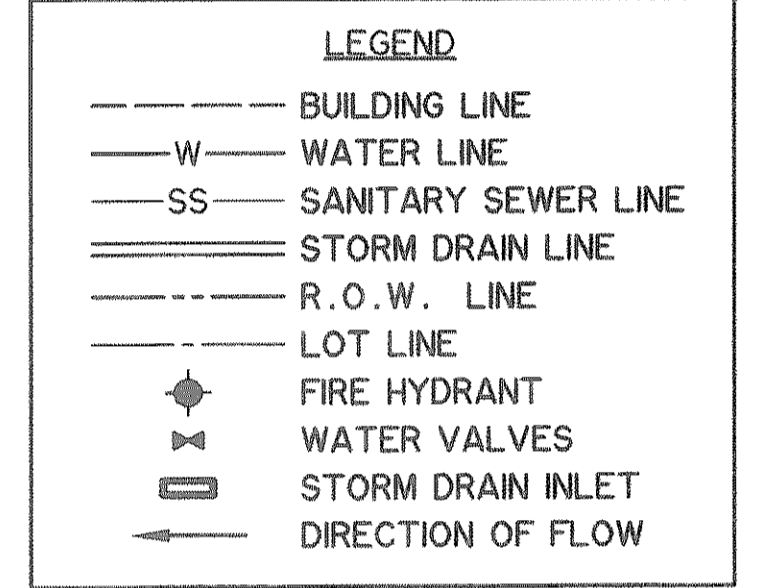
*** BENCH MARKS ***

PK- NAIL SET IN THE NORTHWEST CORNER OF A CURB INLET AT THE CUL-DE-SAC OF PARKSIDE CIRCLE.
508.44 FT.

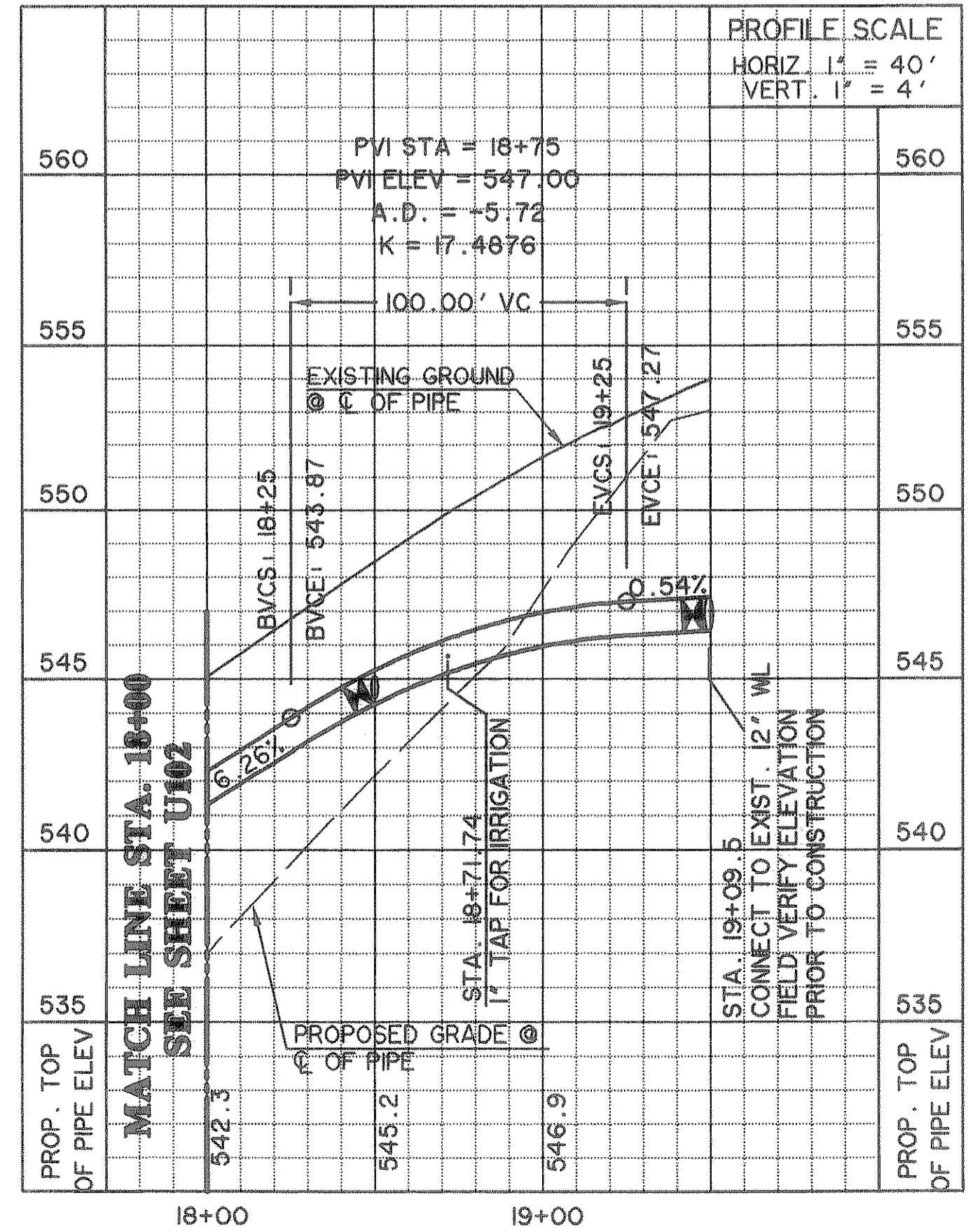
X-CUT SET IN CONCRETE AT THE END OF SUMMER LEE DRIVE AND ALSO BEING THE INTERSECTION WITH LAKEFRONT TRAIL.
477.19 FT.

X-CUT SET IN THE NORTHWEST CORNER OF A CURB INLET ALONG THE SOUTHEAST BOUND LAND OF HORIZON ROAD AND BEING SOUTHEASTERLY +/- 485 FEET FROM INTERSTATE 30 EAST BOUND ACCESS ROAD.
550.45 FT.

X-CUT SET IN CONCRETE MEDIAN FOR THE RIGHT HAND TURNING LANE AT THE SOUTHEAST CORNER OF THE INTERSECTION OF THE EAST BOUND ACCESS ROAD OF INTERSTATE 30 AND HORIZON ROAD.
559.94 FT.



WATER LINE A



PROFILE SCALE
HORIZ. 1" = 40'
VERT. 1" = 4'

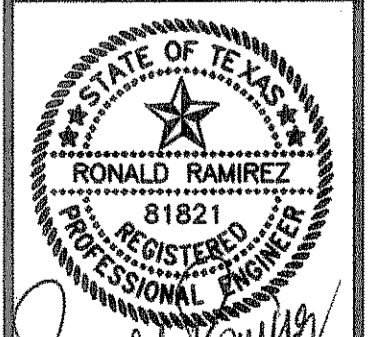
**RECORD
DRAWING**
07/12/06

PREPARED BY:
VIA WIER & ASSOCIATES, INC.
ENGINEERS SURVEYORS LAND PLANNERS
4300 BELLEVUE PLACE SUITE 1300 ARLINGTON, TEXAS 76018 METRO (817)467-7700
1300 U.S. HIGHWAY 281 N. SUITE 101 WINGFIELD, TEXAS 76063 METRO (817)477-8700
6849 ELM STREET FRODO, TEXAS 75034 METRO (214)397-8000
www.viawier.com



CITY OF
ROCKWALL
SUMMER LEE DRIVE
EXTENSION

WATER LINE 'A'
PLAN AND PROFILE
STA 11+00 TO 19+49.49



COPYRIGHT ©
WIER & ASSOCIATES, INC.
LAST SHEET EDIT
DATE 07-09-2006
WA# 03049
SHEET NO.
U103