

CAUTION !!!
UNDERGROUND UTILITIES

EXISTING UTILITIES AND UNDERGROUND FACILITIES INDICATED ON THESE PLANS HAVE BEEN LOCATED FROM REFERENCE INFORMATION SUPPLIED BY VARIOUS OWNERS OF THE FACILITIES. THE ENGINEER DOES NOT ACCEPT THE RESPONSIBILITY FOR THE UTILITY LOCATIONS SHOWN, IT SHALL BE THE RESPONSIBILITY OF THE CONTRACTOR TO VERIFY BOTH HORIZONTALLY AND VERTICALLY THE LOCATION OF ALL EXISTING UTILITIES AND UNDERGROUND FACILITIES PRIOR TO CONSTRUCTION, TO TAKE NECESSARY PRECAUTIONS IN ORDER TO PROTECT ALL FACILITIES ENCOUNTERED, AND TO NOTIFY THE ENGINEER PROMPTLY OF ALL CONFLICTS OF THE WORK WITH EXISTING FACILITIES. THE CONTRACTOR SHALL PRESERVE AND PROTECT ALL EXISTING UTILITIES FROM DAMAGE DURING CONSTRUCTION. ANY DAMAGE BY THE CONTRACTOR TO EXISTING UTILITIES SHALL BE REPAIRED BY THE CONTRACTOR AT HIS EXPENSE. CONTACT ALL POSSIBLE UTILITY AND UNDERGROUND FACILITY OWNERS.

* BENCH MARKS *

PK- NAIL SET IN THE NORTHWEST CORNER OF A CURB INLET AT THE CUL-DE-SAC OF PARKSIDE CIRCLE.
508.44 FT.

X-CUT SET IN CONCRETE AT THE END OF SUMMER LEE DRIVE AND ALSO BEING THE INTERSECTION WITH LAKEFRONT TRAIL.
477.19 FT.

X-CUT SET IN THE NORTHWEST CORNER OF A CURB INLET ALONG THE SOUTHEAST BOUND LAND OF HORIZON ROAD AND BEING SOUTHEASTERLY +/- 485 FEET FROM INTERSTATE 30 EAST BOUND ACCESS ROAD.
550.45 FT.

X-CUT SET IN CONCRETE MEDIAN FOR THE RIGHT HAND TURNING LANE AT THE SOUTHEAST CORNER OF THE INTERSECTION OF THE EAST BOUND ACCESS ROAD OF INTERSTATE 30 AND HORIZON ROAD.
559.94 FT.

LEGEND

- 4200 PSI. CONC. PAVING
- SIDEWALK
- RETAINING WALL
- BUILDING LINE
- WATER LINE
- SANITARY SEWER LINE
- STORM DRAIN LINE
- R.O.W. LINE
- LOT LINE
- FIRE HYDRANT
- STORM DRAIN INLET
- SANITARY SEWER MANHOLE
- WATER VALVES
- DIRECTION OF FLOW
- 550.00 TP EXISTING SPOT ELEVATION
- 550.00 TC PROPOSED SPOT ELEVATION



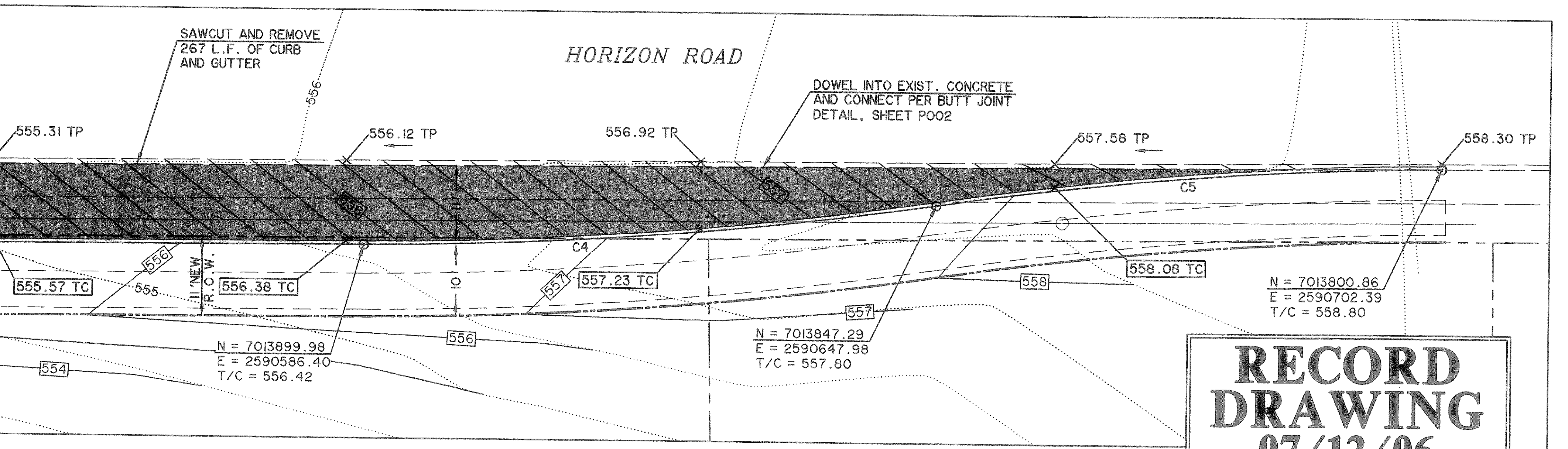
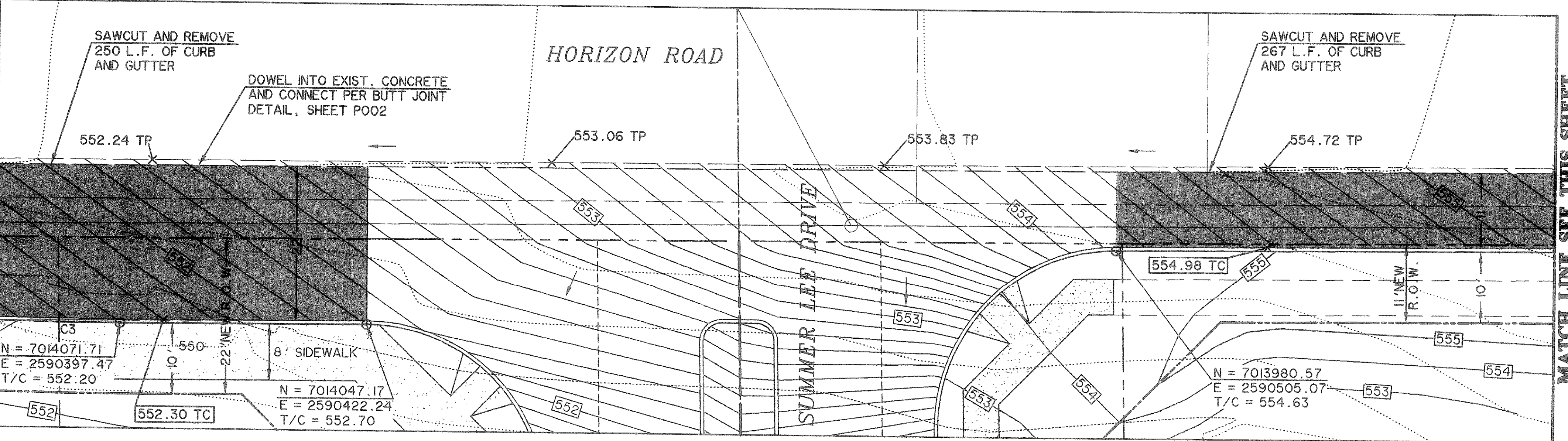
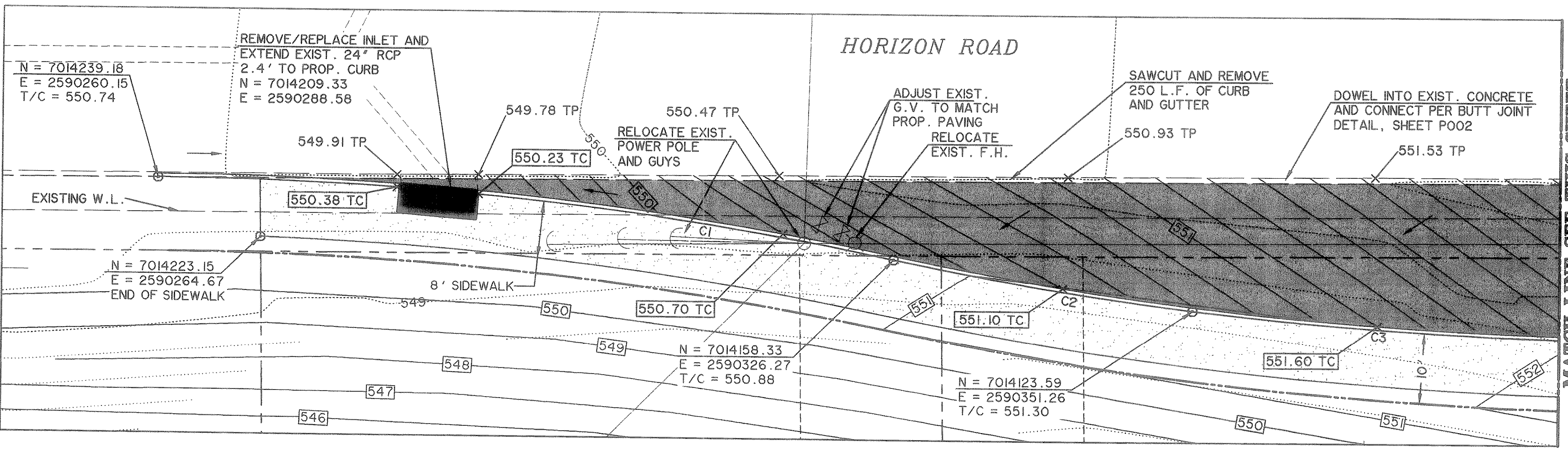
NOTE:

- CONTRACTOR SHALL COORDINATE WITH ALL FRANCHISE UTILITY COMPANIES PRIOR TO CONSTRUCTION AND DETERMINE THE SCHEDULE AND METHODS FOR ANY RELOCATIONS. RELOCATIONS SHALL BE SUBSIDIARY TO PAVEMENT CONSTRUCTION.
- ADJUSTMENTS TO VALVE BOXES, MANHOLE RIMS, VALVE RISERS, ETC. SHALL BE PAID PER UNIT ACCORDING TO THE SPECIFICATIONS.

CURVE TABLE

CURVE	DELTA	RADIUS	LENGTH	TANGENT	CHORD BEARING	CHORD LENGTH
C1	11°59'55"	500.50	104.71	52.55	S39°16'29"E	104.52
C2	04°53'58"	500.00	42.76	21.39	S5°43'31"E	42.74
C3	07°01'55"	566.00	69.47	34.78	S41°41'27"E	69.42
C4	08°22'01"	555.00	81.05	40.60	S49°26'46"E	80.98
C5	08°12'42"	500.00	71.66	35.89	S49°31'25"E	71.60

RECORD DRAWING
07/12/06

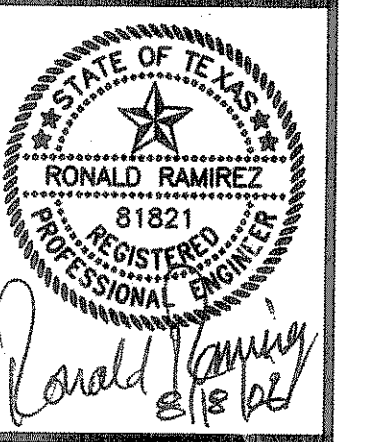


PREPARED BY:
VIA WIER & ASSOCIATES, INC.
ENGINEERS SURVEYORS LAND PLANNERS
4300 BELWAY PLACE SUITE 130 ARLINGTON, TEXAS 76018 METRO (817)467-7700
1380 U.S. HIGHWAY 287 N. SUITE 01 WANSFELD, TEXAS 76763 METRO (817)477-0700
6849 ELM STREET FRISCO, TEXAS 75034 METRO (214)387-8000
www.viawier.com



CITY OF
ROCKWALL
SUMMER LEE DRIVE
EXTENSION

PAVING PLAN
HORIZON ROAD



COPYRIGHT ©
WIER & ASSOCIATES, INC.
LAST SHEET EDIT
DATE 02-11-2005
WAR 03049
SHEET NO. P104

FILE: PAV-INTERSECTION.dwg
TIME: 11:14:11