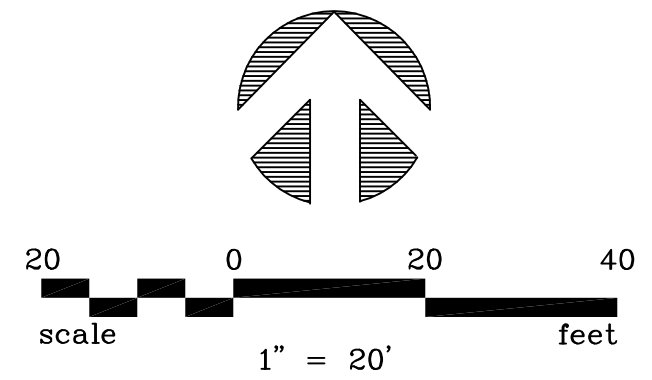
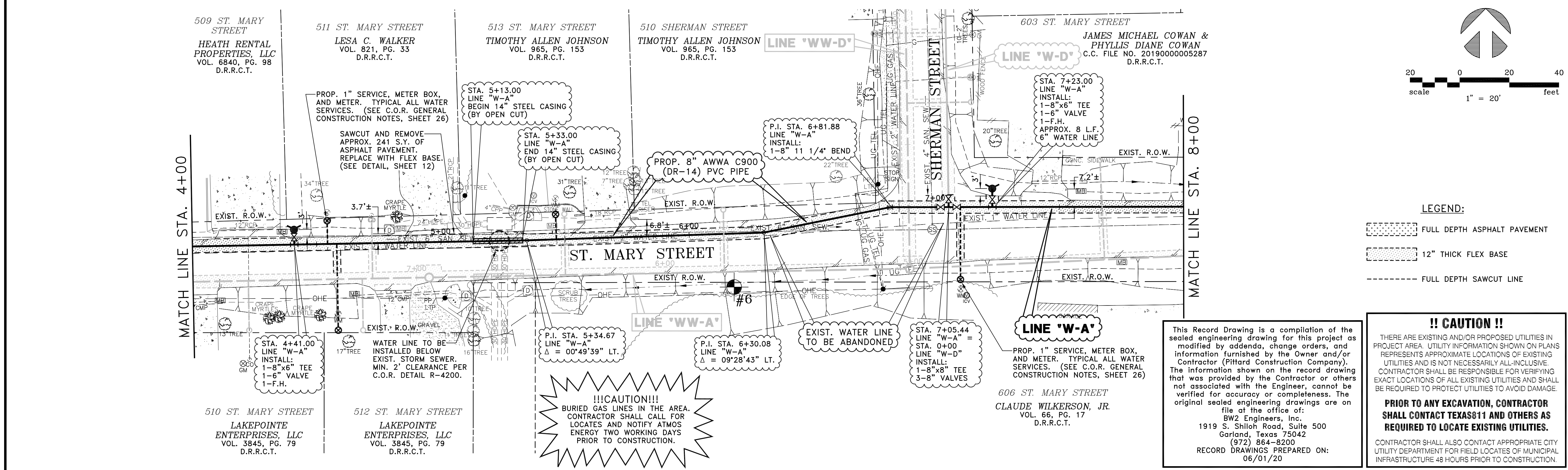


WATER LINE "W-A"

STATION	NORTHING(Y)	EASTING(X)
BEGIN STA. 0+00	7025864.6372	2594917.4149
P.I. STA. 0+91.98	7025864.6372	2595009.3937
P.I. STA. 1+25.35	7025871.1468	2595042.1195
STA. 2+29.32	7025873.0587	2595146.0804
P.I. STA. 2+77.98	7025873.9535	2595194.7311
P.I. STA. 2+99.66	7025878.5722	2595215.9080
P.I. STA. 5+34.67	7025882.8936	2595450.8769
P.I. STA. 6+30.08	7025886.0256	2595546.2382
P.I. STA. 6+81.88	7025896.2289	2595597.0257
STA. 7+05.44	7025896.2740	2595620.5849

HORIZONTAL AND VERTICAL CONTROL POINTS

CP#	NORTHING(Y)	EASTING(X)	ELEVATION(Z)	DESCRIPTION
2	7025820.9270	2594877.8170	572.13	1/2" I.R. W/CAP
3	7025885.7550	2595113.0590	562.01	1/2" I.R. W/CAP
6	7025864.0870	2595534.2700	547.24	1/2" I.R. W/CAP



LEGEND:

- FULL DEPTH ASPHALT PAVEMENT
- 12" THICK FLEX BASE
- FULL DEPTH SAWCUT LINE

This Record Drawing is a compilation of the sealed engineering drawing for this project as modified by addenda, change orders, and information furnished by the Owner and/or Contractor (Pittard Construction Company). The information shown on the record drawing that was provided by the Contractor or others not associated with the Engineer, cannot be verified for accuracy or completeness. The original sealed engineering drawings are on file at the office of:
 BW2 Engineers, Inc.
 1919 S. Shiloh Road, Suite 500
 Garland, Texas 75042
 (972) 864-8200
 RECORD DRAWINGS PREPARED ON:
 06/01/20

!! CAUTION !!

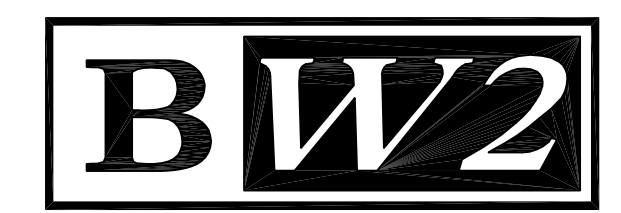
THERE ARE EXISTING AND/OR PROPOSED UTILITIES IN PROJECT AREA. UTILITY INFORMATION SHOWN ON PLANS REPRESENTS APPROXIMATE LOCATIONS OF EXISTING UTILITIES AND IS NOT NECESSARILY ALL-INCLUSIVE. CONTRACTOR SHALL BE RESPONSIBLE FOR VERIFYING EXACT LOCATIONS OF ALL EXISTING UTILITIES AND SHALL BE REQUIRED TO PROTECT UTILITIES TO AVOID DAMAGE.

PRIOR TO ANY EXCAVATION, CONTRACTOR SHALL CONTACT TEXAS811 AND OTHERS AS REQUIRED TO LOCATE EXISTING UTILITIES.

CONTRACTOR SHALL ALSO CONTACT APPROPRIATE CITY UTILITY DEPARTMENT FOR FIELD LOCATES OF MUNICIPAL INFRASTRUCTURE 48 HOURS PRIOR TO CONSTRUCTION.

NO.	DATE	REVISION	REVIEWED
6			
5			
4			
3			
2			
1	06/01/20	REVISED PER CONTRACTOR MARKUPS	MRB

DRAWN: BW2
 DESIGN: MRB
 REVIEWED: JFW
 SCALE: 1" = 20'
 DATE: OCTOBER 2019
 DWG. NAME: 1933WTR01STMARY



BW2 ENGINEERS, INC.
 1919 S. Shiloh Road
 Suite 500, L.B. 27
 Garland, Texas 75042
 (972) 864-8200 (T) (972) 864-8220 (F)
 Firm Registration No. F-5290

THE SEAL THAT ORIGINALLY APPEARED ON THIS DOCUMENT WAS AUTHORIZED BY MICHAEL R. BURGE, TEXAS P.E. 41290 ON 10/11/19. ALTERATION OF A SEALED DOCUMENT WITHOUT PROPER NOTIFICATION OF THE RESPONSIBLE ENGINEER IS AN OFFENSE UNDER THE TEXAS ENGINEERING PRACTICE ACT.

WATER LINE AND WASTEWATER LINE REPLACEMENT PROJECT
 (ST. MARY STREET, BOST STREET, AND SHERMAN STREET)
 LINE "W-A" - STA. 0+00 TO STA. 8+00
CITY OF ROCKWALL

SHEET NO. 9
 OF 29 SHEETS
 JOB NO. 19-1933