

WATER LINE "W-B"

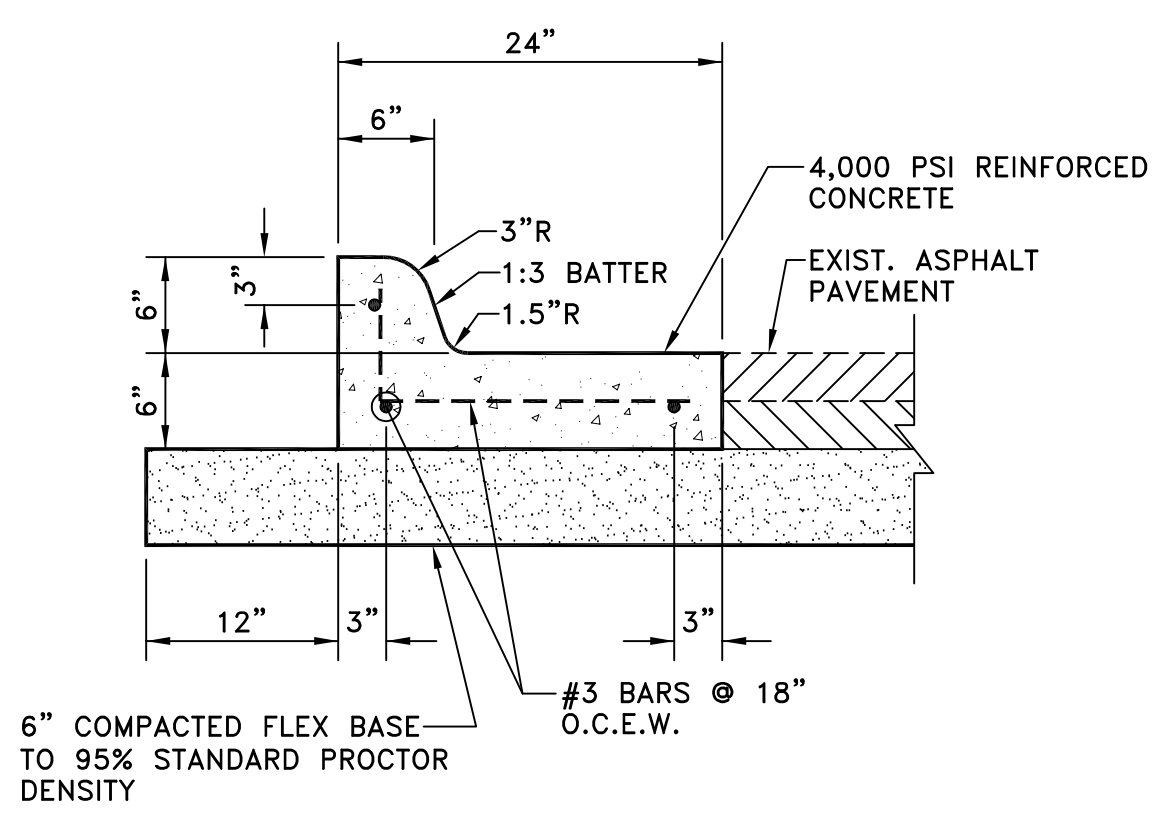
STATION	NORTHING(Y)	EASTING(X)
STA. 9+08.56	7026275.6558	2595129.2165
END STA. 9+27.06	7026294.1560	2595128.9170

WATER LINE "W-C"

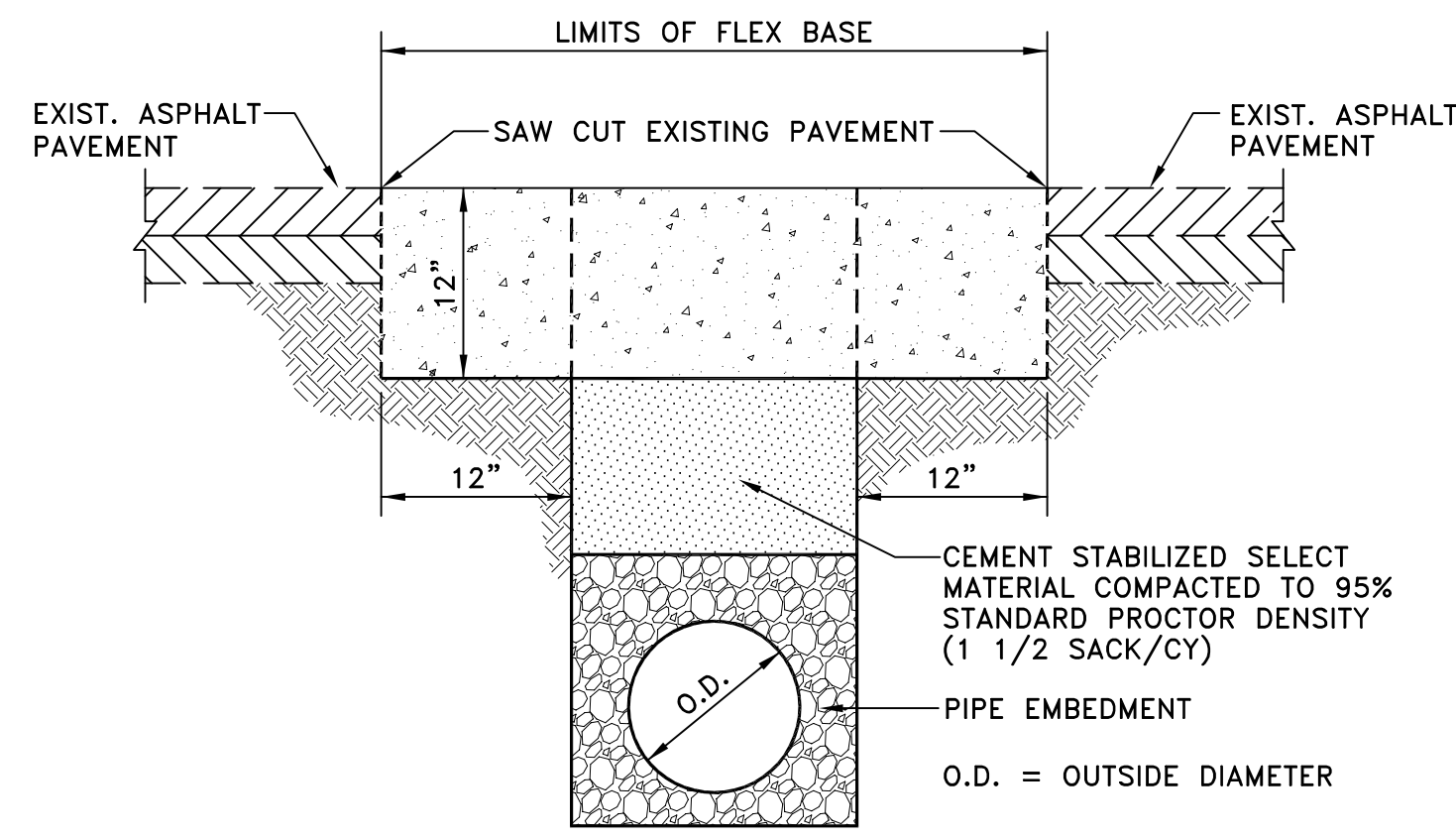
STATION	NORTHING(Y)	EASTING(X)
BEGIN STA. 0+00	7026279.1830	2595036.9230
P.I. STA. 0+02.20	7026279.1982	2595039.1228
P.I. STA. 0+09.27	7026274.2798	2595044.2030
STA. 0+94.30	7026275.6558	2595129.2165
END STA. 1+17.00	7026276.0233	2595151.9180

HORIZONTAL AND VERTICAL CONTROL POINTS

CP#	NORTHING(Y)	EASTING(X)	ELEVATION(Z)	DESCRIPTION
12	7026255.3560	2595104.0950	561.49	X CUT



CONCRETE CURB AND GUTTER
NOT TO SCALE



TYPICAL FLEX BASE DETAIL
NOT TO SCALE

NOTES:

1. ASPHALT PAVEMENT DAMAGED DURING CONSTRUCTION DUE TO CONSTRUCTION OR THE TRANSPORT OF MATERIALS SHALL BE REPAIRED TO AS GOOD OR BETTER CONDITION THAN BEFORE CONSTRUCTION TOOK PLACE.
2. IN LIEU OF CEMENT STABILIZED SELECT MATERIAL COMPACTED TO 95% STANDARD PROCTOR DENSITY, CONTRACTOR MAY FURNISH AND INSTALL SELECT BACKFILL MATERIAL WITH P.I. LESS THAN 12 COMPACTED TO 95% STANDARD PROCTOR DENSITY.
3. NATIVE MATERIALS SHALL NOT BE USED AS THE SELECT MATERIALS FOR THE CEMENT STABILIZED SELECT MATERIAL BETWEEN THE EMBEDMENT AND THE CEMENT TREATED BASE.
4. FLEX BASE SHALL BE COMPACTED TO 95% STANDARD PROCTOR DENSITY AND COVERED WITH AN ASPHALT EMULSION TO CONTROL DUST AND RUTTING.
5. THE PIPE EMBEDMENT SHALL BE CLASS "H" EMBEDMENT (PER C.O.R. DETAIL R-3060) FOR PROPOSED SANITARY SEWER LINE AND CLASS "B-3" EMBEDMENT (PER C.O.R. DETAIL R-3030) FOR PROPOSED WATER LINE.
6. THE SAWCUT IN THE ASPHALT PAVEMENT SHALL BE ONE (1) FOOT BEYOND THE TRENCH LINE ON EACH SIDE OF THE TRENCH AND THE 12" FLEX BASE SHALL BE INSTALLED FROM SAWCUT LINE TO SAWCUT LINE.

LEGEND:

- FULL DEPTH ASPHALT PAVEMENT
- 12" THICK FLEX BASE
- FULL DEPTH SAWCUT LINE

This Record Drawing is a compilation of the sealed engineering drawing for this project as modified by addenda, change orders, and information furnished by the Owner and/or Contractor (Pittard Construction Company). The information shown on the record drawing that was provided by the Contractor or others not associated with the Engineer, cannot be verified for accuracy or completeness. The original sealed engineering drawings are on file at the office of:
 BW2 Engineers, Inc.
 1919 S. Shiloh Road, Suite 500
 Garland, Texas 75042
 (972) 864-8200
 RECORD DRAWINGS PREPARED ON:
 06/01/20

!! CAUTION !!
 THERE ARE EXISTING AND/OR PROPOSED UTILITIES IN PROJECT AREA. UTILITY INFORMATION SHOWN ON PLANS REPRESENTS APPROXIMATE LOCATIONS OF EXISTING UTILITIES AND IS NOT NECESSARILY ALL-INCLUSIVE. CONTRACTOR SHALL BE RESPONSIBLE FOR VERIFYING EXACT LOCATIONS OF ALL EXISTING UTILITIES AND SHALL BE REQUIRED TO PROTECT UTILITIES TO AVOID DAMAGE.
PRIOR TO ANY EXCAVATION, CONTRACTOR SHALL CONTACT TEXAS811 AND OTHERS AS REQUIRED TO LOCATE EXISTING UTILITIES.
 CONTRACTOR SHALL ALSO CONTACT APPROPRIATE CITY UTILITY DEPARTMENT FOR FIELD LOCATES OF MUNICIPAL INFRASTRUCTURE 48 HOURS PRIOR TO CONSTRUCTION.

NO.	DATE	REVISION	REVIEWED
6			
5			
4			
3			
2			
1	06/01/20	REVISED PER CONTRACTOR MARKUPS	MRB

DRAWN: BW2
 DESIGN: MRB
 REVIEWED: JFW
 SCALE: 1" = 20'
 DATE: OCTOBER 2019
 DWG. NAME: 1933WTR02BOST



BW2 ENGINEERS, INC.
 1919 S. Shiloh Road
 Suite 500, L.B. 27
 Garland, Texas 75042
 (972) 864-8200 (T) (972) 864-8220 (F)
 Firm Registration No. F-5290

THE SEAL THAT ORIGINALLY APPEARED ON THIS DOCUMENT WAS AUTHORIZED BY MICHAEL R. BURGE, TEXAS P.E. 41290 ON 10/11/19. ALTERATION OF A SEALED DOCUMENT WITHOUT PROPER NOTIFICATION OF THE RESPONSIBLE ENGINEER IS AN OFFENSE UNDER THE TEXAS ENGINEERING PRACTICE ACT.

WATER LINE AND WASTEWATER LINE REPLACEMENT PROJECT
 (ST. MARY STREET, BOST STREET, AND SHERMAN STREET)
 LINE "W-B" - STA. 8+00 TO STA. 9+27.06 AND LINE "W-C"
CITY OF ROCKWALL

SHEET NO. 12
 OF 29 SHEETS
 JOB NO. 19-1933