

This Record Drawing is a compilation of the sealed engineering drawing for this project as modified by addenda, change orders, and information furnished by the Owner and/or Contractor (Pittard Construction Company). The information shown on the record drawing that was provided by the Contractor or others not associated with the Engineer, cannot be verified for accuracy or completeness. The original sealed engineering drawings are on file at the office of:

BW2 Engineers, Inc.
1919 S. Shiloh Road, Suite 500
Garland, Texas 75042
(972) 864-8200
RECORD DRAWINGS PREPARED ON: 06/01/20

WATER LINE "W-A"

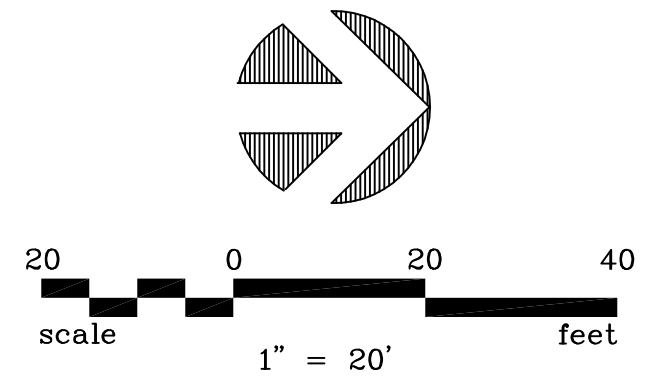
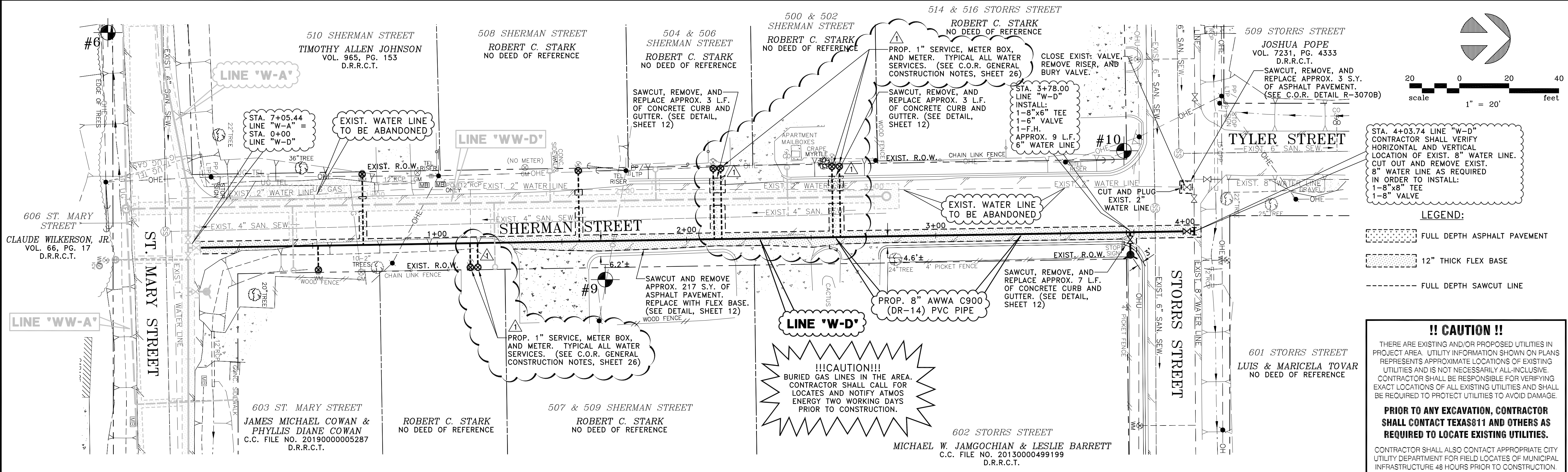
STATION	NORTHING(Y)	EASTING(X)
P.I. STA. 9+19.60	7025896.6839	2595834.7395
P.I. STA. 10+37.00	7025854.1232	2595944.1539
END STA. 10+46.36	7025854.2190	2595953.5210

WATER LINE "W-D"

STATION	NORTHING(Y)	EASTING(X)
BEGIN STA. 0+00	7025896.2740	2595620.5849
END STA. 4+03.74	7026299.9553	2595613.8856

HORIZONTAL AND VERTICAL CONTROL POINTS

CP#	NORTHING(Y)	EASTING(X)	ELEVATION(Z)	DESCRIPTION
6	7025864.0870	2595534.2700	547.24	1/2" I.R. W/CAP
7	7025912.6640	2595735.1300	545.82	1/2" I.R. W/CAP
8	7025806.9740	2596090.9640	532.58	X CUT
9	7026063.6420	2595633.3180	551.07	1/2" I.R. W/CAP
10	7026271.7420	2595581.6630	558.56	1/2" I.R. W/CAP



STA. 4+03.74 LINE "W-D" CONTRACTOR SHALL VERIFY HORIZONTAL AND VERTICAL LOCATION OF EXIST. 8" WATER LINE. CUT OUT AND REMOVE EXIST. 8" WATER LINE AS REQUIRED IN ORDER TO INSTALL: 1-8"x8" TEE 1-8" VALVE

- LEGEND:**
- FULL DEPTH ASPHALT PAVEMENT
 - 12" THICK FLEX BASE
 - FULL DEPTH SAWCUT LINE

!! CAUTION !!

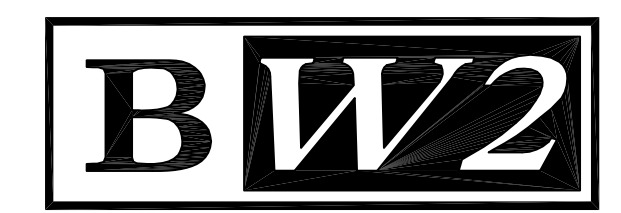
THERE ARE EXISTING AND/OR PROPOSED UTILITIES IN PROJECT AREA. UTILITY INFORMATION SHOWN ON PLANS REPRESENTS APPROXIMATE LOCATIONS OF EXISTING UTILITIES AND IS NOT NECESSARILY ALL-INCLUSIVE. CONTRACTOR SHALL BE RESPONSIBLE FOR VERIFYING EXACT LOCATIONS OF ALL EXISTING UTILITIES AND SHALL BE REQUIRED TO PROTECT UTILITIES TO AVOID DAMAGE.

PRIOR TO ANY EXCAVATION, CONTRACTOR SHALL CONTACT TEXAS811 AND OTHERS AS REQUIRED TO LOCATE EXISTING UTILITIES.

CONTRACTOR SHALL ALSO CONTACT APPROPRIATE CITY UTILITY DEPARTMENT FOR FIELD LOCATES OF MUNICIPAL INFRASTRUCTURE 48 HOURS PRIOR TO CONSTRUCTION.

NO.	DATE	REVISION	REVIEWED
6			
5			
4			
3			
2			
1	06/01/20	REVISED PER CONTRACTOR MARKUPS	MRB

DRAWN: BW2
DESIGN: MRB
REVIEWED: JFW
SCALE: 1" = 20'
DATE: OCTOBER 2019
DWG. NAME: 1933WTR02STMARY



BW2 ENGINEERS, INC.
1919 S. Shiloh Road
Suite 500, L.B. 27
Garland, Texas 75042
(972) 864-8200 (T) (972) 864-8220 (F)
Firm Registration No. F-5290

THE SEAL THAT ORIGINALLY APPEARED ON THIS DOCUMENT WAS AUTHORIZED BY MICHAEL R. BURGE, TEXAS P.E. 41290 ON 10/11/19. ALTERATION OF A SEALED DOCUMENT WITHOUT PROPER NOTIFICATION OF THE RESPONSIBLE ENGINEER IS AN OFFENSE UNDER THE TEXAS ENGINEERING PRACTICE ACT.

WATER LINE AND WASTEWATER LINE REPLACEMENT PROJECT
(ST. MARY STREET, BOST STREET, AND SHERMAN STREET)
LINE "W-A" - STA. 8+00 TO STA. 10+46.36 AND LINE "W-D"
CITY OF ROCKWALL

SHEET NO. 10
OF 29 SHEETS
JOB NO. 19-1933